

**STATE OF ILLINOIS**  
**DEPARTMENT OF TRANSPORTATION**  
**DIVISION OF HIGHWAYS**

|                       |          |                   |              |           |
|-----------------------|----------|-------------------|--------------|-----------|
| ROUTE NO.             | SECTION  | COUNTY            | TOTAL SHEETS | SHEET NO. |
| F.A.U. 5345           | *        | DEKALB            | 26           | 1         |
| FED. ROAD DIST. NO. 7 | ILLINOIS | FED. AID PROJECT- |              |           |

\* Section 10-00177-00-BT Contract #87480

**PLANS FOR PROPOSED  
ROADWAY IMPROVEMENTS**  
**FAIRVIEW BIKE PATH**  
**CITY OF DEKALB**

**F.A.U. ROUTE 5345 (FAIRVIEW DR.)**  
**SECTION 10-00177-00-BT**  
**CITY OF DEKALB, DEKALB COUNTY**  
**PROJECT TCSP-IL10(103)**  
**JOB NO. C-93-117-11**

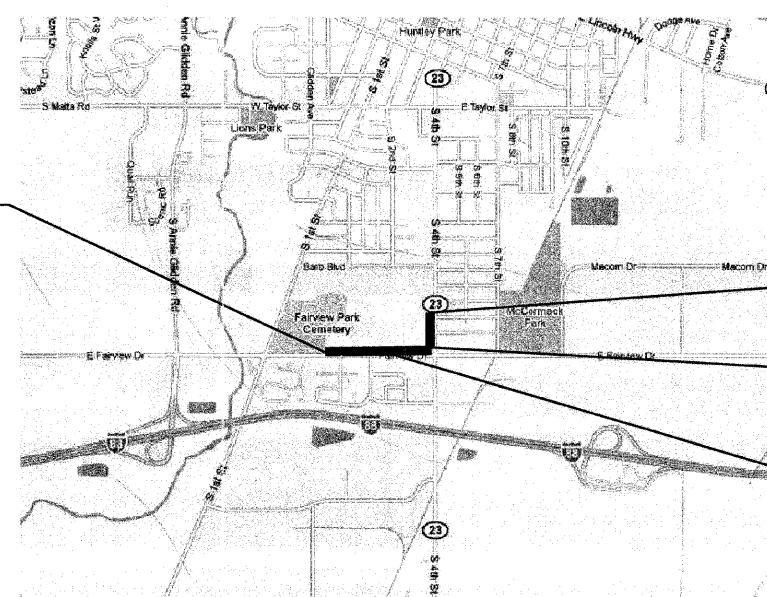
**INDEX OF SHEETS**

1. COVER SHEET
2. SUMMARY & SCHEDULE OF QUANTITIES
3. TYPICAL SECTIONS & GENERAL NOTES
4. OVERALL PLAN
5. EASEMENT PLAN
6. PLAN & PROFILE - FAIRVIEW DRIVE PATH
7. PLAN & PROFILE - FAIRVIEW DRIVE PATH
8. PLAN & PROFILE - FAIRVIEW DRIVE PATH
9. PLAN & PROFILE - FAIRVIEW DRIVE PATH
10. PLAN & PROFILE - FAIRVIEW DRIVE PATH
11. PLAN & PROFILE - FAIRVIEW DRIVE PATH
12. PLAN & PROFILE - IL. RT. 23 SIDEWALK
13. PLAN & PROFILE - PATRIOT DRIVE SIDEWALK
14. INTERSECTION DETAILS
15. SIGNAGE & PAVEMENT STRIPING PLAN
16. EROSION CONTROL PLAN
17. CROSS SECTIONS - FAIRVIEW DRIVE PATH
18. CROSS SECTIONS - FAIRVIEW DRIVE PATH
19. CROSS SECTIONS - FAIRVIEW DRIVE PATH
20. CROSS SECTIONS - FAIRVIEW DRIVE PATH
21. CROSS SECTIONS - FAIRVIEW DRIVE PATH
22. CROSS SECTIONS - IL. RT. 23 SIDEWALK
23. CROSS SECTIONS - PATRIOT DRIVE SIDEWALK
24. TRAFFIC SIGNAL MODIFICATION PLAN
25. TRAFFIC SIGNAL CABLE PLAN & SEQUENCE
26. TRAFFIC SIGNAL GENERAL NOTES & DETAILS

**INDEX OF STANDARDS**

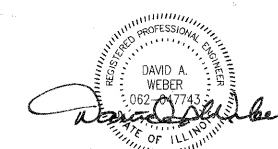
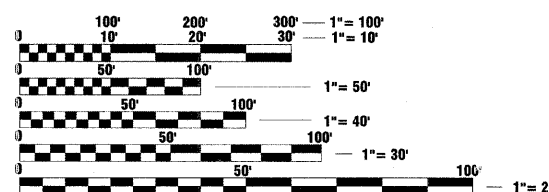
- |           |  |
|-----------|--|
| 280001-06 | TEMPORARY EROSION CONTROL SYSTEMS  |
| 424001-06 | PERPENDICULAR CURB RAMPS FOR SIDEWALKS                                   |
| 424006    | DIAGONAL CURB RAMPS FOR SIDEWALKS  |
| 602011-02 | CATCH BASIN TY. C  |
| 602306-03 | INLET TYPE B   |
| 604001-03 | TYPE 1 FRAME & LIDS  |
| 604036-02 | TYPE 8 GRATE   |
| 606001-04 | CONCRETE CURB TYPE B AND COMBINATION CONCRETE CURB & GUTTER              |
| 664001-02 | CHAIN LINK FENCE   |
| 701001-02 | OFF-RD OPERATIONS, 2L, 2W, MORE THAN 15' AWAY                            |
| 701006-03 | OFF-RD OPERATIONS, 2L, 2W, 15' TO 24" FROM PAVEMENT EDGE                 |
| 701011-02 | OFF-RD MOVING OPERATIONS, 2L, 2W, DAY ONLY                               |
| 701301-04 | LANE CLOSURE, 2L, 2W, SHORT TIME OPERATIONS                              |
| 701427    | LANE CLOSURE, MULTILANE, INTERMITTENT OR MOVING OPER., FOR SPEEDS <40MPH |
| 701501-06 | URBAN LANE CLOSURE, 2L, 2W, UNDIVIDED                                    |
| 701801-05 | LANE CLOSURE MULTILANE 1W OR 2W CROSSWALK OR SIDEWALK CLOSURE            |
| 701901-02 | TRAFFIC CONTROL DEVICES  |
| 720006-03 | SIGN PANEL ERECTION DETAILS  |
| 720001-01 | SIGN PANEL MOUNT DETAILS   |
| 720021-02 | SIGN PANELS EXTRUDED ALUMINUM TYPE                                       |
| 728001-01 | TELESCOPING STEEL SIGN SUPPORT   |
| 780001-03 | TYPICAL PAVEMENT MARKING   |
| 873001-02 | TRAFFIC SIGNAL GROUNDING   |
| 878001-09 | CONCRETE FOUNDATION DETAILS  |

IMPROVEMENTS BEGIN  
STA. - 5+34



IMPROVEMENTS END  
STA. - 54+96  
STATION EQUATION  
FAIRVIEW DR.: STA. - 32+74  
IL. RT. 23: STA. - 50+00  
PROJECT LOCATION

**LOCATION MAP - DEKALB, ILLINOIS**  
TOTAL LENGTH OF SECTION = 3236 FT (0.61 MI)



Dec 29, 2011 DATE

DAVID A. WEBER  
STERLING, ILLINOIS  
ILLINOIS LICENSED PROFESSIONAL  
ENGINEER NO. 062-047743  
EXPIRES 11-30-2013

**CITY OF DEKALB**

APPROVED December 27, 2011

*Joel C. Maurer*  
CITY OF DEKALB

**STATE OF ILLINOIS**  
**DEPARTMENT OF TRANSPORTATION**  
**DIVISION OF HIGHWAYS**

PASSED 12-30-2011

*Justin*  
DISTRICT 3 IMPLEMENTATION ENGINEER

RELEASED FOR BID BASED ON LIMITED REVIEW 12-30-2011

*Garth*  
DEPUTY DIRECTOR OF HIGHWAYS, REGION 2 ENGINEER

**PRINTED BY THE AUTHORITY  
OF THE STATE OF ILLINOIS**

REVISED 12/23/2011

J.U.L.I.E.  
JOINT UTILITY LOCATION INFORMATION FOR EXCAVATION  
1-800-892-0123

THE LOCATIONS OF UTILITY FACILITIES AS SHOWN ON THESE PLANS ARE AN ESTIMATE AND NOT INTENDED AS FIELD LOCATIONS FOR CONSTRUCTION. THE CONTRACTOR IS RESPONSIBLE FOR CONTACTING ALL UTILITIES PRIOR TO CONSTRUCTION AND CALLING J.U.L.I.E. AT 800-892-0123 FOR CONFIRMATION OF EXISTING UTILITY LOCATIONS.

**CONTRACT NO. 87480**

|  |                            |
|--|----------------------------|
| <br>wendler engineering services, inc.<br>engineers - surveyors - scientists<br>www.wendlers.com | Date:<br><u>10/28/2011</u> |
|  | WES Job:<br><u>2100302</u> |