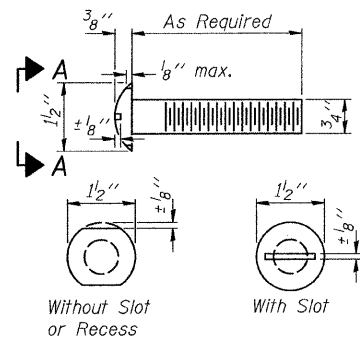
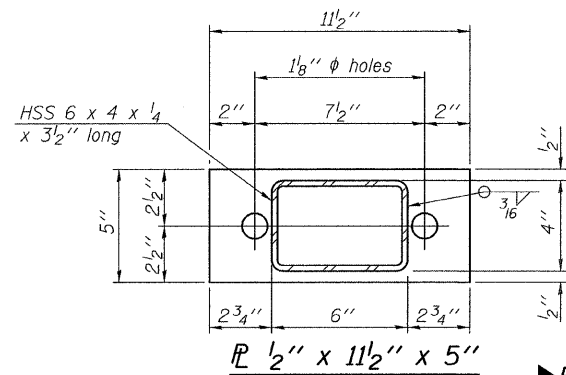


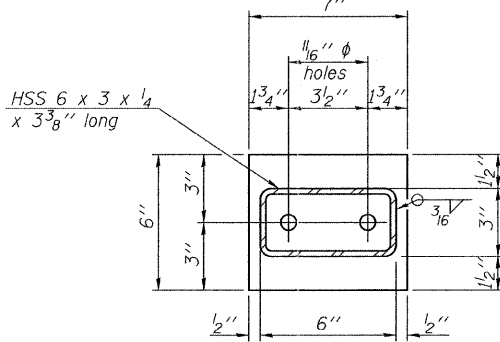
FOR RAIL POST SPACING SEE SH.#5 OF 10



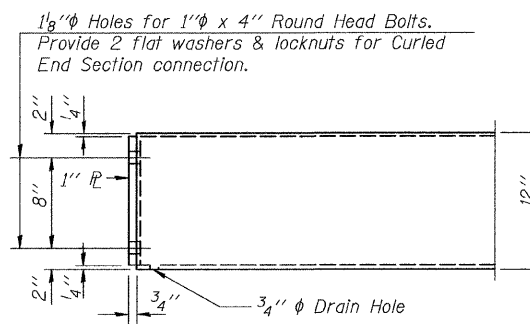
VIEW A-A
ROUND HEAD BOLT



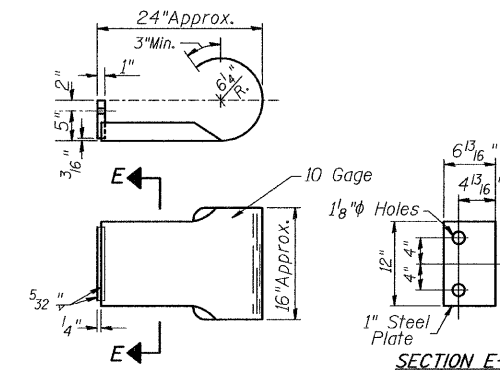
SECTION B-B
R 1/2" x 11 1/2" x 5"



SECTION AT RAILING POST
R 1/2" x 7" x 6"



END OF RAIL DETAILS



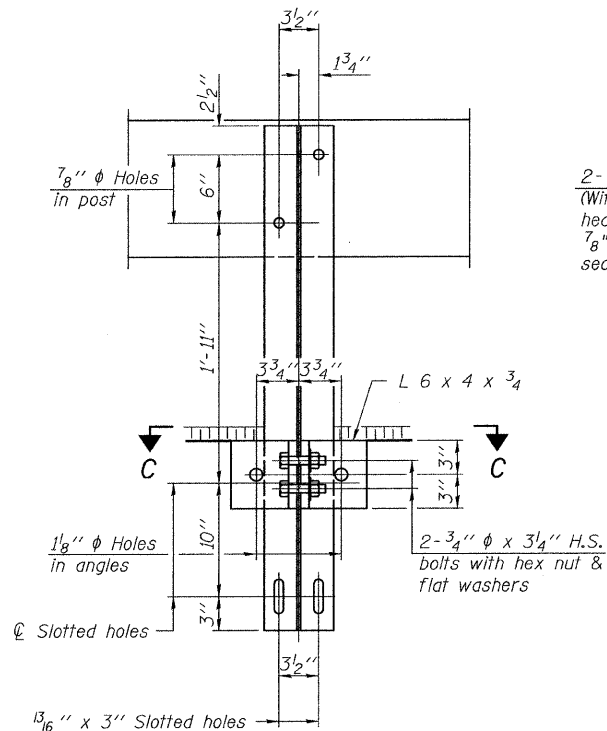
SECTION E-E
CURLLED END SECTION

(4 Req'd) Cast Included with Steel Railing, Type S-1. Terminal Markers - Direct Applied shall be placed on end of each Curled End Section. (Each Corner)

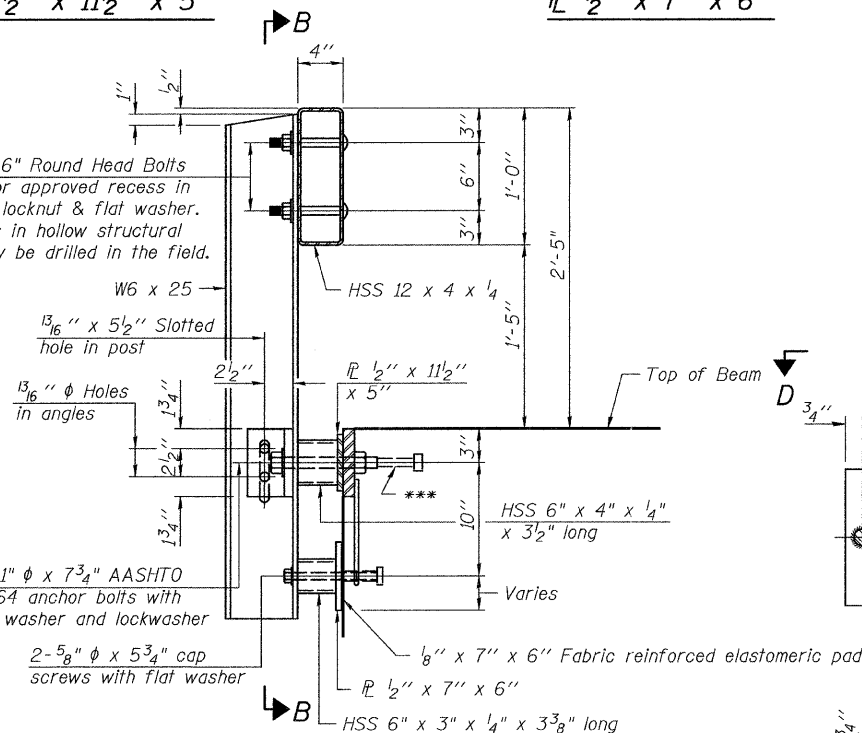
NOTES

All field drilled holes shall be coated with an approved zinc rich paint before erection. For multi-span bridges, sufficient 1/4" x 6" x 1'-2" galvanized steel shims shall be provided to align rail between adjacent spans. Cost included with Steel Railing, Type S-1. All steel rail elements shall be galvanized according to Article 509.05 of the Standard Specifications.

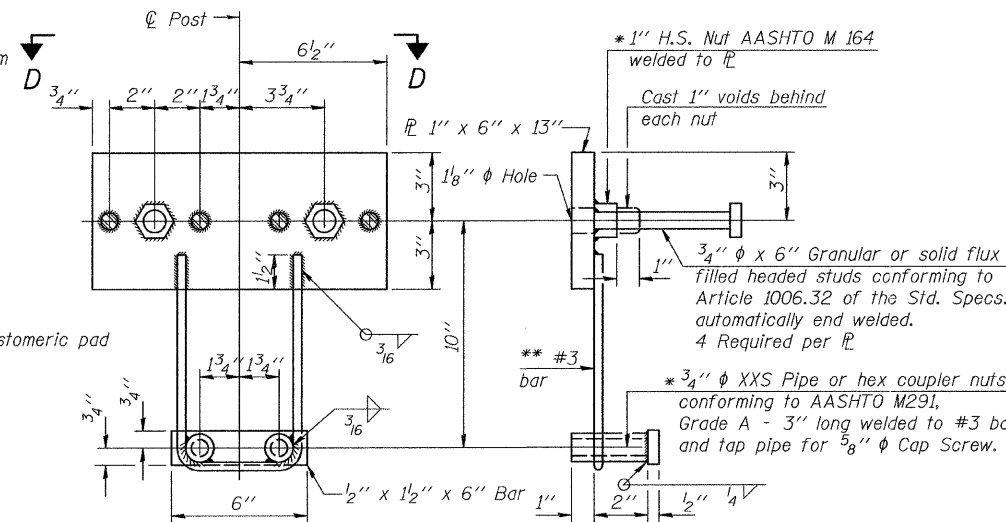
*** The studs of the anchor devices shall be placed below the top reinforcement bars and the outermost longitudinal reinforcement bar shall be placed directly above the studs of the rail post anchor device.



SECTION C-C

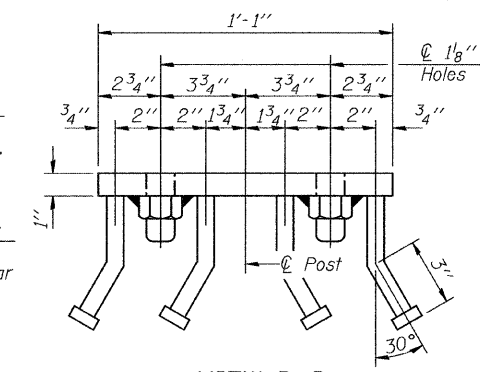


SECTION AT RAILING POST

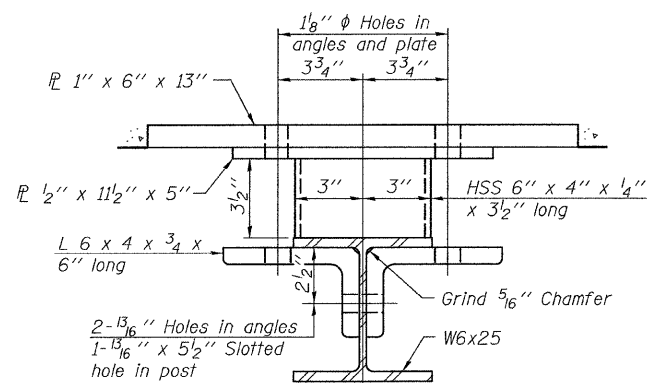


ANCHOR DEVICE

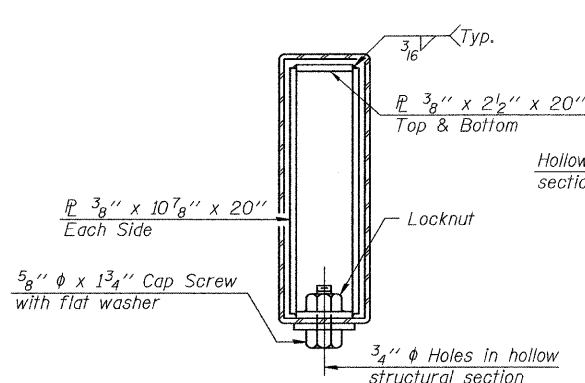
* Threaded areas shall be plugged or blocked off during casting of beam.



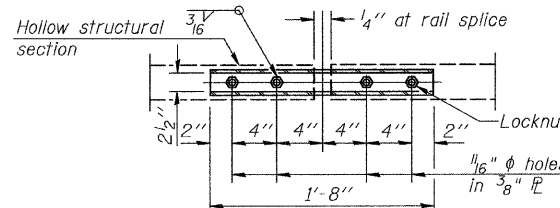
VIEW D-D



SECTION C-C



SECTIONS AT RAIL SPLICE



PLAN-BOTT. SPLICE R
TYPICAL

** Whenever the lower insert assemblies interfere with strand locations, the #3 bars shall be cut and adjusted in order to allow raising or lowering of the lower inserts. Maximum adjustment not to exceed 1/2 inch.

BILL OF MATERIAL

Item	Unit	Quantity
① Steel Railing, Type S-1	FOOT	96

① See Special Provisions

STEEL RAILING TYPE S-1
IROQUOIS COUNTY
SECTION 08-2119-00-BR
T.R. 212 OVER DRAINAGE DITCH

SHEET NO. 4	ROUTE NO.	SECTION	COUNTY	TOTAL SHEETS	SHEET NO.
10 SHEETS	TR 212	08-2119-00-BR	IROQUOIS	24	10
		S.N. 038-5040		CONTRACT NO. 87501	
	FED. ROAD DIST. NO. 7	ILLINOIS	FED. AID PROJECT BROS-0075(147)		