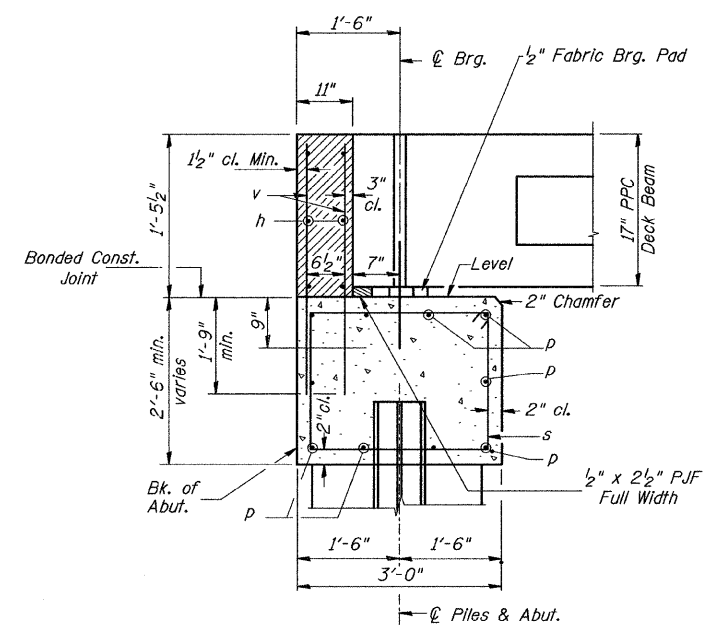
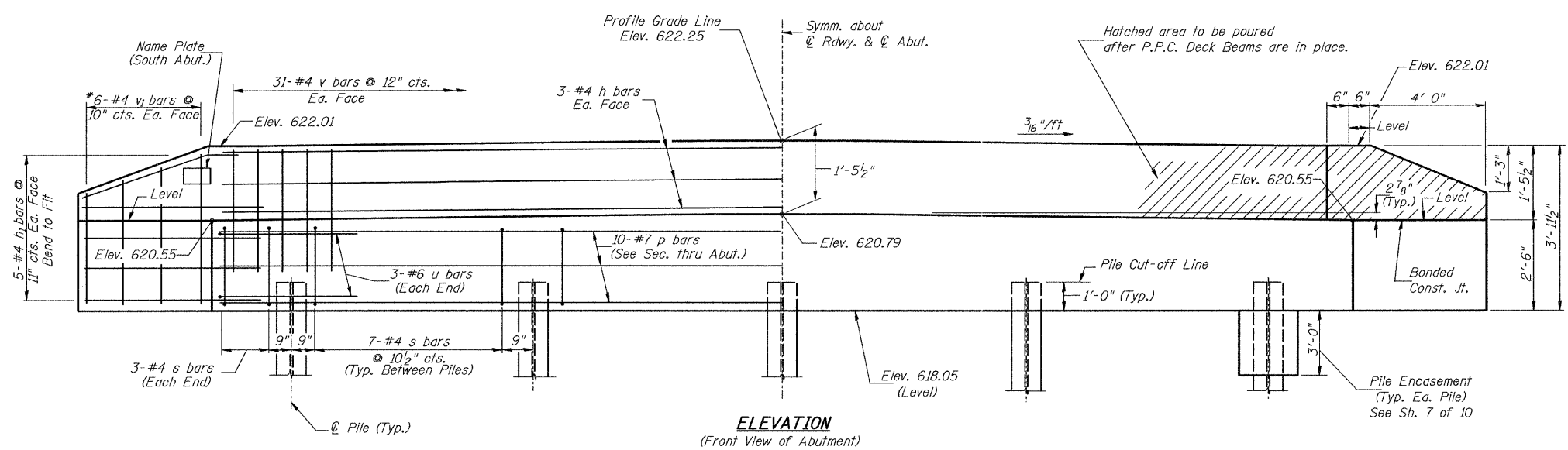


PLAN



SECTION THRU ABUT.



ELEVATION
(Front View of Abutment)

**TWO ABUTMENTS
BILL OF MATERIAL**

BAR	NO.	SIZE	LENGTH	SHAPE
h	12	#4	30'-9"	—
h ₁	40	#4	6'-6"	—
p	20	#7	30'-9"	—
s	68	#4	10'-5"	□
u	12	#6	11'-7"	□
v	124	#4	3'-2"	—
v ₁	24	#4	6'-1"	—
Concrete Structures		CU YD	23.4	
Reinforcement Bars		POUND	2,720	
Structure Excavation		CU YD	65	
Name Plates		EACH	1	
Furnishing Steel Piles HP10x42		FOOT	216	
Driving Piles		FOOT	216	
Test Pile Steel HP10x42		EACH	1	
Concrete Encasement		CU YD	3.5	

① See Special Provisions

DESIGN STRESSES

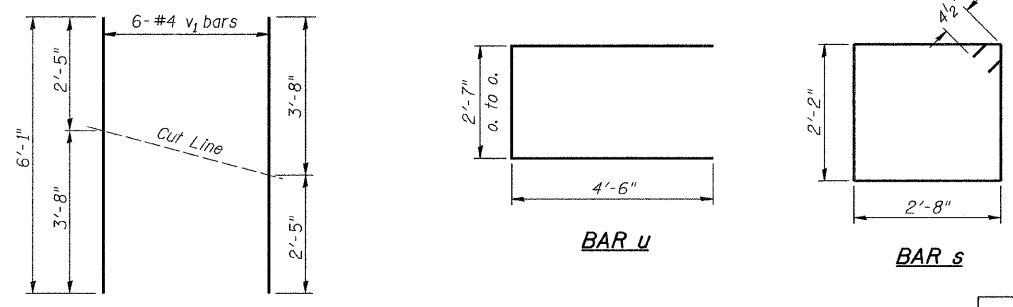
$f'_c = 3,500$ p.s.i.
 $f_y = 60,000$ p.s.i.

PILE DATA

Type & Size: Steel HP10x42
Nominal Required Bearing: 195 kips
Factored Resistance Available: 105 kips
Est. Length: 24' Each Abutment
No. Req'd.: 10 (Includes 1 Test Pile at South Abut.)

NOTES

- The Backwall and the portion of the Wingwalls above the bonded construction joint shall be cast against the in-place beam.
- Reinforcement bars shall conform to ASTM A706 Grade 60.



BAR CUTTING DIAGRAM

*Order v₁ bars full length. Cut as shown and use remainder of bars in opposite face.

**ABUTMENTS
IROQUOIS COUNTY
SECTION 08-21119-00-BR
T.R. 212 OVER DRAINAGE DITCH**

SHEET NO. 6 10 SHEETS	ROUTE NO. TR 212	SECTION 08-21119-00-BR	COUNTY IROQUOIS	TOTAL SHEETS 24	SHEET NO. 12
	S.N. 038-5040		CONTRACT NO. 87501		
FED. ROAD DIST. NO. 7 ILLINOIS			FED. AID PROJECT BRS-0075(147)		