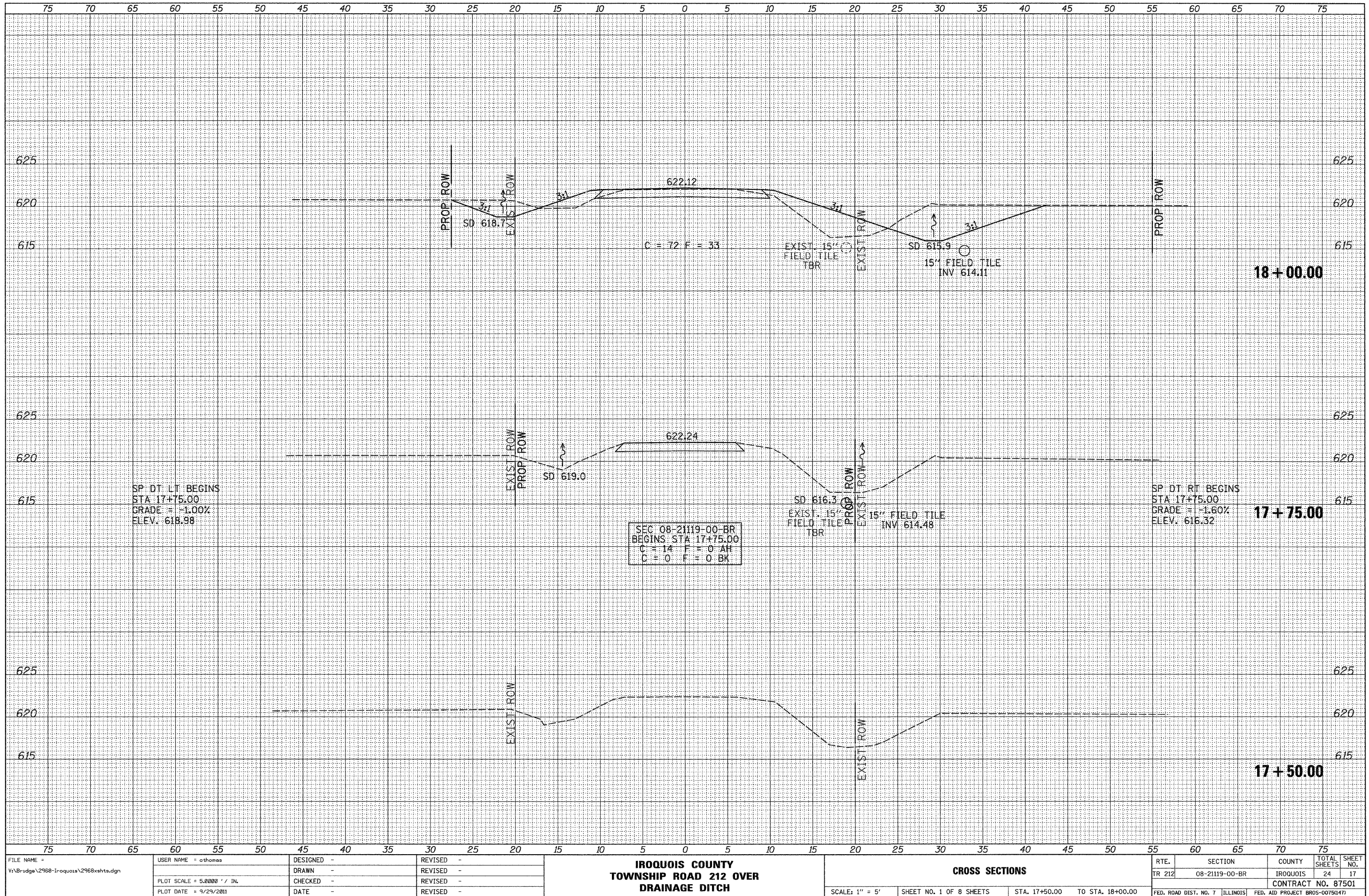


DATE	BY
FINAL SURVEY NOTE BOOK NO.	SURVEYED PLOTTED TEMPLATE AREAS CHECKED

DATE	BY
ORIGINAL SURVEY NOTE BOOK NO.	SURVEYED PLOTTED TEMPLATE AREAS CHECKED



SP. DT. LT. BEGINS
STA 17+75.00
GRADE = -1.00%
ELEV. 618.98

SEC 08-21119-00-BR
BEGINS STA 17+75.00
C = 14 F = 0 AH
C = 0 F = 0 BK

SP. DT. RT. BEGINS
STA 17+75.00
GRADE = -1.60%
ELEV. 616.32

FILE NAME =
V:\B:\sdge\2968-Iroquois\2968\shsta.dgn

USER NAME = cthomas
DESIGNED -
DRAWN -
CHECKED -
DATE -

REVISIED -
REVISIED -
REVISIED -
REVISIED -

**IROQUOIS COUNTY
TOWNSHIP ROAD 212 OVER
DRAINAGE DITCH**

CROSS SECTIONS
SCALE: 1" = 5'
SHEET NO. 1 OF 8 SHEETS
STA. 17+50.00 TO STA. 18+00.00

RTE.	SECTION	COUNTY	TOTAL SHEETS	SHEET NO.
TR 212	08-21119-00-BR	IROQUOIS	24	17
CONTRACT NO. 87501				
FED. ROAD DIST. NO. 7 ILLINOIS FED. AID PROJECT BR05-007501(7)				