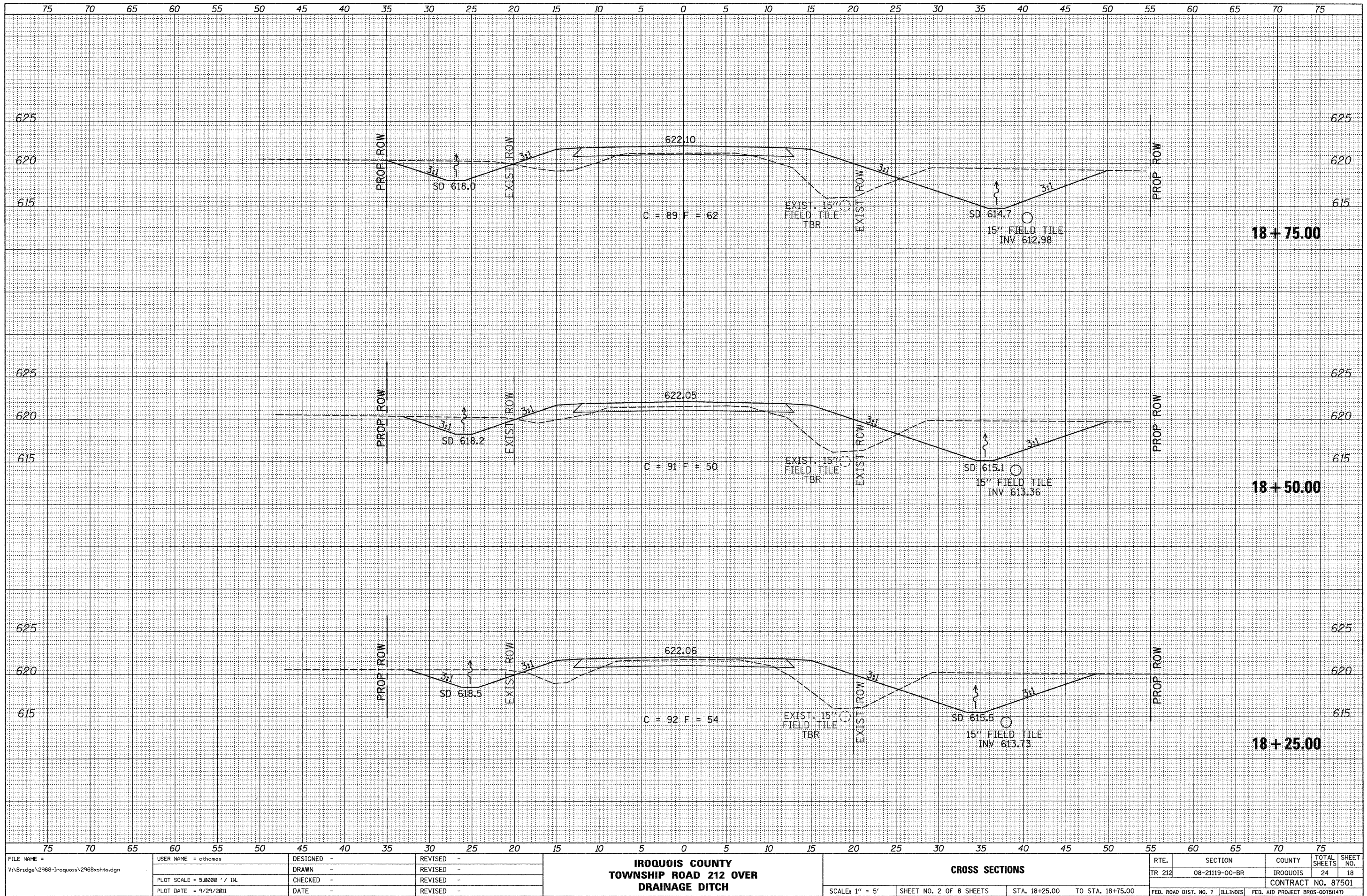


DATE	
BY	
FINAL SURVEY	SURVEYED
NOTE BOOK	PLOTTED
NO.	TEMPLATE
	AREAS CHECKED

DATE	
BY	
ORIGINAL SURVEY	SURVEYED
NOTE BOOK	PLOTTED
NO.	TEMPLATE
	AREAS CHECKED



FILE NAME = V:\Bridges\2968-Iroquois\2968xshs.dgn
 USER NAME = cthomas
 PLOT SCALE = 5.0000' / IN.
 PLOT DATE = 9/29/2011

DESIGNED -	REVISED -
DRAWN -	REVISED -
CHECKED -	REVISED -
DATE -	REVISED -

**IROQUOIS COUNTY
 TOWNSHIP ROAD 212 OVER
 DRAINAGE DITCH**

CROSS SECTIONS
 SCALE: 1" = 5'
 SHEET NO. 2 OF 8 SHEETS
 STA. 18+25.00 TO STA. 18+75.00

RTE.	SECTION	COUNTY	TOTAL SHEETS	SHEET NO.
TR 212	08-21119-00-BR	IROQUOIS	24	18
CONTRACT NO. 87501				
FED. ROAD DIST. NO. 7 ILLINOIS FED. AID PROJECT BR05-00750147				