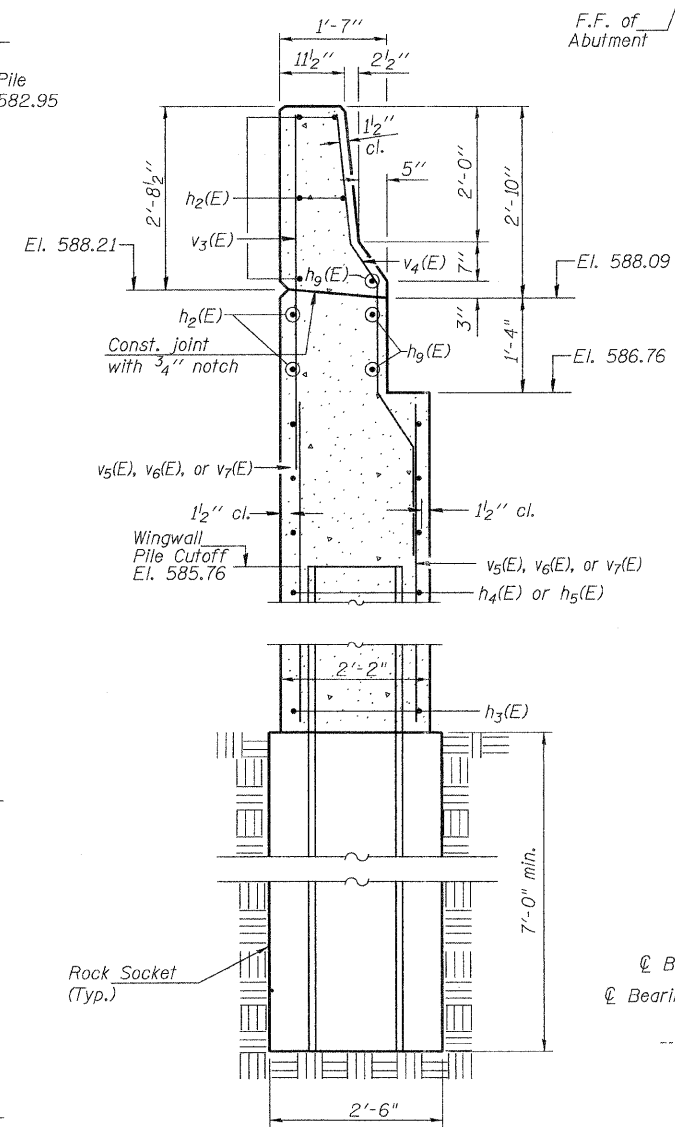
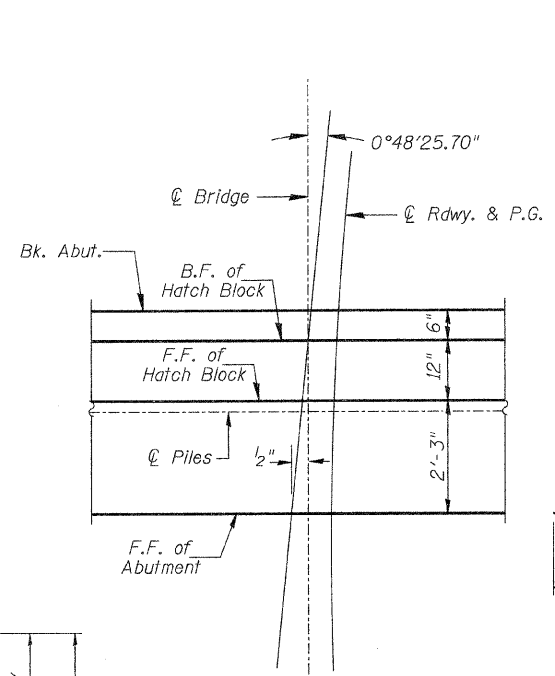


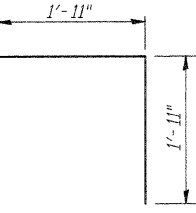
DETAIL A
(Showing h₆(E) bar locations)



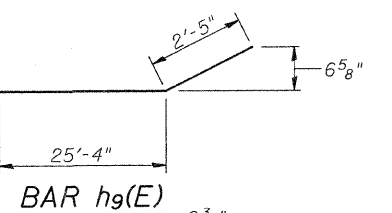
SECTION B-B



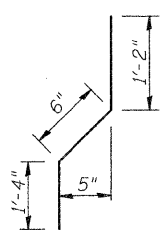
DETAIL B



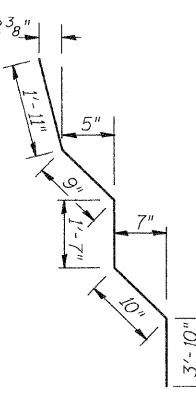
BAR v(E)



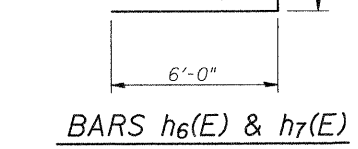
BAR h₉(E)



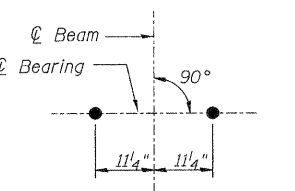
BAR v₁(E)



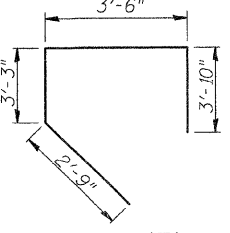
BAR v₄(E)



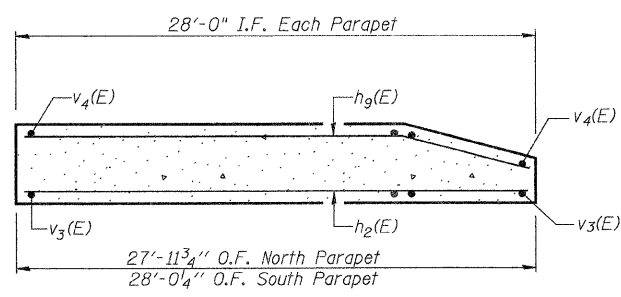
BARS h₆(E) & h₇(E)



ANCHOR BOLT DETAIL



BAR s₃(E)



SECTION D-D
BILL OF MATERIAL

BAR	NO.	SIZE	LENGTH	SHAPE
h(E)	43	#6	33'-3"	—
h ₁ (E)	8	#5	33'-3"	—
h ₂ (E)	26	#5	27'-9"	—
h ₃ (E)	44	#6	12'-3"	—
h ₄ (E)	20	#6	20'-11"	—
h ₅ (E)	24	#6	30'-0"	—
h ₆ (E)	24	#5	12'-0"	L
h ₇ (E)	80	#6	12'-0"	L
h ₉ (E)	6	#5	27'-9"	—
h ₁₀ (E)	5	#6	30'-1"	—
s ₃ (E)	31	#6	13'-4"	—
v(E)	31	#5	3'-10"	L
v ₁ (E)	34	#4	3'-0"	—
v ₂ (E)	74	#6	18'-8"	—
v ₃ (E)	64	#6	6'-11"	—
v ₄ (E)	64	#6	8'-11"	—
v ₅ (E)	48	#6	21'-7"	—
v ₆ (E)	40	#6	11'-7"	—
v ₇ (E)	40	#6	7'-3"	—
v ₈ (E)	34	#5	7'-2"	—
v ₉ (E)	34	#5	6'-0"	—
Concrete Structures		CU YD	132.0	
Reinforcement Bars, Epoxy Coated		POUND	15,400	
Furnishing Steel Piles HP14x89		FOOT	536	
① Setting Piles in Rock		EACH	20	
Cofferdam Excavation		CU YD	465	
Concrete Encasement		CU YD	17.7	
Concrete Sealer		SQ FT	165	

Notes:
 Hatched area to be poured after superstructure false work has been removed. Quantity of concrete included with Concrete Superstructure. Space reinforcement in cap to miss anchor bolts. Pour steps monolithically with cap. Quantity of concrete in end post included with Concrete Superstructure on sheet 8 of 23. See Sheet 22 of 23 for Bar Splicer Details. See Sheet 23 of 23 for Pile, Concrete Encasement, and Rock Socket Details.

WEST ABUTMENT DETAILS
RIVER RD. (F.A.U. 3799) OVER
BLACKBERRY CREEK
SECTION 08-00036-00-BR
KENDALL COUNTY
STATION 99+98.81

DESIGNED	CTM
CHECKED	BAN
DRAWN	CTM
CHECKED	BAN

SHEET NO. 19 23 SHEETS	ROUTE NO.	SECTION	COUNTY	TOTAL SHEETS	SHEET NO.
	FAU 3799	08-00036-00-BR	KENDALL	54	40
SN 047-6500			CONTRACT NO. 87509		
FED. ROAD DIST. NO. 7 ILLINOIS			FED. AID PROJECT BRM-9003(883)		