

STATE OF ILLINOIS
DEPARTMENT OF TRANSPORTATION
DIVISION OF HIGHWAYS

**PLANS FOR PROPOSED
HIGHWAY BRIDGE PROGRAM**

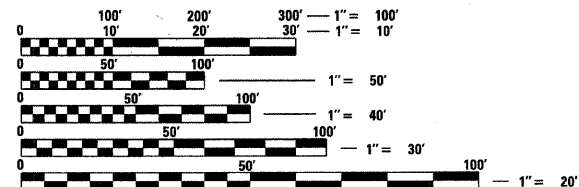
TR ROUTE 216
CHRISTIAN COUNTY
SECTION 08-16112-00-BR
PROJECT BROS-0021 (163)
STONINGTON TOWNSHIP
C-96-263-10

INDEX OF SHEETS

1. COVER SHEET
2. GENERAL NOTES AND SUMMARY OF QUANTITIES
3. TYPICAL SECTIONS AND DETAILS
4. PLAN AND PROFILE
- 5.-13. BRIDGE PLANS
- 14.-26. CROSS SECTIONS

STANDARDS (IN PROPOSAL)

- | | |
|-----------|---|
| 000001-06 | STANDARD SYMBOLS, ABBREVIATIONS, AND PATTERNS |
| 280001-06 | TEMPORARY EROSION CONTROL SYSTEMS |
| 542301-03 | PRECAST REINFORCED CONCRETE FLARED END SECTION |
| 515001-03 | NAME PLATE FOR BRIDGES |
| 630301-05 | SHOULDER WIDENING FOR TYPE 1 (SPECIAL) GUARDRAIL TERMINALS |
| 635006-03 | REFLECTOR AND TERMINAL MARKER PLACEMENT |
| 701901-02 | TRAFFIC CONTROL DEVICES |
| BLR21-9 | TYPICAL APPLICATION OF TRAFFIC CONTROL DEVICES FOR CONSTRUCTION ON RURAL LOCAL HIGHWAYS |
| BLR27-1 | TRAFFIC BARRIER TERMINAL TYPE 5A |



FULL SIZE PLANS HAVE BEEN PREPARED USING STANDARD ENGINEERING SCALES. REDUCED SIZED PLANS WILL NOT CONFORM TO STANDARD SCALES. IN MAKING MEASUREMENTS ON REDUCED PLANS, THE ABOVE SCALES MAY BE USED.

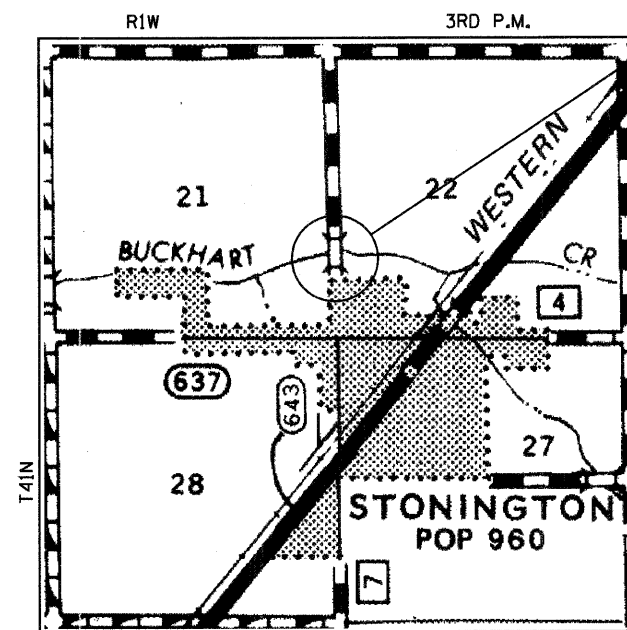
J.U.L.I.E.
JOINT UTILITY LOCATION INFORMATION FOR EXCAVATION
1-800-892-0123

PROJECT ENGINEER: TYLER ZIEGLER, E.I.
PROJECT MANAGER: SCOTT D. SANFORD, P.E., S.E.

WHKS & CO.
ENGINEERING
7018 KINGSMILL CT.,
SPRINGFIELD, IL
(217) 483-9457
DESIGN FIRM #184001036



Scott D. Sanford
Expires 11/30/2011



LOCATION MAP SCALE

LOCATION MAP
TOTAL LENGTH = 535.00 FEET (0.101 MI)
NET LENGTH = 535.00 FEET (0.101 MI)

FUNCTIONAL CLASSIFICATION - LOCAL ROAD
ADT = 150
DESIGN SPEED = 30 MPH

SECTION 08-16112-00-BR
BEGINS STA. 7+65.00
ENDS STA. 13+00.00
PROP. SN 011-3418
REPLACES SN 011-3172

UTILITY COMPANIES:

SHELBY ELECTRIC CO-OP
RTE. 128 & N. 6TH ST.
P.O. BOX 560
SHELBYVILLE, IL 62565
PHONE: 217-774-3986
CONTACT: JIM MATLOCK

CONSOLIDATED COMMUNICATIONS
121 S. 17TH STREET
MATTOON, IL 61938
PHONE: 217-235-3311
CONTACT: DOUG HOUCHIN

SUDENLINK CABLE CO.
127 S. MAIN ST.
MOWEAQUA, IL 62550
PHONE: 217-768-3989
CONTACT: DARREN GILLUM

VILLAGE OF STONINGTON
P.O. BOX 290
STONINGTON, IL 62567
PHONE: 217-325-3621
CONTACT: JEFF TUMIATI



LOCATION OF SECTION INDICATED THUS: [Symbol]

APPROVED Dec. 06, 2011

Clay D. Fry
COUNTY ENGINEER

APPROVED Dec. 6, 2011

Bernard R. Berck
ROAD COMMISSIONER

PASSED December 9, 2011

Tarence H. Fectain, Jr.
DISTRICT SIX ENGINEER OF
LOCAL ROADS AND STREETS

Ron Cochran
DISTRICT SIX ENGINEER OF
CONSTRUCTION

Released For Bid Based on Limited Review December 9, 2011

Roger J. Smith, Jr.
DEPUTY DIRECTOR OF HIGHWAYS
REGION FOUR ENGINEER

STATE OF ILLINOIS
DEPARTMENT OF TRANSPORTATION

**PRINTED BY THE AUTHORITY
OF THE STATE OF ILLINOIS**

CONTRACT NO. 93559

THE WORK CONSISTS OF REMOVING THE EXISTING BRIDGE AND CONSTRUCTING A NEW STRUCTURE (SN 011-3418) AT STA. 10+00 (TR 216) WITH A SINGLE SPAN PRECAST PRESTRESSED REINFORCED DECK BEAM BRIDGE ON CONCRETE PILE BENT ABUTMENTS, 24'-0" CLEAR ROADWAY WIDTH AND 42'-4" BACK TO BACK OF ABUTMENTS, 0° SKEW, VARIABLE WIDTH TRANSITION APPROACHES AND OTHER COLLATERAL WORK.