

**FRANCES ROMACK
THEODORE ROMACK**

N 1/2, SE 1/4, SEC. 21, T14N, R1W, 3RD P.M.

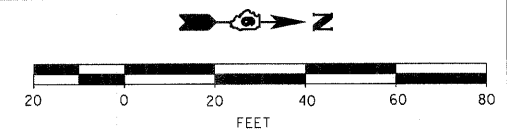
STA. 8+10, 20' LT.
PIPE CULVERTS, CLASS D,
TYPE 1 15" = 30 FOOT
USFL = 603.45
DSFL = 603.29

CL STRUCTURE
STA. 10+00.00
S.N. 011-3418

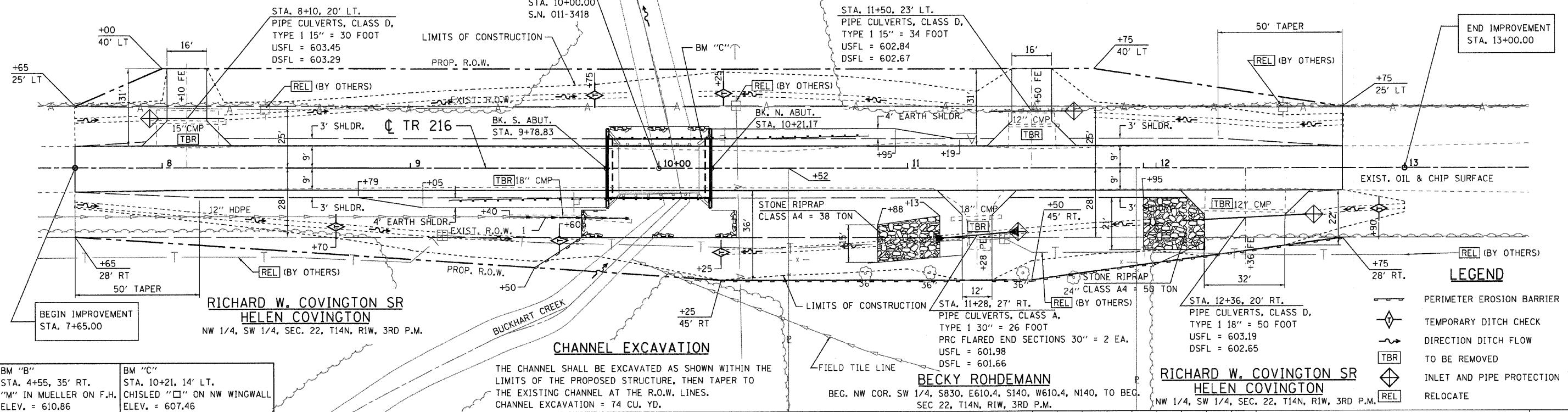
1 STA. 9+64, 20' RT.
STORM SEWERS CLASS-B,
TYPE 1 12" = 48 FOOT
DSFL = 601.47
CONNECT TO EXISTING 12" HDPE STORM SEWER.
COST INCLUDED IN STORM SEWERS, CLASS B, TYPE 1 12"

STA. 11+50, 23' LT.
PIPE CULVERTS, CLASS D,
TYPE 1 15" = 34 FOOT
USFL = 602.84
DSFL = 602.67

NOTES:
1. CONTRACTOR SHALL CONSULT WITH THE ENGINEER
TO DETERMINE THE EXACT LENGTHS OF THE PIPE
CULVERTS PRIOR TO ORDERING.



PLAN	DATE
BY	
DATE	
BY	
DATE	
BY	
DATE	
BY	
DATE	
BY	
DATE	

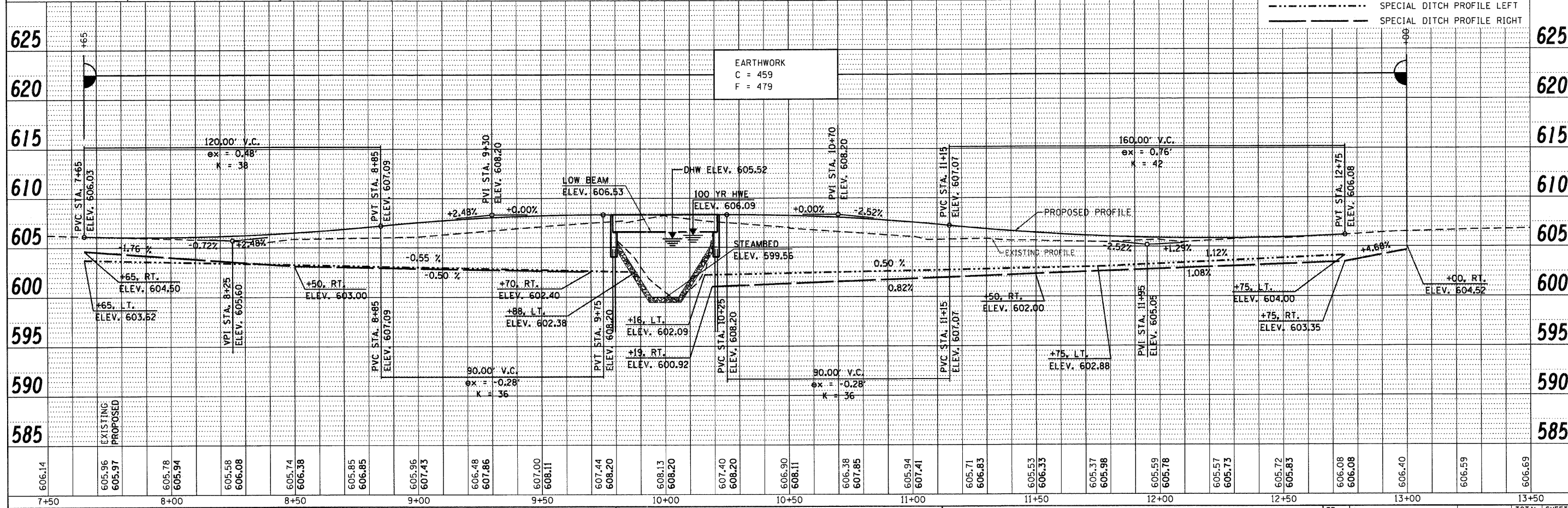


BM "B"
STA. 4+55, 35' RT.
"M" IN MUELLER ON F.H.
ELEV. = 610.86

BM "C"
STA. 10+21, 14' LT.
CHISLED "C" ON NW WINGWALL
ELEV. = 607.46

BECKY ROHDEMANN
BEG. NW COR. SW 1/4, S830, E610.4, S140, W610.4, N140, TO BEG. SEC 22, T14N, R1W, 3RD P.M.

**RICHARD W. COVINGTON SR
HELEN COVINGTON**
NW 1/4, SW 1/4, SEC. 22, T14N, R1W, 3RD P.M.



PROFILE	DATE
BY	
DATE	
BY	
DATE	
BY	
DATE	
BY	
DATE	
BY	
DATE	

USER NAME = dheberling	DESIGNED - TJZ	REVISED -	<p>7018 KINGSMILL CT. SPRINGFIELD, IL (217) 483-9457 DESIGN FIRM #184001036</p>	<p>STATE OF ILLINOIS DEPARTMENT OF TRANSPORTATION</p>	<p>PLAN AND PROFILE</p>	TR	SECTION	COUNTY	TOTAL SHEETS	SHEET NO.
PLOT SCALE = 20x8.0000" / IN.	DRAWN - DLH	REVISED -				216	08-16112-00-BR	CHRISTIAN	26	4
PLOT DATE = 11/14/2011	CHECKED - SDS	REVISED -				CONTRACT NO. 9 5 5 9				
DATE = 2/22/11	DATE = 2/22/11	REVISED -				ILLINOIS FED. AID PROJECT				