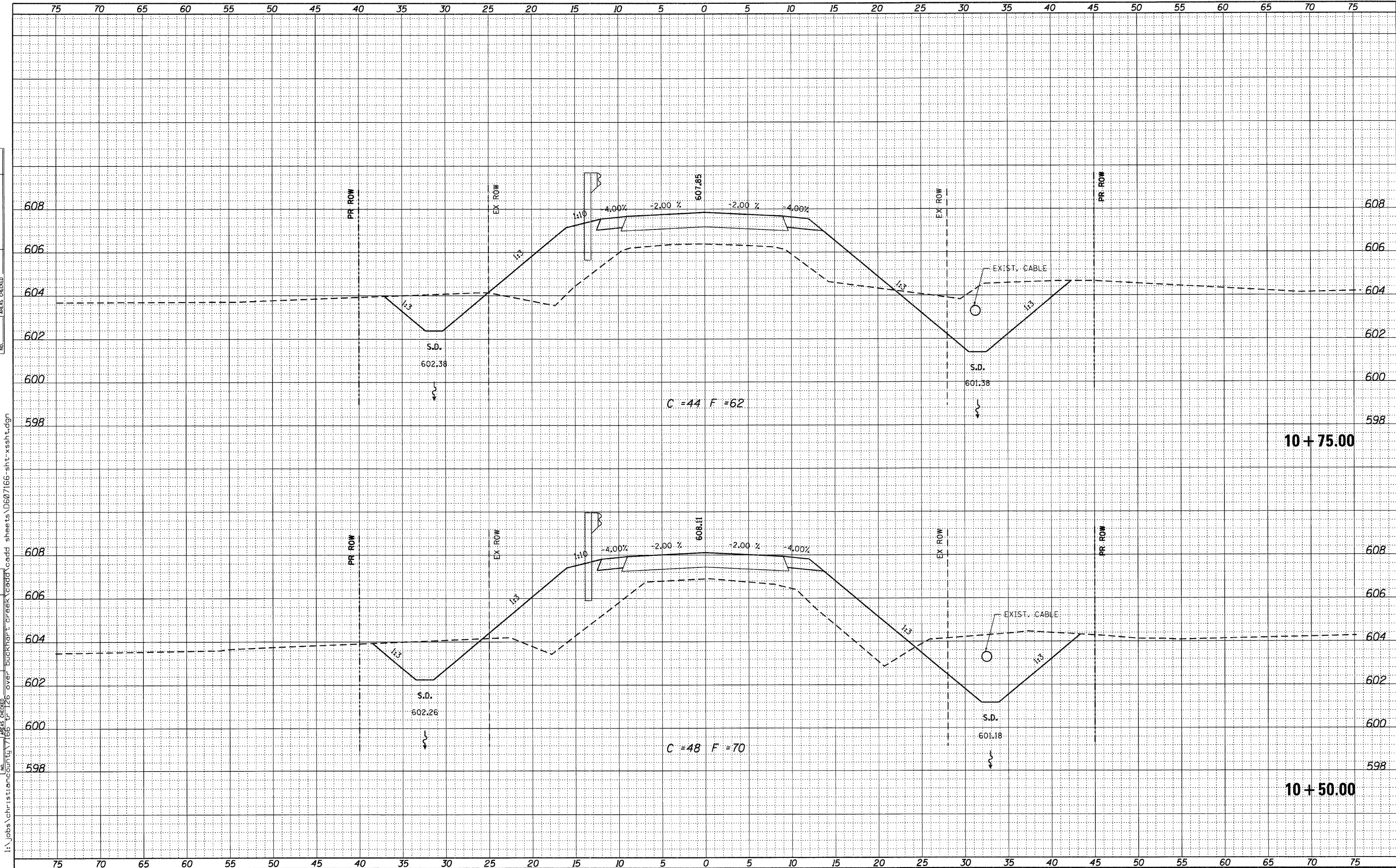


DATE	
BY	
FINAL SURVEY	
NOTED	
PLATE	
AREAS	
CHECKED	
NO.	

DATE	
BY	
ORIGINAL SURVEY	
NOTED	
PLATE	
AREAS	
CHECKED	
NO.	



USER NAME = dhaberling	DESIGNED - TJZ	REVISED
PLLOT SCALE = 5.0000' / IN.	DRAWN - DLH	REVISED
PLLOT DATE = 11/14/2011	CHECKED - SDS	REVISED
	DATE - 2/22/11	REVISED

WHKS & CO.
ENGINEERING

7018 KINGSMILL CT.,
SPRINGFIELD, IL
(217) 483-9457
DESIGN FIRM #184001036

STATE OF ILLINOIS
DEPARTMENT OF TRANSPORTATION

CROSS SECTIONS			
TR 216 OVER BUCKHART CREEK			
SCALE:	SHEET NO.	OF SHEETS	STA. 10+50.00 TO STA. 10+75.00

TR. RTE.	SECTION	COUNTY	TOTAL SHEETS	SHEET NO.
216	08-16112-00-BR	CHRISTIAN	26	20
				CONTRACT NO. 93559
ILLINOIS FED. AID PROJECT				

FILENAME: I:\jobs\christian\county\1166\tr 216 over buckhart creek\cadd\sheet\10+75.00.dgn