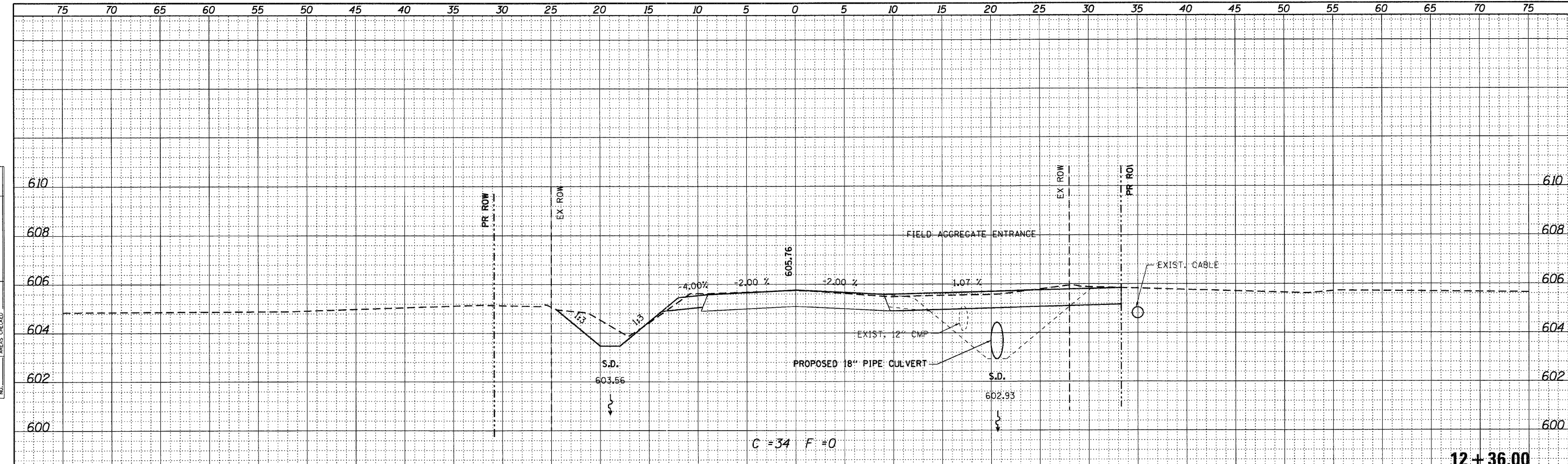
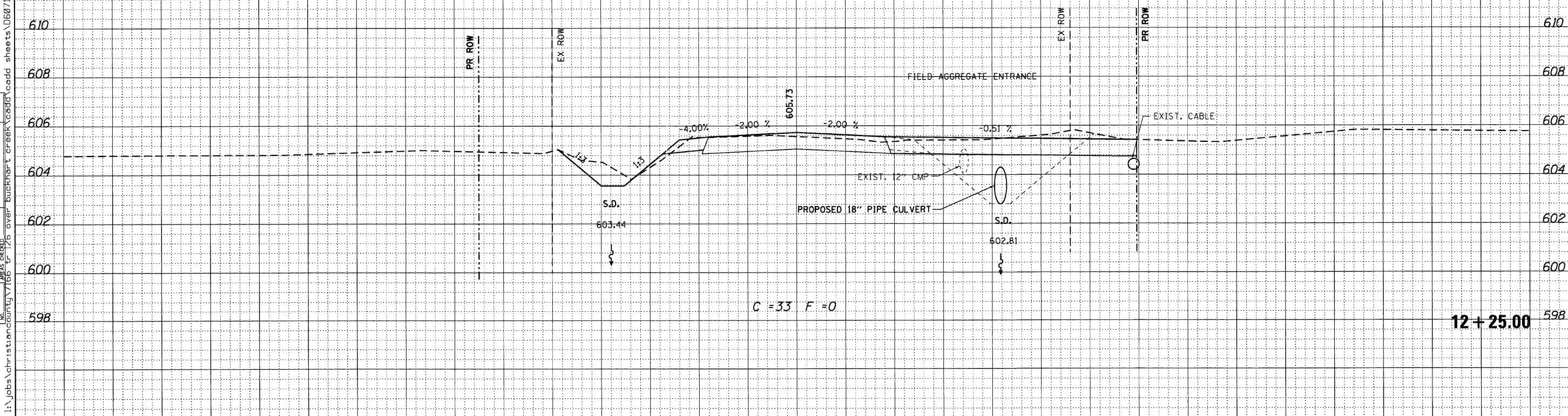


DATE	
BY	
FINAL SURVEY	
PLOTTED	
NOTE BOOK	
AREAS CHECKED	
NO.	



12+36.00

DATE	
BY	
ORIGINAL SURVEY	
PLOTTED	
NOTE BOOK	
AREAS CHECKED	
NO.	



12+25.00

USER NAME = dheber.ling	DESIGNED - T.JZ	REVISED		7018 KINGSMILL CT., SPRINGFIELD, IL (217) 483-9457 DESIGN FIRM #184001036	CROSS SECTIONS TR 216 OVER BUCKHART CREEK		TR. RTE.	SECTION	COUNTY	TOTAL SHEETS	SHEET NO.
PLLOT SCALE = 5.0000' / IN.	DRAWN - DLH	REVISED					216	08-16112-00-BR	CHRISTIAN	26	24
PLLOT DATE = 11/14/2011	CHECKED - SDS	REVISED			STATE OF ILLINOIS DEPARTMENT OF TRANSPORTATION		SCALE:	SHEET NO. OF SHEETS	STA. 12+25.00 TO STA. 12+36.00	CONTRACT NO. 93559 ILLINOIS FED. AID PROJECT	