

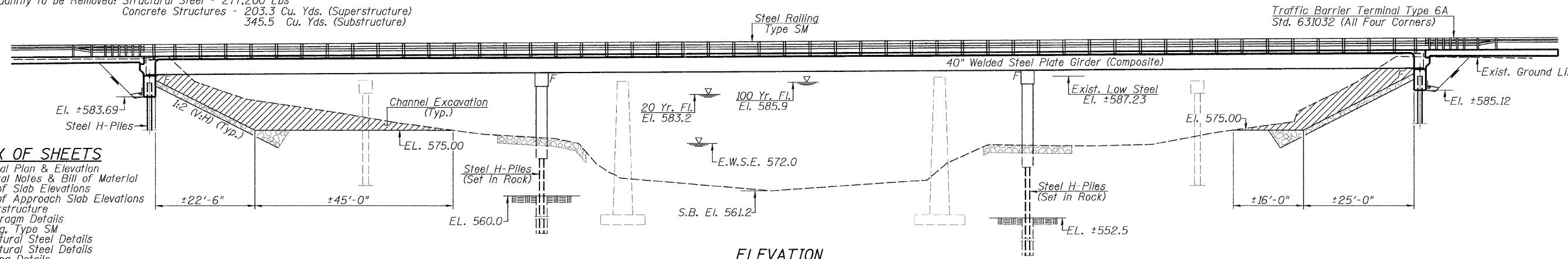
Benchmark: 60D Nail & Washer in Power Pole. Sta. 90+67 36' Rt. El. 589.80.

Existing Structure: S.N. 059-3007 was originally built as F.A.S. Route 733 Section 18B.18F in 1948 at Sta. 95+23. The original structure was a Five Span Steel I-Beam Bridge with R.C. Pile Bent Abutments, R.C. Pile Bent Piers on Precast Concrete Piles at Piers 1, 4, and R.C. Solid Wall Piers on Concrete Footings with Timber Piles at Piers 2 & 3. ±279'-6" Bk.-Bk. Abutments, 43'-3" (Spans 1 & 5), 57'-6" (Spans 2 & 4) 72'-0" (Span 3). ±28'-0" Out.-Out. Deck. 0° Skew.

No Salvage

Estimated Quantity to be Removed: Structural Steel - 277,200 Lbs  
Concrete Structures - 203.3 Cu. Yds. (Superstructure)  
345.5 Cu. Yds. (Substructure)

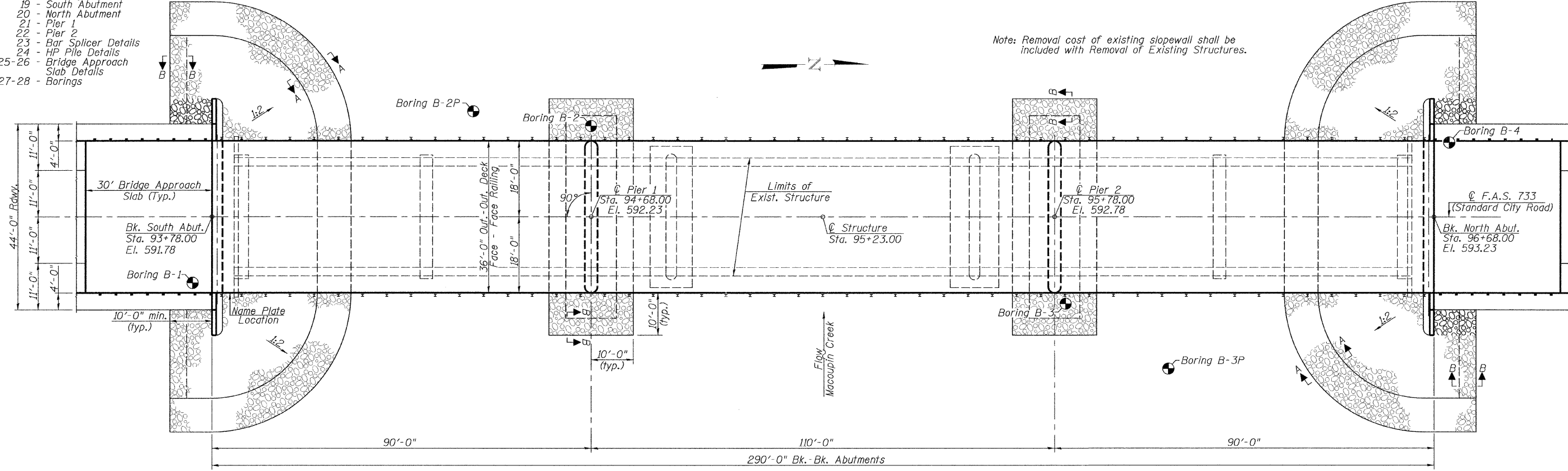
F.A.S. RTE.	SECTION	COUNTY	TOTAL SHEETS	SHEET NO.
733	06-00088-00-BR	MACOUPIN	35	6
FED. ROAD DIST. NO. ILLINOIS FED. AID PROJECT			CONTRACT NO.	



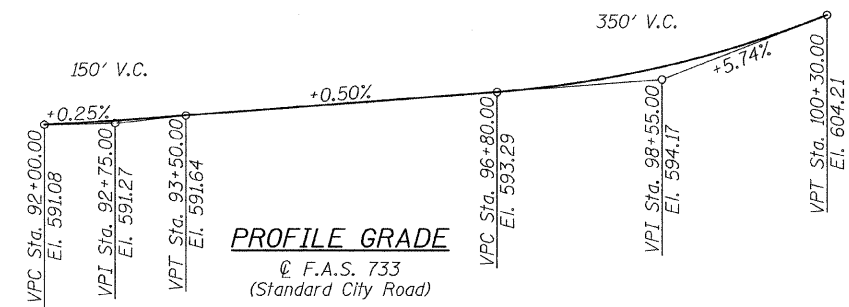
ELEVATION

- INDEX OF SHEETS**
- 6 - General Plan & Elevation
  - 7 - General Notes & Bill of Material
  - 8-10 - Top of Slab Elevations
  - 11-12 - Top of Approach Slab Elevations
  - 13 - Superstructure
  - 14 - Diaphragm Details
  - 15 - Railing, Type SM
  - 16 - Structural Steel Details
  - 17 - Structural Steel Details
  - 18 - Bearing Details
  - 19 - South Abutment
  - 20 - North Abutment
  - 21 - Pier 1
  - 22 - Pier 2
  - 23 - Bar Splicer Details
  - 24 - HP Pile Details
  - 25-26 - Bridge Approach Slab Details
  - 27-28 - Borings

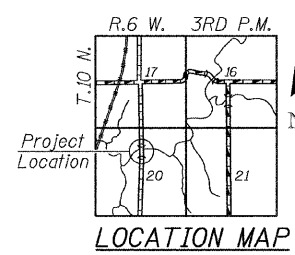
Note: Removal cost of existing slopewall shall be included with Removal of Existing Structures.



PLAN



PROFILE GRADE



LOCATION MAP

Date: 1/18/2011

*(Signature)*



I certify that to the best of my knowledge, information and belief, this bridge design is structurally adequate for the design loading shown on the plans. The design is an economical one for the style of structure and complies with requirements of the current "A.A.S.H.T.O. LRFD Bridge Design Specifications".

*(Signature)*  
Expiration Date 11/30/2012

FILE NAME =	USER NAME = #USER#	DESIGNED - F.L.L.	REVISED -
*FILE#		DRAWN - M.J.S.	REVISED -
		CHECKED -	REVISED -
		DATE -	REVISED -

**Allen Henderson & Associates, Inc.**  
Civil and Structural Engineers Springfield, IL  
62703 Phone: (217)544-8033 IL Design Firm  
No. 184-001907

SCALE: NONE		STA.	TO STA.
<b>GENERAL PLAN &amp; ELEVATION</b>			

F.A.S. RTE.	SECTION	COUNTY	TOTAL SHEETS	SHEET NO.
733	06-00088-00-BR	MACOUPIN	35	6
FED. ROAD DIST. NO. ILLINOIS FED. AID PROJECT			CONTRACT NO. 93562	