

F.A.S. RTE.	SECTION	COUNTY	TOTAL SHEETS	SHEET NO.
733	06-00088-00-BR	MACOUPIN	35	11
FED. ROAD DIST. NO.			ILLINOIS FED. AID PROJECT	
			CONTRACT NO.	

WEST EDGE OF APPROACH

Location	Station	Offset	Theoretical Grade Elevations
End S. Appr. Pav't.	93+48.00	-18.000	591.36
A1	93+58.00	-18.000	591.41
A2	93+68.00	-18.000	591.46
Bk. S. Abut.	93+78.00	-18.000	591.51

WEST EDGE OF PAVEMENT

Location	Station	Offset	Theoretical Grade Elevations
End S. Appr. Pav't.	93+48.00	-11.000	591.47
A1	93+58.00	-11.000	591.52
A2	93+68.00	-11.000	591.57
Bk. S. Abut.	93+78.00	-11.000	591.62

☉ ROADWAY & P.G.

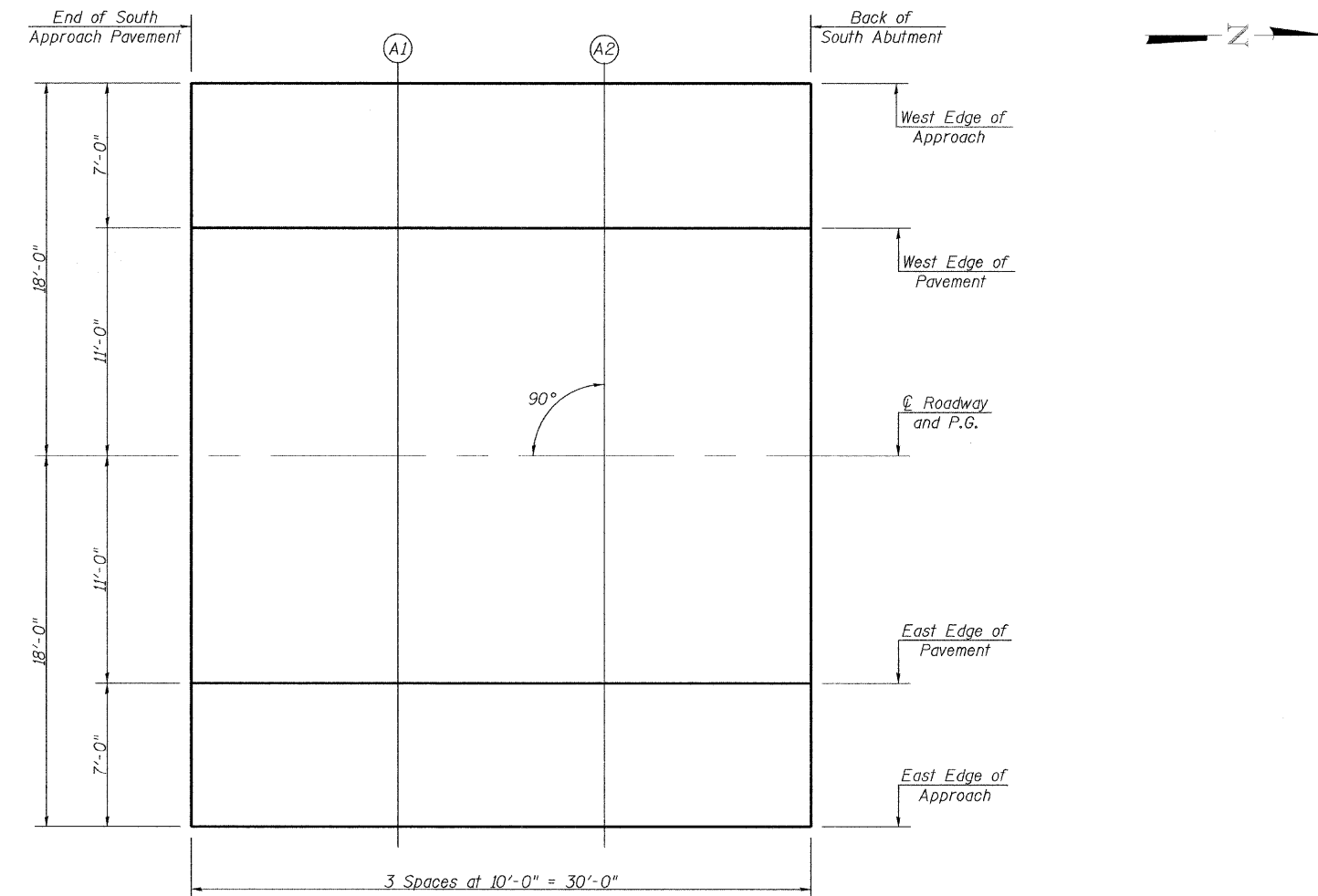
Location	Station	Offset	Theoretical Grade Elevations
End S. Appr. Pav't.	93+48.00	0.000	591.63
A1	93+58.00	0.000	591.68
A2	93+68.00	0.000	591.73
Bk. S. Abut.	93+78.00	0.000	591.78

EAST EDGE OF PAVEMENT

Location	Station	Offset	Theoretical Grade Elevations
End S. Appr. Pav't.	93+48.00	11.000	591.47
A1	93+58.00	11.000	591.52
A2	93+68.00	11.000	591.57
Bk. S. Abut.	93+78.00	11.000	591.62

EAST EDGE OF APPROACH

Location	Station	Offset	Theoretical Grade Elevations
End S. Appr. Pav't.	93+48.00	18.000	591.36
A1	93+58.00	18.000	591.41
A2	93+68.00	18.000	591.46
Bk. S. Abut.	93+78.00	18.000	591.51



PLAN

FILE NAME =	USER NAME = #USER#	DESIGNED -	REVISED -	 Allen Henderson & Associates, Inc. Civil and Structural Engineers Springfield, IL 62703 Phone: (217)544-8033 IL Design Firm No. 184-001907	TOP OF APPROACH SLAB ELEVATIONS		F.A.S. RTE.	SECTION	COUNTY	TOTAL SHEETS	SHEET NO.
#FILE#		DRAWN -	REVISED -		733	06-00088-00-BR	MACOUPIN	35	11		
	PLOT SCALE = #SCALE#	CHECKED -	REVISED -		CONTRACT NO. 93562			FED. ROAD DIST. NO. ILLINOIS FED. AID PROJECT			
	PLOT DATE = #DATE#	DATE -	REVISED -		SCALE: NONE	STA.	TO STA.				