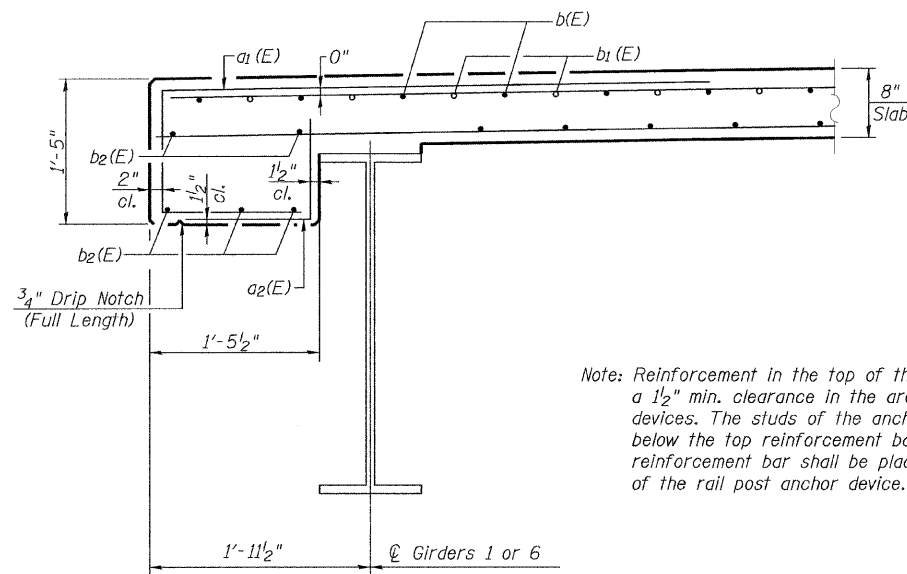
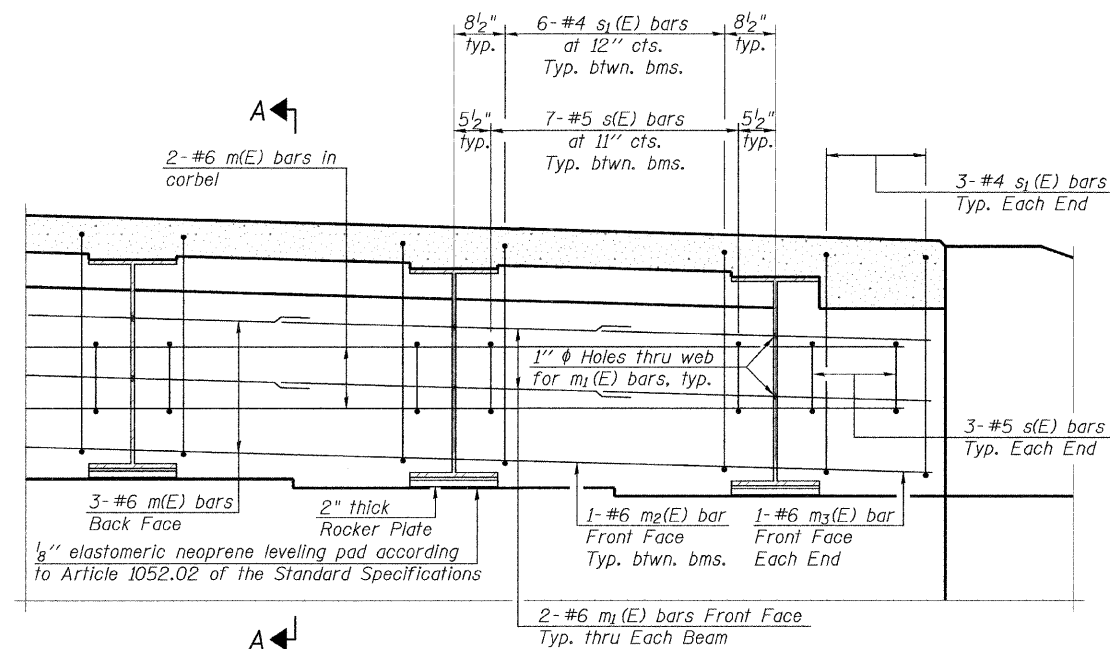


F.A.S. RTE.	SECTION	COUNTY	TOTAL SHEETS	SHEET NO.
733	06-00088-00-BR	MACOUPIN	35	14
FED. ROAD DIST. NO.		ILLINOIS FED. AID PROJECT		
		CONTRACT NO.		

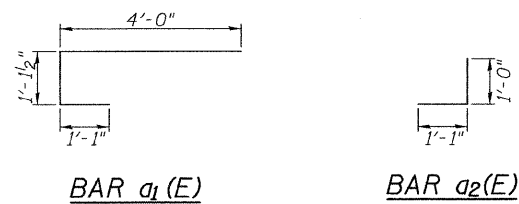


SECTION THRU EDGE OF SLAB

Note: Reinforcement in the top of the deck may be placed with a 1/2" min. clearance in the area of the rail post anchor devices. The studs of the anchor devices shall be placed below the top reinforcement bars and outermost longitudinal reinforcement bar shall be placed directly above the studs of the rail post anchor device.



DIAPHRAGM ELEVATION AT ABUTMENT

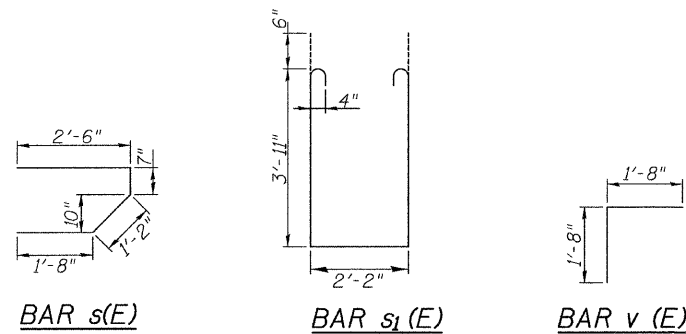


BAR a1(E)

BAR a2(E)

Notes:  
 Reinforcement bars in diaphragm are billed with superstructure on sheet 13 of 35.  
 Concrete in diaphragm is included with Concrete Superstructure on sheet 13 of 35.  
 The s(E) and s1(E) bars shall be placed parallel to the girders. Spacing for these bars shall be at right angles to the girders.

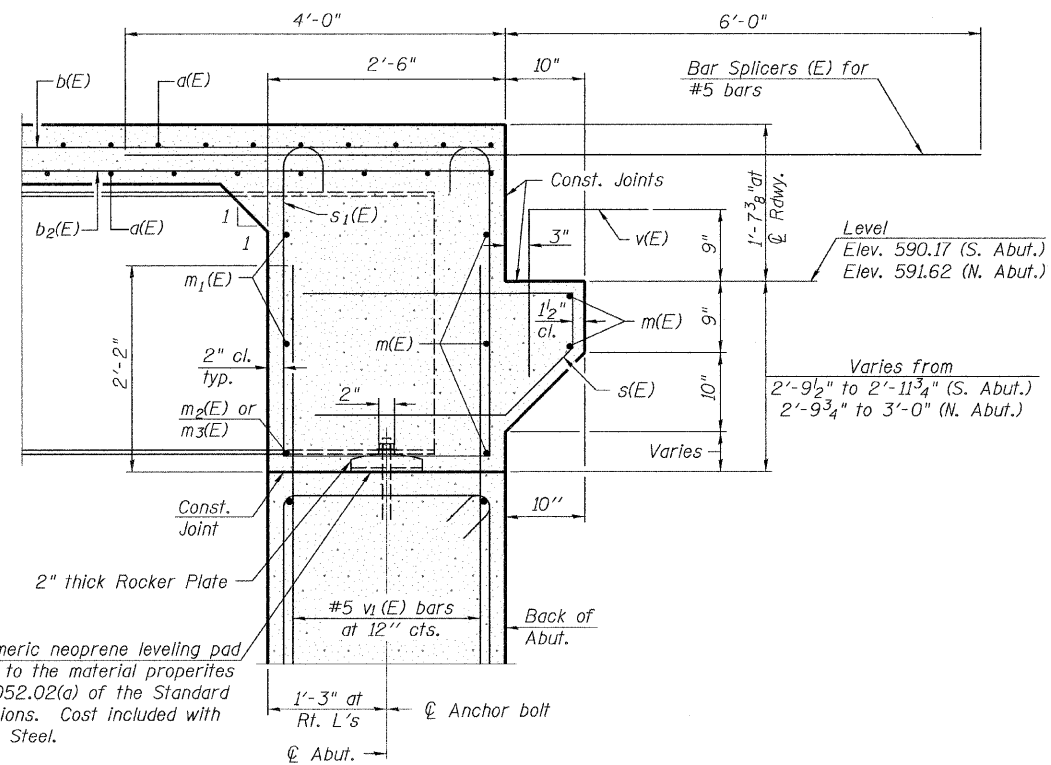
MIN. BAR LAP  
 #6 bar = 2'-9"



BAR s(E)

BAR s1(E)

BAR v(E)



SECTION A-A

Dimensions at right angles to abutment, except as shown.

SI-DS1 11-1-06

FILE NAME =	USER NAME = #USER#	DESIGNED -	REVISED -		<b>Allen Henderson &amp; Associates, Inc.</b> Civil and Structural Engineers Springfield, IL. 62703 Phone: (217)544-8033 IL. Design Firm No. 184-001907	DIAPHRAGM DETAILS		F.A.S. RTE.	SECTION	COUNTY	TOTAL SHEETS	SHEET NO.
#FILE#	PLOT SCALE = #SCALE#	DRAWN -	REVISED -			733	06-00088-00-BR	MACOUPIN	35	14		
	PLOT DATE = #DATE#	CHECKED -	REVISED -			CONTRACT NO. 93562						
		DATE -	REVISED -			FED. ROAD DIST. NO. ILLINOIS FED. AID PROJECT						