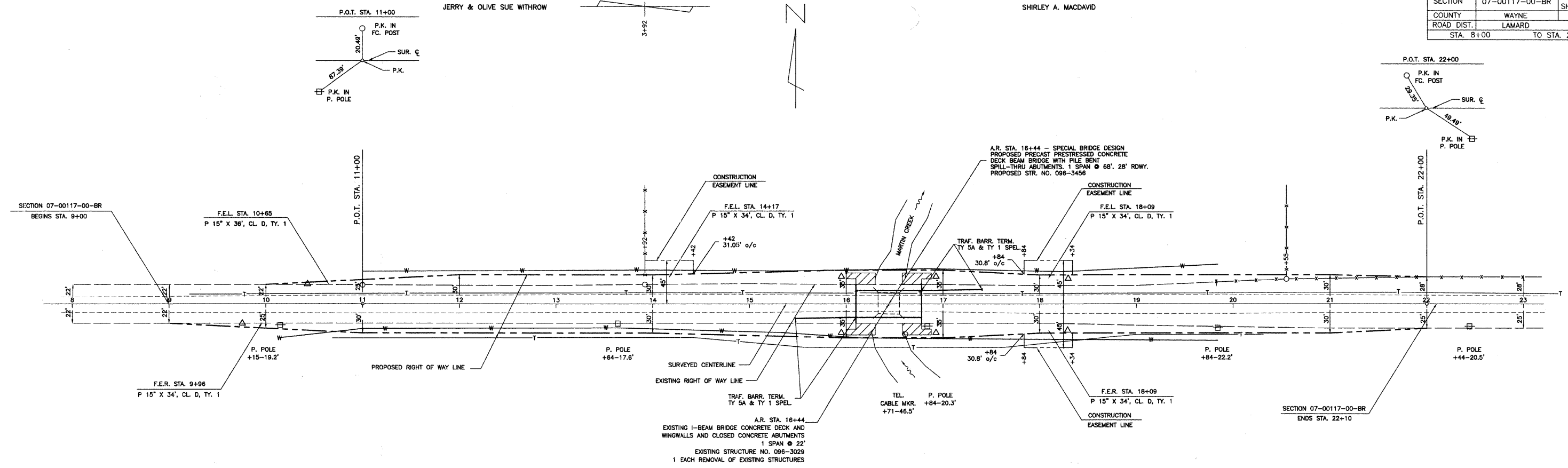


SECTION	07-00117-00-BR	TOTAL SHEETS	11	SHEET NO.	3
COUNTY	WAYNE				
ROAD DIST.	LAMARD				
STA.	8+00	TO STA.	22+00		

JERRY & OLIVE SUE WITHROW

SHIRLEY A. MACDAVID

SHARRI GIFFORD



TREE REMOVAL

6 TO 15 UNITS DIA.	OVER 15 UNITS DIA.
19' LT. STA. 12+41	9
19' LT. STA. 12+83	7
20' LT. STA. 13+01	8
19' LT. STA. 13+11	8
24' LT. STA. 13+91	19
27' LT. STA. 16+66	8
26' LT. STA. 20+67	15
TOTALS =	55 UNITS DIA. 19 UNITS DIA.

B.M. #1 ELEVATION 412.18
P.K. IN CORNER POST
46' LT. STA. 11+00

AGGREGATE BASE COURSE, TYPE B, 8"

STA. 9+00 TO STA. 16+09 =	850 TON
STA. 16+79 TO STA. 22+10 =	633 TON
TOTAL =	1483 TON

EARTHWORK SCHEDULE

EARTH EXCAVATION	924 CU YD
EARTH EXCAVATION ADJUSTED 25%	693 CU YD
CHANNEL EXCAVATION	490 CU YD
CHANNEL EXCAVATION ADJUSTED 25%	368 CU YD
EMBANKMENT	5200 CU YD
FURNISHED EXCAVATION	4139 CU YD

PERIMETER EROSION BARRIER
LOCATE ALONG TOE OF CHANNEL SLOPE
15 FEET @ EACH COR. BRIDGE = 60 FEET

TEMPORARY DITCH CHECKS Δ

RT. STA. 9+80	● 9 FT. EA. =	9 FT.
LT. STA. 10+65	● 12 FT. EA. =	12 FT.
LT. & RT. STA. 16+00	● 12 FT. EA. =	24 FT.
LT. & RT. STA. 16+90	● 12 FT. EA. =	24 FT.
LT. & RT. STA. 18+30	● 8 FT. EA. =	16 FT.
TOTAL =	85 FT.	

B.M. #2 ELEVATION 407.85
P.K. IN FENCE POST
22.8' LT. STA. 18+23

AGGREGATE DITCH (SPECIAL)

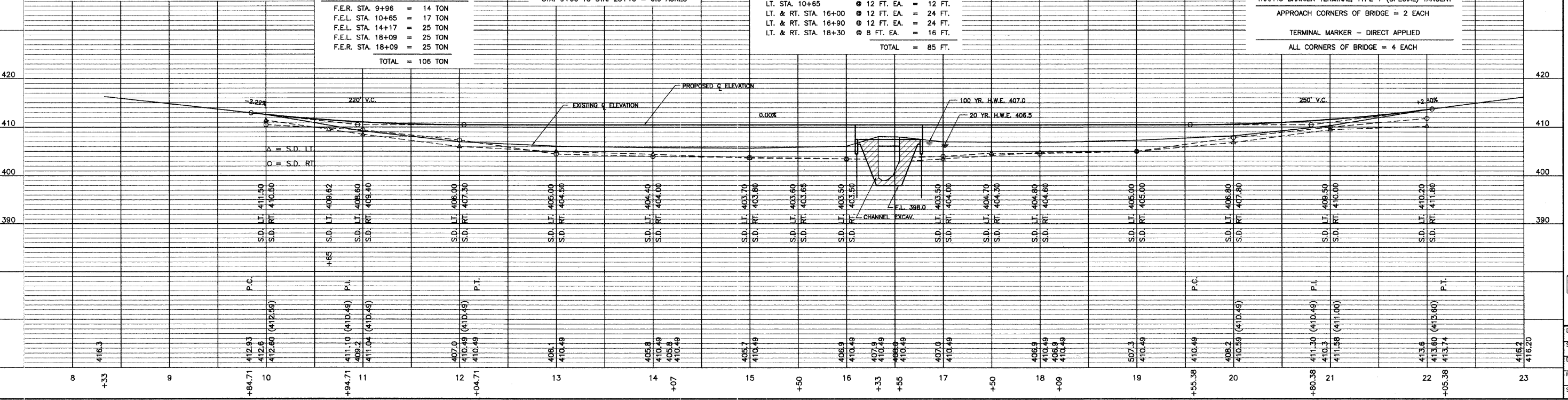
LT. & RT. STA. 16+00 TO STA. 16+30 =	34 TON
LT. & RT. STA. 16+58 TO STA. 16+88 =	34 TON
TOTAL =	68 TON

CONSTRUCT TRANSITIONS
FROM EXISTING ROADWAY TO PROPOSED 30' ROADWAY
STA. 9+00 TO STA. 10+00
STA. 21+10 TO STA. 22+10

TRAFFIC BARRIER TERMINAL, TYPE 5A
APPROACH CORNERS OF BRIDGE = 2 EACH

TRAFFIC BARRIER TERMINAL, TYPE 1 (SPECIAL) TANGENT
APPROACH CORNERS OF BRIDGE = 2 EACH

TERMINAL MARKER - DIRECT APPLIED
ALL CORNERS OF BRIDGE = 4 EACH



CONNOR & CONNOR, Inc.
CONSULTING ENGINEERS
210 East Locust Street
ROBINSON, ILLINOIS 62454
Phone: 618-544-8623
Fax: 618-544-3012
Licensed Surveyors

DATE: 3/23/2011
SCALE: 1" = 50'
DRAWN BY DJC
PROJECT: P-1548
SHEET: OF