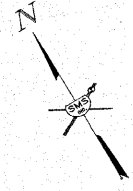
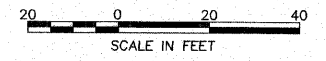


SECTION	COUNTY	TOTAL SHEETS	SHEET NO.
08-00021-00-PK	MADISON	9	4
CONTRACT NO. 97473			

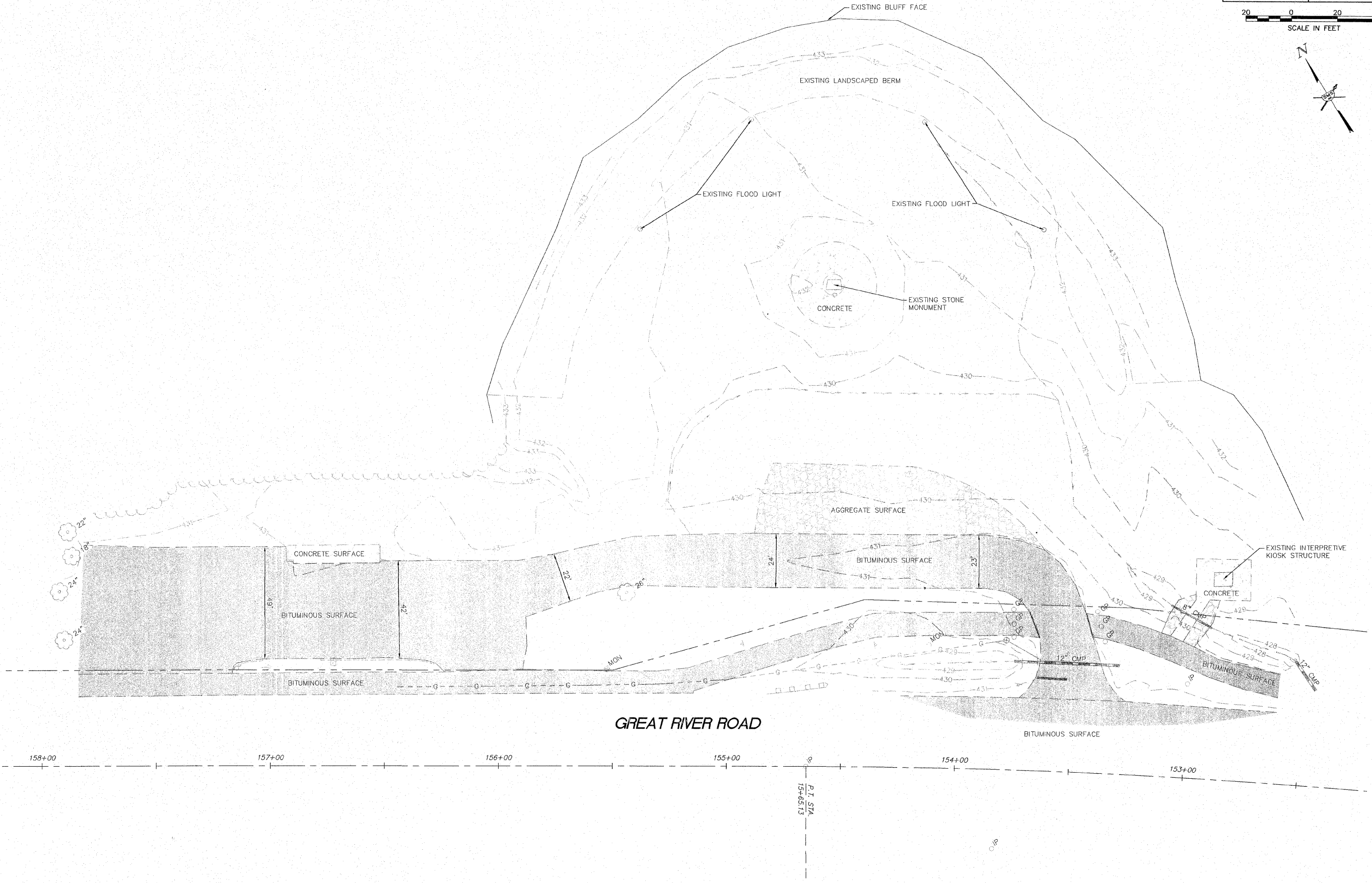


REVISIONS

SMS ENGINEERS
 CONSULTING ENGINEERS AND LAND SURVEYORS
 215 Market Street, P.O. Box E, Alton, IL 62002 618462-9755 E-mail: mail@smsengineers.com
 10 Central Industrial Drive, Suite 3, Granite City, IL 62040 618377-9700 E-mail: mail@smsengineers.com
 DESIGN FIRM # 184-000992

**IMPROVEMENT PLANS FOR HOFFMAN GARDENS
 VILLAGE OF GODFREY, ILLINOIS
 EXISTING SITE PLAN**

DWG. NO.	HOFFMAN EXISTING SITE.DWG
REF. BK.	PG.
JOB NO.	437560
DSN. BY:	SJW/DDT
DWN. BY:	BCS
CHK. BY:	SJW
DATE:	JANUARY, 2012
SCALE:	1"=20'
SHEET	C3 OF 9



S:\land projects\GODFREY PAR (437560)\HOFFMAN GARDENS\dwg\HOFFMAN EXISTING SITE.dwg, 1/16/2012 11:52:19 AM, btopeters, 1:20