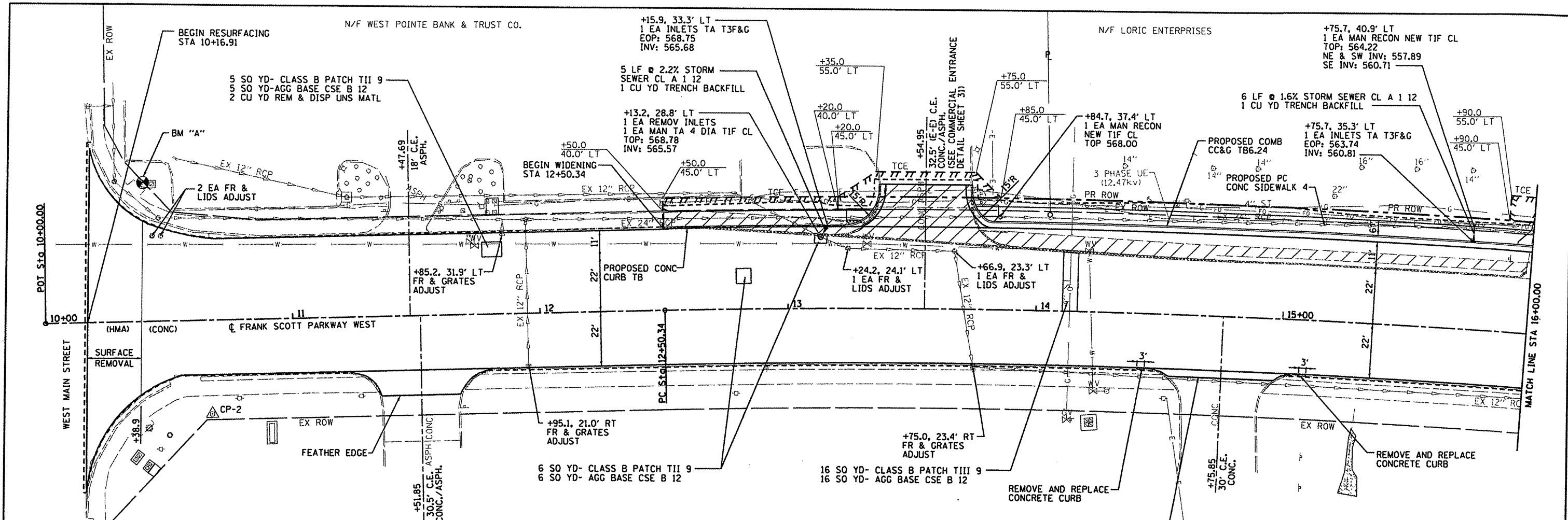


DATE	
BY	
REVISION	
NO.	
DATE	
BY	
REVISION	
NO.	
DATE	
BY	
REVISION	
NO.	

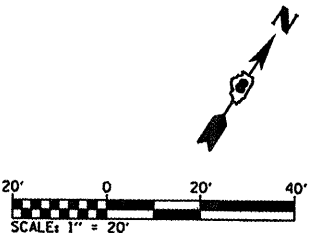
DATE	
BY	
REVISION	
NO.	
DATE	
BY	
REVISION	
NO.	
DATE	
BY	
REVISION	
NO.	



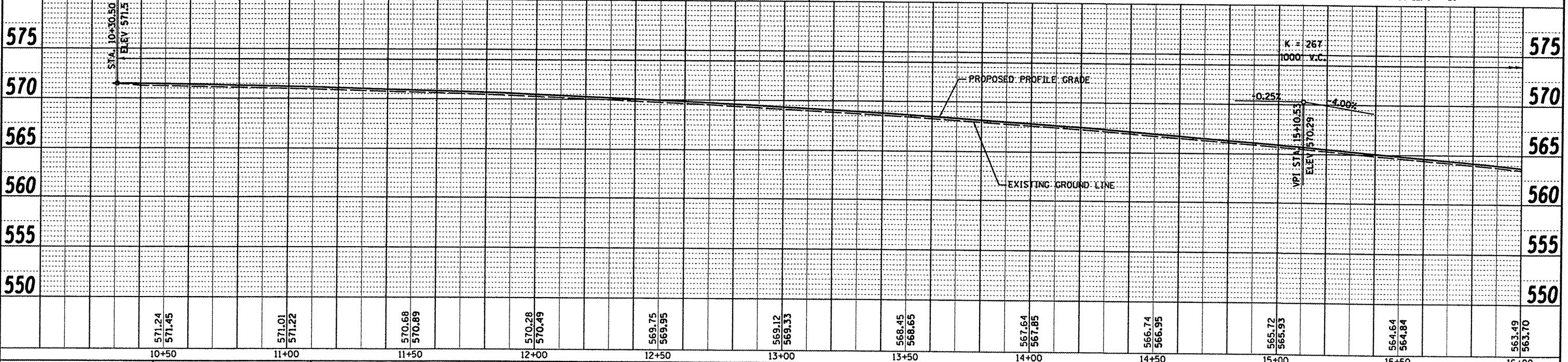
LEGEND

- PR CONSTRUCTION LIMITS
- X TREE REMOVAL
- [Hatched Box] SIDEWALK / DRIVEWAY PAVEMENT REMOVAL
- [Stippled Box] CURB REMOVAL/COMBINATION CURB & GUTTER REMOVAL

Q CURVE DATA
 PI STA. = 15+83.65
 Δ = 9° 58' 25" (RT)
 D = 1° 30' 00"
 R = 3,819.83'
 T = 333.31'
 L = 664.93'
 E = 14.51'
 e = NC
 P.C. STA = 12+50.34
 P.T. STA = 19+15.27



BM "A" - STA 10+40.08, 55.68' LT
 USGS DISC IN MASTARM NW QUAD
 S. MAIN & FSPW
 ELEV - 572.16



FILE NAME = H:\P2\9861\Microstation\CADD Sheets\029861	USER NAME = default	DESIGNED -	REVISED -	STATE OF ILLINOIS DEPARTMENT OF TRANSPORTATION		FRANK SCOTT PARKWAY WEST PLAN & PROFILE SHEETS		F.A.U. RTE. 9330	SECTION 08-00211-00-PV	COUNTY ST. CLAIR	TOTAL SHEETS 85	SHEET NO. 13
		DRAWN -	REVISED -			SCALE:	SHEET NO. OF SHEETS	STA. 10+00 TO STA. 16+00	CONTRACT NO. 97480		ILLINOIS FED. AID PROJECT	
		CHECKED -	REVISED -									
		DATE -	REVISED -									