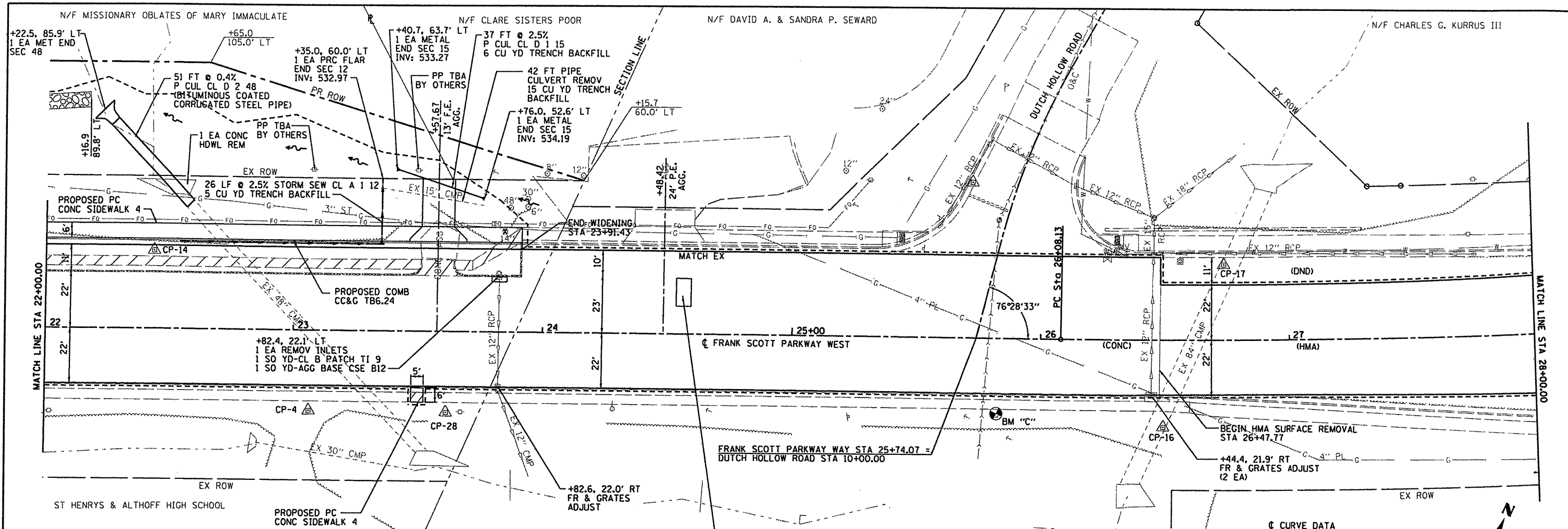


DATE	
BY	
REVISIONS	
PLANNED	
ALIGNED	
CHECKED	
NO. FILE NAME	
PLAN	
NOTE BOOK	
NO.	

DATE	
BY	
REVISIONS	
PLANNED	
ALIGNED	
CHECKED	
NO. FILE NAME	
PROF ILE	
NOTE BOOK	
NO.	



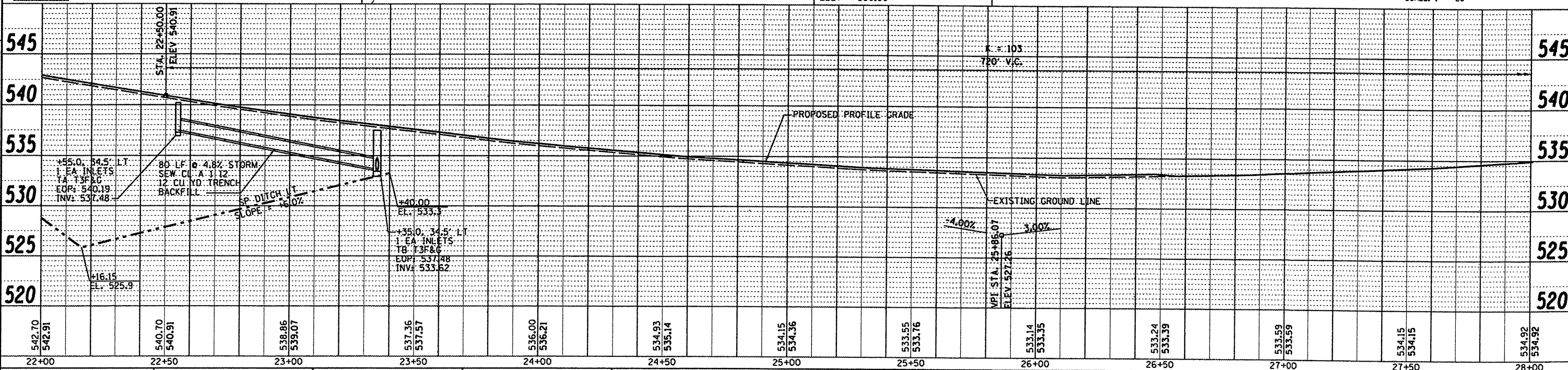
LEGEND

- PR CONSTRUCTION LIMITS
- x TREE REMOVAL
- ▨ SIDEWALK / DRIVEWAY PAVEMENT REMOVAL
- ▩ CURB REMOVAL/COMBINATION CURB & GUTTER REMOVAL

☉ CURVE DATA

PI STA. = 30+27.23
 $\Delta = 12^\circ 31' 22''$ (LT)
 $D = 1^\circ 30' 00''$
 $R = 3,819.83'$
 $T = 419.11'$
 $L = 834.87'$
 $E = 22.92'$
 $\theta = NC$
 P.C. STA = 26+08.13
 P.T. STA = 34+43.00

SCALE: 1" = 20'



FILE NAME = H:\P\29081\Microstation\CADD Sheets\029081	USER NAME = default	DESIGNED -	REVISED -	STATE OF ILLINOIS	FRANK SCOTT PARKWAY WEST	F.A.U. RTE. 9330	SECTION 08-00211-00-PV	COUNTY ST. CLAIR	TOTAL SHEETS 85	SHEET NO. 15
PLOT SCALE = 40.0000' / IN.	PLOT DATE = 10/31/2011	DRAWN -	REVISED -	DEPARTMENT OF TRANSPORTATION	PLAN & PROFILE SHEETS	SCALE:	SHEET NO. OF SHEETS	STA. 22+00 TO STA. 28+00	CONTRACT NO. 97480	ILLINOIS FED. AID PROJECT