

WILLIAMSON COUNTY				
F. A. P. 331 (IL 13)				
80% FEDERAL / 20% STATE				
ROADWAY	BNSF RAILROAD BRIDGE	MARATHON DR BRIDGE	MSE WALLS	LIGHTING & TRAFFIC SIGNALS
STA. 1729+56.07 TO STA. 1767+07.23	100-0093 100-0094	100-0095 100-0096	100-W001 100-W002 100-W003	

CODE NO.	ITEM DESCRIPTION	UNIT	TOTAL QUANTITY	CONSTRUCTION TYPE CODE				
				0003	0008	0008	0008	0021
31100900	SUBBASE GRANULAR MATERIAL, TYPE A 10"	SQ YD	6,190	6,190				
31101200	SUBBASE GRANULAR MATERIAL, TYPE B 4"	SQ YD	12,235	12,235				
31200100	STABILIZED SUBBASE 4"	SQ YD	41,113	41,113				
40201000	AGGREGATE FOR TEMPORARY ACCESS	TON	227.9	227.9				
40600100	BITUMINOUS MATERIALS (PRIME COAT)	GALLON	6,691.6	6,691.6				
40600300	AGGREGATE (PRIME COAT)	TON	16.4	16.4				
40600982	HOT-MIX ASPHALT SURFACE REMOVAL - BUTT JOINT	SQ YD	371	371				
40600990	TEMPORARY RAMP	SQ YD	1,430	1,430				
40603090	HOT-MIX ASPHALT BINDER COURSE, IL-19.0, N90	TON	6,049.9	6,049.9				
40603245	POLYMERIZED HOT-MIX ASPHALT BINDER COURSE, IL-19.0, N105	TON	745.3	745.3				
40603550	POLYMERIZED HOT-MIX ASPHALT SURFACE COURSE, MIX "D", N105	TON	655.6	655.6				
40603575	POLYMERIZED HOT-MIX ASPHALT SURFACE COURSE, MIX "E", N105	TON	252.5	252.5				
40701881	HOT MIX ASPHALT PAVEMENT (FULL DEPTH), 10"	SQ YD	10,702	10,702				
42000411	PORTLAND CEMENT CONCRETE PAVEMENT 9 1/2" (JOINTED)	SQ YD	36,114	36,114				

⚠ REVISÉD 2/24/12

FILE NAME =	USER NAME = Matt Overboy	DESIGNED -	REVISED -
3:\data\090603\draw\cadd\sheet\019885	sht-502001.dgn	DRAWN -	REVISED -
	PLOT SCALE = 50.0000" / IN.	CHECKED -	REVISED -
	PLOT DATE = 12/14/2011	DATE = 12/9/11	REVISED -

STATE OF ILLINOIS
DEPARTMENT OF TRANSPORTATION

SUMMARY OF QUANTITIES ILLINOIS ROUTE 13			
SCALE: N/A	SHEET NO. OF	SHEETS	STA. N/A TO STA. N/A

F.A. RTE.	SECTION	COUNTY	TOTAL SHEETS	SHEET NO.
331	(IX-1) VB-1, B-1, N-4, R-3	WILLIAMSON	367	6
CONTRACT NO. 98859			ILLINOIS FED. AID PROJECT	

TEMPORARY CONCRETE BARRIER WALL

STATION / LOCATION		TEMPORARY CONCRETE BARRIER	RELOCATE TEMPORARY CONCRETE BARRIER	IMPACT ATTENUATORS, TEMPORARY (NON-REDIRECTIVE), TL2	IMPACT ATTENUATORS, TEMPORARY (FULLY REDIRECTIVE, NARROW), TL2	IMPACT ATTENUATORS, RELOCATE (NON-REDIRECTIVE), TL2	IMPACT ATTENUATORS, RELOCATE (FULLY REDIRECTIVE, NARROW), TL2	MODULAR GLARE SCREEN SYSTEM	MONODIRECTIONAL PRISMATIC BARRIER REFLECTOR	
STATION	TO	STATION	(FOOT)	(FOOT)	(EACH)	(EACH)	(EACH)	(EACH)	(FOOT)	(EACH)
STAGE 1B										
IL 13										
1725+00.00	-	1738+00.00	1,092		1	3			937	21
1738+00.00	-	1751+00.00	2,680			4			1,167	39
1751+00.00	-	1764+00.00	2,436			2			1,131	37
1764+00.00	-	1755+00.00	1,118						626	19
STAGE 1B SUBTOTALS			7,326	0	1	9	0	0	3,861	116
STAGE 2A										
IL 13										
1725+00.00	-	1738+00.00		790			1	1	598	
1738+00.00	-	1751+00.00		2,211				1	1,247	
1751+00.00	-	1764+00.00		2,102				3	1,148	
1764+00.00	-	1755+00.00		572				1	572	
STAGE 2A SUBTOTALS			0	5,675	0	0	1	6	3,565	0
TOTALS			7,326	5,675	1	9	1	6	7,426	116

TEMPORARY PAVING

STATION / LOCATION		PAVEMENT REMOVAL	HMA PAVEMENT (FULL DEPTH) 10"	SUBBASE GRANULAR MATERIAL, TYPE B 4"	HOT-MIX ASPHALT BINDER COURSE, IL-19.0, N90	TEMPORARY RAMPS	BITUMINOUS MATERIALS (PRIME COAT)	
STATION	TO	STATION	(SQ YD)	(SQ YD)	(SQ YD)	(TON)	(SQ YD)	(GAL)
STAGE 1A								
IL 13								
1725+00.00	-	1738+00.00	2,062	2,062	2,414	1,154.7		824.8
1738+00.00	-	1751+00.00	4,202	4,121	4,470	2,316.8		1,648.4
1751+00.00	-	1764+00.00	2,356	2,356	2,755	1,319.4		942.4
1764+00.00	-	1775+00.00	872	872	1,004	488.3		348.8
STAGE 1B								
IL 13								
1725+00.00	-	1738+00.00	172	172	213	96.3		68.8
1738+00.00	-	1751+00.00	208	11	19	28.2		4.4
1751+00.00	-	1764+00.00	45			5.0		
STAGE 1C								
IL 13								
1725+00.00	-	1738+00.00	142	142	168	79.5	1,142	56.8
STAGE 1D								
SKYLINE DR. (SOUTH)								
							93	
STAGE 1F								
IL 13								
1725+00.00	-	1738+00.00	349	349	447	195.4		139.6
1764+00.00	-	1775+00.00	421	421	519	235.8		168.4
STAGE 2A								
IL 13								
1751+00.00	-	1764+00.00	104	104	119	58.2		41.6
STAGE 2C								
SKYLINE DR. (NORTH)								
12+73.17	-	13+13.17					54	
STAGE 2D								
SKYLINE DR. (NORTH)								
12+73.17	-	14+15.00					141	
STAGE 2E								
IL 13								
1725+00.00	-	1738+00.00	92	92	107	51.5		36.8
TOTALS			11,025	10,702	12,235	6,029.1	1,430	4,280.8

1 REVISSED
2/24/12

FILE NAME =	USER NAME =	DESIGNED -	REVISED -
I:\dot\0906083\draw\cadd\sheet\099885	OpenH86 Springfield	MJO	
	Plot-Schedules.Add.dgn	DRAWN -	REVISED -
		MJO	
	PLOT SCALE = 50.0000 / IN.	CHECKED -	REVISED -
		BMB	
	PLOT DATE = 2/23/2012	DATE -	REVISED -
		12/9/11	






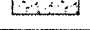
STATE OF ILLINOIS
DEPARTMENT OF TRANSPORTATION

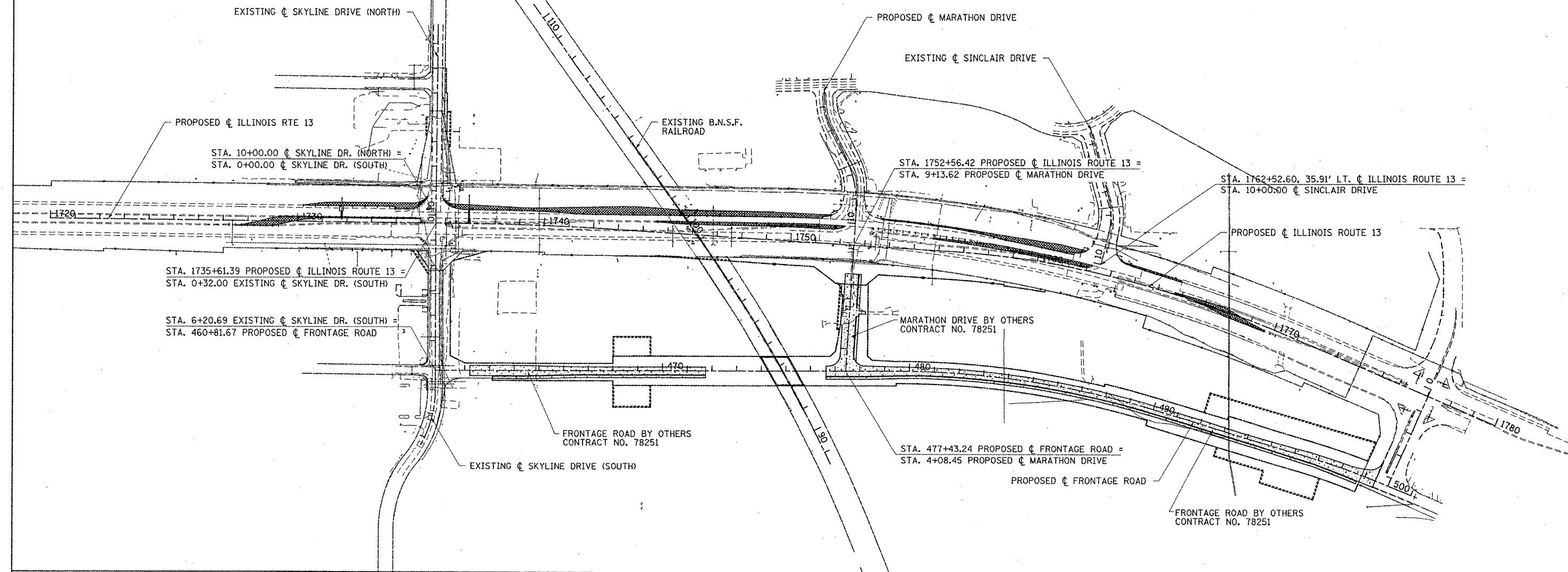
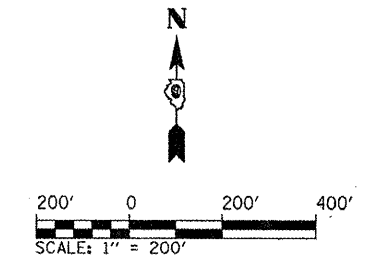
SCHEDULE OF QUANTITIES

SCALE: SHEET NO. OF SHEETS STA. TO STA.

F.A. RTE.	SECTION	COUNTY	TOTAL SHEETS	SHEET NO.
331	(1X-1) VB-1, B-1, N-4, R-3	WILLIAMSON	367	48
CONTRACT NO. 98859			ILLINOIS FED. AID PROJECT	

LEGEND

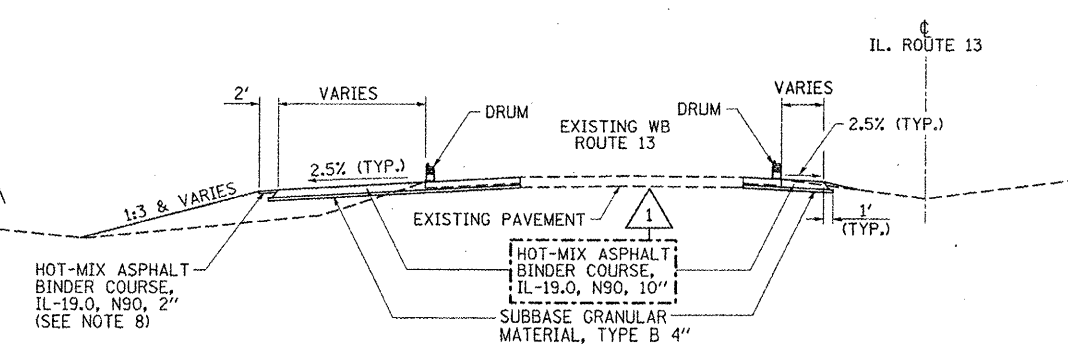
-  WORK ZONE (STAGE AS SPECIFIED)
-  TEMPORARY PAVEMENT
-  COMPLETED TEMPORARY PAVEMENT
-  TEMPORARY RAMP
-  COMPLETED TEMPORARY RAMP
-  COMPLETED PAVEMENT



**STAGE 1A
ILLINOIS RTE. 13**

NOTES:

1. ADDITIONAL TRAFFIC CONTROL DEVICES MAY BE NECESSARY AS DIRECTED BY THE ENGINEER.
2. TRAFFIC CONTROL FOR THIS WORK SHALL BE PAID FOR AS TRAFFIC CONTROL AND PROTECTION, (SPECIAL), LUMP SUM.
3. REMOVE EXISTING HOT-MIX ASPHALT SHOULDERS, CONSTRUCT TEMPORARY PAVEMENT, REQUIRED GRADING, AND DRAINAGE ITEMS AS SHOWN ON STAGE 1A SHEETS.
4. INSTALL TEMPORARY SIGNALS AT THE INTERSECTIONS OF ILLINOIS ROUTE 13 AT SKYLINE DRIVE AND SINCLAIR DRIVE.
5. IF LANE CLOSURES ARE NEEDED, SET UP TRAFFIC CONTROL DEVICES ACCORDING TO STANDARD 701601.
6. WORK DURING THIS STAGE, REQUIRING A LANE CLOSURE, SHALL BE COMPLETED DURING OFF-PEAK HOURS. LANE CLOSURES DURING PEAK HOURS WILL NOT BE ALLOWED.
7. MAINTAIN TRAFFIC IN EXISTING LANES.
8. A 2" WIDE 2" THICK STRIP OF HOT-MIX ASPHALT BINDER COURSE, IL-19.0, N90 PAVEMENT SHALL BE PLACED ON THE NORTH SIDE OF THE WB LANES PRIOR TO SWITCHING TO STAGE 1B TO SERVE AS THE PAD TO PLACE AND PIN THE TEMPORARY CONCRETE BARRIER, THE LIMITS OF THE TEMPORARY PAVEMENT STRIP ARE FROM STA. 1745+65.00 TO STA. 1749+25.27.



STAGE 1A TYPICAL SECTION
TEMPORARY PAVEMENT AS SHOWN ON MOT

REVIS

2/24/12

FILE NAME =	USER NAME = OpenH&B Springfield	DESIGNED - KPF	REVISED - 2/21/2012 BMB
I:\dot\0906603\draw\oadd.sheets\099885	plst-mot-stage1a-1.Addl.dgn	DRAWN - TAP	REVISED -
	PLOT SCALE = 200,0000 / IN.	CHECKED - SPH	REVISED -
	PLOT DATE = 2/23/2012	DATE - 12/9/11	REVISED -

**STATE OF ILLINOIS
DEPARTMENT OF TRANSPORTATION**

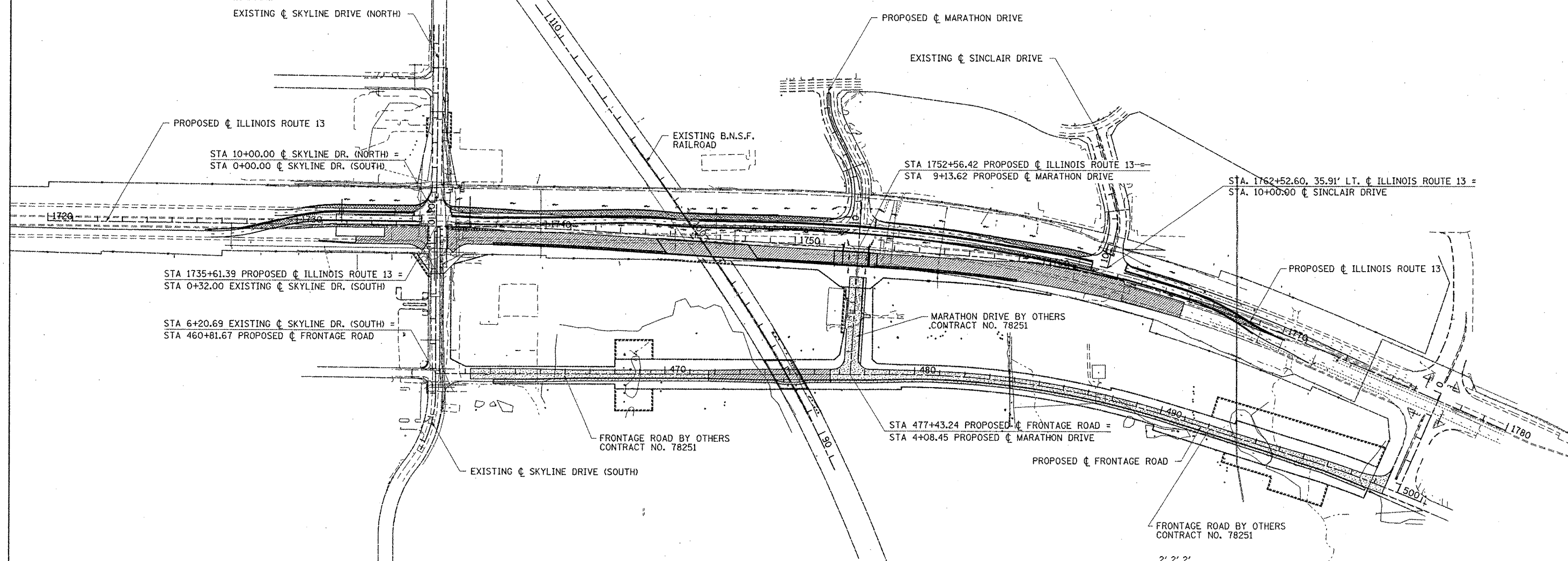
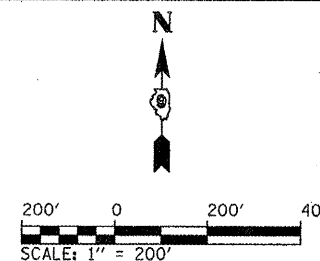
**STAGE 1A CONSTRUCTION
OVERALL TRAFFIC CONTROL PLAN**

SCALE: 1" = 200' SHEET NO. OF SHEETS STA. 1720+00.00 TO STA. 1780+00.00

F.A. RTE.	SECTION	COUNTY	TOTAL SHEETS	SHEET NO.
331	(IX-1) VB-1, B-1, N-4, R-3	WILLIAMSON	367	65
			CONTRACT NO. 98859	
ILLINOIS FED. AID PROJECT				

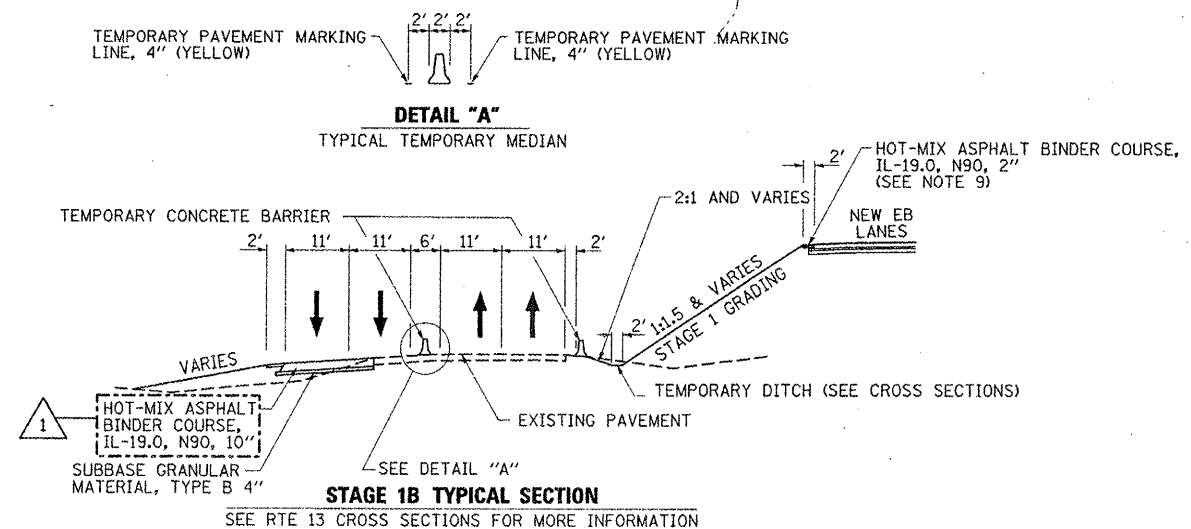
LEGEND

- WORK ZONE (STAGE AS SPECIFIED)
- TEMPORARY PAVEMENT
- COMPLETED TEMPORARY PAVEMENT
- TEMPORARY RAMP
- COMPLETED TEMPORARY RAMP
- COMPLETED PAVEMENT



**STAGE 1B
ILLINOIS RTE. 13**

- NOTES:
1. ADDITIONAL TRAFFIC CONTROL DEVICES MAY BE NECESSARY AS DIRECTED BY THE ENGINEER.
 2. TRAFFIC CONTROL FOR THIS WORK SHALL BE PAID FOR AS TRAFFIC CONTROL AND PROTECTION, (SPECIAL), LUMP SUM.
 3. PLACE TEMPORARY TRAFFIC BARRIER, IMPACT ATTENUATORS AND TRAFFIC CONTROL DEVICES AS SHOWN FOR STAGE 1B.
 4. ILLINOIS ROUTE 13 EB AND WB TRAFFIC TO USE EXISTING WB LANES AND TEMPORARY PAVEMENT.
 5. BEGIN CONSTRUCTION OF THE ILLINOIS ROUTE 13 EB DRAINAGE, EMBANKMENT, PAVEMENT, MSE WALLS, BRIDGES AND ASSOCIATED IMPROVEMENTS IN THE WORK ZONES SHOWN.
 6. BEGIN CONSTRUCTION OF THE FRONTAGE ROAD IMPROVEMENTS FROM STA. 471+74.29 TO STA. 476+65.
 7. EXISTING PAVEMENT MARKINGS SHALL BE REMOVED AND APPROPRIATE TEMPORARY PAVEMENT MARKINGS SHALL BE INSTALLED AS SHOWN ON THE MOT SHEETS.
 8. THE CONTRACTOR WILL BE ALLOWED TO USE THE EXISTING EB LANE RAILROAD CROSSING FOR CONSTRUCTION ACCESS DURING THIS STAGE. A RAILROAD FLAGGER WILL BE REQUIRED.
 9. A 2' WIDE 2" THICK STRIP OF HOT-MIX ASPHALT BINDER COURSE, IL-19.0, N90 PAVEMENT SHALL BE PLACED ON THE MEDIAN SIDE OF THE EB LANES PRIOR TO SWITCHING TO STAGE 2 TO SERVE AS THE PAD TO PLACE AND PIN THE TEMPORARY CONCRETE BARRIER. THE LIMITS OF THE TEMPORARY PAVEMENT STRIP INCLUDES ALL LOCATIONS WHERE THE TEMPORARY CONCRETE BARRIER AND ATTENUATORS ARE OUTSIDE THE LIMITS OF THE PROPOSED PAVEMENT AND SHOULDERS.



REVISION
REVISED 2/24/12

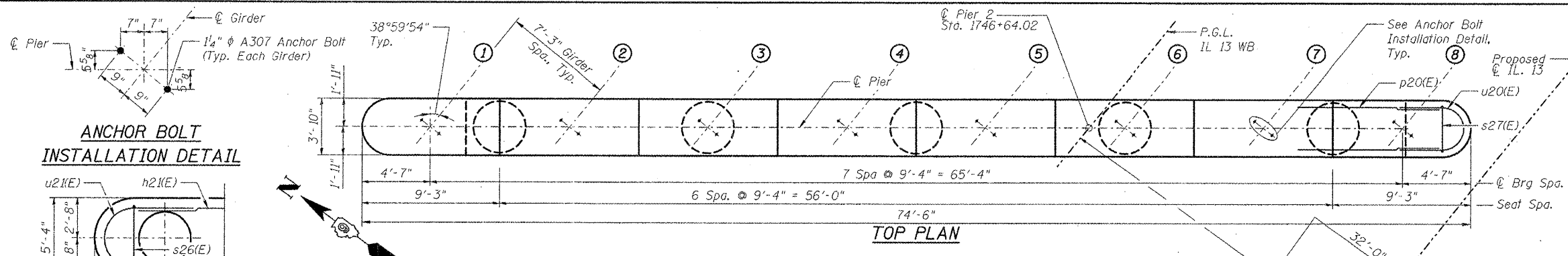
FILE NAME =	USER NAME = OpenH&B Springfield	DESIGNED - KPF	REVISED - 2/21/2012 BMB
Plot Scale = 200.0000' / IN.	Drawn - TAP	Checked - SPH	Revised -
Plot Date = 2/23/2012	Date - 12/9/11	Revised -	Revised -

**STATE OF ILLINOIS
DEPARTMENT OF TRANSPORTATION**

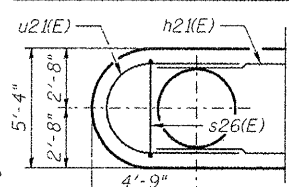
**STAGE 1B CONSTRUCTION
OVERALL TRAFFIC CONTROL PLAN**

SCALE: 1" = 200' SHEET NO. OF SHEETS STA. 1720+00.00 TO STA. 1780+00.00

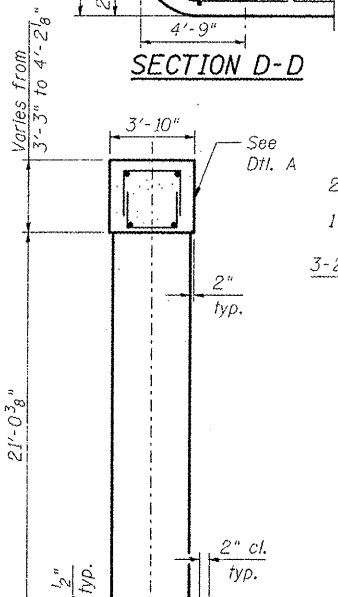
F.A. RTE.	SECTION	COUNTY	TOTAL SHEETS	SHEET NO.
331	(1X-1) VB-1, B-1, N-4, R-3	WILLIAMSON	367	71
			CONTRACT NO. 98859	
ILLINOIS FED. AID PROJECT				



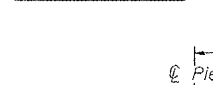
ANCHOR BOLT INSTALLATION DETAIL



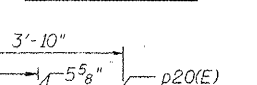
SECTION D-D



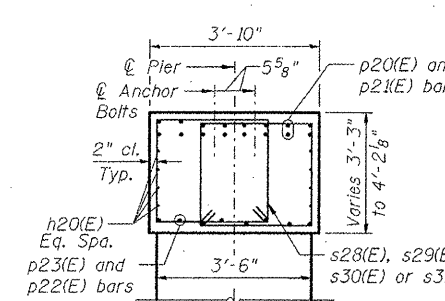
SECTION A-A



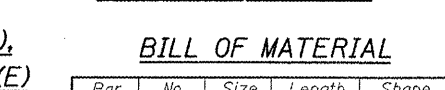
SECTION B-B



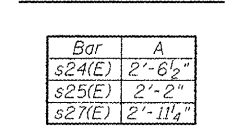
DETAIL A (CANTILEVER ENDS)



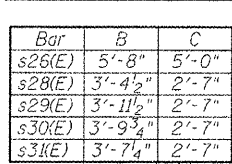
DETAIL A' (MIDSPAN)



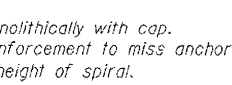
BARS s24(E), s25(E) & s27(E)



BARS s26(E) & s28(E) thru s31(E)



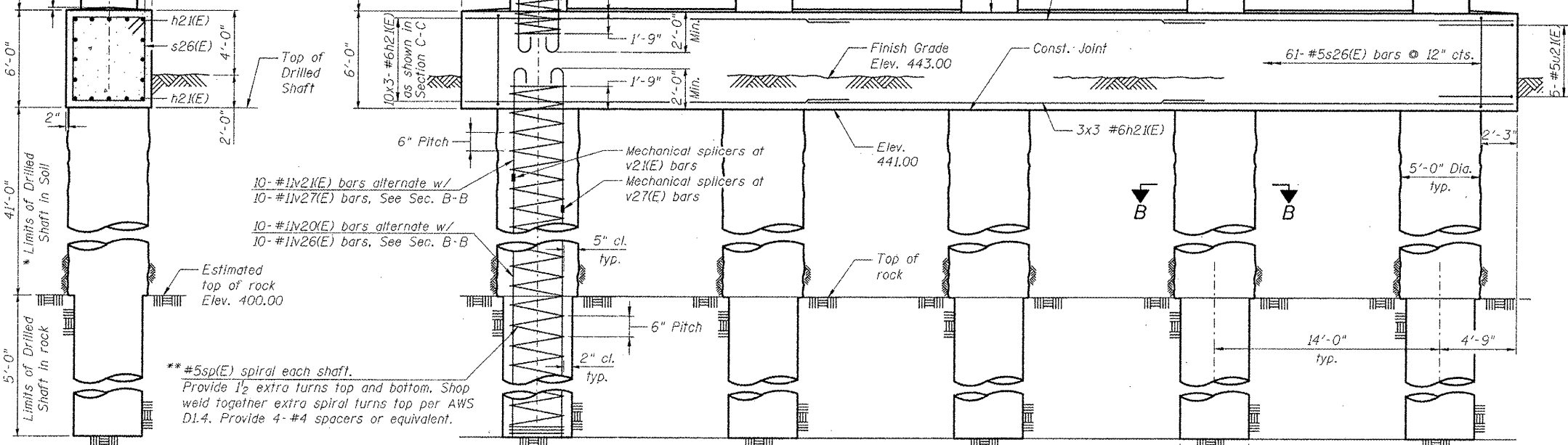
MINIMUM BAR LAP



BILL OF MATERIAL

Bar	No.	Size	Length	Shape
h20(E)	24	#5	25'-9"	
h21(E)	48	#6	22'-8"	
p20(E)	32	#8	31'-9"	
s24(E)	16	#8	20'-9"	
p22(E)	8	#7	33'-2"	
p23(E)	16	#7	24'-0"	
p24(E)	4	#5	12'-7"	
p27(E)	4	#5	11'-5"	
p28(E)	4	#5	16'-0"	
s24(E)	32	#5	7'-8"	
s25(E)	12	#5	6'-11"	
s26(E)	61	#5	22'-3"	
s27(E)	44	#5	8'-6"	
s28(E)	28	#5	12'-10"	
s29(E)	58	#5	14'-0"	
s30(E)	22	#5	13'-9"	
s31(E)	16	#5	13'-4"	
sp1(E)	5	#5	47'-9"	
sp1(E)	5	#5	24'-7"	
u20(E)	7	#5	11'-10"	
u21(E)	10	#5	15'-4"	
v20(E)	50	#11	24'-0"	
v21(E)	50	#11	25'-7"	
v23(E)	100	#11	28'-3"	
v26(E)	50	#11	21'-0"	
v27(E)	50	#11	28'-7"	
Structure Excavation		Cu. Yd.	48.0	
Concrete Structures		Cu. Yd.	321.1	
Reinforcement Bars, Epoxy Coated		Pound	53,900	
Mechanical Splicers		Each	100	
Drilled Shaft in Soil		Cu. Yd.	149.1	
Drilled Shaft in Rock		Cu. Yd.	14.7	

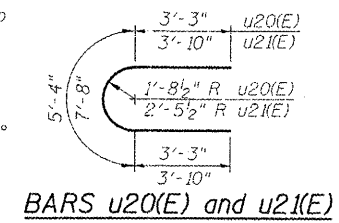
SECTION C-C



* The quantities and reinforcement detailing are based on the top of shaft and the estimated top of rock elevations shown and may change based on the actual top of rock encountered at each shaft and the final top of shaft elevation.

** Allowable substitution: Provide 1/2 extra turns top and bottom with 135° standard hook into core at ends of spiral.

*** Splicing of reinforcement will not be allowed in this region.

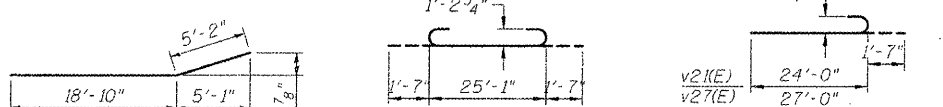


BAR p23(E)

BAR v23(E)

BARS v21(E) and v27(E)

ELEVATION (Looking East)



FILE NAME: I:\victor\986663\p2\p2\cadd\shasta\structural\plans\pier 2.r BRIDGE.dgn

CMT
CRAWFORD MURPHY & TILLY, INC.
CONSULTING ENGINEERS
SPRINGFIELD, IL ■ AURORA, IL ■ ST. LOUIS, MO
ROCKFORD, IL ■ PEORIA, IL ■ CHICAGO, IL

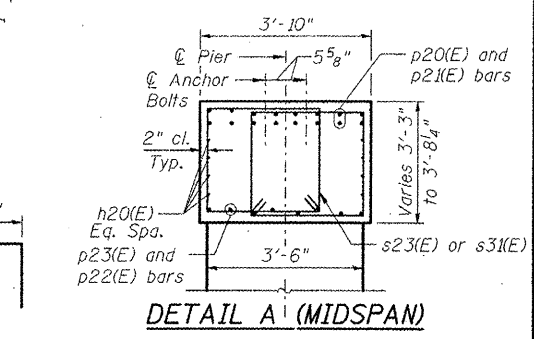
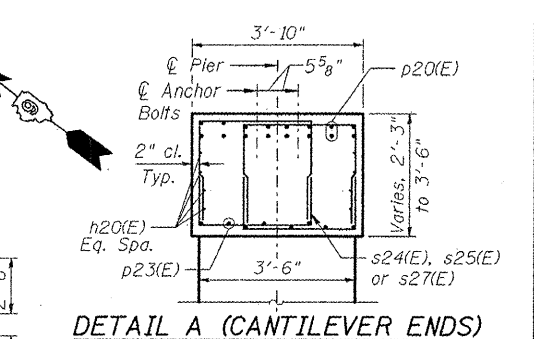
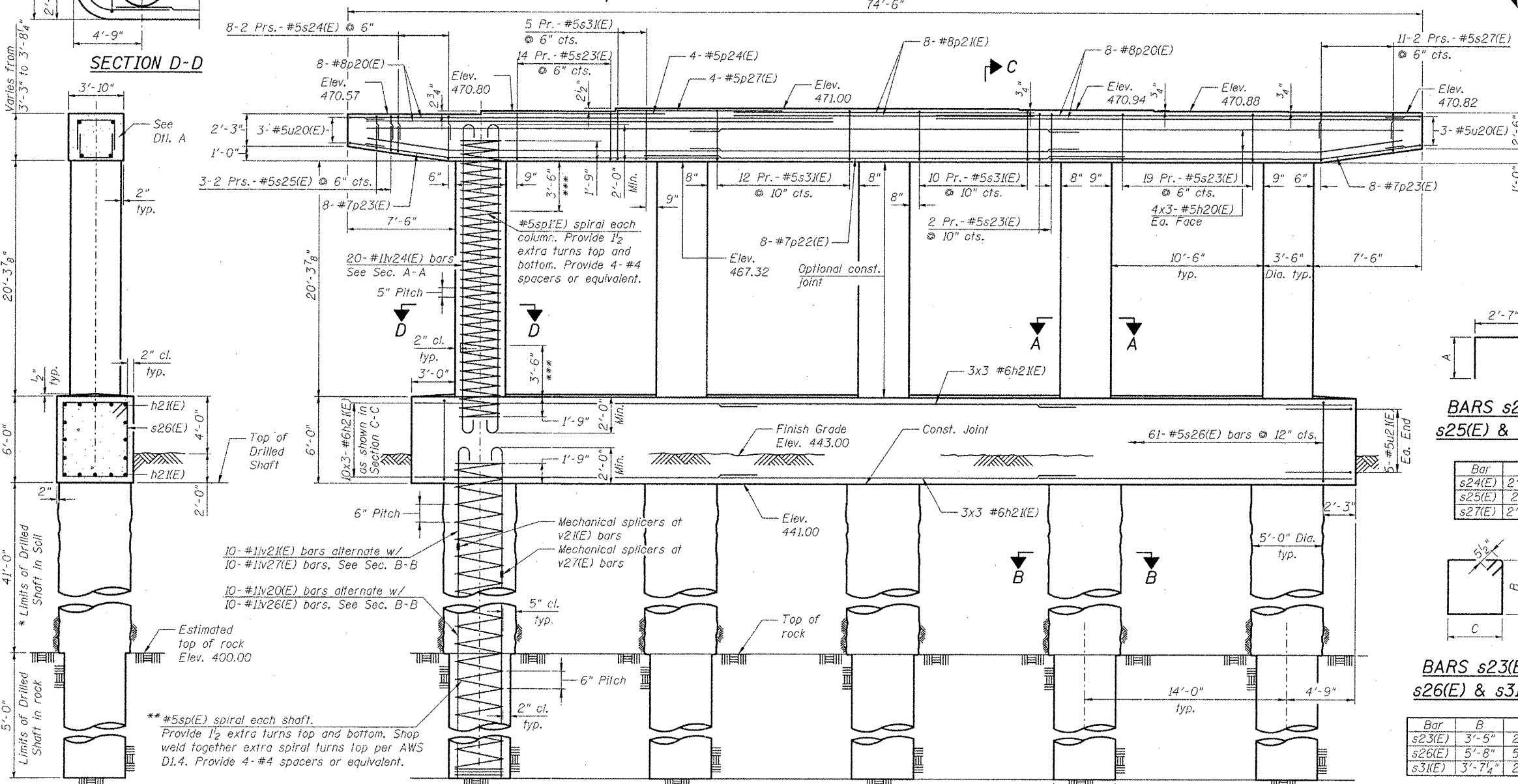
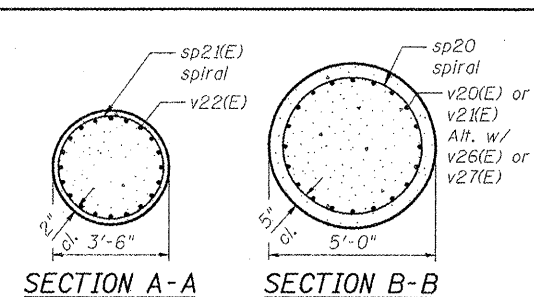
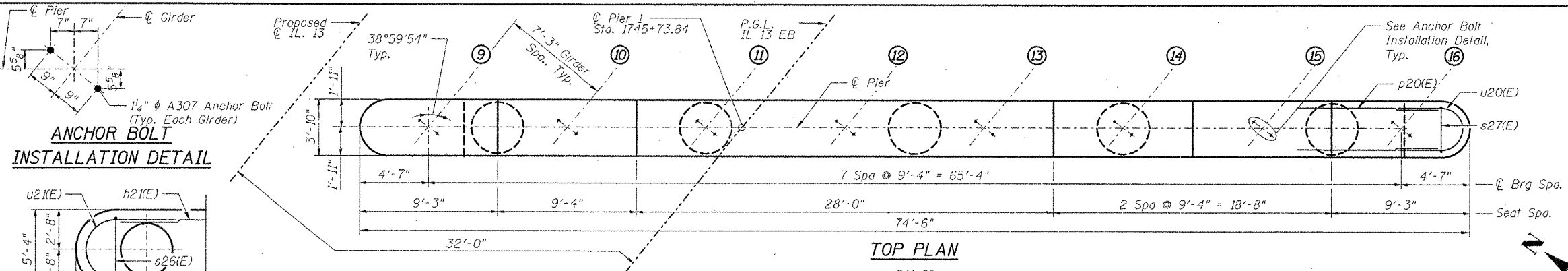
USER NAME = Gary Davis	DESIGNED - MCC	REVISED -	REVISED -
PLOT SCALE =	CHECKED - ATI	REVISED -	REVISED -
PLOT DATE = 1/31/2012	DRAWN - GLD	REVISED - 2/24/12	REVISED -
	CHECKED - ATI	REVISED -	REVISED -

**STATE OF ILLINOIS
DEPARTMENT OF TRANSPORTATION**

**PIER 2 DETAILS
STRUCTURE NO. 100-0093 (W.B.)**

SHEET NO. 5-310F 5-41 SHEETS

F.A.P. RTE.	SECTION	COUNTY	TOTAL SHEETS	SHEET NO.
331	(1X-1VB-1	WILLIAMSON	367	197
			CONTRACT NO. 98859	
ILLINOIS FED. AID PROJECT				



BARS s24(E), s25(E) & s27(E)

Bar	A
s24(E)	2'-6 1/2"
s25(E)	2'-2"
s27(E)	2'-11 1/4"

BARS s23(E), s26(E) & s3(E)

Bar	B	C
s23(E)	3'-5"	2'-7"
s26(E)	5'-8"	5'-0"
s3(E)	3'-7 1/4"	2'-7"

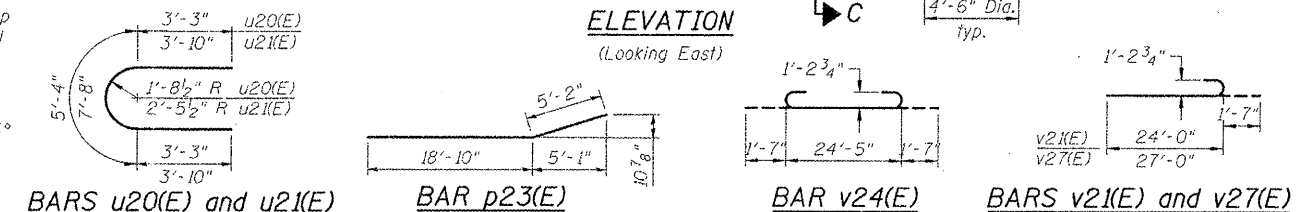
BILL OF MATERIAL

Bar	No.	Size	Length	Shape
h20(E)	24	#5	25'-9"	
h21(E)	48	#6	22'-8"	
h22(E)	32	#8	31'-9"	
p21(E)	16	#8	20'-9"	
p22(E)	8	#7	33'-2"	
p23(E)	16	#7	24'-0"	
p24(E)	4	#5	12'-7"	
p27(E)	4	#5	11'-5"	
s23(E)	70	#5	12'-11"	
s24(E)	32	#5	7'-8"	
s25(E)	12	#5	6'-11"	
s26(E)	61	#5	22'-3"	
s27(E)	44	#5	8'-6"	
s3(E)	54	#5	13'-4"	
sp(E)	5	#5	47'-9"	
sp1(E)	5	#5	23'-11"	
u20(E)	6	#5	11'-10"	
u21(E)	10	#5	15'-4"	
v20(E)	50	#11	24'-0"	
v21(E)	50	#11	25'-7"	
v24(E)	100	#11	27'-7"	
v26(E)	50	#11	21'-0"	
v27(E)	50	#11	28'-7"	
Structure Excavation		Cu. Yd.	48.0	
Concrete Structures		Cu. Yd.	317.1	
Reinforcement Bars, Epoxy Coated		Pound	53,410	
Mechanical Splicers		Each	100	
Drilled Shaft in Soil		Cu. Yd.	149.1	
Drilled Shaft in Rock		Cu. Yd.	14.7	

MINIMUM BAR LAP

- #5(E) Bar = 3'-3"
- #6(E) Bar = 3'-10"
- #7(E) Bar = 5'-2"
- #8(E) Bar = 6'-9"

Cast steps monolithically with cap. Space cap reinforcement to miss anchor bolts. ** Length is height of spiral.



SECTION C-C

* The quantities and reinforcement detailing are based on the top of shaft and the estimated top of rock elevations shown and may change based on the actual top of rock encountered at each shaft and the final top of shaft elevation.

** Allowable substitution: Provide 1/2 extra turns top and bottom with 135° standard hook into core at ends of spiral.

*** Splicing of reinforcement will not be allowed in this region.

FILE NAME: I:\victoria\98859\32of54\cadd\structure\pier1\pier1_s_bridge.pier1_s_bridge.dgn

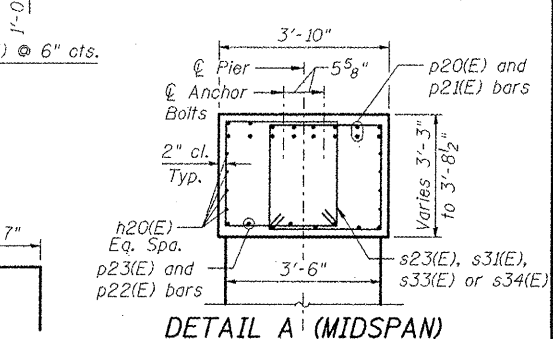
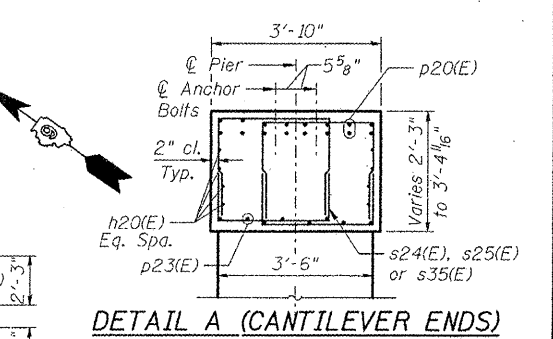
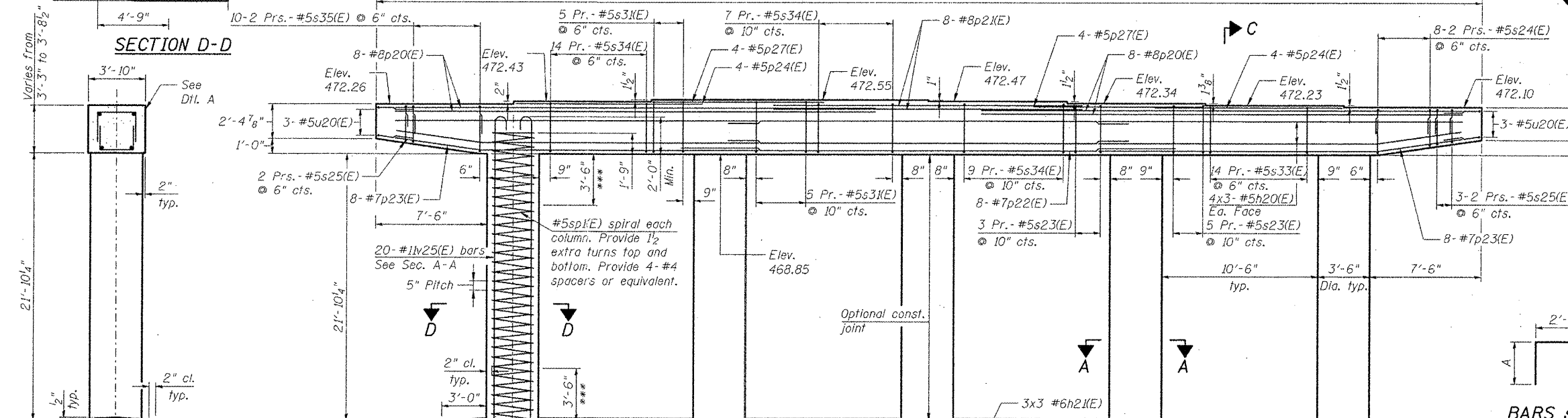
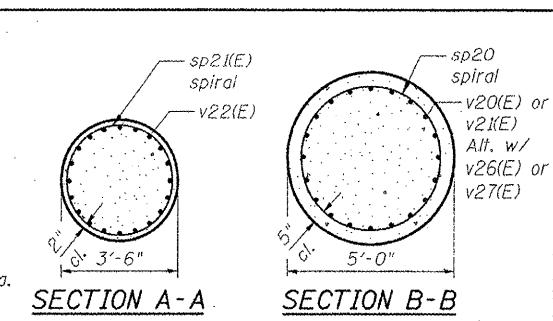
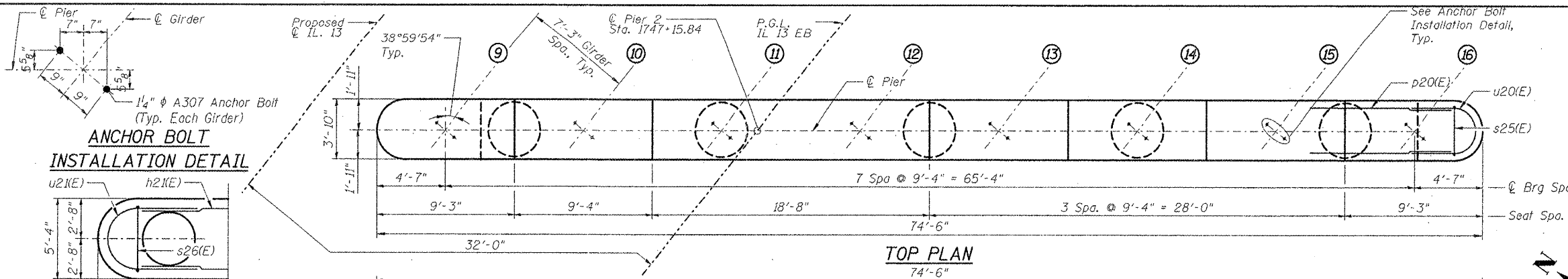
CMT
CRAWFORD MURPHY & TILLY, INC.
CONSULTING ENGINEERS
SPRINGFIELD, IL ■ ALTOONA, IL ■ ST. LOUIS, MO
ROCKFORD, IL ■ PEORIA, IL ■ CHICAGO, IL

USER NAME	Gary Davis
DESIGNED	MCC
CHECKED	ATI
DRAWN	GLD
PLOT DATE	1/31/2012
REVISED	REVISOR
REVISION	2/24/12

STATE OF ILLINOIS
DEPARTMENT OF TRANSPORTATION

PIER 1 DETAILS
STRUCTURE NO. 100-0094 (E.B.)

F.A.P. RTE.	SECTION	COUNTY	TOTAL SHEETS	SHEET NO.
331	11X-11VB-1	WILLIAMSON	367	198
			CONTRACT NO.	98859
ILLINOIS FED. AID PROJECT				



BARS s24(E), s25(E) & s35(E)

Bar	A
s24(E)	2'-6 1/2"
s25(E)	2'-2"
s35(E)	2'-8"

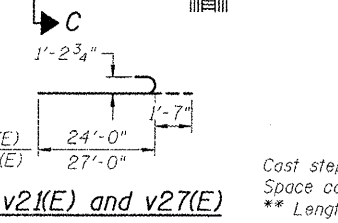
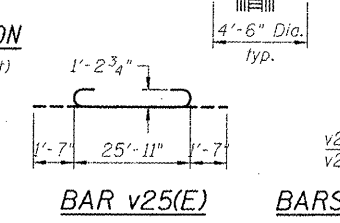
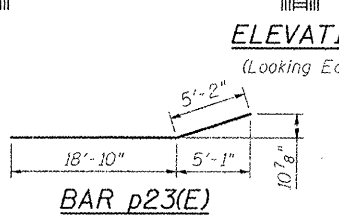
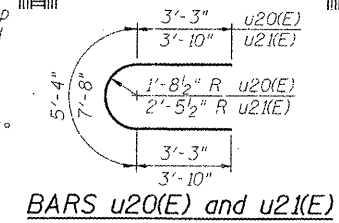
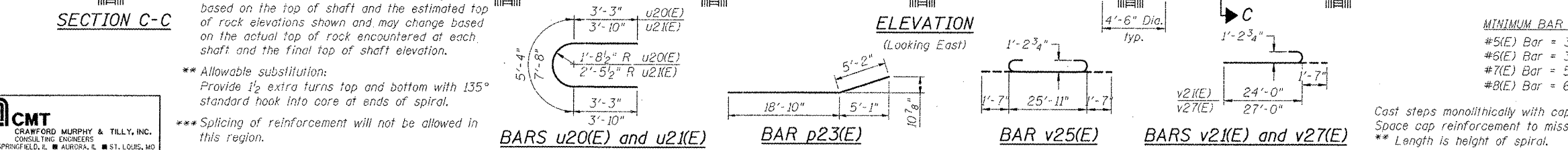
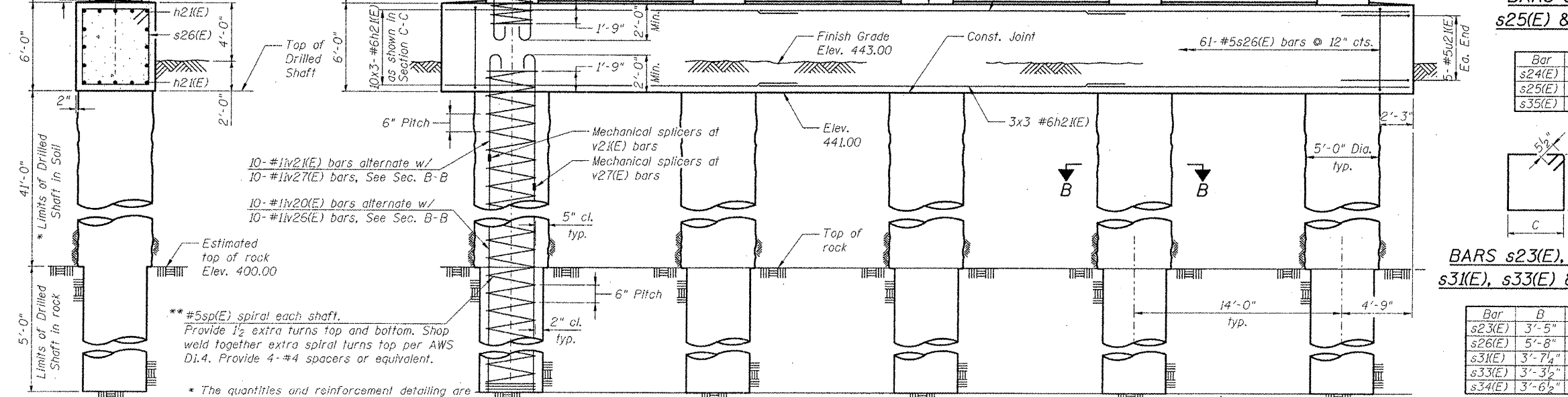
BARS s23(E), s26(E), s31(E), s33(E) & s34(E)

Bar	B	C
s23(E)	3'-5"	2'-7"
s26(E)	5'-8"	5'-0"
s31(E)	3'-7 1/4"	2'-7"
s33(E)	3'-3 1/2"	2'-7"
s34(E)	3'-6 1/2"	2'-7"

MINIMUM BAR LAP
 #5(E) Bar = 3'-3"
 #6(E) Bar = 3'-10"
 #7(E) Bar = 5'-2"
 #8(E) Bar = 6'-9"

BILL OF MATERIAL

Bar	No.	Size	Length	Shape
h20(E)	24	#5	25'-9"	
h21(E)	48	#6	22'-8"	
p20(E)	32	#8	31'-9"	
p21(E)	16	#8	20'-9"	
p22(E)	8	#7	33'-2"	
p23(E)	16	#7	24'-0"	
p24(E)	8	#5	12'-7"	
p27(E)	8	#5	11'-5"	
s23(E)	16	#5	12'-11"	
s24(E)	32	#5	7'-8"	
s25(E)	16	#5	6'-11"	
s26(E)	61	#5	22'-3"	
s31(E)	20	#5	13'-4"	
s33(E)	28	#5	12'-8"	
s34(E)	60	#5	13'-2"	
s35(E)	40	#5	7'-11"	
sp(E)	5	#5	47'-9"	
u20(E)	6	#5	25'-5"	
u21(E)	10	#5	11'-10"	
u22(E)	10	#5	15'-4"	
v20(E)	50	#11	24'-0"	
v21(E)	50	#11	25'-7"	
v25(E)	100	#11	29'-1"	
v26(E)	50	#11	21'-0"	
v27(E)	50	#11	28'-7"	
Structure Excavation		Cu. Yd.	48.0	
Concrete Structures		Cu. Yd.	319.3	
Reinforcement Bars, Epoxy Coated		Pound	54,250	
Mechanical Splicers		Each	100	
Drilled Shaft in Soil		Cu. Yd.	149.1	
Drilled Shaft in Rock		Cu. Yd.	14.7	



Cast steps monolithically with cap.
 Space cap reinforcement to miss anchor bolts.
 ** Length is height of spiral.

FILE NAME = I:\Vob\090803\dr\an\con\sh\struct\plans\pier 2.s BRIDGE.dgn

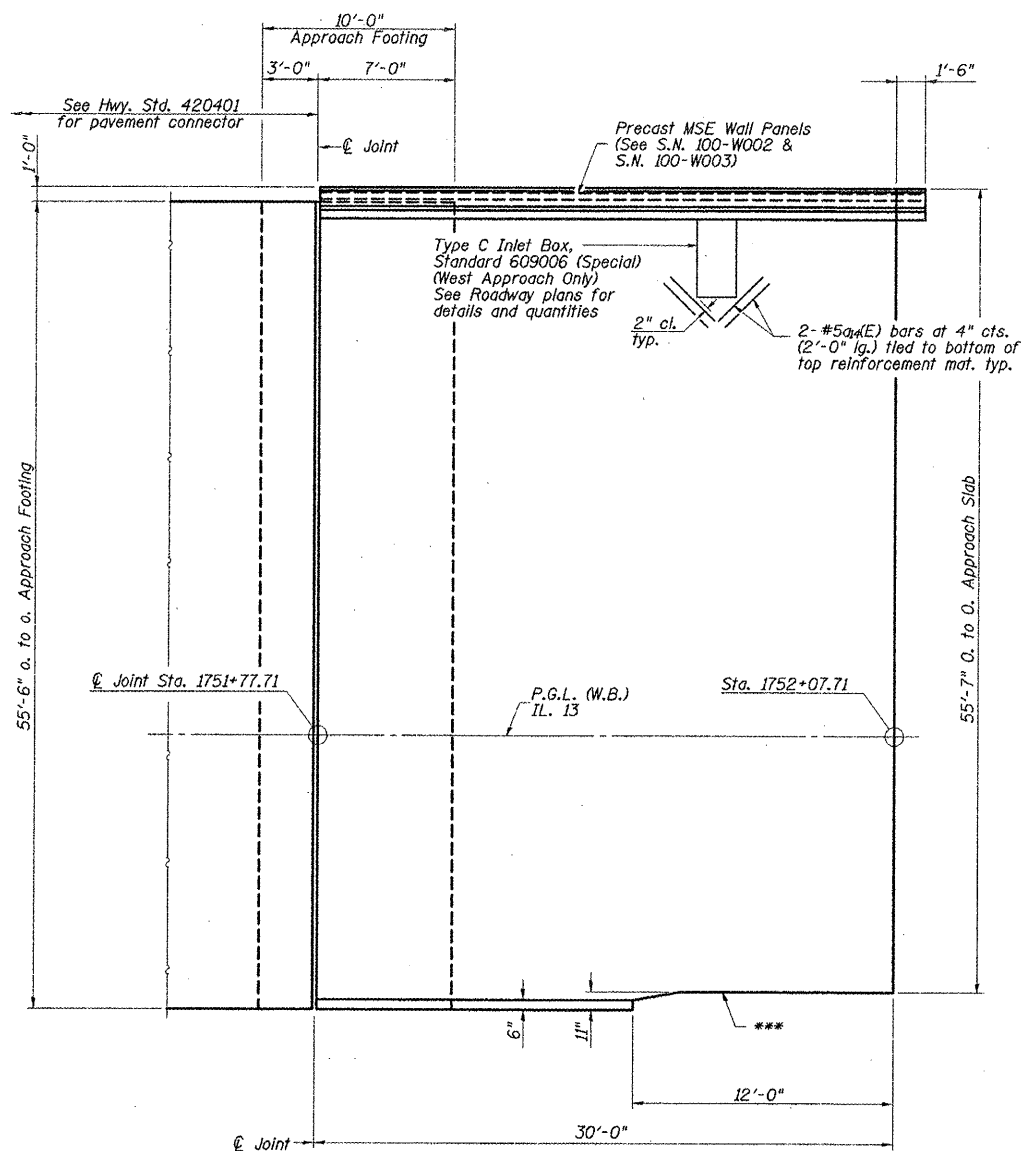
CMT
 CRAWFORD MURPHY & TILLY, INC.
 CONSULTING ENGINEERS
 SPRINGFIELD, IL ■ ALBANY, IL ■ ST. LOUIS, MO
 ROCKFORD, IL ■ PEORIA, IL ■ CHICAGO, IL

USER NAME = Gary Davis	DESIGNED - MCC	REVISED -
	CHECKED - ATI	REVISED -
PLOT SCALE =	DRAWN - GLD	REVISED - 2/24/12
PLOT DATE = 1/31/2012	CHECKED - ATI	REVISED -

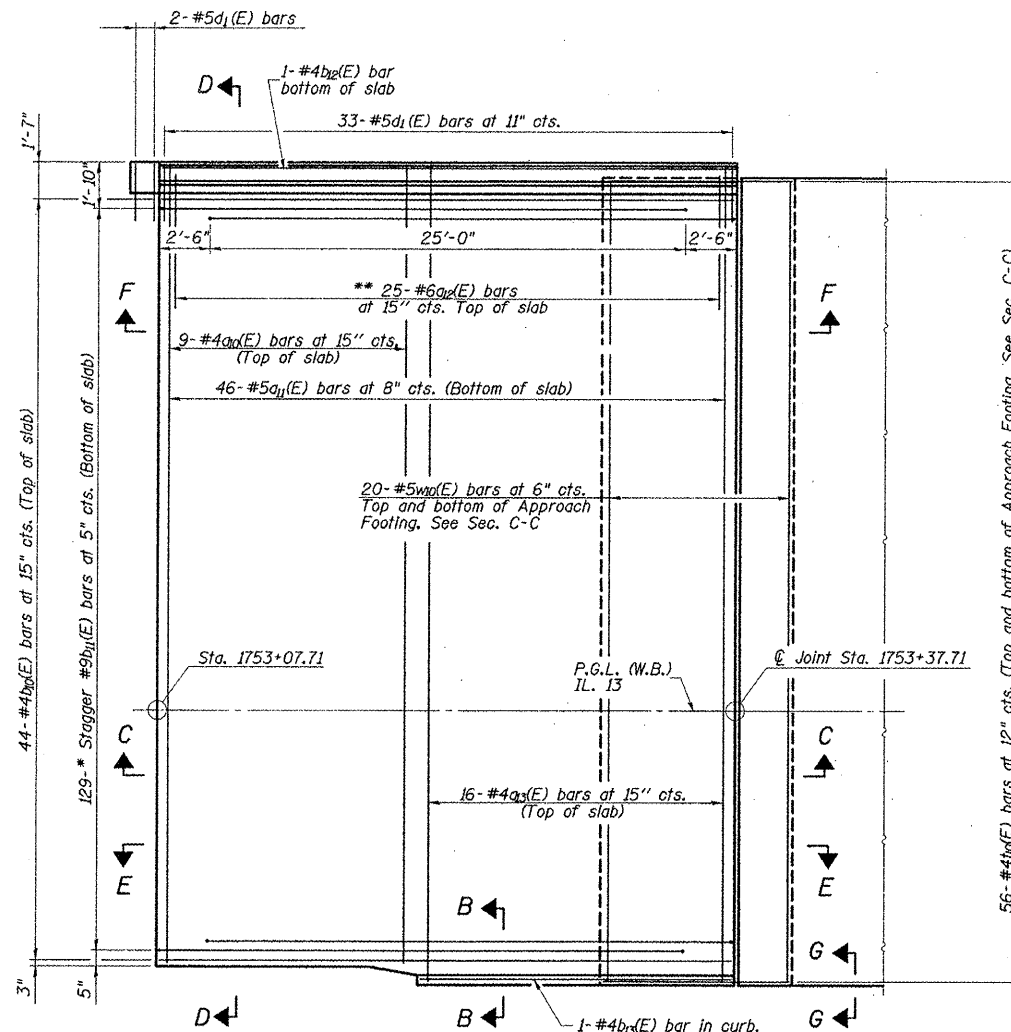
**STATE OF ILLINOIS
 DEPARTMENT OF TRANSPORTATION**

**PIER 2 DETAILS
 STRUCTURE NO. 100-0094 (E.B.)**

F.A.P. RTE.	SECTION	COUNTY	TOTAL SHEETS	SHEET NO.
331	(IX)-11VB-1	WILLIAMSON	367	199
			CONTRACT NO.	98859
ILLINOIS FED. AID PROJECT				



WEST APPROACH
Showing Dimensions
(East Approach Similar)

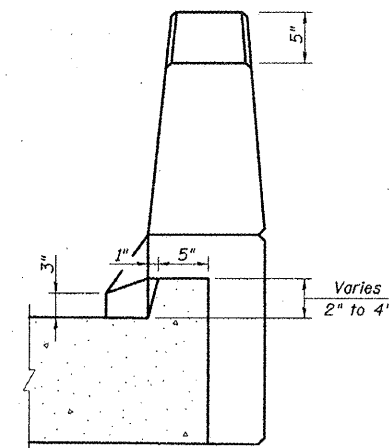


EAST APPROACH
Showing Reinforcement
(West Approach Similar)

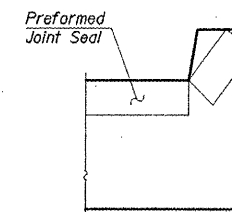
PLAN

(S.N. 100-0095 shown)
(S.N. 100-0096 similar)

- * Tilt #9b₁(E) bars as required to maintain clearance.
- ** Space between a(E) bars, typ. ea. parapet.
- *** Preformed Flexible Foam Expansion Joint Filler according to Article 1051.09 of the Std. Specifications: full depth of slab, full length of parapet.

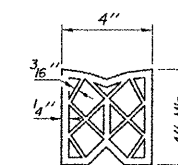


VIEW B-B

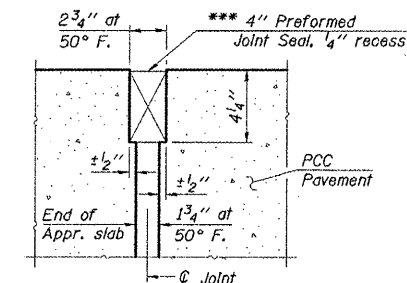


VIEW G-G

Angle Preformed Joint Seal at 45° at curbs when req'd for drainage.



PREFORMED JOINT SEAL



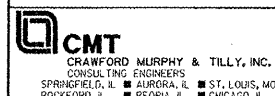
RIGID PAVEMENT

DETAIL A

*** Cost included with Concrete Superstructure.

NOTES:

1. See sheet 16 of 32 for Sections C-C & D-D and Views E-E & F-F.
2. Order a₁(E), a₂(E), b₁(E), and b₂(E) bars full length. Cut in the field to fit Type C Inlet Box, Standard 609006 (Special).



FILE NAME =
L:\1001\090683\10-CADD\Sheets\STRUC

USER NAME =
DESIGNED - SF
CHECKED - GLD
DRAWN - GLD
PLOT DATE =

DESIGNED - SF
CHECKED - GLD
DRAWN - GLD
PLOT DATE =

REVISIONS:
1. REVISED SHEET
2. 2/24/12

**STATE OF ILLINOIS
DEPARTMENT OF TRANSPORTATION**

**APPROACH SLAB DETAILS 1
STRUCTURE NO. 100-0095 (W.B.) & 100-0096 (E.B.)**

SHEET NO. 15 OF 32 SHEETS

F.A.P. RTE.	SECTION	COUNTY	TOTAL SHEETS	SHEET NO.
331	(1X-1) VB-1, B-1, N-4, R-3	WILLIAMSON	367	222
			CONTRACT NO. 98859	

ILLINOIS FED. AID PROJECT