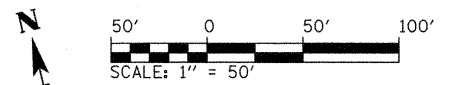
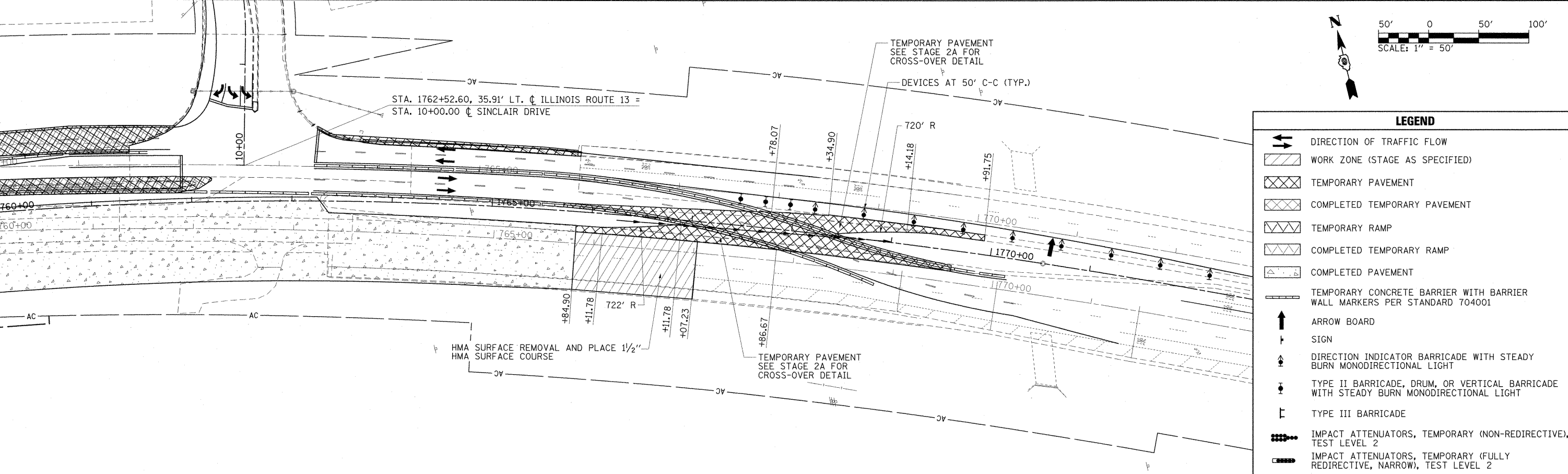


- NOTES:
1. ADDITIONAL TRAFFIC CONTROL DEVICES MAY BE NECESSARY AS DIRECTED BY THE ENGINEER.
 2. TRAFFIC CONTROL FOR THIS WORK SHALL BE PAID FOR AS TRAFFIC CONTROL AND PROTECTION (SPECIAL), LUMP SUM.
 3. IL ROUTE 13 AND FRONTAGE ROAD TRAFFIC REMAINS THE SAME AS STAGE 1B. WORK SHOWN IN STAGE 1B SHALL BE COMPLETED.
 4. HMA SURFACE REMOVAL, 1 1/2" HMA SURFACE COURSE, AND TEMPORARY PAVEMENT SHALL BE CONSTRUCTED AS SHOWN.
 5. WHEN LANE CLOSURES ARE NEEDED, SET UP TRAFFIC CONTROL DEVICES IN ACCORDANCE TO STD. 701601.
 6. WORK REQUIRING A LANE CLOSURE SHALL BE COMPLETED DURING OFF-PEAK HOURS, LANE CLOSURES DURING PEAK HOURS WILL NOT BE ALLOWED.



LEGEND	
	DIRECTION OF TRAFFIC FLOW
	WORK ZONE (STAGE AS SPECIFIED)
	TEMPORARY PAVEMENT
	COMPLETED TEMPORARY PAVEMENT
	TEMPORARY RAMP
	COMPLETED TEMPORARY RAMP
	COMPLETED PAVEMENT
	TEMPORARY CONCRETE BARRIER WITH BARRIER WALL MARKERS PER STANDARD 704001
	ARROW BOARD
	SIGN
	DIRECTION INDICATOR BARRICADE WITH STEADY BURN MONODIRECTIONAL LIGHT
	TYPE II BARRICADE, DRUM, OR VERTICAL BARRICADE WITH STEADY BURN MONODIRECTIONAL LIGHT
	TYPE III BARRICADE
	IMPACT ATTENUATORS, TEMPORARY (NON-REDIRECTIVE), TEST LEVEL 2
	IMPACT ATTENUATORS, TEMPORARY (FULLY REDIRECTIVE, NARROW), TEST LEVEL 2

FILE NAME = 1:\dot\0906683\draw\CADD_Sheets\099885\sh-mot-stage1f-crossover.dgn	USER NAME = OpenH&B Springfield	DESIGNED - KPF	REVISED -	STATE OF ILLINOIS DEPARTMENT OF TRANSPORTATION	MAINTENANCE OF TRAFFIC PLAN STAGE 1F - EAST AND WEST CROSSOVERS	F.A. RTE. 331	SECTION (1X-1) VB-1, B-1, N-4, R-3	COUNTY WILLIAMSON	TOTAL SHEETS 367	SHEET NO. 81	
PLOT SCALE = 50.0000' / IN.	CHECKED - SPH	REVISED -	SCALE: 1"=50'			SHEET NO. OF SHEETS	STA. TO STA.	ILLINOIS FED. AID PROJECT			
PLOT DATE = 12/14/2011	DATE - 12/9/11	REVISED -									