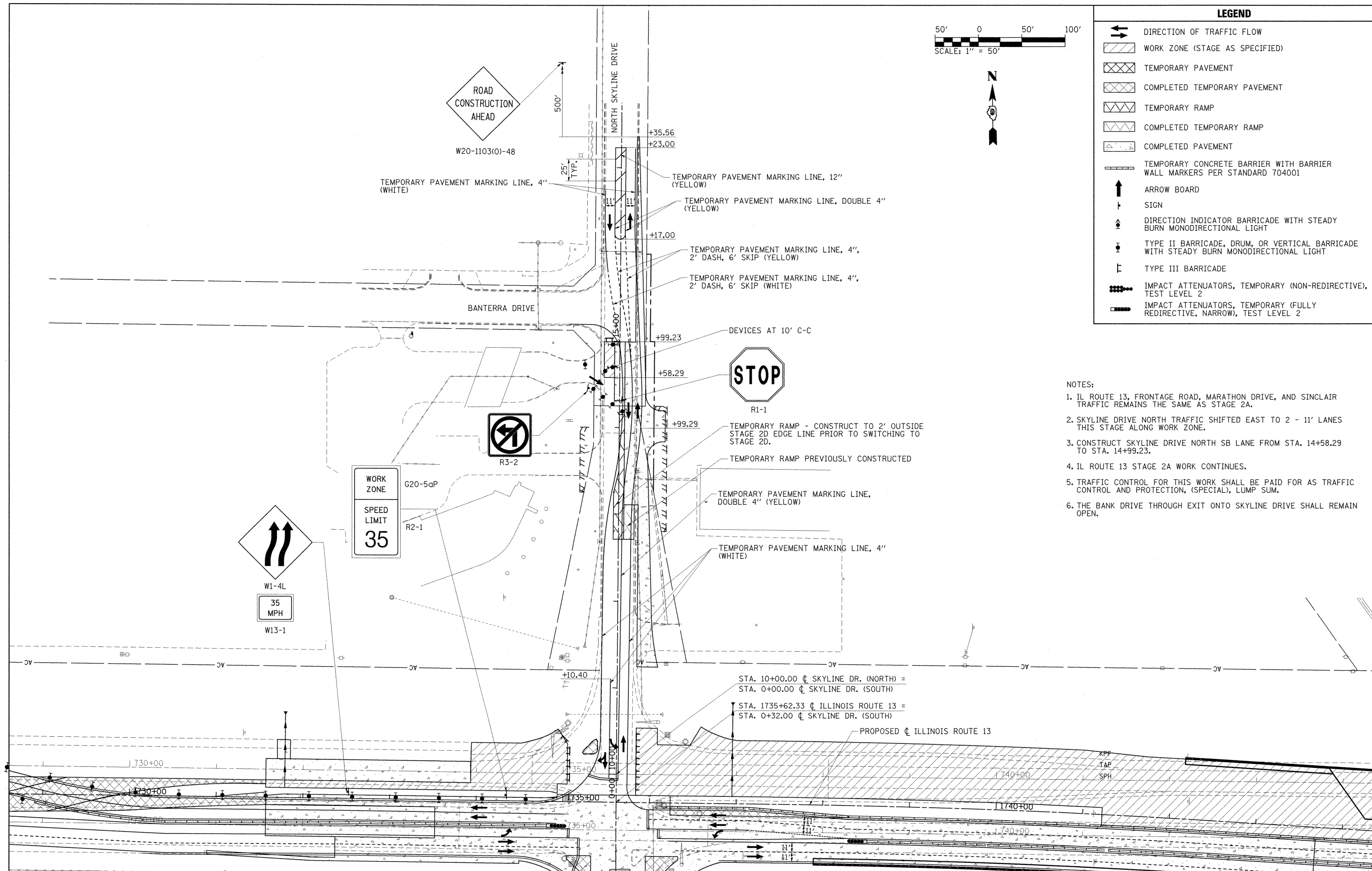


LEGEND

- DIRECTION OF TRAFFIC FLOW
- WORK ZONE (STAGE AS SPECIFIED)
- TEMPORARY PAVEMENT
- COMPLETED TEMPORARY PAVEMENT
- TEMPORARY RAMP
- COMPLETED TEMPORARY RAMP
- COMPLETED PAVEMENT
- TEMPORARY CONCRETE BARRIER WITH BARRIER WALL MARKERS PER STANDARD 704001
- ARROW BOARD
- SIGN
- DIRECTION INDICATOR BARRICADE WITH STEADY BURN MONODIRECTIONAL LIGHT
- TYPE II BARRICADE, DRUM, OR VERTICAL BARRICADE WITH STEADY BURN MONODIRECTIONAL LIGHT
- TYPE III BARRICADE
- IMPACT ATTENUATORS, TEMPORARY (NON-REDIRECTIVE), TEST LEVEL 2
- IMPACT ATTENUATORS, TEMPORARY (FULLY REDIRECTIVE, NARROW), TEST LEVEL 2

- NOTES:
1. IL ROUTE 13, FRONTAGE ROAD, MARATHON DRIVE, AND SINCLAIR TRAFFIC REMAINS THE SAME AS STAGE 2A.
 2. SKYLINE DRIVE NORTH TRAFFIC SHIFTED EAST TO 2 - 11' LANES THIS STAGE ALONG WORK ZONE.
 3. CONSTRUCT SKYLINE DRIVE NORTH SB LANE FROM STA. 14+58.29 TO STA. 14+99.23.
 4. IL ROUTE 13 STAGE 2A WORK CONTINUES.
 5. TRAFFIC CONTROL FOR THIS WORK SHALL BE PAID FOR AS TRAFFIC CONTROL AND PROTECTION, (SPECIAL), LUMP SUM.
 6. THE BANK DRIVE THROUGH EXIT ONTO SKYLINE DRIVE SHALL REMAIN OPEN.



| | | | | | | | | | | | |
|--|---------------------------------|----------------|-----------|---|---|--------------------|------------------------------------|-------------------|---------------------------|--------------|--|
| FILE NAME = | USER NAME = OpenH&B Springfield | DESIGNED - KPF | REVISED - | STATE OF ILLINOIS DEPARTMENT OF TRANSPORTATION | MAINTENANCE OF TRAFFIC PLAN STAGE 2D | F.A. RTE. 331 | SECTION (1X-1) VB-1, B-1, N-4, R-3 | COUNTY WILLIAMSON | TOTAL SHEETS 367 | SHEET NO. 90 | |
| 1:\dot\0906603\draw\CADD_Sheets\098859-sht-mot-stage2d-2.dgn | PLOT SCALE = 50.0000' / IN. | DRAWN - TAP | REVISED - | | | CONTRACT NO. 98859 | | | | | |
| | PLOT DATE = 12/14/2011 | CHECKED - SPH | REVISED - | | | | | | | | |
| | | DATE - 12/9/11 | REVISED - | | | | | | | | |
| | | | | | | SCALE: 1"=50' | SHEET NO. OF SHEETS | STA. TO STA. | ILLINOIS FED. AID PROJECT | | |