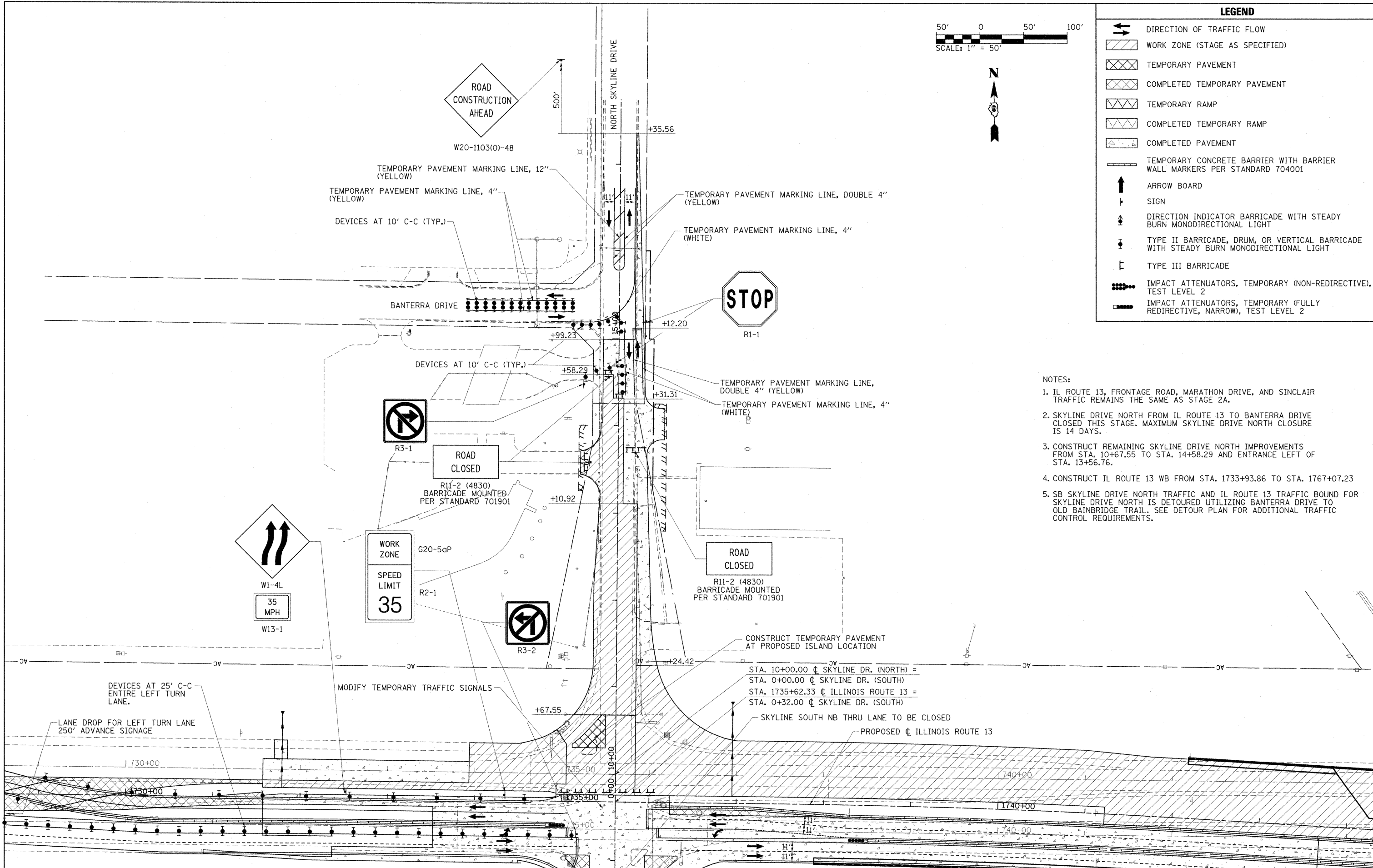


LEGEND

- DIRECTION OF TRAFFIC FLOW
- WORK ZONE (STAGE AS SPECIFIED)
- TEMPORARY PAVEMENT
- COMPLETED TEMPORARY PAVEMENT
- TEMPORARY RAMP
- COMPLETED TEMPORARY RAMP
- COMPLETED PAVEMENT
- TEMPORARY CONCRETE BARRIER WITH BARRIER WALL MARKERS PER STANDARD 704001
- ARROW BOARD
- SIGN
- DIRECTION INDICATOR BARRICADE WITH STEADY BURN MONODIRECTIONAL LIGHT
- TYPE II BARRICADE, DRUM, OR VERTICAL BARRICADE WITH STEADY BURN MONODIRECTIONAL LIGHT
- TYPE III BARRICADE
- IMPACT ATTENUATORS, TEMPORARY (NON-REDIRECTIVE), TEST LEVEL 2
- IMPACT ATTENUATORS, TEMPORARY (FULLY REDIRECTIVE, NARROW), TEST LEVEL 2

NOTES:

1. IL ROUTE 13, FRONTAGE ROAD, MARATHON DRIVE, AND SINCLAIR TRAFFIC REMAINS THE SAME AS STAGE 2A.
2. SKYLINE DRIVE NORTH FROM IL ROUTE 13 TO BANTERRA DRIVE CLOSED THIS STAGE. MAXIMUM SKYLINE DRIVE NORTH CLOSURE IS 14 DAYS.
3. CONSTRUCT REMAINING SKYLINE DRIVE NORTH IMPROVEMENTS FROM STA. 10+67.55 TO STA. 14+58.29 AND ENTRANCE LEFT OF STA. 13+56.76.
4. CONSTRUCT IL ROUTE 13 WB FROM STA. 1733+93.86 TO STA. 1767+07.23
5. SB SKYLINE DRIVE NORTH TRAFFIC AND IL ROUTE 13 TRAFFIC BOUND FOR SKYLINE DRIVE NORTH IS DETOURED UTILIZING BANTERRA DRIVE TO OLD BAINBRIDGE TRAIL. SEE DETOUR PLAN FOR ADDITIONAL TRAFFIC CONTROL REQUIREMENTS.



FILE NAME =	USER NAME = OpenH&B Springfield	DESIGNED - KPF	REVISED -	STATE OF ILLINOIS DEPARTMENT OF TRANSPORTATION	MAINTENANCE OF TRAFFIC PLAN STAGE 2E				F.A. RTE.	SECTION	COUNTY	TOTAL SHEETS	SHEET NO.
1:\dot\0906603\draw\CA00.Sheets\099885	9-shr-mot-stage2e-2.dgn	DRAWN - TAP	REVISED -		331	(1X-1) VB-1, B-1, N-4, R-3	WILLIAMSON	367	91				
	PLOT SCALE = 50,0000 1/ IN.	CHECKED - SPH	REVISED -		CONTRACT NO. 98859								
	PLOT DATE = 12/14/2011	DATE - 12/9/11	REVISED -		ILLINOIS FED. AID PROJECT								