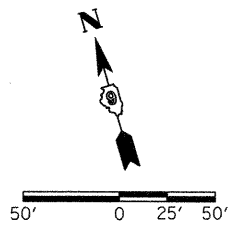


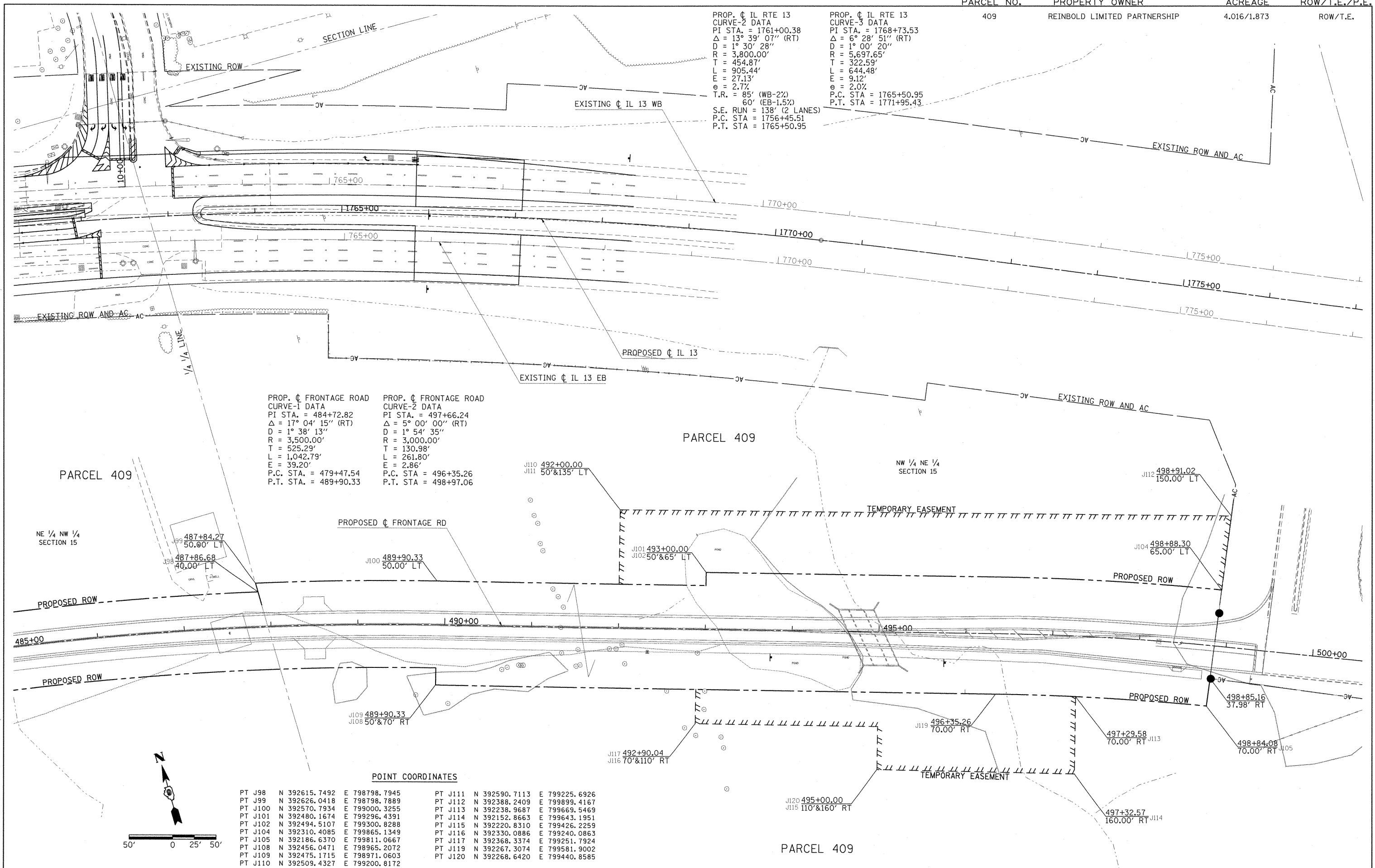
PARCEL NO. 409 PROPERTY OWNER REINBOLD LIMITED PARTNERSHIP ACREAGE 4.016/1.873 ROW/T.E./P.E. ROW/T.E.  
 PROP. C IL RTE 13 CURVE-2 DATA PI STA. = 1761+00.38 Δ = 13° 39' 07" (RT) D = 1° 30' 28" R = 3,800.00' T = 454.87' L = 905.44' E = 27.13' e = 2.7% T.R. = 85' (WB-2%) 60' (EB-1.5%) S.E. RUN = 138' (2 LANES) P.C. STA = 1756+45.51 P.T. STA = 1765+50.95  
 PROP. C IL RTE 13 CURVE-3 DATA PI STA. = 1768+73.53 Δ = 6° 28' 51" (RT) D = 1° 00' 20" R = 5,697.65' T = 322.59' L = 644.48' E = 9.12' e = 2.0% P.C. STA = 1765+50.95 P.T. STA = 1771+95.43

PROP. C FRONTAGE ROAD CURVE-1 DATA PI STA. = 484+72.82 Δ = 17° 04' 15" (RT) D = 1° 38' 13" R = 3,500.00' T = 525.29' L = 1,042.79' E = 39.20' P.C. STA. = 479+47.54 P.T. STA. = 489+90.33  
 PROP. C FRONTAGE ROAD CURVE-2 DATA PI STA. = 497+66.24 Δ = 5° 00' 00" (RT) D = 1° 54' 35" R = 3,000.00' T = 130.98' L = 261.80' E = 2.86' P.C. STA. = 496+35.26 P.T. STA. = 498+97.06



POINT COORDINATES

PT J98	N 392615.7492	E 798798.7945	PT J111	N 392590.7113	E 799225.6926
PT J99	N 392626.0418	E 798798.7889	PT J112	N 392388.2409	E 799899.4167
PT J100	N 392570.7934	E 799000.3255	PT J113	N 392238.9687	E 799669.5469
PT J101	N 392480.1674	E 799296.4391	PT J114	N 392152.8663	E 799643.1951
PT J102	N 392494.5107	E 799300.8288	PT J115	N 392220.8310	E 799426.2259
PT J104	N 392310.4085	E 799865.1349	PT J116	N 392330.0886	E 799240.0863
PT J105	N 392186.6370	E 799811.0667	PT J117	N 392368.3374	E 799251.7924
PT J108	N 392456.0471	E 798965.2072	PT J119	N 392267.3074	E 799581.9002
PT J109	N 392475.1715	E 798971.0603	PT J120	N 392268.6420	E 799440.8585
PT J110	N 392509.4327	E 799200.8172			



FILE NAME I:\dot\0906603\draw\cadd\sheet\099885\sh1-rowplan.dgn	USER NAME = OpenH&B Springfield	DESIGNED -	REVISED -	<b>STATE OF ILLINOIS DEPARTMENT OF TRANSPORTATION</b>	<b>RIGHT OF WAY PLANS</b>		F.A. RTE. 331	SECTION (1X-1) VB-1, B-1, N-4, R-3	COUNTY WILLIAMSON	TOTAL SHEETS 367	SHEET NO. 118
PLOT SCALE = 50.0000' / IN.	PLOT DATE = 12/12/2011	DRAWN -	REVISED -		PROJECT NON-FA	JOB NO. R99-004-03	CONTRACT NO. 98859		FED. ROAD DIST. NO. ILLINOIS FED. AID PROJECT		
CHECKED -	DATE = 12/9/11	REVISOR -	REVISOR -		SHEET NO. OF SHEETS	STA. TO STA.					