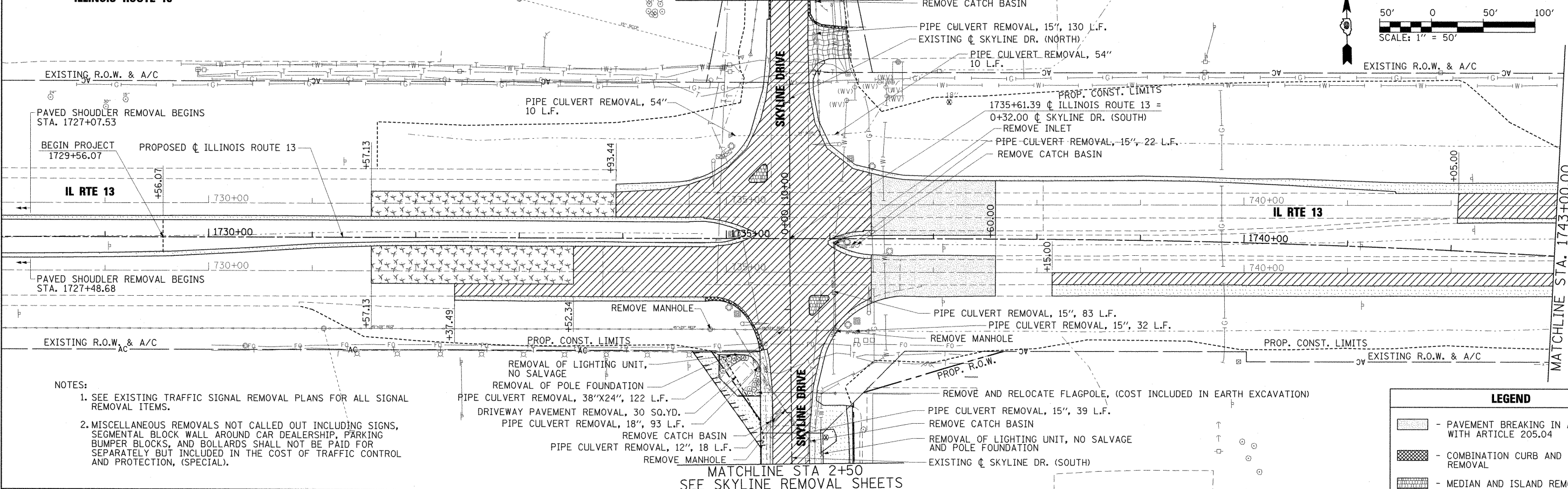
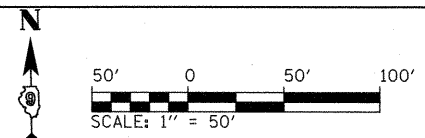


**ILLINOIS ROUTE 13**

MATCHLINE STA 12+00  
SEE SKYLINE REMOVAL SHEETS

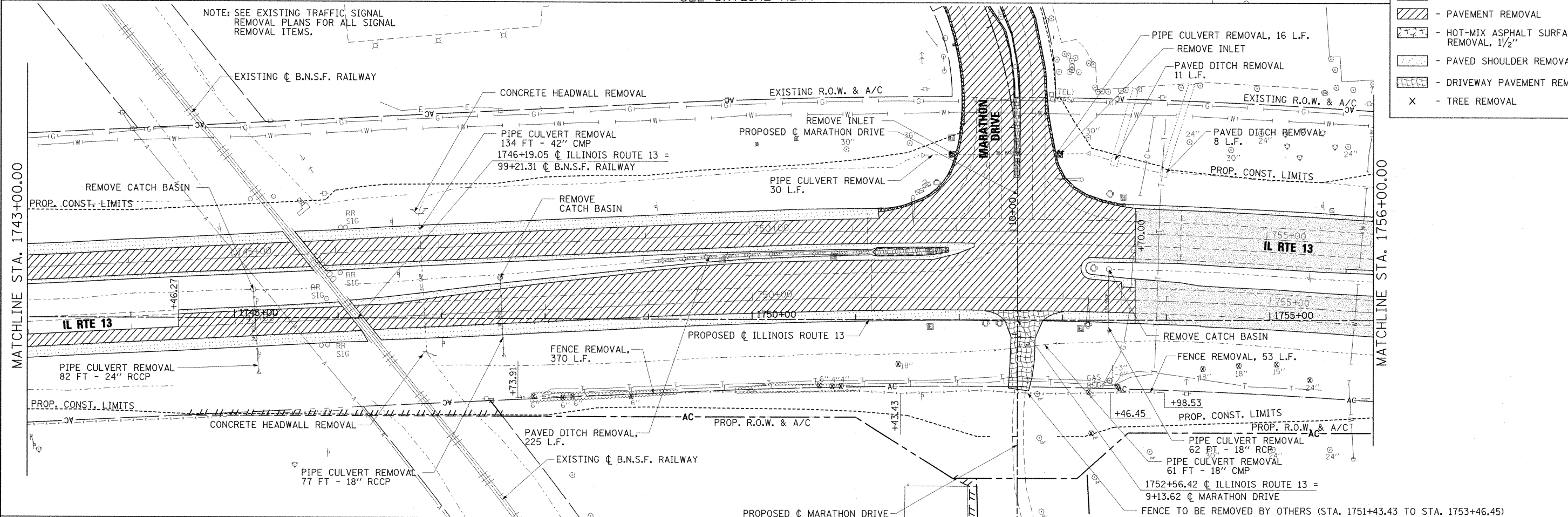


- NOTES:**
1. SEE EXISTING TRAFFIC SIGNAL REMOVAL PLANS FOR ALL SIGNAL REMOVAL ITEMS.
  2. MISCELLANEOUS REMOVALS NOT CALLED OUT INCLUDING SIGNS, SEGMENTAL BLOCK WALL AROUND CAR DEALERSHIP, PARKING BUMPER BLOCKS, AND BOLLARDS SHALL NOT BE PAID FOR SEPARATELY BUT INCLUDED IN THE COST OF TRAFFIC CONTROL AND PROTECTION, (SPECIAL).

**LEGEND**

	- PAVEMENT BREAKING IN ACCORDANCE WITH ARTICLE 205.04
	- COMBINATION CURB AND GUTTER REMOVAL
	- MEDIAN AND ISLAND REMOVAL
	- PAVEMENT REMOVAL
	- HOT-MIX ASPHALT SURFACE REMOVAL, 1/2"
	- PAVED SHOULDER REMOVAL
	- DRIVEWAY PAVEMENT REMOVAL
	- TREE REMOVAL

MATCHLINE STA 2+50  
SEE SKYLINE REMOVAL SHEETS



NOTE: SEE EXISTING TRAFFIC SIGNAL REMOVAL PLANS FOR ALL SIGNAL REMOVAL ITEMS.

FILE NAME =	USER NAME = OpenH&B Springfield	DESIGNED - BMB	REVISED -
I:\dot\09066803\draw\CADD_Sheets\099885	sh-t-rem001.dgn	DRAWN - JWH	REVISED -
PLOT SCALE = 50.0000' / IN.	CHECKED - KPF & SPH	DATE - 12/9/11	REVISED -
PLOT DATE = 12/14/2011			

**STATE OF ILLINOIS  
DEPARTMENT OF TRANSPORTATION**

**REMOVAL PLAN  
ILLINOIS ROUTE 13**

SCALE: 1" = 50' SHEET NO. OF SHEETS STA. 1729+37.13 TO STA. 1756+00.00

F.A. RTE.	SECTION	COUNTY	TOTAL SHEETS	SHEET NO.
331	(1X-1) VB-1, B-1, N-4, R-3	WILLIAMSON	367	120
			CONTRACT NO. 98859	
ILLINOIS FED. AID PROJECT				