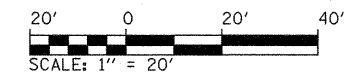


PR 2-CC
95' - 300'
Ø 1 = 8'

PR 2-CC RADIUS POINTS
 (A) STA. 1733+93.54, 56.12' LT.
 (B) STA. 1734+68.22, 67.71' LT.
 (C) STA. 11+27.34, 24.00' LT. (SKYLINE N.)

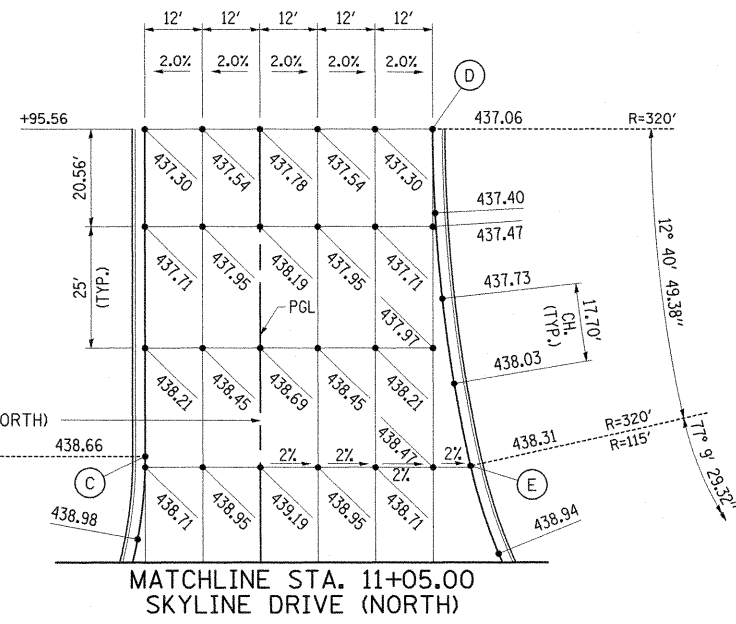
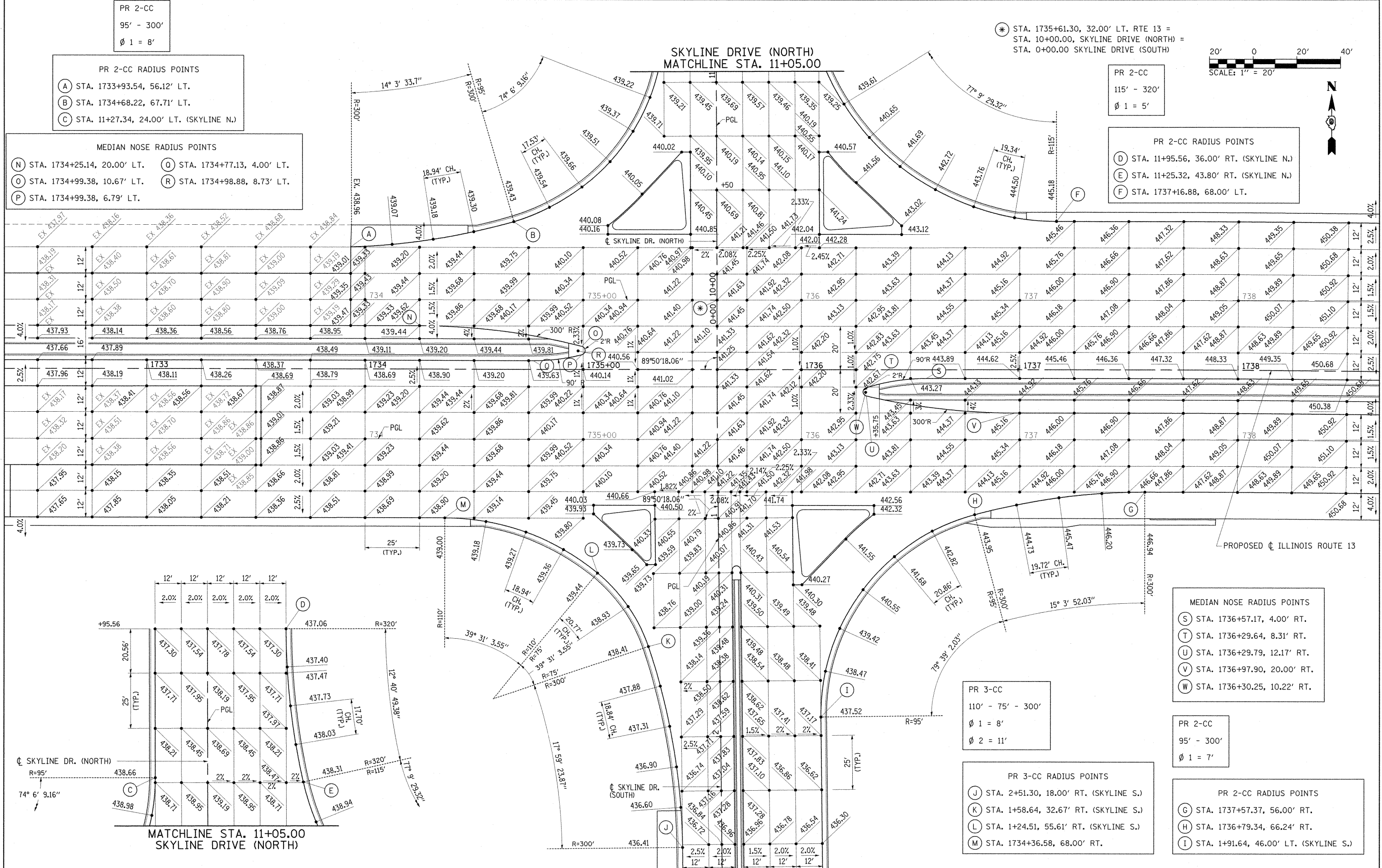
MEDIAN NOSE RADIUS POINTS
 (N) STA. 1734+25.14, 20.00' LT.
 (O) STA. 1734+77.13, 4.00' LT.
 (P) STA. 1734+99.38, 10.67' LT.
 (R) STA. 1734+98.88, 8.73' LT.

⊙ STA. 1735+61.30, 32.00' LT. RTE 13 =
 STA. 10+00.00, SKYLINE DRIVE (NORTH) =
 STA. 0+00.00 SKYLINE DRIVE (SOUTH)



PR 2-CC
115' - 320'
Ø 1 = 5'

PR 2-CC RADIUS POINTS
 (D) STA. 11+95.56, 36.00' RT. (SKYLINE N.)
 (E) STA. 11+25.32, 43.80' RT. (SKYLINE N.)
 (F) STA. 1737+16.88, 68.00' LT.



MEDIAN NOSE RADIUS POINTS
 (S) STA. 1736+57.17, 4.00' RT.
 (T) STA. 1736+29.64, 8.31' RT.
 (U) STA. 1736+29.79, 12.17' RT.
 (V) STA. 1736+97.90, 20.00' RT.
 (W) STA. 1736+30.25, 10.22' RT.

PR 3-CC
110' - 75' - 300'
Ø 1 = 8'
Ø 2 = 11'

PR 3-CC RADIUS POINTS
 (J) STA. 2+51.30, 18.00' RT. (SKYLINE S.)
 (K) STA. 1+58.64, 32.67' RT. (SKYLINE S.)
 (L) STA. 1+24.51, 55.61' RT. (SKYLINE S.)
 (M) STA. 1734+36.58, 68.00' RT.

PR 2-CC
95' - 300'
Ø 1 = 7'

PR 2-CC RADIUS POINTS
 (G) STA. 1737+57.37, 56.00' RT.
 (H) STA. 1736+79.34, 66.24' RT.
 (I) STA. 1+91.64, 46.00' LT. (SKYLINE S.)