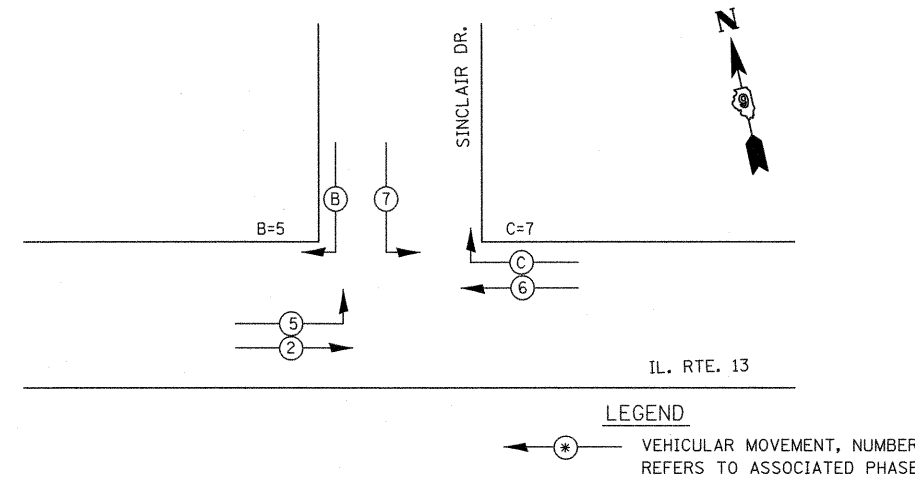


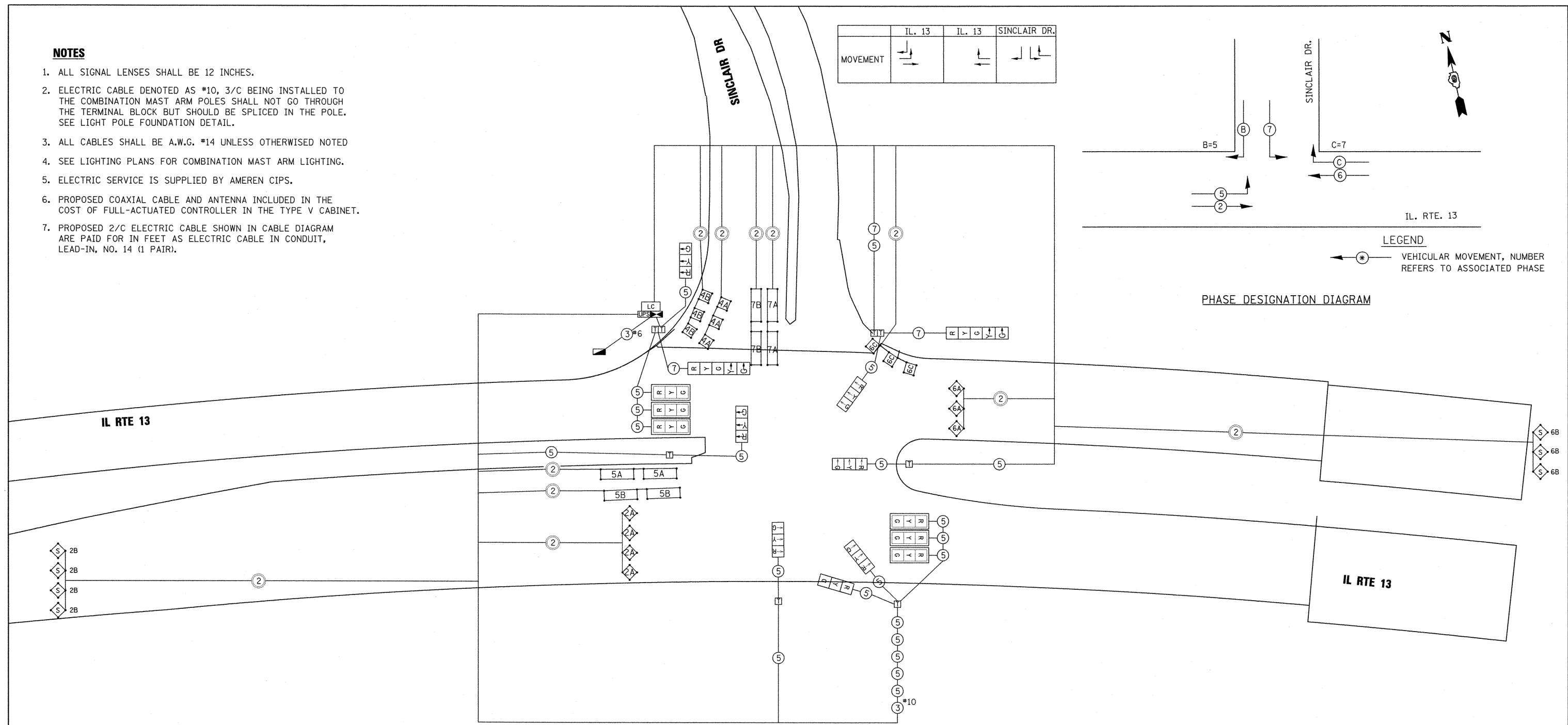
NOTES

1. ALL SIGNAL LENSES SHALL BE 12 INCHES.
2. ELECTRIC CABLE DENOTED AS #10, 3/C BEING INSTALLED TO THE COMBINATION MAST ARM POLES SHALL NOT GO THROUGH THE TERMINAL BLOCK BUT SHOULD BE SPLICED IN THE POLE. SEE LIGHT POLE FOUNDATION DETAIL.
3. ALL CABLES SHALL BE A.W.G. #14 UNLESS OTHERWISE NOTED
4. SEE LIGHTING PLANS FOR COMBINATION MAST ARM LIGHTING.
5. ELECTRIC SERVICE IS SUPPLIED BY AMEREN CIPS.
6. PROPOSED COAXIAL CABLE AND ANTENNA INCLUDED IN THE COST OF FULL-ACTUATED CONTROLLER IN THE TYPE V CABINET.
7. PROPOSED 2/C ELECTRIC CABLE SHOWN IN CABLE DIAGRAM ARE PAID FOR IN FEET AS ELECTRIC CABLE IN CONDUIT, LEAD-IN, NO. 14 (1 PAIR).

	IL. 13	IL. 13	SINCLAIR DR.
MOVEMENT			



PHASE DESIGNATION DIAGRAM



PROPOSED TRAFFIC SIGNALS LEGEND (SHEET DETAILS)

- INDICATES TERMINAL BLOCK IN MAST ARM POLE BASE
- SIGNAL SECTION 12"
- TRAFFIC SIGNAL WITH BACKPLATE
- TRAFFIC SIGNAL CONTROLLER CABINET
- HANDHOLE
- SERVICE INSTALLATION/TRANSFORMER
- NUMBER IN CIRCLE INDICATES NUMBER OF CONDUCTORS IN THAT CABLE
- UNINTERRUPTIBLE POWER SUPPLY
- INDICATES 2/C TWISTED, SHIELDED CABLE IN CONDUIT
- INDICATED MULTIPLE CABLES
- NUMBER IN PARENTHESIS INDICATES PHASE
- PROPOSED LIGHT CONTROLLER
- GULFBOX JUNCTION
- PROPOSED DETECTOR LOOPS, SIZE VARIES
- PROPOSED ADVANCED LOOPS, 5'X5'
- INDICATES 5'X5' ADVANCED LOOPS: NUMBER INDICATES PHASE, LETTER INDICATES AMPLIFIER, "S" INDICATES SYSTEM LOOP