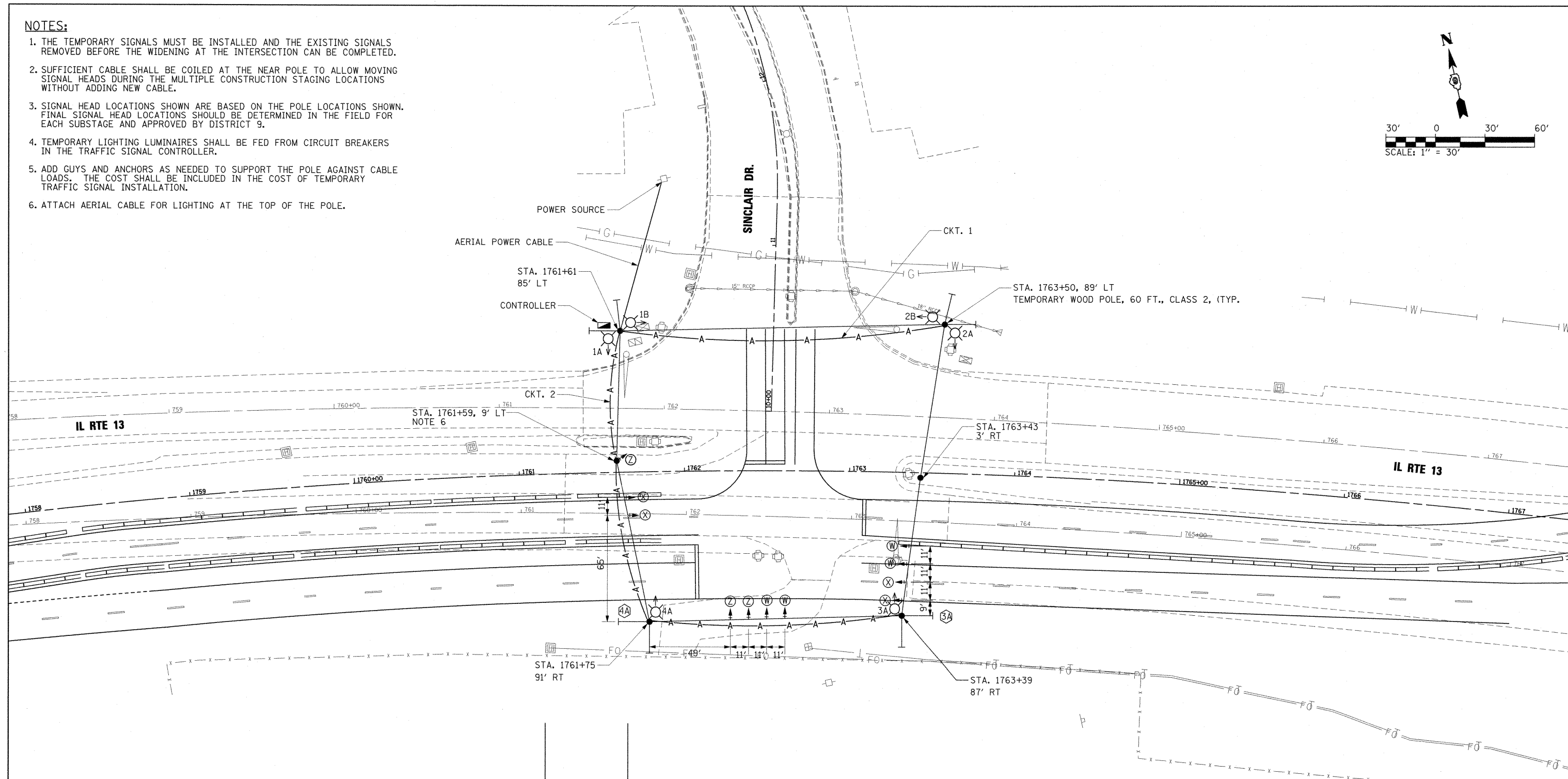
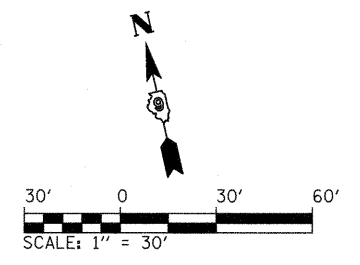


**NOTES:**

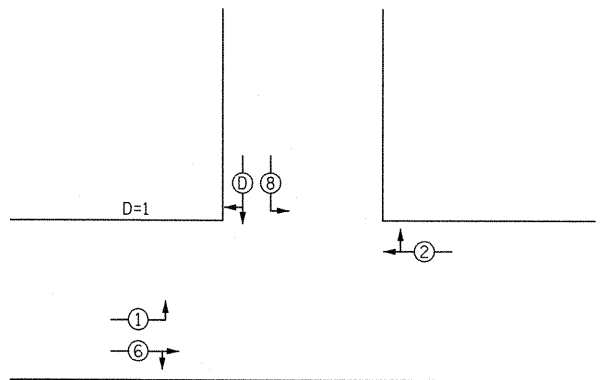
1. THE TEMPORARY SIGNALS MUST BE INSTALLED AND THE EXISTING SIGNALS REMOVED BEFORE THE WIDENING AT THE INTERSECTION CAN BE COMPLETED.
2. SUFFICIENT CABLE SHALL BE COILED AT THE NEAR POLE TO ALLOW MOVING SIGNAL HEADS DURING THE MULTIPLE CONSTRUCTION STAGING LOCATIONS WITHOUT ADDING NEW CABLE.
3. SIGNAL HEAD LOCATIONS SHOWN ARE BASED ON THE POLE LOCATIONS SHOWN. FINAL SIGNAL HEAD LOCATIONS SHOULD BE DETERMINED IN THE FIELD FOR EACH SUBSTAGE AND APPROVED BY DISTRICT 9.
4. TEMPORARY LIGHTING LUMINAIRES SHALL BE FED FROM CIRCUIT BREAKERS IN THE TRAFFIC SIGNAL CONTROLLER.
5. ADD GUYS AND ANCHORS AS NEEDED TO SUPPORT THE POLE AGAINST CABLE LOADS. THE COST SHALL BE INCLUDED IN THE COST OF TEMPORARY TRAFFIC SIGNAL INSTALLATION.
6. ATTACH AERIAL CABLE FOR LIGHTING AT THE TOP OF THE POLE.



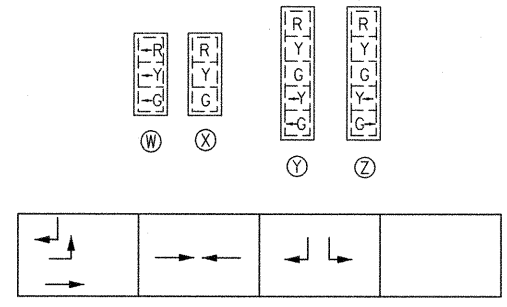
**TEMPORARY LIGHTING LEGEND**

400 W HPS MULTIMOUNT LUMINAIRE, 52' MOUNTING HEIGHT, ARROW INDICATES LUMINAIRE AIMING DIRECTION

AERIAL CABLE, 2-1/2" NO. 4 WITH MESSENGER WIRE



PHASING DIAGRAM



SEQUENCE OF OPERATIONS

FILE NAME =	USER NAME = OpenH&B Springfield	DESIGNED - IDOT CENTRAL OFFICE	REVISED -	<b>STATE OF ILLINOIS DEPARTMENT OF TRANSPORTATION</b>	<b>TEMPORARY SIGNAL &amp; LIGHTING PLAN STAGE 2 (VARIOUS SUBSTAGES) ILLINOIS ROUTE 13 AND SINCLAIR DRIVE</b>	F.A. RTE.	SECTION	COUNTY	TOTAL SHEETS	SHEET NO.	
331	(IX-1) VB-1, B-1, N-4, R-3	WILLIAMSON	367			158					
						CONTRACT NO. 98859					
						ILLINOIS FED. AID PROJECT					
DRAWN - GLD (CMT)		CHECKED - SPH		DATE - 12/9/11		SCALE: 1" = 30'	SHEET NO.	OF SHEETS	STA.	TO STA.	