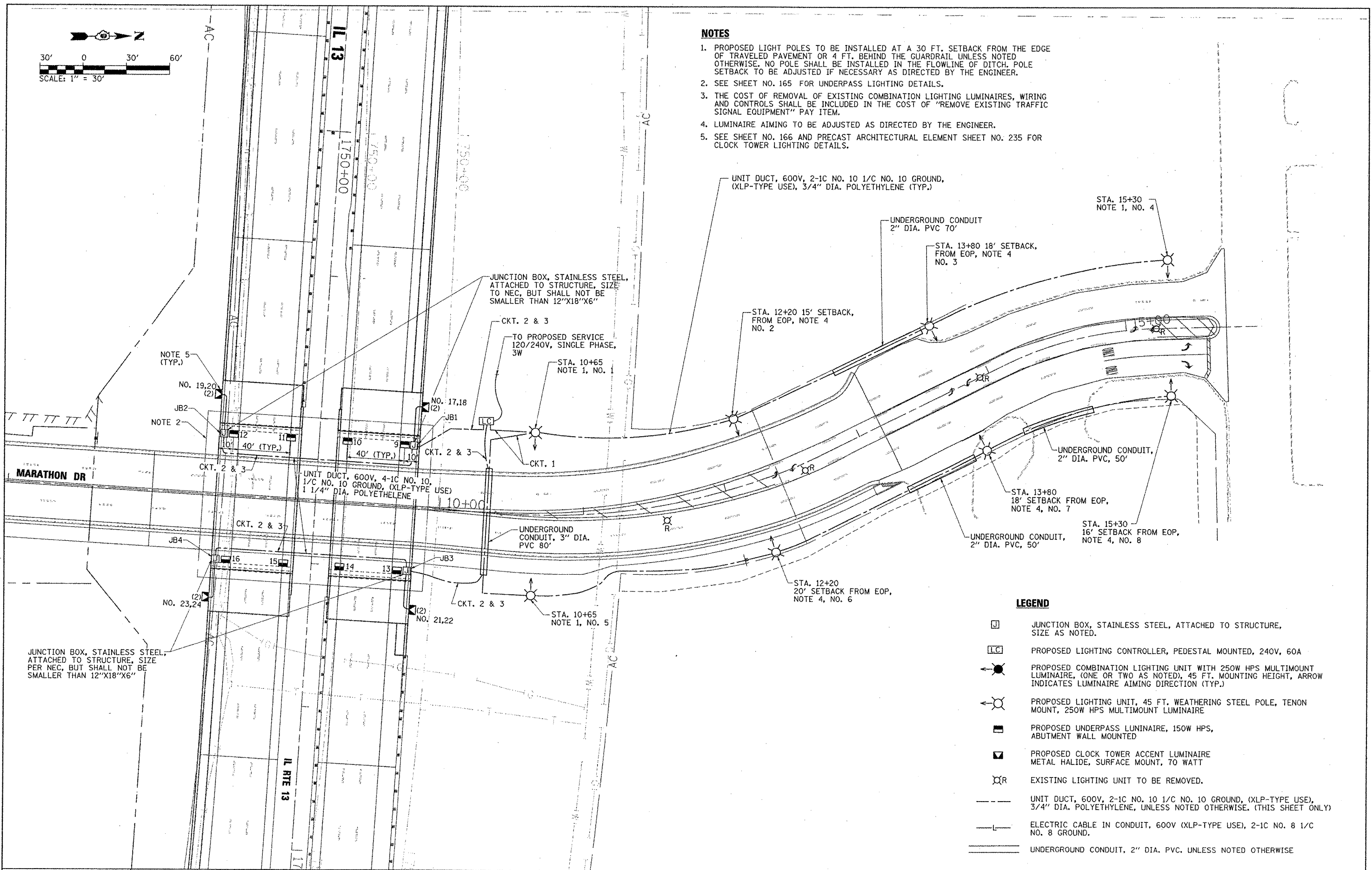


NOTES

1. PROPOSED LIGHT POLES TO BE INSTALLED AT A 30 FT. SETBACK FROM THE EDGE OF TRAVELED PAVEMENT OR 4 FT. BEHIND THE GUARDRAIL UNLESS NOTED OTHERWISE. NO POLE SHALL BE INSTALLED IN THE FLOWLINE OF DITCH. POLE SETBACK TO BE ADJUSTED IF NECESSARY AS DIRECTED BY THE ENGINEER.
2. SEE SHEET NO. 165 FOR UNDERPASS LIGHTING DETAILS.
3. THE COST OF REMOVAL OF EXISTING COMBINATION LIGHTING LUMINAIRES, WIRING AND CONTROLS SHALL BE INCLUDED IN THE COST OF "REMOVE EXISTING TRAFFIC SIGNAL EQUIPMENT" PAY ITEM.
4. LUMINAIRE AIMING TO BE ADJUSTED AS DIRECTED BY THE ENGINEER.
5. SEE SHEET NO. 166 AND PRECAST ARCHITECTURAL ELEMENT SHEET NO. 235 FOR CLOCK TOWER LIGHTING DETAILS.



LEGEND

- JUNCTION BOX, STAINLESS STEEL, ATTACHED TO STRUCTURE, SIZE AS NOTED.
- PROPOSED LIGHTING CONTROLLER, PEDESTAL MOUNTED, 240V, 60A
- PROPOSED COMBINATION LIGHTING UNIT WITH 250W HPS MULTIMOUNT LUMINAIRE, (ONE OR TWO AS NOTED), 45 FT. MOUNTING HEIGHT, ARROW INDICATES LUMINAIRE AIMING DIRECTION (TYP.)
- PROPOSED LIGHTING UNIT, 45 FT. WEATHERING STEEL POLE, TENON MOUNT, 250W HPS MULTIMOUNT LUMINAIRE
- PROPOSED UNDERPASS LUMINAIRE, 150W HPS, ABUTMENT WALL MOUNTED
- PROPOSED CLOCK TOWER ACCENT LUMINAIRE METAL HALIDE, SURFACE MOUNT, 70 WATT
- EXISTING LIGHTING UNIT TO BE REMOVED.
- UNIT DUCT, 600V, 2-1C NO. 10 1/C NO. 10 GROUND, (XLP-TYPE USE), 3/4" DIA. POLYETHYLENE, UNLESS NOTED OTHERWISE. (THIS SHEET ONLY)
- ELECTRIC CABLE IN CONDUIT, 600V (XLP-TYPE USE), 2-1C NO. 8 1/C NO. 8 GROUND.
- UNDERGROUND CONDUIT, 2" DIA. PVC. UNLESS NOTED OTHERWISE

| | | | |
|--|------------------------|--------------------------------|-----------|
| FILE NAME = I:\dot\0985603\draw\cadd\sheet\0998859\shht-Light002-Rt13.dgn | USER NAME = Gary Davis | DESIGNED - IDOT CENTRAL OFFICE | REVISED - |
| PLOT SCALE = 30.0000 / IN. | | DRAWN - GLD (ICMT) | REVISED - |
| PLOT DATE = 1/26/2012 | | CHECKED - | REVISED - |
| | | DATE - 12/9/11 | REVISED - |

**STATE OF ILLINOIS
DEPARTMENT OF TRANSPORTATION**

**PROPOSED LIGHTING PLAN
MARATHON DR. - IL RT 13 INTERSECTION**

SCALE: 1" = 30' SHEET NO. OF SHEETS STA. TO STA.

| | | | | |
|--------------------|---------------------------------------|----------------------|---------------------------|------------------|
| F.A. RTE. 331 | SECTION (IX-1) VB-1, B-1, N-4, R-3 | COUNTY WILLIAMSON | TOTAL SHEETS 367 | SHEET NO. 161 |
| CONTRACT NO. 98859 | | | ILLINOIS FED. AID PROJECT | |