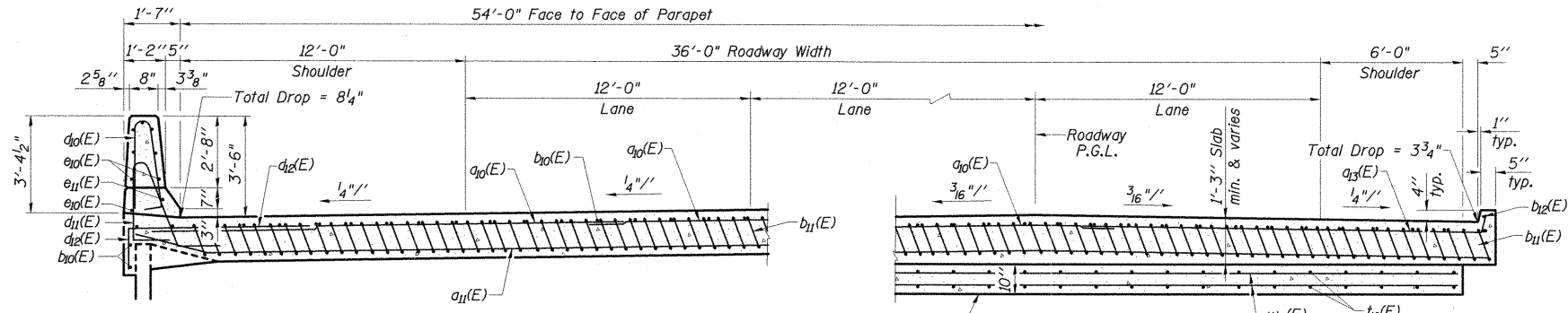


PARAPET JOINT DETAILS

FOUR APPROACHES BILL OF MATERIAL

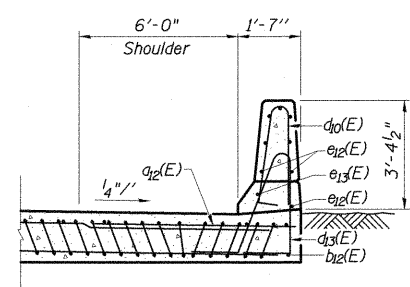
Bar	No.	Size	Length	Shape
a10(E)	252	#4	25'-8"	
a11(E)	552	#5	26'-0"	
a12(E)	48	#6	6'-6"	
a13(E)	48	#4	26'-1"	
b10(E)	184	#4	29'-8"	
b11(E)	512	#9	29'-9"	
b12(E)	8	#4	14'-8"	
d10(E)	200	#5	6'-10"	
d11(E)	132	#5	7'-9"	
d12(E)	96	#6	7'-11"	
d13(E)	68	#5	7'-11"	
e10(E)	32	#4	29'-8"	
e11(E)	4	#8	29'-8"	
e12(E)	32	#4	14'-8"	
e13(E)	4	#8	14'-8"	
t10(E)	440	#4	12'-6"	
w10(E)	480	#5	24'-8"	
Bridge Deck Grooving	Sq. Yd.	694		
Protective Coat	Sq. Yd.	834		
Concrete Superstructure	Cu. Yd.	329.4		
Concrete Structures	Cu. Yd.	87.2		
Reinforcement Bars, Epoxy Coated	Pound	97,760		



NEAR ABUTMENT (Showing Outside Shoulder)

SECTION B-B

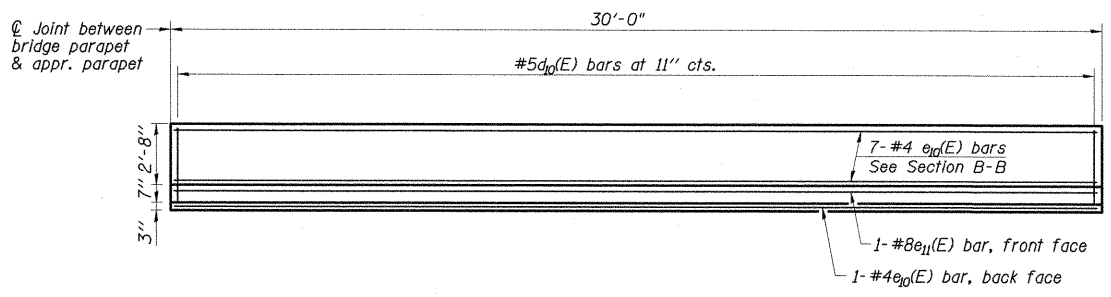
AT APPROACH FOOTING (Showing Inside Shoulder)



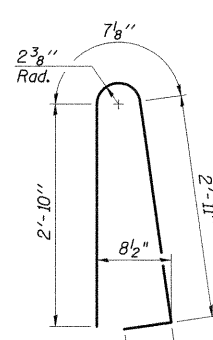
NEAR ABUTMENT (Showing Inside Shoulder)

S.N. 100-0093
Elev. 469.31 (W. Appr.)
Elev. 475.49 (E. Appr.)
S.N. 100-0094
Elev. 471.53 (W. Appr.)
Elev. 475.42 (E. Appr.)
(Level Out-to-Out)

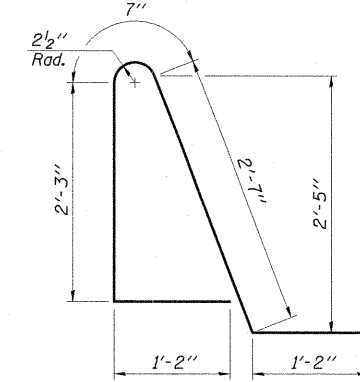
* Tilt #9 b11(E) bars as required to maintain clearance.
*** Cost included with Concrete Superstructure.



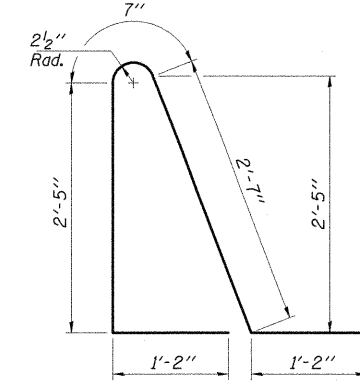
VIEW D-D



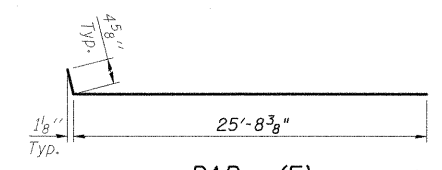
BAR d10(E)



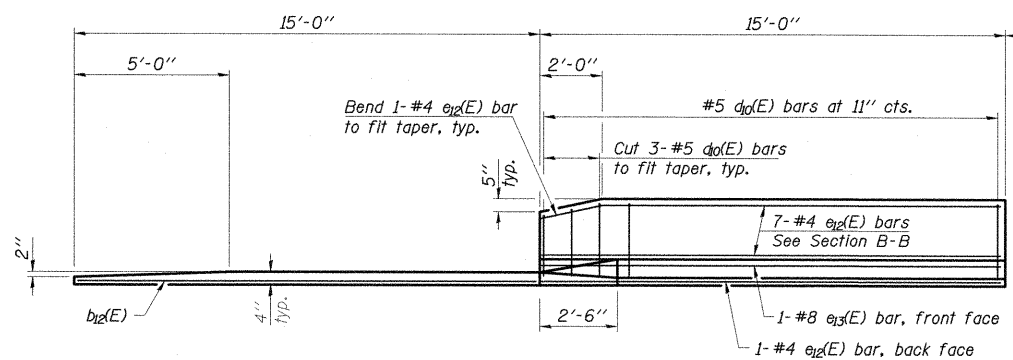
BAR d11(E)



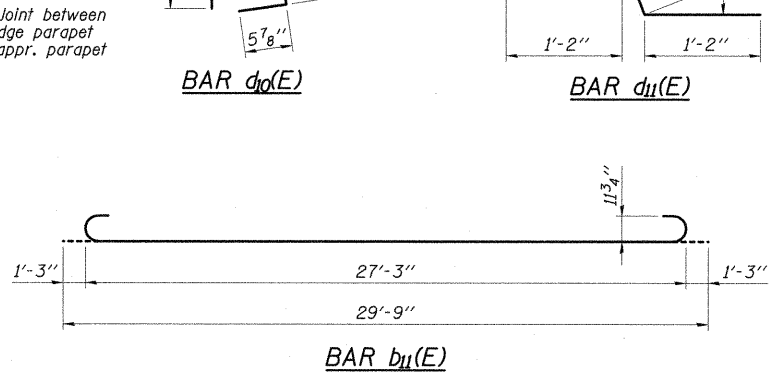
BAR d13(E)



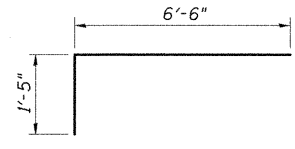
BAR a13(E)



VIEW E-E



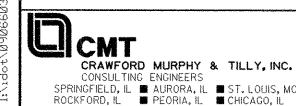
BAR b11(E)



BAR d12(E)

NOTES:

- See Sheet S-21 of S-41 for Detail A and Views B-B & G-G.
- Approach slab and parapet concrete shall be paid for as Concrete Superstructure.
- Approach footing concrete shall be paid for as Concrete Structures.
- Reinforcement shall be paid for as Reinforcement Bars, Epoxy Coated.
- For v(E) bar details, see Sheets S-13 thru S-19 of S-41.
- The approach footing maximum applied service bearing pressure (Qmax) = 2.0 ksf.
- For bar splicer details, see Sheet S-20 of S-41.
- Cost of excavation for approach footing included with Concrete Structures.
- For Porous Granular Embankment (Special) and drainage treatment details, see Sheet S-2 of S-41.
- For additional parapet details, see Sheet S-17 of S-41.



USER NAME = Gary Davis	DESIGNED - MCC	REVISED -
PLOT SCALE =	CHECKED - ATI	REVISED -
PLOT DATE = 12/7/2011	DRAWN - GLD	REVISED -
	CHECKED - ATI	REVISED -

STATE OF ILLINOIS
DEPARTMENT OF TRANSPORTATION

APPROACH SLAB DETAILS II
STRUCTURE NO. 100-0093 (W.B.) & 100-0094 (E.B.)
SHEET NO. S-22 OF S-41 SHEETS

F.A.P. RTE. 331	SECTION (1X-1)VB-1	COUNTY WILLIAMSON	TOTAL SHEETS 367	SHEET NO. 188
			CONTRACT NO. 98859	
ILLINOIS FED. AID PROJECT				

FILE NAME: I:\vdot\0906693\Drawings\structure\plans\app\bridge\APPROACH SLAB DETAILS 2.dgn