

GENERAL NOTES

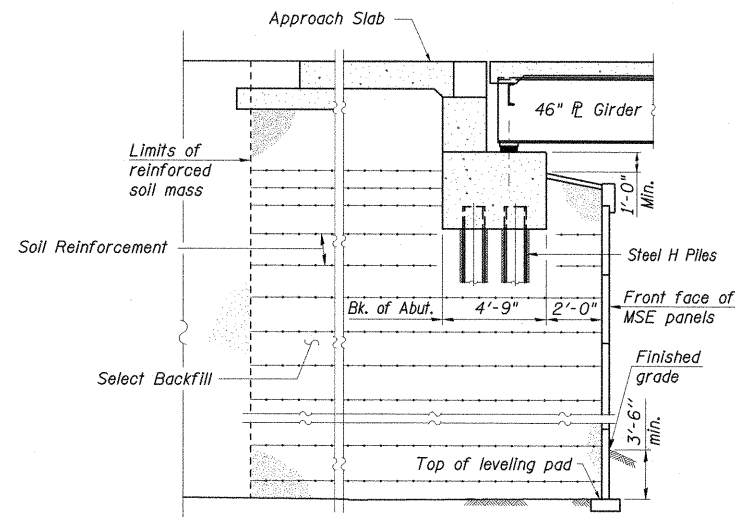
- Fasteners shall be AASHTO M164 Type I, mechanically galvanized bolts. Bolts 3/4 in. ϕ , holes 15/16 in. ϕ , unless otherwise noted.
- Calculated weight of Structural Steel = 239,512 lbs. (AASHTO M270 Grade 50)
= 26,880 lbs. (AASHTO M270 Grade 36)
- No field welding is permitted except as specified in the contract documents.
- Reinforcement bars designated (E) shall be epoxy coated.
- Concrete Sealer shall be applied to the designated areas of the abutments.
- The Inorganic Zinc Rich Primer / Acrylic / Acrylic Paint System shall be used for shop and field painting of new structural steel except where otherwise noted. The color of the final finish coat for all interior steel surfaces shall be gray, Munsell No. 5B 7/1. The color of the final finish coat for the exterior and bottom flange of the fascia beams shall be Reddish Brown, Munsell No. 2.5YR 3/4.
- Precast Architectural Element Footings shall be constructed and paid for with S.N. 100-W002 & S.N. 100-W003.
- Slipforming of the parapets is not allowed.

TOTAL BILL OF MATERIAL (S.N. 100-0095)

ITEM	UNIT	SUPER	SUB	TOTAL
Concrete Structures	Cu. Yd.		154.9	154.9
Concrete Superstructure	Cu. Yd.	361.9		361.9
Bridge Deck Grooving	Sq. Yd.	924		924
Protective Coat	Sq. Yd.	1,081		1,081
Furnishing and Erecting Structural Steel	L. Sum	.1		.1
Stud Shear Connectors	Each	2,709		2,709
Reinforcement Bars, Epoxy Coated	Pound	88,880	12,200	101,080
Bar Splacers	Each		108	108
Furnishing Steel Piles HP 12X53	Foot		1462	1462
Driving Piles	Foot		1462	1462
Test Pile Steel HP 12X53	Each		1	1
Name Plates	Each	1		1
Preformed Joint Strip Seal	Foot	112		112
Elastomeric Bearing Assembly, Type I	Each	7		7
Anchor Bolts, 3/4"	Each	14		14
Anchor Bolts, 1/4"	Each	14		14
Concrete Sealer	Sq. Ft.		1,054	1,054
Architectural Precast Concrete Panel	Each			2
Anti-Graffiti Protection System	Sq. Ft.			398

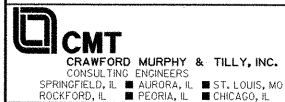
TOTAL BILL OF MATERIAL (S.N. 100-0096)

ITEM	UNIT	SUPER	SUB	TOTAL
Concrete Structures	Cu. Yd.		154.9	154.9
Concrete Superstructure	Cu. Yd.	361.9		361.9
Bridge Deck Grooving	Sq. Yd.	924		924
Protective Coat	Sq. Yd.	1,081		1,081
Furnishing and Erecting Structural Steel	L. Sum	.1		.1
Stud Shear Connectors	Each	2,709		2,709
Reinforcement Bars, Epoxy Coated	Pound	88,880	12,200	101,080
Bar Splacers	Each		108	108
Furnishing Steel Piles HP 12X53	Foot		1461	1461
Driving Piles	Foot		1461	1461
Test Pile Steel HP 12X53	Each		1	1
Name Plates	Each	1		1
Preformed Joint Strip Seal	Foot	112		112
Elastomeric Bearing Assembly, Type I	Each	7		7
Anchor Bolts, 3/4"	Each	14		14
Anchor Bolts, 1/4"	Each	14		14
Concrete Sealer	Sq. Ft.		1,054	1,054
Architectural Precast Concrete Panel	Each			2
Anti-Graffiti Protection System	Sq. Ft.			425



**SECTION THRU PILE SUPPORTED
STUB ABUTMENT**
(Horiz. dim. @ Rt. L's)

Note:
See S.N. 100-W002 and S.N. 100-W003 plans for additional details and Select Backfill quantities.



FILE NAME = I:\dot\0906603\draw\cadd\sheet\structure\plans\marathon dr bridge\marathon_final.dwg
PLOT SCALE =
PLOT DATE =

DESIGNED - SF	REVISIONS
CHECKED - WLB	REVISIONS
DRAWN - GLD	REVISIONS
CHECKED - SF	REVISIONS

**STATE OF ILLINOIS
DEPARTMENT OF TRANSPORTATION**

GENERAL DATA
STRUCTURE NO. 100-0095 (W.B.) & 100-0096 (E.B.)

F.A.P. RTE.	SECTION	COUNTY	TOTAL SHEETS	SHEET NO.
331	(1X-1) VB-1, B-1, N-4, R-3	WILLIAMSON	367	209
CONTRACT NO. 98859				
ILLINOIS FED. AID PROJECT				