

NOTES:

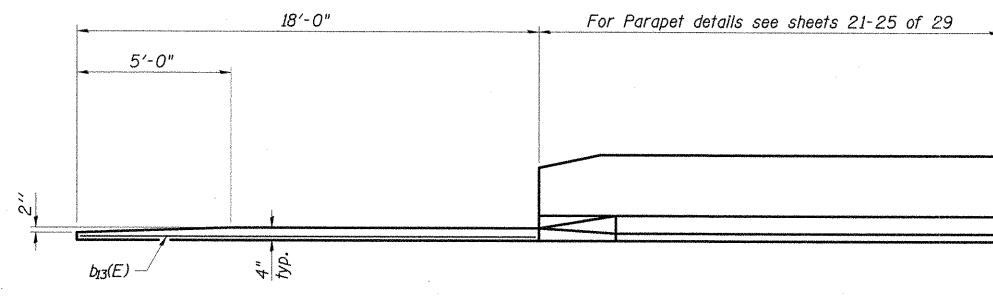
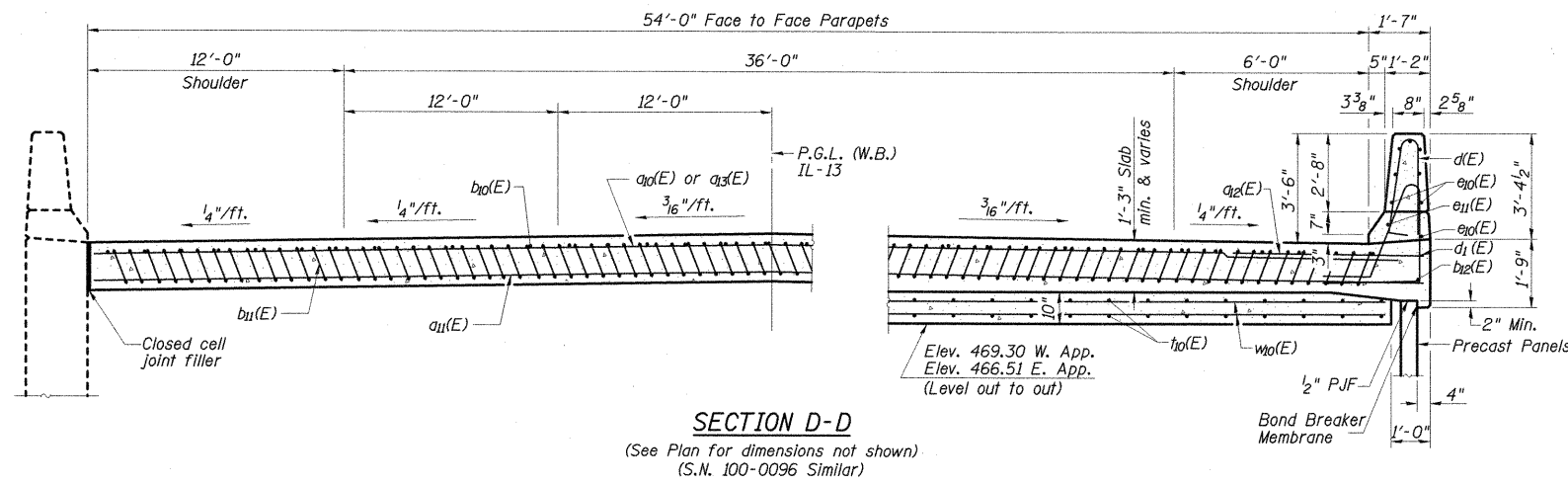
1. See sheet 15 of 32 for Detail A and View B-B.
2. Approach slab and parapet concrete shall be paid for as Concrete Superstructure.
3. Approach footing concrete shall be paid for as Concrete Structures.
4. Reinforcement shall be paid for as Reinforcement Bars, Epoxy Coated.
5. For v(E) bar details, see sheets 21 & 22 of 32.
6. The approach footing maximum applied service bearing pressure (Omax) = 2.0 ksf.
7. For bar splicer details, see sheet 26 of 32.
8. Cost of excavation for approach footing included with Concrete Structures.
9. For Select Backfill and drainage treatment details, see S.N. 100-W002 and S.N. 100-W003 plans.
10. For additional parapet details, see sheet 13 of 32.

**S.N. 100-0095 (E.B. & W.B.) APPROACH
BILL OF MATERIAL**

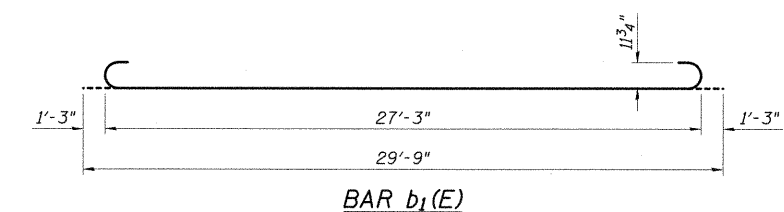
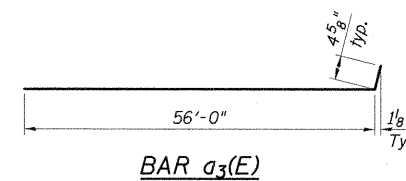
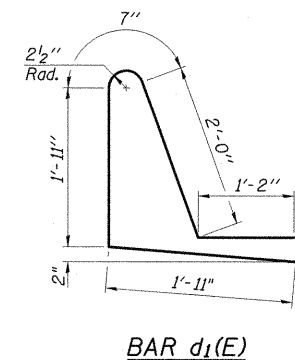
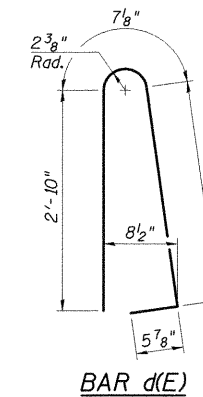
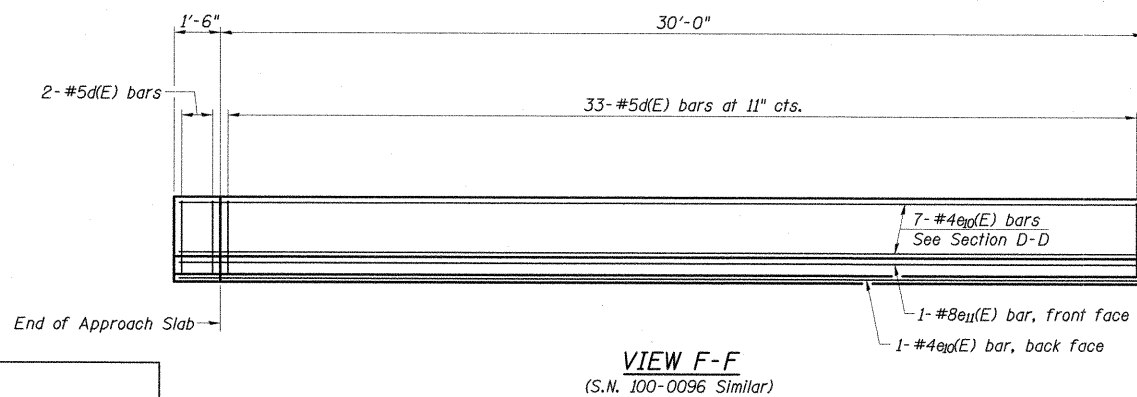
Bar	No.	Size	Length	Shape
a1(E)	18	#4	55'-3"	
a11(E)	92	#5	55'-3"	
a2(E)	50	#6	6'-6"	
a3(E)	32	#4	56'-4"	
a4(E)	4	#5	2'-0"	
b1(E)	88	#4	29'-8"	
b11(E)	258	#9	29'-9"	
b2(E)	2	#4	29'-8"	
b3(E)	2	#4	18'-8"	
d(E)	70	#5	6'-10"	
d1(E)	70	#5	7'-7"	
e1(E)	16	#4	31'-2"	
e11(E)	2	#8	31'-2"	
f1(E)	224	#4	9'-8"	
f2(E)	80	#5	55'-2"	
Reinforcement Bars, Epoxy Coated			Pound	43,180
Concrete Superstructure			Cu. Yd.	177.4
Concrete Structures			Cu. Yd.	34.2
Bridge Deck Grooving			Sq. Yd.	366
Protective Coat			Sq. Yd.	408

**S.N. 100-0096 (E.B. & W.B.) APPROACH
BILL OF MATERIAL**

Bar	No.	Size	Length	Shape
a1(E)	18	#4	55'-3"	
a11(E)	92	#5	55'-3"	
a2(E)	50	#6	6'-6"	
a3(E)	32	#4	56'-4"	
a4(E)	4	#5	2'-0"	
b1(E)	88	#4	29'-8"	
b11(E)	258	#9	29'-9"	
b2(E)	2	#4	29'-8"	
b3(E)	2	#4	18'-8"	
d(E)	70	#5	6'-10"	
d1(E)	70	#5	7'-7"	
e1(E)	16	#4	31'-2"	
e11(E)	2	#8	31'-2"	
f1(E)	224	#4	9'-8"	
f2(E)	80	#5	55'-2"	
Reinforcement Bars, Epoxy Coated			Pound	43,180
Concrete Superstructure			Cu. Yd.	177.4
Concrete Structures			Cu. Yd.	34.2
Bridge Deck Grooving			Sq. Yd.	366
Protective Coat			Sq. Yd.	408



* Tilt #9b1(E) bars as required to maintain clearance.
*** Cost included with Concrete Superstructure.



CMT
CRAWFORD MURPHY & TILLY, INC.
CONSULTING ENGINEERS
SPRINGFIELD, IL ■ AURORA, IL ■ ST. LOUIS, MO
ROCKFORD, IL ■ PEORIA, IL ■ CHICAGO, IL

FILE NAME =	USER NAME =	DESIGNED - SF	REVISED -
I:\dot\0906603\draw\cadd\sheet\structure\plans\marathon dr bridge\marathon.f.dgn		CHECKED - APPROVAL	REVISED -
		DRAWN - GLD	REVISED -
		CHECKED - SF	REVISED -

**STATE OF ILLINOIS
DEPARTMENT OF TRANSPORTATION**

**APPROACH SLAB DETAILS 2
STRUCTURE NO. 100-0095 (W.B.) & 100-0096 (E.B.)**

SHEET NO. 16 OF 32 SHEETS

F.A.P. RTE.	SECTION	COUNTY	TOTAL SHEETS	SHEET NO.
331	(1X-1) VB-1, B-1, N-4, R-3	WILLIAMSON	367	223
CONTRACT NO. 98859			ILLINOIS FED. AID PROJECT	