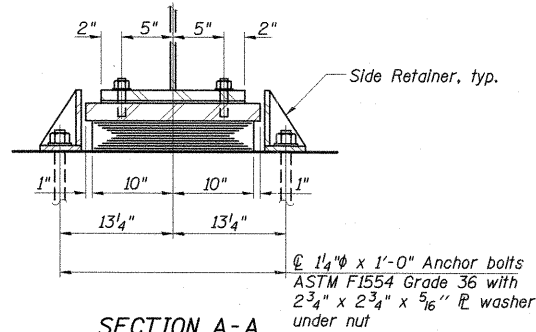
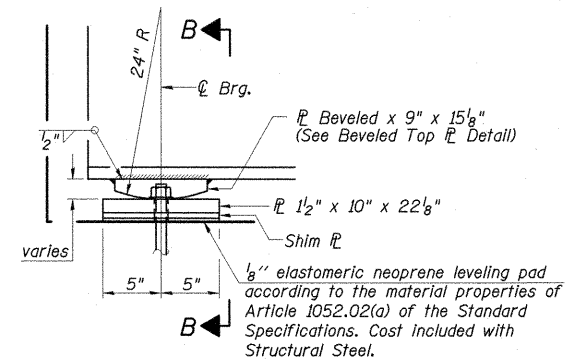


ELEVATION AT ABUT.



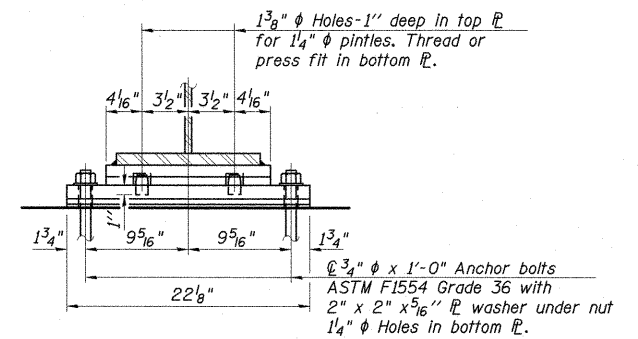
SECTION A-A

**TYPE I ELASTOMERIC EXP. BRG.**  
(@ West Abut.)

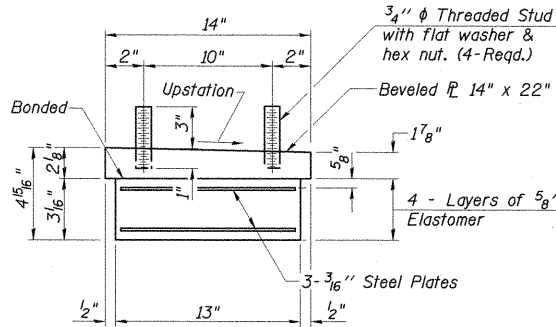


ELEVATION AT ABUTMENT

**FIXED BEARING**  
(@ East Abut.)

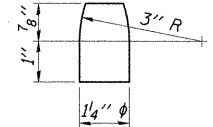


SECTION B-B

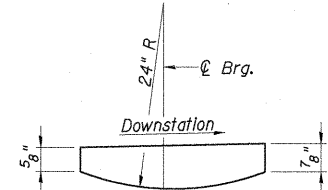


BEARING ASSEMBLY

Note:  
Shim plates shall not be placed under Bearing Assembly.



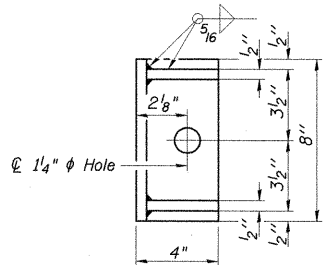
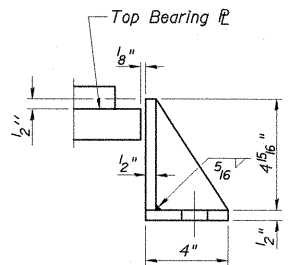
PINTLE



BEVELED TOP FL

**NOTES:**

- Anchor bolts shall be ASTM F1554 all-thread (or an Engineer-approved alternate material) of the grade(s) and diameter(s) specified. The corresponding specified grade of AASHTO M314 anchor bolts may be used in lieu of ASTM F1554.
- Anchor bolts at fixed bearings may be either cast in place or installed in holes drilled after the supported member is in place.
- Anchor bolts for side retainers may be cast in place or installed in holes drilled before or after members are in place.
- Drilled and set anchor bolts shall be installed according to Article 521.06 of the Standard Specifications.
- Side retainers and other steel members required for the elastomeric bearing assembly shall be included in the cost of Elastomeric Bearing Assembly, Type I.
- Two 1/8 in. adjusting shims shall be provided for each bearing in addition to all other plates or shims and placed as shown on bearing details.
- The structural steel plates of the Bearing Assembly shall conform to the requirements of AASHTO M270 Grade 50.
- The anchor bolt sizes and grades shown constitute a calculated seismic structural fuse. Substitution of higher diameter and/or grade anchor bolts will not be allowed.



SIDE RETAINER

Note:  
Equivalent rolled angle with stiffeners will be allowed in lieu of welded plates.

**S.N. 100-0095 (W.B.)**  
**BILL OF MATERIAL**

Item	Unit	Total
Elastomeric Bearing Assembly Type I	Each	7
Anchor Bolts, 3/4"	Each	14
Anchor Bolts, 1/4"	Each	14

**S.N. 100-0096 (E.B.)**  
**BILL OF MATERIAL**

Item	Unit	Total
Elastomeric Bearing Assembly Type I	Each	7
Anchor Bolts, 3/4"	Each	14
Anchor Bolts, 1/4"	Each	14



FILE NAME =  
I:\dot\B906603\draw\cadd\sheet\structure\plans\marathon dr bridge\marathon\_final\CHECKED\BEARING\B1\TAILS.dgn

USER NAME =	DESIGNED - SF	REVISED -
PLOT SCALE =	DRAWN - GLD	REVISED -
PLOT DATE =	CHECKED - SF	REVISED -

**STATE OF ILLINOIS**  
**DEPARTMENT OF TRANSPORTATION**

**BEARING DETAILS**  
**STRUCTURE NO. 100-0095 (W.B.) & 100-0096 (E.B.)**

F.A.P. RTE. =	SECTION =	COUNTY =	TOTAL SHEETS =	SHEET NO. =
331	(1X-1) VB-1, B-1, N-4, R-3	WILLIAMSON	367	227
			CONTRACT NO. 98859	