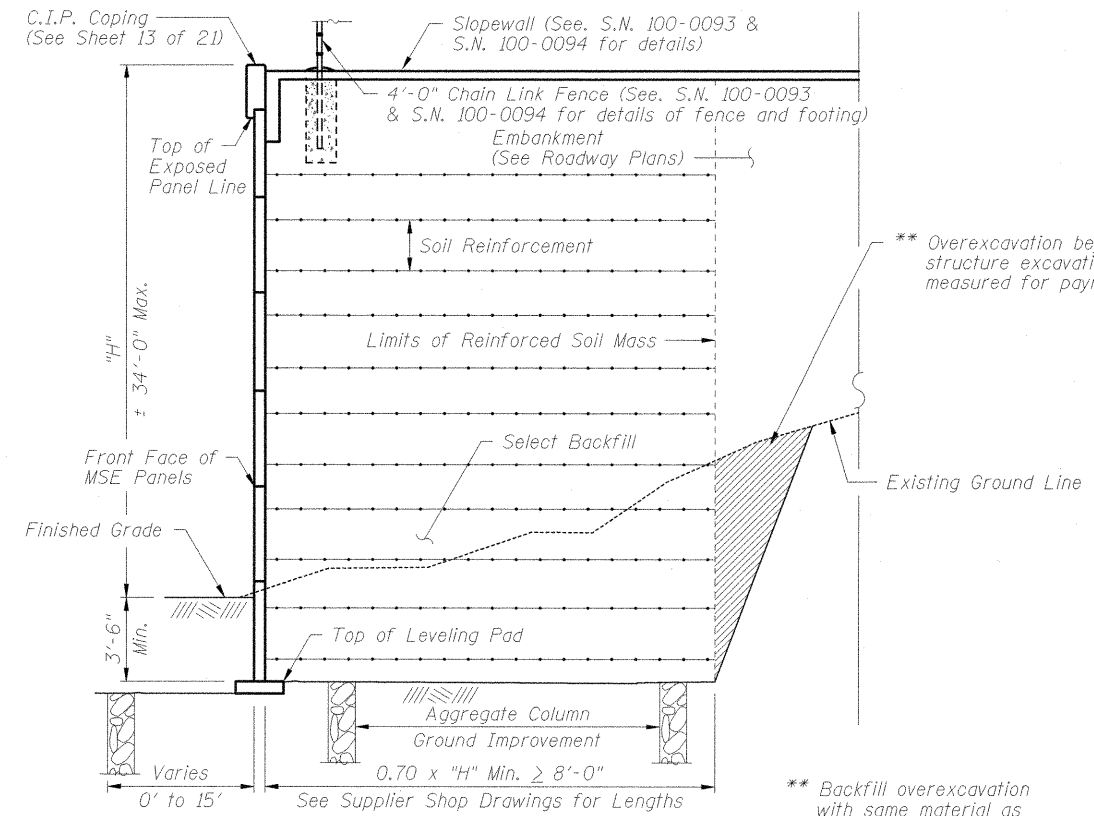


**NOTES:**  
 Wall offsets are measured from the C.I.L. 13 to the front face of MSE panels.  
 Longitudinal dimensions are measured along the front face of MSE panels.  
 Precast Architectural Elements not shown for clarity.

**WALL AT ABUTMENT ELEVATION**  
 (Looking West)

\*\*\*\* Leveling Pad & Precast Architectural Element Footing (See S.N. 100-0095 & S.N. 100-0096 for details)



**TYPICAL SECTION THRU WALL**

Sta. 1747+53.17 (South Wall) to Sta. 1748+27.21 (South Wall)  
 Sta. 1746+41.70 (North Wall) to Sta. 1747+15.80 (North Wall)

\*\*\* Overexcavation beyond the limits of structure excavation. This area not measured for payment.

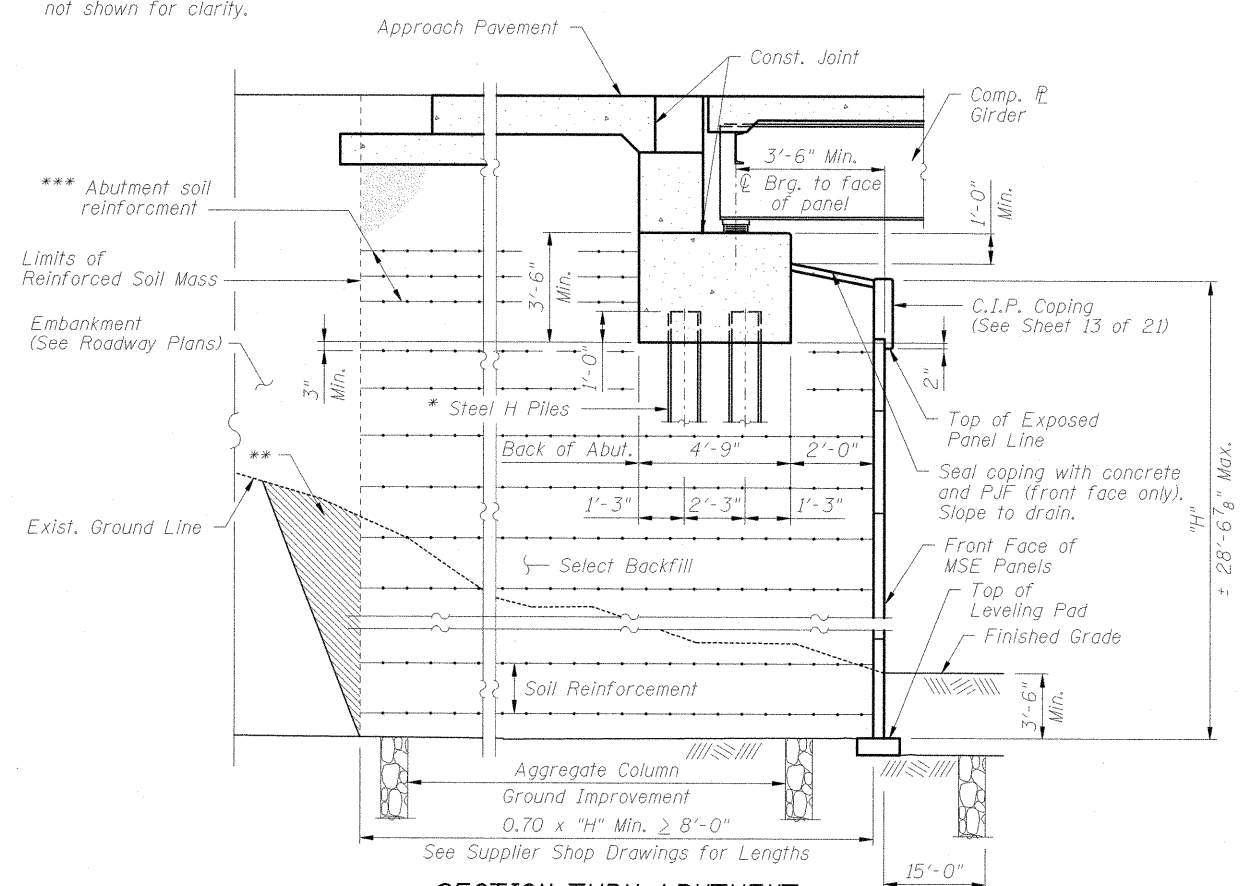
\*\* Backfill overexcavation with same material as used for select fill.

**MSE WALL FINISH**

The wall panels shall be textured with an approved Ashlar Stone Form Liner with max. depth of relief of 1-1/2". Panel color shall be Federal Standard Color 10266 (Tan).

The following is a list of Ashlar Stone Form Liner Systems which may be used.

List of Approved Ashlar Stone Form Liner Systems	
"Ashlar Stone" (Scott System, Inc.) Pattern No. 167	
"Georgetown Ashlar Stone" (Fitzgerald Formliners) Pattern No. 16986	
"Ashlar Stone" (Greenstreak) Pattern No. 330	
"Southwest Ashlar Stone" (Dayton Superior/Symons) Pattern No. 1515	



**SECTION THRU ABUTMENT**  
 (Horiz. Dim. @ Rt. <'s)

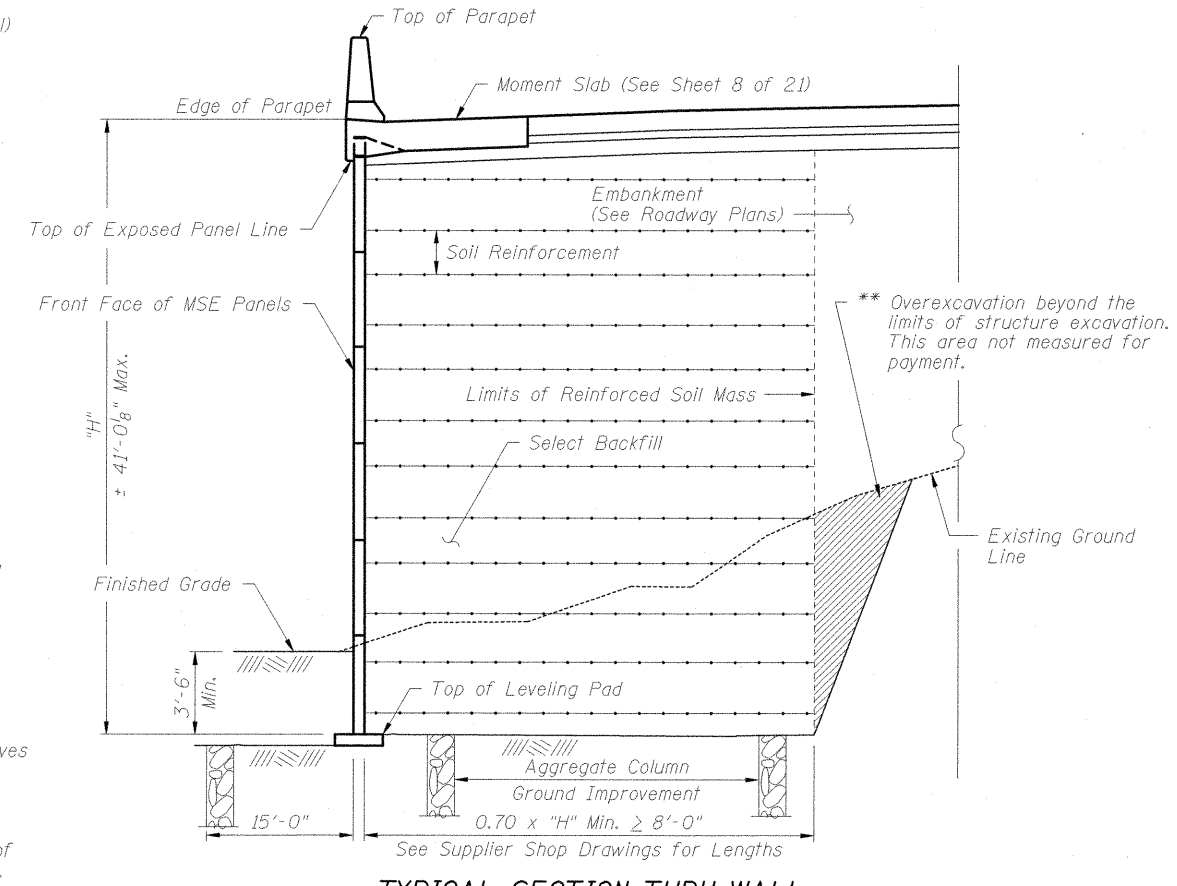
\* If piles are installed without sleeves they shall be driven before construction of the MSE Wall select fill and shall be coated with Bitumen from the bottom of the select fill to 1" above the bottom of the abutment cap. The cost of the Bitumen coating shall be included with the pay item for furnishing piles.

Alternately, the Contractor may install sleeves around the piles in lieu of coating with Bitumen. The annulus between the pile and the sleeve shall be filled with loose dry sand after construction of the MSE Wall select fill. The cost of furnishing, installing, and filling the pile sleeves shall be included with the pay item for furnishing piles.

See S.N. 100-0095 & S.N. 100-0096 for details.

\*\* Overexcavation beyond structure excavation and removal of unsuitable material. This area not measured for payment. Backfill overexcavation with select fill used in MSE wall.

\*\*\* The MSE wall supplier shall design the abutment soil reinforcement to resist a horizontal force of 6.1 kips/ft. of abutment.

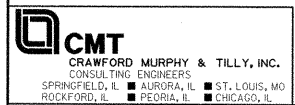


**TYPICAL SECTION THRU WALL**

Sta. 1748+27.21 (South Wall) to Sta. 1752+14.42 (South Wall)  
 Sta. 1747+15.80 (North Wall) to Sta. 1752+14.42 (North Wall)

\*\*\* Overexcavation beyond the limits of structure excavation. This area not measured for payment.

\*\* Backfill overexcavation with same material as used for select fill.



FILE NAME = L:\1007\0906603\Draw\CADD_Sheets\STRUCTURAL PLANS\MSE WALLS\100-W002\100W002-98859-006-Elevs_Sections.dgn	USER NAME = Gary Davis	DESIGNED - JMW	REVISED -
		CHECKED - REB	REVISED -
		DRAWN - AJK	REVISED -
		CHECKED - REB	REVISED -

**STATE OF ILLINOIS**  
**DEPARTMENT OF TRANSPORTATION**

**WALL ELEVATIONS AND SECTIONS**  
**STRUCTURE NO. 100-W002**  
 SHEET NO. 6 OF 21 SHEETS

F.A.P. RTE.	SECTION	COUNTY	TOTAL SHEETS	SHEET NO.
331	(1X-1) VB-1, B-1, N-4, R-3	WILLIAMSON	367	262
CONTRACT NO. 98859				

ILLINOIS FED. AID PROJECT