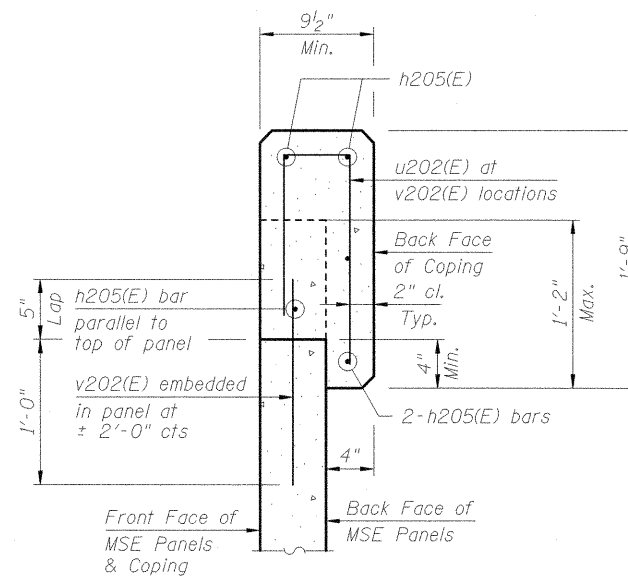
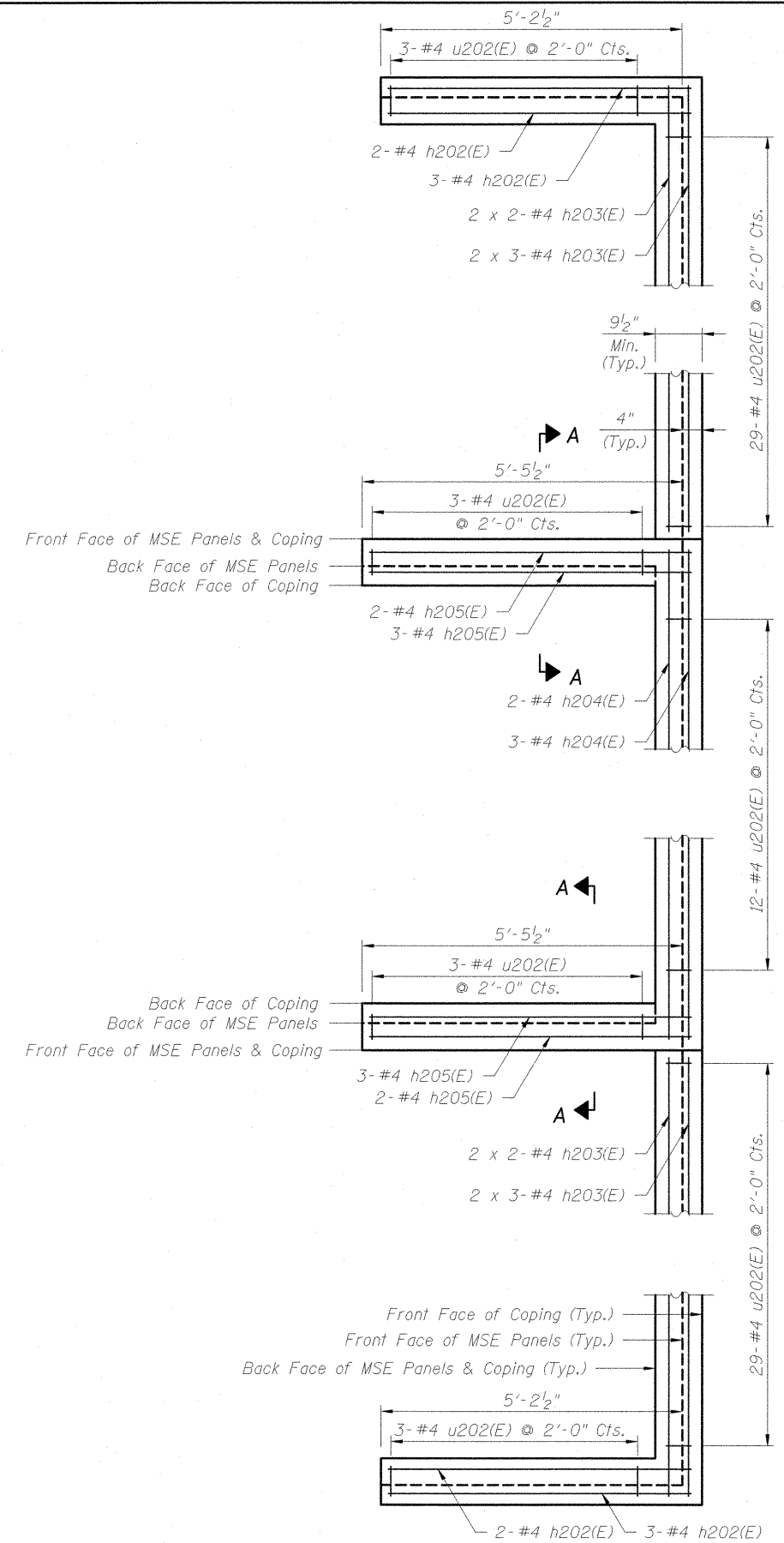


TYPICAL SECTION THRU COPING



SECTION A-A

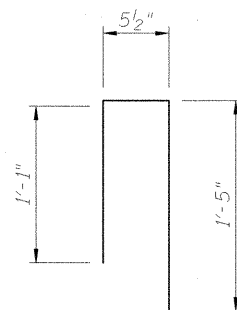


C.I.P. COPING
BILL OF MATERIAL

| Bar | No. | Size | Length | Shape | Location |
|----------------------------------|-----|---------|-----------|-------|----------------------------|
| h200(E) | 15 | #4 | 27'-0" | — | North Wall @ S.N. 100-0093 |
| h201(E) | 15 | #4 | 27'-0" | — | South Wall @ S.N. 100-0094 |
| h202(E) | 10 | #4 | 5'-1" | — | Abutment |
| h203(E) | 20 | #4 | 30'-0" | — | Abutment |
| h204(E) | 5 | #4 | 24'-4" | — | Abutment |
| h205(E) | 10 | #4 | 5'-5" | — | Abutment |
| u200(E) | 39 | #4 | 2'-1 1/2" | — | North Wall @ S.N. 100-0093 |
| u201(E) | 39 | #4 | 2'-1 1/2" | — | South Wall @ S.N. 100-0094 |
| u202(E) | 82 | #4 | 2'-1 1/2" | — | Abutment |
| v200(E) | 39 | #4 | 1'-5" | — | North Wall @ S.N. 100-0093 |
| v201(E) | 39 | #4 | 1'-5" | — | South Wall @ S.N. 100-0094 |
| v202(E) | 82 | #4 | 1'-5" | — | Abutment |
| Concrete Superstructure | | Cu. Yd. | 14.2 | | |
| Reinforcement Bars, Epoxy Coated | | Lb. | 1,570 | | |

For information purposes only.

Cost of C.I.P. Coping will be included for payment in the contract unit price for Mechanically Stabilized Earth Retaining Wall.

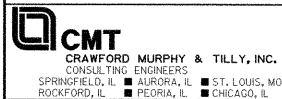


BAR u200(E), u201(E), u202(E)

MINIMUM BAR LAPS

| Bar | Lap |
|-----|-------|
| #4 | 2'-3" |

Reinforcement bars designated (E) shall be epoxy coated.



FILE NAME = L:\IDOT\0986683\Draw\CADD_Sheets\ STRUCTURAL PLANS\MSE WALLS\ 100-W002\ 100W002-98859-013-Coping.dgn

USER NAME = Gary Davis
PLOT SCALE = 1.0000' / IN.
PLOT DATE = 1/10/2012

DESIGNED - JMW
CHECKED - REB
DRAWN - AJK
CHECKED - REB

REVISED -
REVISED -
REVISED -
REVISED -

STATE OF ILLINOIS
DEPARTMENT OF TRANSPORTATION

C.I.P. COPING REINFORCING DETAILS
STRUCTURE NO. 100-W002

SHEET NO. 13 OF 21 SHEETS

| F.A.P. RTE. | SECTION | COUNTY | TOTAL SHEETS | SHEET NO. |
|-------------|----------------------------|------------|--------------|--------------------|
| 331 | (IX-1) VB-1, B-1, N-4, R-3 | WILLIAMSON | 367 | 269 |
| | | | | CONTRACT NO. 98859 |

ILLINOIS FED. AID PROJECT