

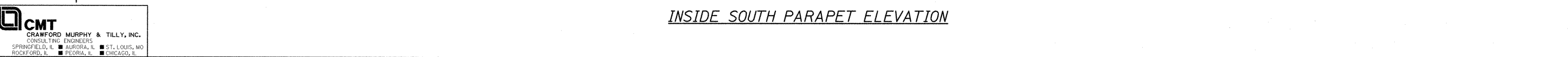
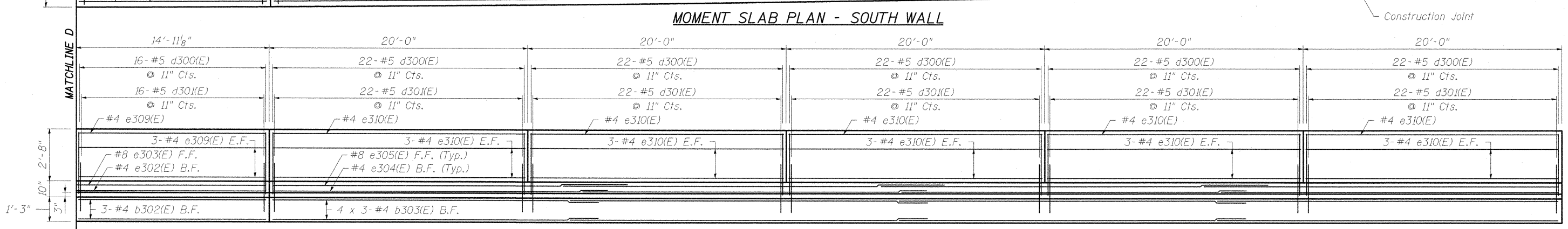
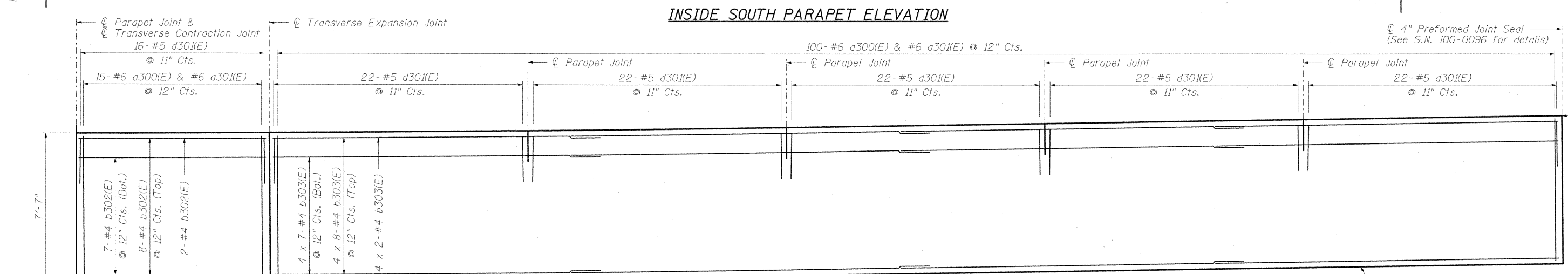
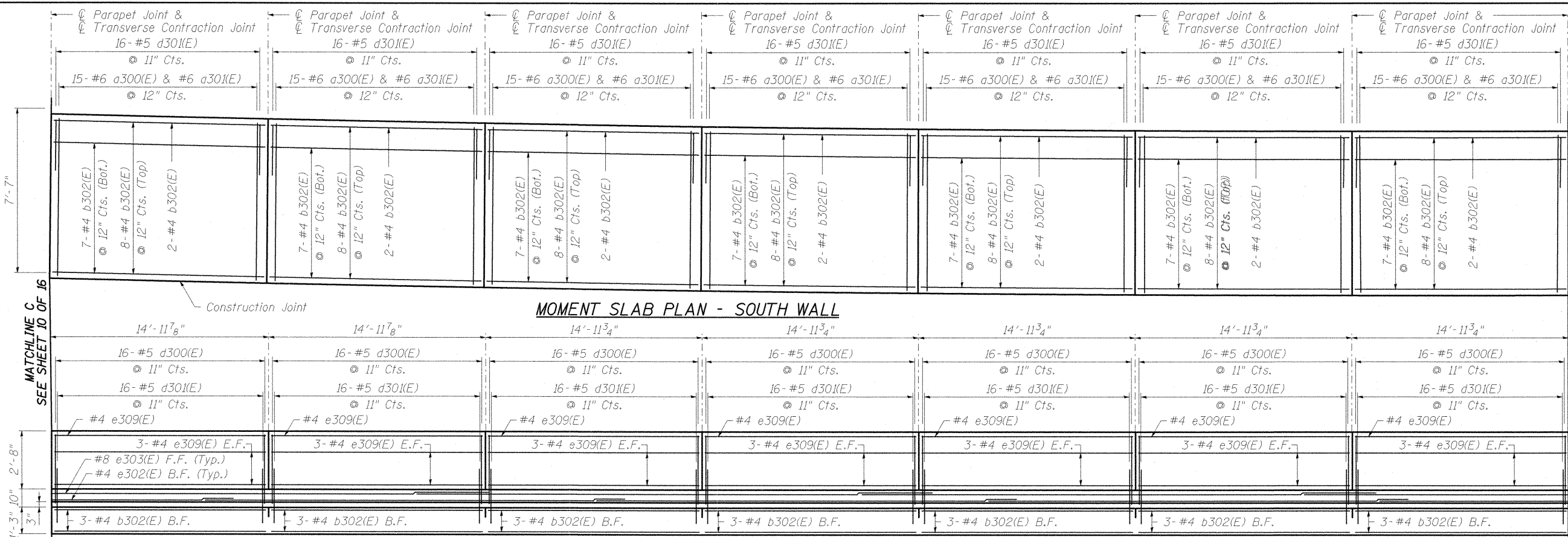
**MINIMUM BAR LAPS**

Bar	Lap
#4 (Moment Slab)	2'-3"
#4 (Parapet)	2'-0"
#8 (Parapet)	5'-2"

Reinforcement bars designated (E) shall be epoxy coated.

See sheet 8 of 16 for joint details.

Longitudinal dimensions are measured horizontally along the back of the parapet.



FILE NAME = L:\1007\0906603\Draw\CADD\_Sheets\STRUCTURAL PLANS\MSE WALLS\100-W003\100W003-98859-011-S\_Parapet\_Elev.dgn

USER NAME = Gary Davis	DESIGNED - JMW	REVISD -
PLOT SCALE = 1/8" = 1'-0"	CHECKED - REB	REVISD -
PLOT DATE = 1/10/2012	DRAWN - AJK	REVISD -
	CHECKED - REB	REVISD -

**STATE OF ILLINOIS  
DEPARTMENT OF TRANSPORTATION**

**JOINT AND REINFORCING DETAILS  
STRUCTURE NO. 100-W003**

SHEET NO. 11 OF 16 SHEETS

F.A.P. RTE. 331	SECTION (1X-1) VB-1, B-1, N-4, R-3	COUNTY WILLIAMSON	TOTAL SHEETS 367	SHEET NO. 288
CONTRACT NO. 98859			ILLINOIS FED. AID PROJECT	