

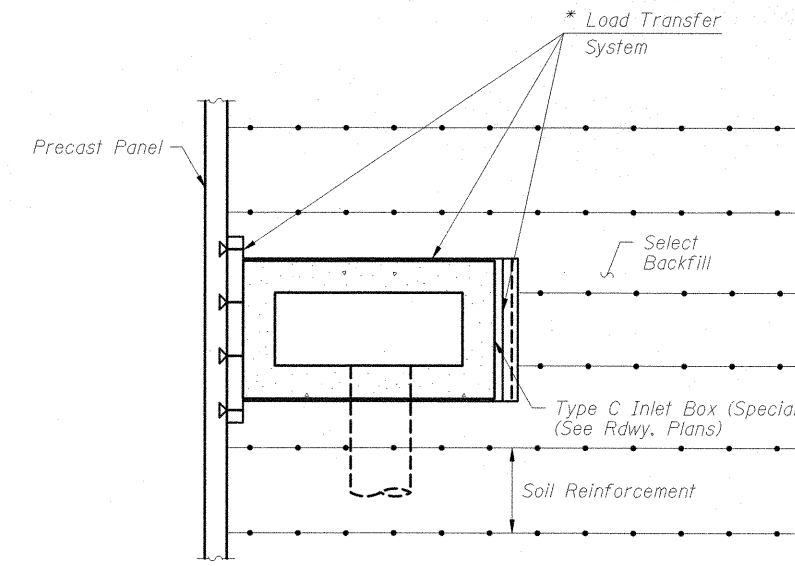
| Sta.       | Location   | A                        | B      |
|------------|------------|--------------------------|--------|
| 1757+15.00 | 75.74' Rt. | 452.57                   | 452.07 |
| 1758+65.00 | 79.72' Rt. | 448.36 (W)<br>448.26 (E) | 447.46 |

\* M.S.E. supplier to design load transfer system to accommodate concrete pipe and inlet box.

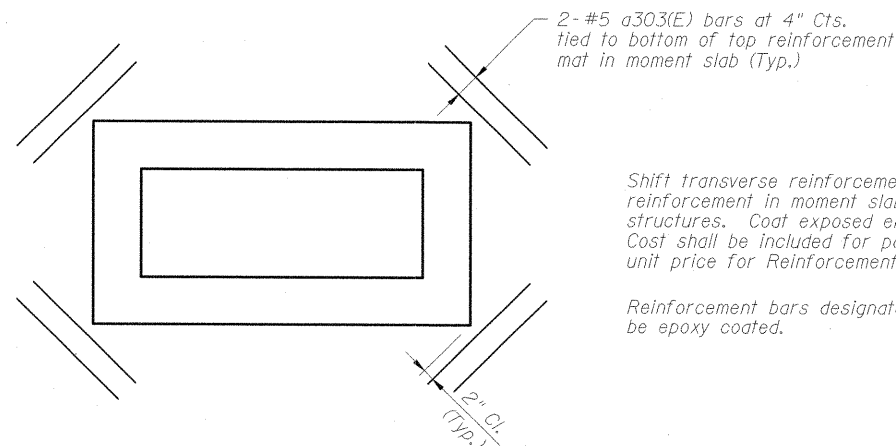
Reinforcing in moment slab, parapet and drainage structure not shown for clarity.

**LOAD TRANSFER SYSTEM  
AROUND DRAINAGE DETAIL**

Sta. 1757+15.00 (South Wall)  
Sta. 1758+65.00 (South Wall)



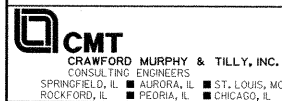
**SECTION A-A**



Shift transverse reinforcement and cut longitudinal reinforcement in moment slab to clear drainage structures. Coat exposed ends with epoxy paint. Cost shall be included for payment in the contract unit price for Reinforcement Bars, Epoxy Coated.

Reinforcement bars designated (E) shall be epoxy coated.

**REINFORCEMENT AROUND DRAINAGE STRUCTURE**



FILE NAME = L:\001\0906603\Draw\CADD\_Sheets\STRUCTURAL PLANS\MSE WALLS\100-W003\100W003-98859-014-Drainage.dgn

USER NAME = Gary Davis  
PLOT SCALE = 1.0000' / IN.  
PLOT DATE = 1/10/2012

DESIGNED - JMW  
CHECKED - REB  
DRAWN - AJK  
CHECKED - REB

REVISED -  
REVISED -  
REVISED -  
REVISED -

**STATE OF ILLINOIS  
DEPARTMENT OF TRANSPORTATION**

**LOAD TRANSFER SYSTEM  
STRUCTURE NO. 100-W003**

SHEET NO. 14 OF 16 SHEETS

| F.A.P. RTE. | SECTION                    | COUNTY     | TOTAL SHEETS       | SHEET NO. |
|-------------|----------------------------|------------|--------------------|-----------|
| 331         | (IX-1) VB-1, B-1, N-4, R-3 | WILLIAMSON | 367                | 291       |
|             |                            |            | CONTRACT NO. 98859 |           |

ILLINOIS FED. AID PROJECT