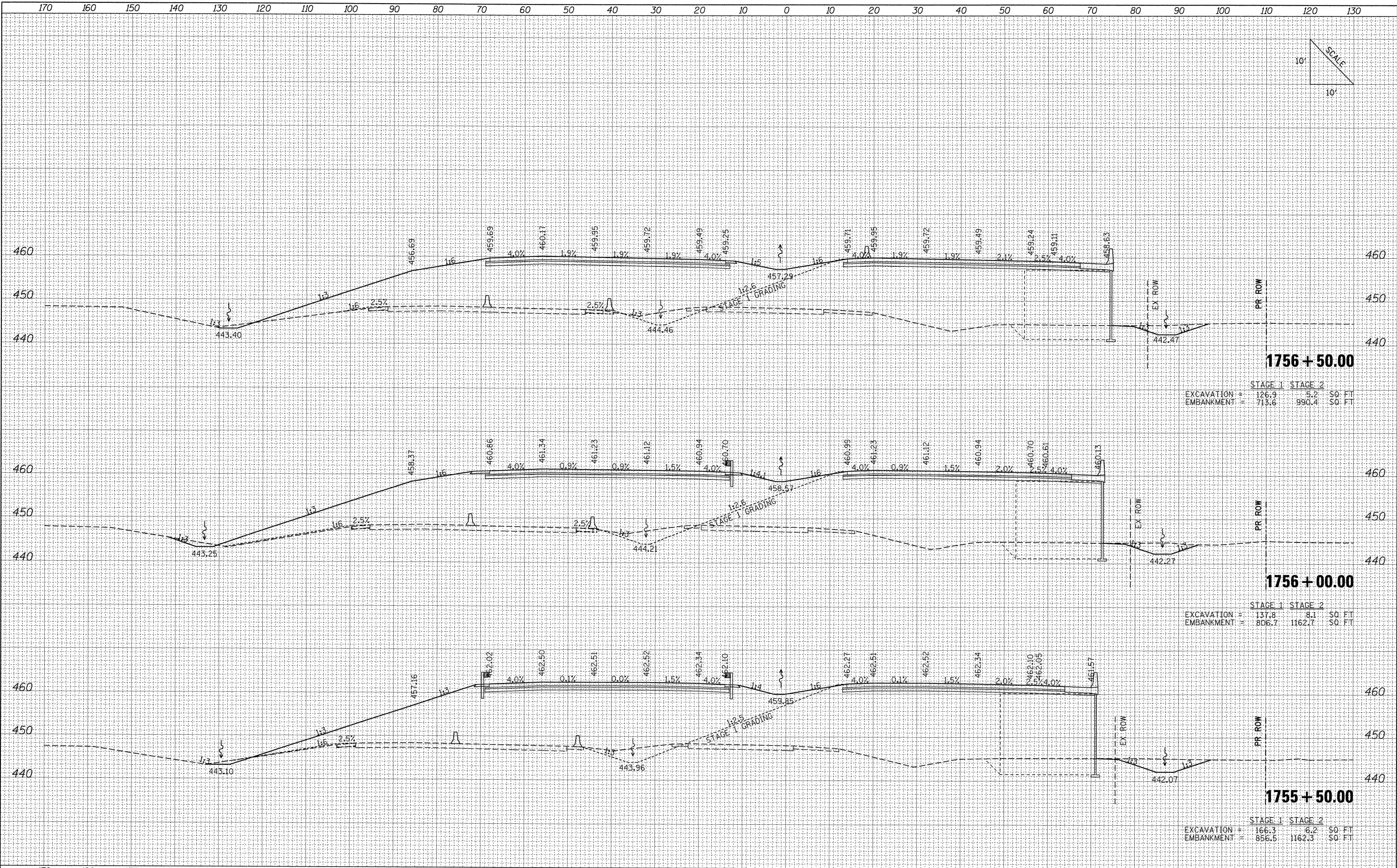
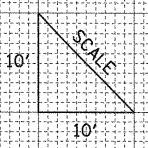


FINAL SURVEY	DATE
SURVEYED	BY
NOTE BOOK	NO.
TEMPLATE	
AREAS CHECKED	

ORIGINAL SURVEY	DATE
SURVEYED	BY
NOTE BOOK	NO.
TEMPLATE	
AREAS CHECKED	



1756 + 50.00

STAGE 1	STAGE 2
EXCAVATION = 126.9	5.2 \$0 FT
EMBANKMENT = 713.6	990.4 \$0 FT

1756 + 00.00

STAGE 1	STAGE 2
EXCAVATION = 137.8	8.1 \$0 FT
EMBANKMENT = 806.7	1162.7 \$0 FT

1755 + 50.00

STAGE 1	STAGE 2
EXCAVATION = 166.3	6.2 \$0 FT
EMBANKMENT = 856.5	1162.3 \$0 FT

FILE NAME =	USER NAME = Matt Overbey	DESIGNED -	REVISED -	STATE OF ILLINOIS DEPARTMENT OF TRANSPORTATION	PROPOSED CROSS SECTIONS IL ROUTE 13				F.A. RTE.	SECTION	COUNTY	TOTAL SHEETS	SHEET NO.
1:\dot\0906603\dr\aw\cadd\sheet\0998859-sht-11.dgn		DRAWN -	REVISED -		331	(1X-1) VB-1, B-1, N-4, R-3	WILLIAMSON	367	327				
PLOT SCALE = 10.0000' / IN.		CHECKED -	REVISED -		SCALE: SHEET NO. OF SHEETS STA. TO STA.				CONTRACT NO. 98859				
PLOT DATE = 12/13/2011		DATE - 12/9/11	REVISED -		ILLINOIS FED. AID PROJECT								