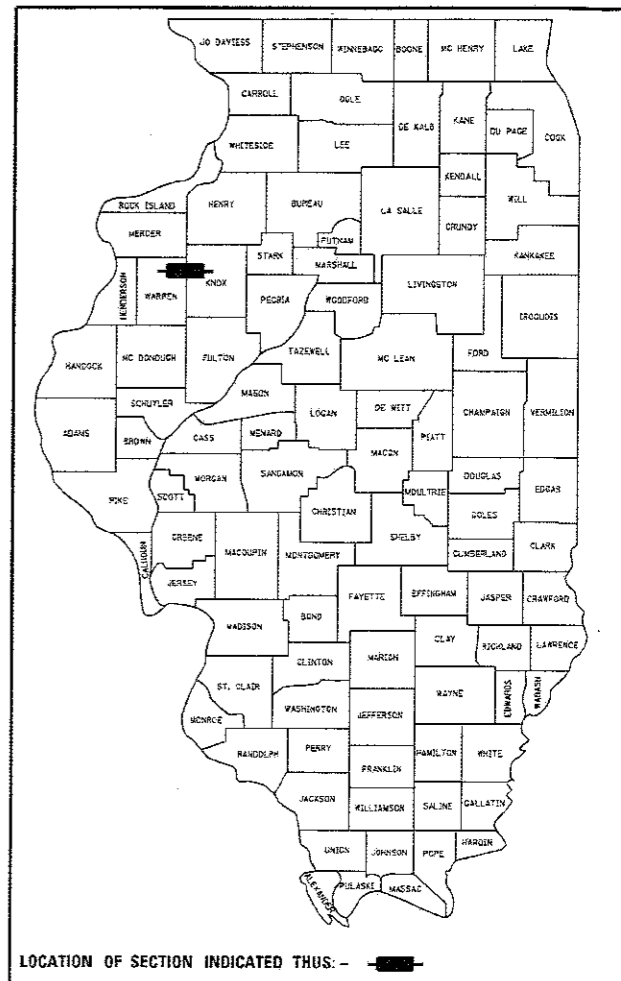


FAP	SECTION	COUNTY	TOTAL SHEETS	SHEET NO.
313	94(16, 16-1, 17)RS, 48(17, 18)RS	Warren/Knox	118	1
RTE US 34/IL 110		ILLINOIS	CONTRACT NO. 68339	

STATE OF ILLINOIS  
DEPARTMENT OF TRANSPORTATION  
DIVISION OF HIGHWAYS

\*DELETING PAGES 110-113  
114 TOTAL PAGES

D-94-033-03



# PROPOSED HIGHWAY PLANS

ROUTE US 34 /IL 110 FAP 313  
SECTION 94(16, 16-1, 17)RS, 48(17, 18)RS  
PROJECT NHPP-QBQZ(237)  
TYPE of IMPROVEMENT: Resurfacing & Bridge Rehabilitation  
COUNTY WARREN /KNOX

C-94-035-03

JOB ENDS  
STA. 363+90

INDEX OF SHEETS

- 1 COVER SHEET
- 2-3 GENERAL /JOB SPECIFIC NOTES
- 4-11 SUMMARY OF QUANTITIES
- 12-17 TYPICAL SECTIONS
- 18-29 SCHEDULE OF QUANTITIES
- 30 LINE DIAGRAM
- 31 UNDER STRUCTURE DETAIL
- 32-34 BUTT JOINTS DETAIL
- 35-38 MEDIAN CROSSOVER DETAIL
- 39-40 UNDERDRAIN OUTLET PROTECTION DETAIL
- 41 CLASS D PATCHES (SPECIAL)
- 42 CENTER JOINT FILLING & HMA SURFACE REMOVAL VARIABLE DEPTH DETAIL
- 43-46 DRAINAGE DETAILS
- 47 RIPRAP DITCH FOR EROSION PROTECTION DETAIL
- 48 PROPOSED LIGHT POLE DETAIL
- 49-51 DETOUR SHEETS
- 52-72 EXISTING PLAN AND PROFILE SHEETS
- 73-89 BRIDGE REHABILITATION PLANS 048-0073 & 048-0074
- 90-107 BRIDGE REHABILITATION PLANS 048-0076 & 048-0077
- \* 108-118 DISTRICT STANDARDS \*DELETING PAGES 110-113

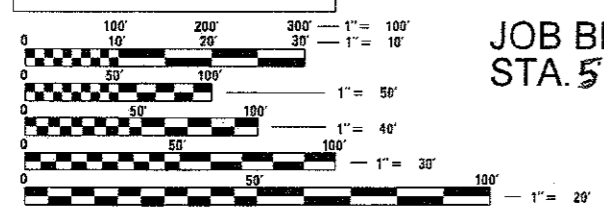
HIGHWAY STANDARDS

442001-04	642001-02	701422-10	821101-02
442201-03	667101-02	701901-07	830021-02
601001-05	701006-05	720011-01	838001-01
604106-01	701011-04	728001-01	
630001-12	701101-05	729001-01	
631011-10	701106-02	780001-05	
631026-06	701400-09	781001-04	
631031-15	701401-11		

DESIGN DESIGNATION: Class I Route  
2015 ADT = 9650  
MU = 11.48%  
SU = 6.15%  
Other Principal Arterial

CADD STANDARDS

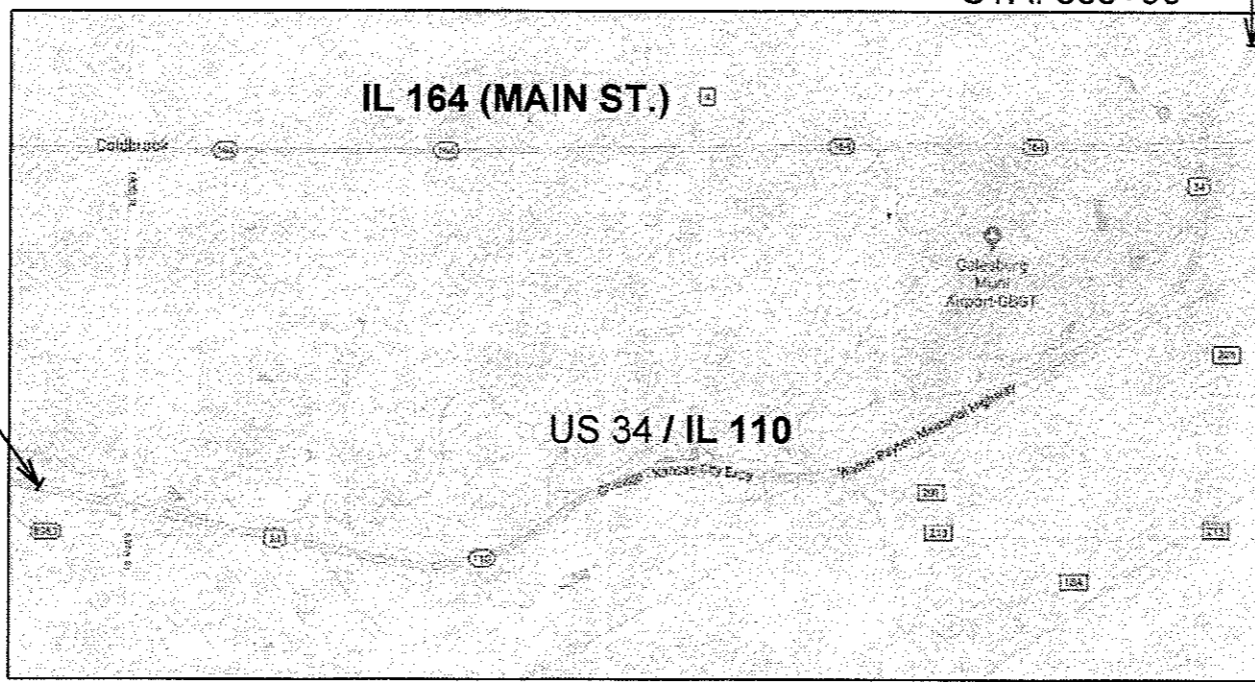
604101-D4	630101-D4
604201-D4	635001-D4
630011-D4	780001-D4



FULL SIZE PLANS HAVE BEEN PREPARED USING STANDARD ENGINEERING SCALES. REDUCED SIZED PLANS WILL NOT CONFORM TO STANDARD SCALES. IN MAKING MEASUREMENTS ON REDUCED PLANS, THE ABOVE SCALES MAY BE USED.

J.U.L.I.E.  
JOINT UTILITY LOCATION INFORMATION FOR EXCAVATION  
1-800-892-0123  
OR 811

PROJECT ENGINEER: Christopher Maushard 309-671-3453  
PROJECT MANAGER: George Elias 309-671-3467  
Michael Hudelson 309-671-3466  
CONTRACT NO. 68339  
CATALOG NO. 032725-01D



DESCRIPTION OF WORK:  
This project consists of an HMA overlay on US 34/IL 110 Mainline & Ramps. Variable depth shoulder removal & replacement, Center Joint Filling, Concrete Patching and Pavement Cleaning, New Underdrain Installation and Bridge Rehabilitation.

GROSS LENGTH = 38544 FT. = 7.30 MILE  
NET LENGTH = 38544 FT. = 7.30 MILE

Sta. Equa. 712+50 (BK) = 710+00 (AH)  
EB Sta. Equa. 898+97.33 (BK) = 330+50 (AH)  
WB Sta. Equa. 897+98.26 (BK) = 330+50 (AH)  
Sta. Equa. 343+65 (BK) = 344+67 (AH)

STATE OF ILLINOIS  
DEPARTMENT OF TRANSPORTATION  
DIVISION OF HIGHWAYS

SUBMITTED Dec 14 2017  
Kensil A. Garnett (KSD)  
REGION THREE ENGINEER

Feb 2 2018  
[Signature]  
ENGINEER OF DESIGN AND ENVIRONMENT

Feb 2 2018  
[Signature]  
DIRECTOR OF PROGRAM DEVELOPMENT

PRINTED BY THE AUTHORITY  
OF THE STATE OF ILLINOIS