

STATE OF ILLINOIS
DEPARTMENT OF TRANSPORTATION

F.A.P. RTE.	SECTION	COUNTY	TOTAL SHEETS	SHEET NO.
315/317	33, 109, 18, 102/RS-5;(101)RS-4	* ILLINOIS	13	1
CONTRACT NO. 68D94			* FULTON/ McDONOUGH	

D-94-007-18

INDEX OF SHEETS

- 1 COVER SHEET
- 2 JOB SPECIFIC NOTES & COMMITMENTS
- 3-4 SUMMARY OF QUANTITIES
- 5-6 LINE DIAGRAM
- 7-8 TYPICAL SECTION
- 9-11 SCHEDULE OF QUANTITIES
- 12-13 DISTRICT STANDARDS

HIGHWAY STANDARDS

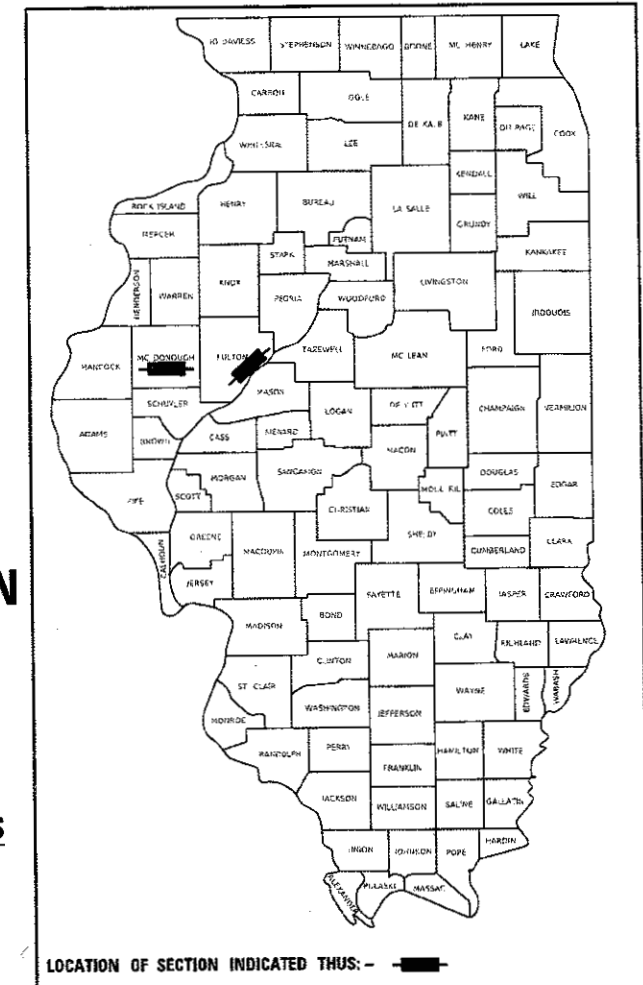
- 701301-04
- 701306-04
- 701311-03
- 701901-07
- 780001-05
- 781001-04

DISTRICT STANDARDS

780001

PROPOSED
HIGHWAY PLANS

FAP ROUTE 315(US 136, IL 100)
FAP ROUTE 317(US 24)
SECTION (33, 109, 18, 102)RS-5;(101)RS-4
PROJECT NHPP-SKW1(917)
TYPE of IMPROVEMENT: PAVEMENT PRESERVATION
FULTON AND McDONOUGH COUNTY



PROJECT DESCRIPTION

MICRO SURFACING ON US 136 FROM E OF US 67 TO W OF IL 41; US 136/US 24/IL 100 FROM E BACK RD TO US 136(E) AND US 24 FROM LITTLE AMERICA TO BANNER CAPE SEAL ON US 136 FROM VERMONT RD TO E OF SUMMUM RD.

STATE OF ILLINOIS
DEPARTMENT OF TRANSPORTATION

SUBMITTED Dec 15 2017
Ronald A. Barnett (ICSD)
REGION THREE ENGINEER

Feb 2 2018
[Signature]
ENGINEER OF DESIGN AND ENVIRONMENT

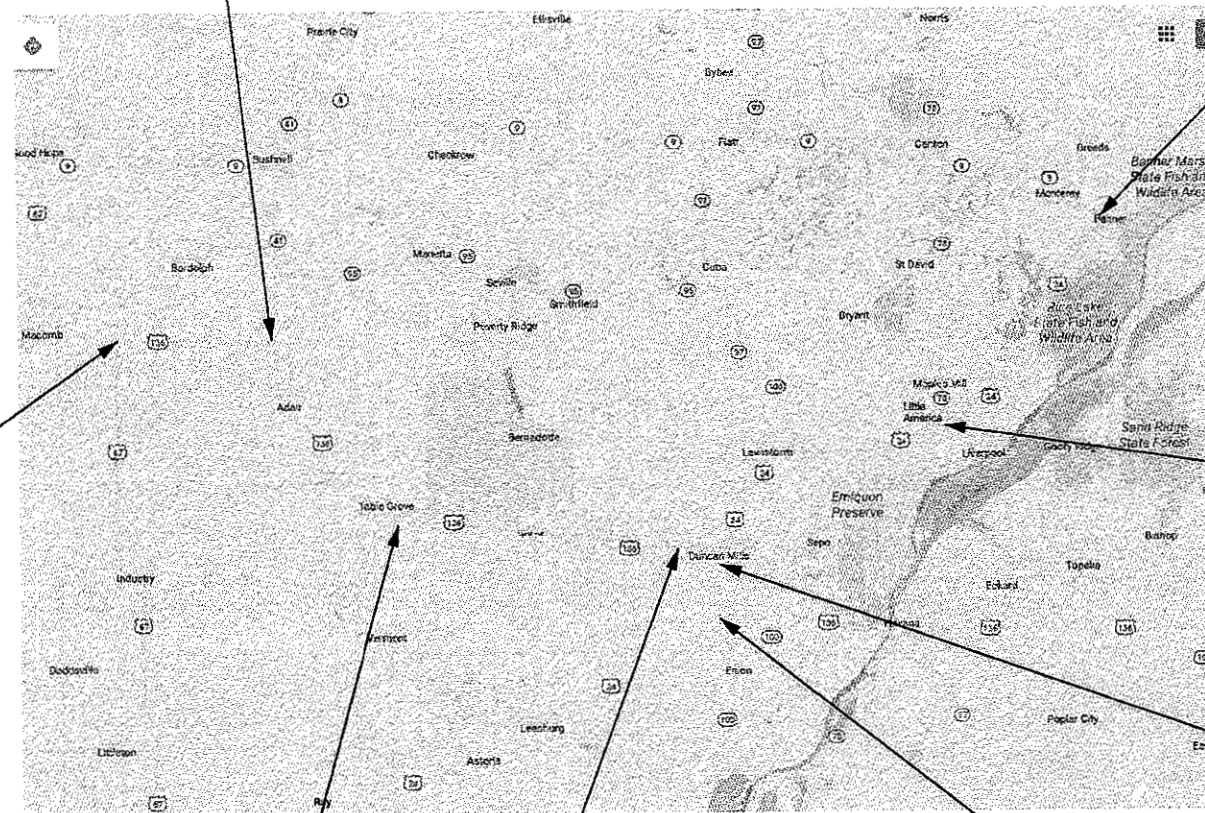
Feb 2 2018
[Signature]
DIRECTOR OF PROGRAM DEVELOPMENT

PRINTED BY THE AUTHORITY
OF THE STATE OF ILLINOIS

PROJECT ENDS
STA 297+75

C-94-009-18

PROJECT BEGINS
STA 14+10



PROJECT BEGINS
STA 9+55

PROJECT ENDS
STA 1346+00

PROJECT BEGINS
STA 131+62

PROJECT BEGINS
STA 475+64

PROJECT ENDS
STA 504+48

GROSS LENGTH

NET LENGTH

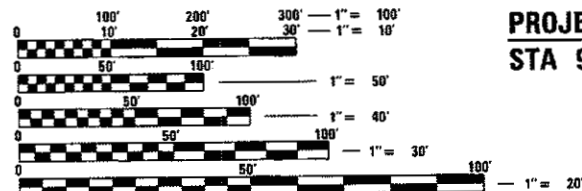
PROJECT ENDS
STA 203+12

- LOCATION 1: 28774.70 FT.=5.450 MILE
- LOCATION 2: 50343.00 FT.=9.535 MILE
- LOCATION 3: 7150.00 FT.=1.354 MILE
- LOCATION 4: 53669.29 FT.=10.165 MILE

- 28774.70 FT.=5.450 MILE
- 50243.00 FT.=9.516 MILE
- 7150.00 FT.=1.354 MILE
- 53228.29 FT.=10.081 MILE

DESIGN DESIGNATION

	ADT	SU	MU
US 136 LOCATION 1	4600	180	225
US 136 LOCATION 2	2150	170	262
US 24/US 136/IL 100 LOCATION 3	2350	120	350
US 24 LOCATION 4	2550	140	160



FULL SIZE PLANS HAVE BEEN PREPARED USING STANDARD ENGINEERING SCALES. REDUCED SIZED PLANS WILL NOT CONFORM TO STANDARD SCALES. IN MAKING MEASUREMENTS ON REDUCED PLANS, THE ABOVE SCALES MAY BE USED.

J.U.L.I.E.
JOINT UTILITY LOCATION INFORMATION FOR EXCAVATION
1-800-892-0123
OR 811

PROJECT ENGINEER: MIKE LEWIS 309-671-3454
PROJECT MANAGER: SOBHI LABABID/RAY SAMARA 309-671-3460
CATALOG# 035531-00D
CONTRACT NO. 68D94

CODE NO.	ITEM	UNIT	TOTAL QUANTITY	CONSTRUCTION CODE	
				MCDONOUGH COUNTY	FULTON COUNTY
				80% FEDERAL 20 1/2 STATE 0005	80% FEDERAL 20 1/2 STATE 0005
40400001	FIBER-MODIFIED ASPHALT CRACK SEALING	FOOT	200		200
40400020	BUMP REMOVAL	EACH	40	5	35
40400113	MICRO-SURFACING, SINGLE PASS, TYPE II, MIXTURE C	SQ YD	293999	95917	198082
40500063	CAPE SEAL, TYPE II, MIXTURE C	SQ YD	165729		165729
67100100	MOBILIZATION	L SUM	1	0.2	0.8
70100460	TRAFFIC CONTROL AND PROTECTION, STANDARD 701306	L SUM	1	0.2	0.8
70300100	SHORT-TERM PAVEMENT MARKING	FOOT	11771	715	11056
70300150	SHORT TERM PAVEMENT MARKING REMOVAL	SQ FT	3923	238	3685
* 78001100	PAINT PAVEMENT MARKING - LETTERS AND SYMBOLS	SQ FT	288		288
* 78001110	PAINT PAVEMENT MARKING - LINE 4"	FOOT	702844	132330	570514
* 78001180	PAINT PAVEMENT MARKING - LINE 24"	FOOT	216		216
* 78100100	RAISED REFLECTIVE PAVEMENT MARKER	EACH	1117	360	757
78300200	RAISED REFLECTIVE PAVEMENT MARKER REMOVAL	EACH	1117	360	757
X0327980	PAVEMENT MARKING REMOVAL - WATER BLASTING	SQ FT	73095	22055	51040

* SPECIALTY ITEM

* FULTON/ MCDONOUGH

FILE NAME =	USER NAME = jebecidmm	DESIGNED -	REVISED -
S:\GEN\DRAWING\STD\PLNS\SQUAD 8\Micro-traffic 2018.68094\plans.dgn		DRAWN -	REVISED -
	PLOT SCALE = 100.0000' / 1"	CHECKED -	REVISED -
	PLOT DATE = 12/14/2017	DATE -	REVISED -

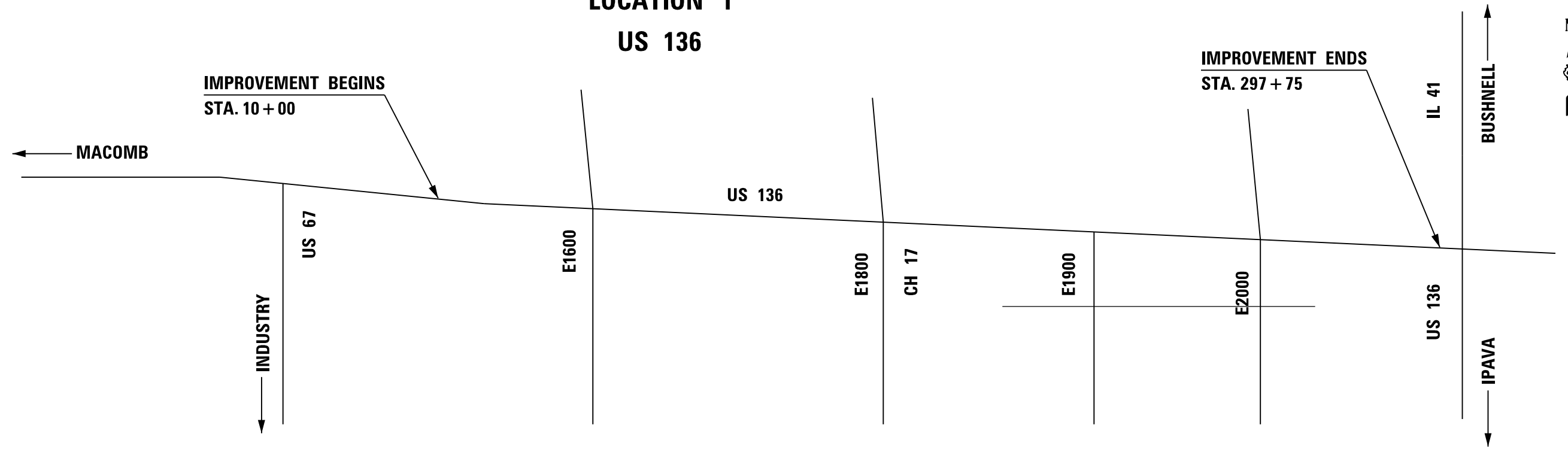
STATE OF ILLINOIS
DEPARTMENT OF TRANSPORTATION

SUMMARY OF QUANTITIES

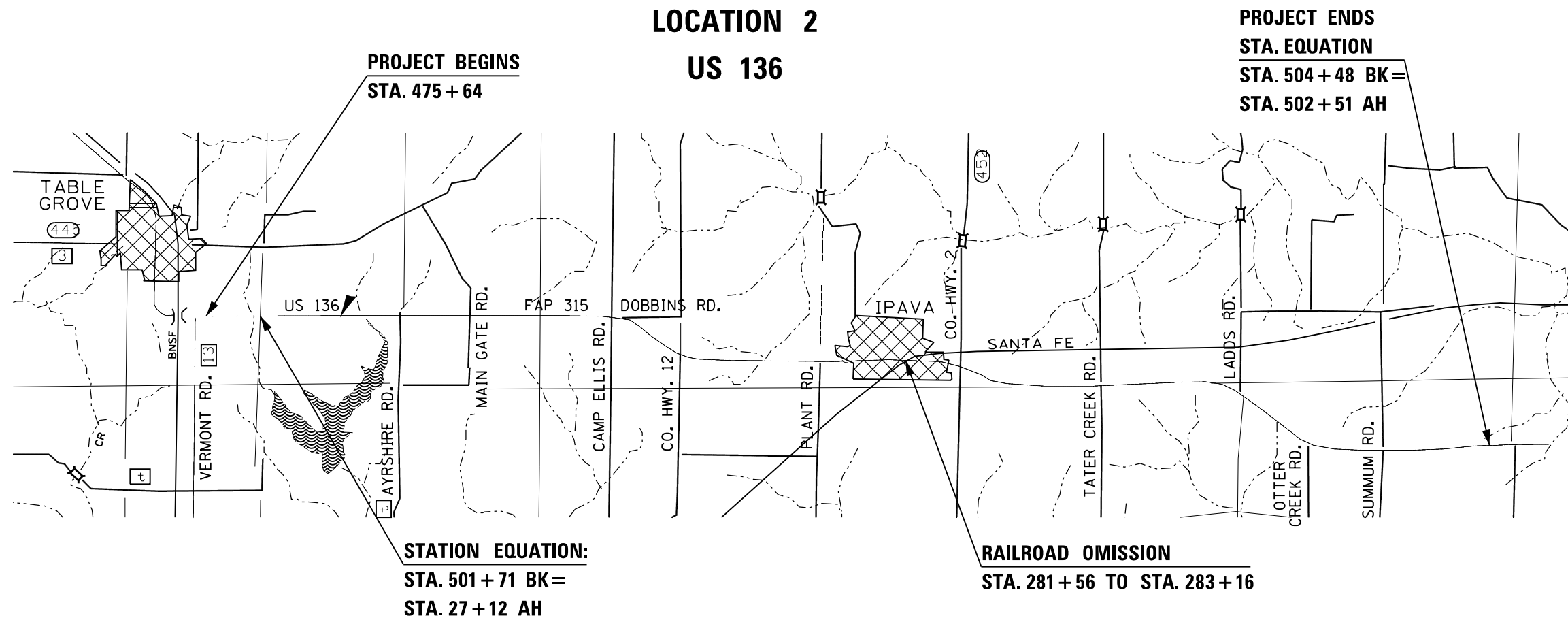
F.A.P. RTE.	SECTION	COUNTY	TOTAL SHEETS	SHEET NO.
315/317	(39,109, 18, 102)RS-5(10)RS-4	*	13	3
				CONTRACT NO. 68094
ILLINOIS FED. AID PROJECT				

REV

LOCATION 1
US 136



LOCATION 2
US 136



NOT DRAWN TO SCALE

MODEL: D:\dft\11
FILE NAME: S:\CENDRAFT\STDS\US136\US136.dwg, 2018_68D94\plan.dwg

USER NAME = lababidism	DESIGNED -	REVISED -
	DRAWN -	REVISED -
PLOT SCALE = 100,0000' / in.	CHECKED -	REVISED -
PLOT DATE = 12/14/2017	DATE -	REVISED -

STATE OF ILLINOIS
DEPARTMENT OF TRANSPORTATION

LINE DIAGRAM

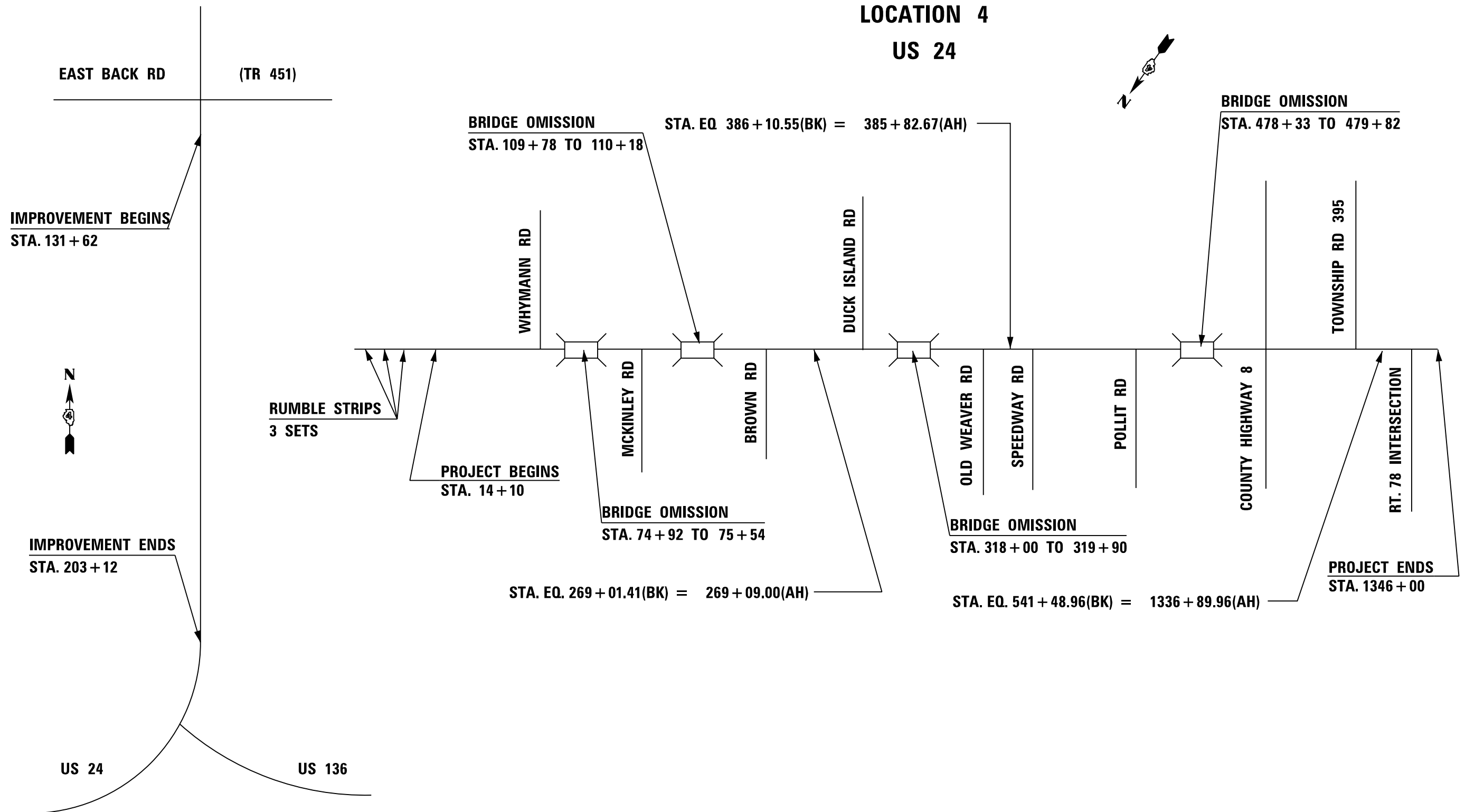
SCALE: SHEET OF SHEETS STA. TO STA.

F.A.P. RTE.	SECTION	COUNTY	TOTAL SHEETS	SHEET NO.
315/317	(33,109, 18, 102)RS-5;(101)RS-4	*	13	5
CONTRACT NO. 68D94				
ILLINOIS FED. AID PROJECT				

* FULTON/ MCDONOUGH

LOCATION 3
US 136 / US 24 / IL 100

LOCATION 4
US 24



NOT DRAWN TO SCALE

MODEL: D:\m\h\...
FILE NAME: S:\CEN\DRIFT\STDS\US136\US24\IL100\68D94\plan.dgn

USER NAME = lababidism	DESIGNED -	REVISED -
	DRAWN -	REVISED -
PLOT SCALE = 100,0000' / in.	CHECKED -	REVISED -
PLOT DATE = 12/14/2017	DATE -	REVISED -

STATE OF ILLINOIS
DEPARTMENT OF TRANSPORTATION

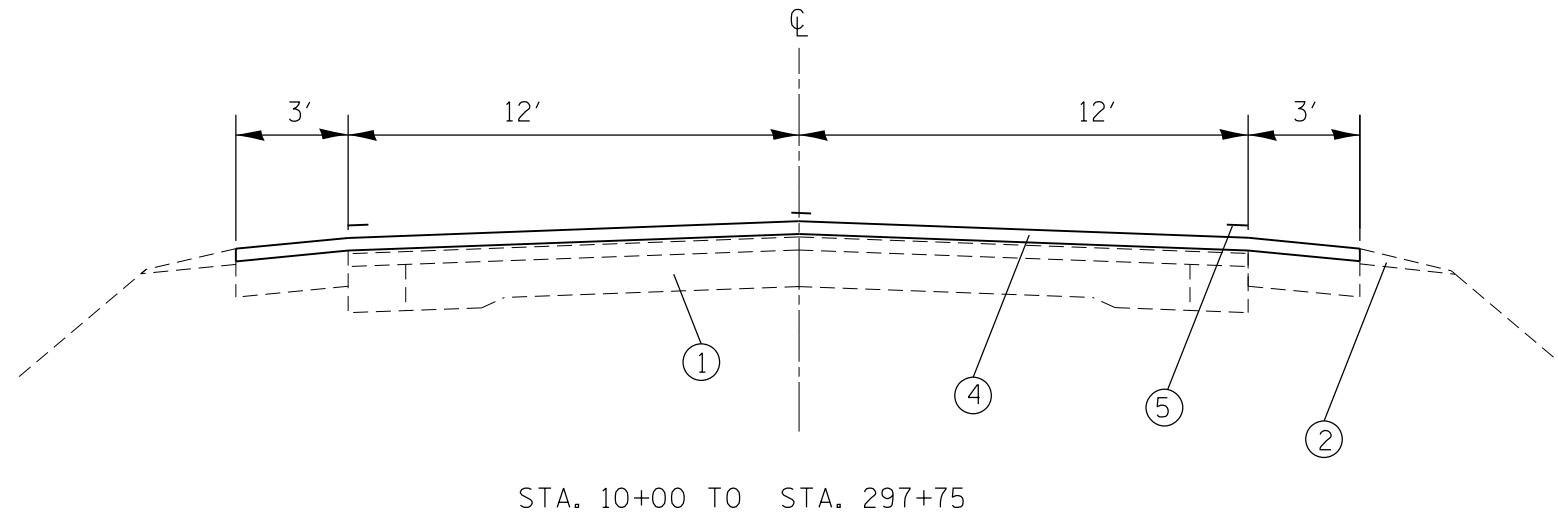
LINE DIAGRAM

SCALE: SHEET OF SHEETS STA. TO STA.

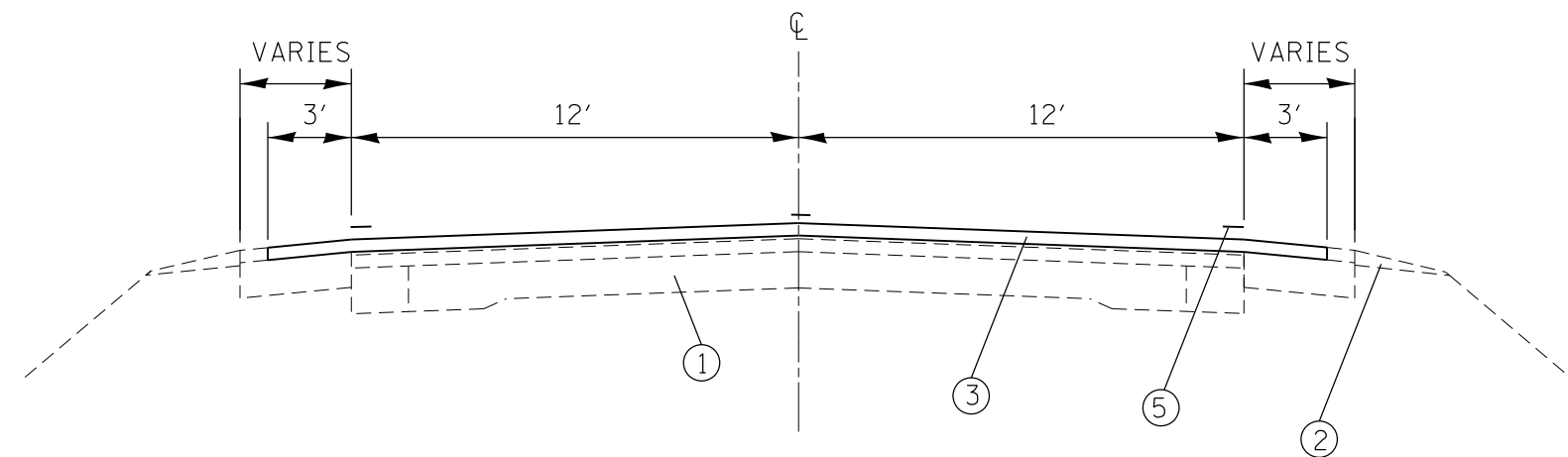
F.A.P. RTE.	SECTION	COUNTY	TOTAL SHEETS	SHEET NO.
315/317	(33,109, 18, 102)RS-5;(101)RS-4	*	13	6
CONTRACT NO. 68D94				
ILLINOIS FED. AID PROJECT				

* FULTON/ McDONOUGH

**LOCATION 1
US 136**



**LOCATION 2
US 136**



LEGEND

1. EXISTING PAVEMENT & OVERLAYS
2. EXISTING AGGREGATE SHOULDER
3. PROPOSED CAPE SEAL
4. PROPOSED MICROSURFACING
5. PROPOSED PAVEMENT MARKING

STA. 475+64 TO STA. 501+71(BK)
 STA. 27+12(AH) TO STA. TO 281+56
 RAILROAD OMISSION
 STA. 286+16 TO STA. 504+48

NOT DRAWN TO SCALE

MODEL: D:\m\h\... FILE NAME: S:\CADD\PROJECTS\US136\US136.dwg, 2018_68D94\plan.dwg

USER NAME = lababidism	DESIGNED -	REVISED -
	DRAWN -	REVISED -
PLOT SCALE = 100.0000' / in.	CHECKED -	REVISED -
PLOT DATE = 12/14/2017	DATE -	REVISED -

**STATE OF ILLINOIS
DEPARTMENT OF TRANSPORTATION**

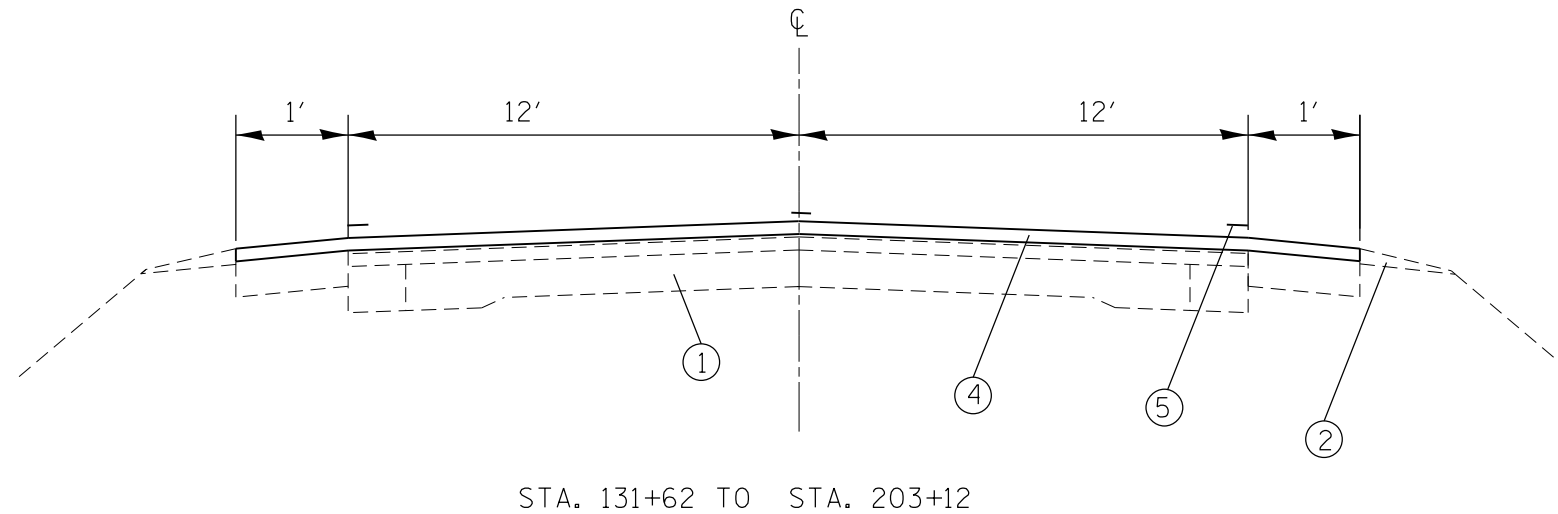
PROPOSED TYPICAL SECTION

SCALE: SHEET OF SHEETS STA. TO STA.

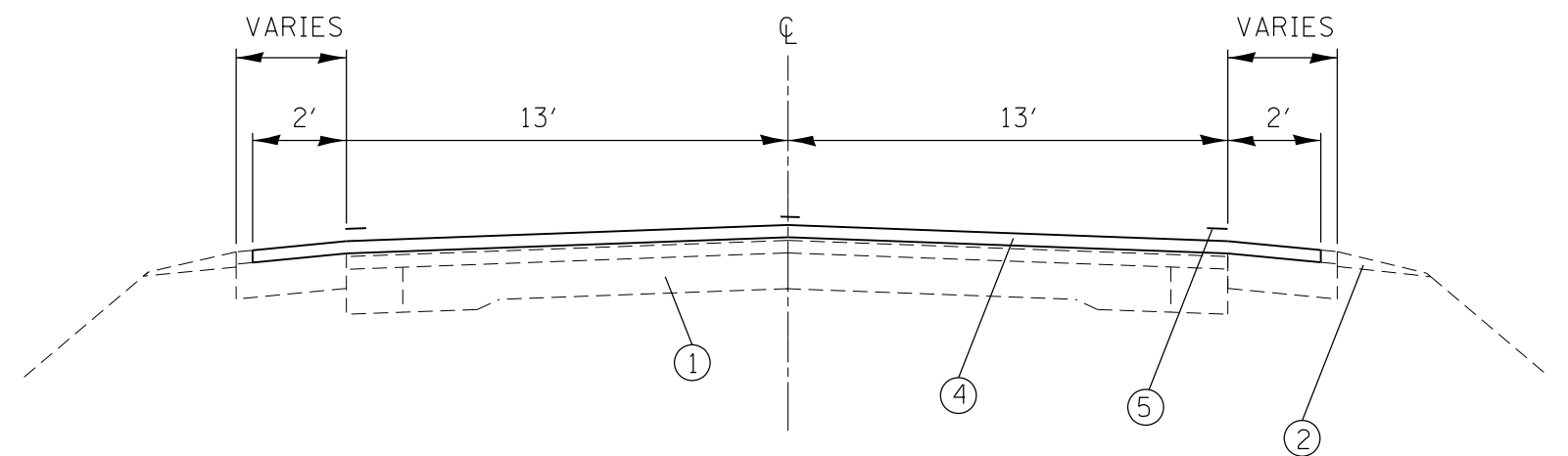
F.A.P. RTE.	SECTION	COUNTY	TOTAL SHEETS	SHEET NO.
315/317	(33.109, 18, 102)RS-5:(101)RS-4	*	13	7
CONTRACT NO. 68D94				

ILLINOIS FED. AID PROJECT * FULTON/ McDONOUGH

LOCATION 3
US 136 / US 24 / IL 100



LOCATION 4
US 24



LEGEND

1. EXISTING PAVEMENT & OVERLAYS
2. EXISTING AGGREGATE SHOULDER
3. PROPOSED CAPE SEAL
4. PROPOSED MICROSURFACING
5. PROPOSED PAVEMENT MARKING

NOT DRAWN TO SCALE

MODEL: D:\m\h\... FILE NAME: S:\CENDRAFT\STDSR\US136\US24\IL100\18_68D94\plan.dwg

USER NAME = lababidism	DESIGNED -	REVISED -
	DRAWN -	REVISED -
PLOT SCALE = 100.0000' / in.	CHECKED -	REVISED -
PLOT DATE = 12/14/2017	DATE -	REVISED -

STATE OF ILLINOIS
DEPARTMENT OF TRANSPORTATION

PROPOSED TYPICAL SECTION

SCALE: SHEET OF SHEETS STA. TO STA.

F.A.P. RTE.	SECTION	COUNTY	TOTAL SHEETS	SHEET NO.
315/317	(33.109, 18, 102)RS-5;(101)RS-4	*	13	8
CONTRACT NO. 68D94				
ILLINOIS FED. AID PROJECT				

* FULTON/ McDONOUGH

PAVEMENT MARKING SCHEDULE						
LOCATION	PAINT PAVEMENT MARKING-LINE 4"				PAVEMENT MARKING - LINE 24"	PAVEMENT MARKING, LETTERS & SYMBOLS
	SKIP-DASH YELLOW	SOLID SINGLE YELLOW	SOLID DOUBLE YELLOW	EDGE OF PAVEMENT WHITE	STOP BARS	RAILROAD
	FOOT	FOOT	FOOT	FOOT	FOOT	SQ FT
MCDONOUGH COUNTY						
LOCATION 1 US 136						
STA. 10+00 TO STA. 104+78	2,370			18,456		
STA. 104+78 TO STA. 111+46	167	668		1,336		
STA. 111+46 TO STA. 114+04	65			516		
STA. 114+04 TO STA. 120+90	172	686		1,372		
STA. 120+90 TO STA. 286+15	4,131			33,050		
STA. 286+15 TO STA. 293+00	171	685		1,370		
STA. 293+00 TO STA. 297+75			950			
SUBTOTAL	7,076	2,039	950	56,100		
TOTAL LOCATION 1	66,165					
TOTAL MCDONOUGH COUNTY	66,165					
FULTON COUNTY						
LOCATION 2 US 136						
STA. 475+65 TO STA. 501+71				5,212		
STA. 27+12 TO STA. 504+48				93,560		
STA. 476+64 TO STA. 486+50(LT)		986				
STA. 476+50 TO STA. 501+71	630					
STA. 27+12 TO STA. 93+50	1,660					
STA. 31+75 TO STA. 41+80(RT)		1,006				
STA. 41+80 TO STA. 51+50(LT)		970				
STA. 79+85 TO STA. 93+50(RT)		1,365				
STA. 94+50 TO STA. 108+25(LT)		1,375				
STA. 94+50 TO STA. 169+00	1,870					
STA. 160+25 TO STA. 176+35(RT)		1,610				
STA. 169+00 TO STA. 183+80(LT)		1,480				
STA. 176+35 TO STA. 182+25	150					
STA. 182+25 TO STA. 196+15(RT)		1,390				
STA. 193+15 TO STA. 206+85(LT)		1,370				
STA. 183+80 TO STA. 193+15	240					
STA. 274+75 TO STA. 282+84(RT)		809				
STA. 281+84 TO STA. 289+00(LT)		716				
STA. 196+15 TO STA. 281+84	2,140					
STA. 289+00 TO STA. 302+70(RT)		1,370				
STA. 301+25 TO STA. 310+50(LT)		925				
STA. 282+84 TO STA. 301+25	460					
STA. 392+70 TO STA. 412+50(RT)		1,980				
STA. 404+25 TO STA. 418+90(LT)		1,465				
STA. 302+70 TO STA. 404+25	2,540					
STA. 434+50 TO STA. 447+25(RT)		1,275				
STA. 444+85 TO STA. 459+90		1,505				
STA. 412+50 TO STA. 444+85(LT)	810					
STA. 483+50 TO STA. 488+90(RT)		540				
STA. 491+70 TO STA. 498+00		630				
STA. 447+25 TO STA. 504+48	1,430					
RAILROAD 280+56 TO 284+16					108	144
SUBTOTAL	11,930	22,767		98,772		
TOTAL LOCATION 2	133,469				108	144
LOCATION 3 US 136/ US 24/ IL 100						
STA. 131+62 TO STA. 165+40	850			6,756		
STA. 165+40 TO STA. 174+50		1,140		1,820		
STA. 174+50 TO STA. 182+50		1,000		1,600		
STA. 182+50 TO STA. 195+50	330			2,600		
STA. 195+50 TO STA. 203+12		952		1,524		
SUBTOTAL	1,180	3,092		14,300		
TOTAL LOCATION 3	18,572					

PAVEMENT MARKING SCHEDULE						
LOCATION	PAINT PAVEMENT MARKING-LINE 4"				PAVEMENT MARKING - LINE 24"	PAVEMENT MARKING, LETTERS & SYMBOLS
	SKIP-DASH YELLOW	SOLID SINGLE YELLOW	SOLID DOUBLE YELLOW	EDGE OF PAVEMENT WHITE	STOP BARS	RAILROAD
	FOOT	FOOT	FOOT	FOOT	FOOT	SQ FT
FULTON COUNTY						
LOCATION 4 US 24						
STA. 14+10 TO STA. 54+19	4,674			8,018		
STA. 54+19 TO STA. 64+74(RT)	1,055	1,055		2,110		
STA. 64+74 TO STA. 74+92			2,036	2,036		
BRIDGE OMISSION						
STA. 75+54 TO STA. 79+00			692	692		
STA. 79+00 TO STA. 87+97(LT)	897	897		1,794		
STA. 87+97 TO STA. 109+78	2,181			4,362		
BRIDGE OMISSION						
STA. 110+18 TO STA. 145+73	3,555			7,110		
STA. 145+73 TO STA. 155+76(RT)	1,003	1,003		2,006		
STA. 155+76 TO STA. 157+87			422	422		
STA. 157+87 TO STA. 166+85(LT)	898	898		1,796		
STA. 166+85 TO STA. 210+70	4,385			8,770		
STA. 210+70 TO STA. 216+50(RT)	580	580		1,160		
STA. 216+50 TO STA. 220+72	422			844		
STA. 220+72 TO STA. 226+00(LT)	528	528		1,056		
STA. 226+00 TO STA. 227+05	105			210		
STA. 227+05 TO STA. 236+68(RT)	963	963		1,926		
STA. 236+68 TO STA. 249+75			2,614	2,614		
STA. 249+75 TO STA. 259+51(LT)	976	976		1,952		
STA. 259+51 TO STA. 268+84	933			1,866		
STA. 268+84 TO STA. 277+29(RT)	837	837		1,690		
STA. 277+29 TO STA. 285+74(LT)	845	845		1,690		
STA. 285+74 TO STA. 318+00	3,226			6,452		
BRIDGE OMISSION						
STA. 319+90 TO STA. 357+55	3,765			7,530		
STA. 357+55 TO STA. 368+11(RT)	1,056	1,056		2,112		
STA. 368+11 TO STA. 386+83			3,800	3,744		
STA. 386+83 TO STA. 396+33(LT)	950	950		1,900		
STA. 396+33 TO STA. 431+08	3,475			6,950		
STA. 431+08 TO STA. 442+17(RT)	1,109	1,109		2,218		
STA. 442+17 TO STA. 444+28	211			422		
STA. 444+28 TO STA. 449+56(LT)	528	528		1,056		
STA. 449+56 TO STA. 454+84	528			1,056		
STA. 454+84 TO STA. 459+60(RT)	476	476		952		
STA. 459+60 TO STA. 461+70			420	420		
STA. 461+70 TO STA. 471+20(LT)	950	950		1,900		
STA. 471+20 TO STA. 474+90			740	740		
STA. 474+90 TO STA. 478+33(RT)	343	343		686		
BRIDGE OMISSION						
STA. 479+82 TO STA. 484+19(RT)	437	437		874		
STA. 484+19 TO STA. 490+53			1,268	1,268		
STA. 490+53 TO STA. 492+40(LT)	187	187		374		
STA. 492+40 TO STA. 502+43	1,003			2,006		
STA. 502+43 TO STA. 511+93(RT)	950	950		1,900		
STA. 511+93 TO STA. 528+30			3,274	3,274		
STA. 528+30 TO STA. 535+16	686	686		1,372		
STA. 535+16 TO STA. 1346+00			3,086			
SUBTOTAL	44,717	16,254	18,352	53,893		
TOTAL LOCATION 4	133,216					
TOTAL FULTON COUNTY	285,257				108	144
TOTAL ALL COUNTIES**	702,844				216	288

** 2 APPLICATIONS.

MODEL: D:\m\h\l\... FILE NAME: S:\CENDRAFT\STDSR\US136\US136.dgn

USER NAME = lababidism	DESIGNED -	REVISED -
	DRAWN -	REVISED -
PLOT SCALE = 100.0000' / in.	CHECKED -	REVISED -
PLOT DATE = 12/14/2017	DATE -	REVISED -

**STATE OF ILLINOIS
DEPARTMENT OF TRANSPORTATION**

SUMMARY OF QUANTITIES

SCALE: SHEET OF SHEETS STA. TO STA.

F.A.P. RTE.	SECTION	COUNTY	TOTAL SHEETS	SHEET NO.
315/317	(33.109. 18. 102)RS-5;(101)RS-4	*	13	9
CONTRACT NO. 68D94				
ILLINOIS FED. AID PROJECT				

* FULTON/ MCDONOUGH

MICRO-SURFACING, SINGLE PASS, TYPE II, MIXTURE C			
MCDONOUGH COUNTY			
LOCATION	LENGTH	WIDTH	AREA
	FT	FT	SQ YD
LOCATION 1 US 136			
STA. 10+00 TO STA. 297+75	28,775	30	95,917
SUBTOTAL			95,917
FULTON COUNTY			
LOCATION 3 US 136/ US 24/ IL 100			
STA. 131+62 TO STA. 203+12	7,150	26	20,656
SUBTOTAL			20,656
LOCATION 4 US 24			
STA. 14+10 TO STA. 74+92	6,082	30	20,273
BRIDGE OMISSION			
STA. 75+54 TO STA. 109+78	3,424	30	11,413
BRIDGE OMISSION			
STA. 110+18 TO STA. 269+01	15,883	30	52,943
STA. EQ. 269+01.41 (BK)= STA. 269+09.00 (AH)			
STA. 269+09 TO STA. 318+00	4,891	30	16,303
BRIDGE OMISSION			
STA. 319+90 TO STA. 386+11	6,621	30	22,070
STA. EQ. 386+10.55 (BK)= STA. 385+82.67(AH)			
STA. 385+83 TO STA. 478+33	9,250	30	30,833
BRIDGE OMISSION			
STA. 479+82 TO STA. 541+49	6,167	30	20,557
STA. EQ. 541+48.96 (BK)= STA. 1336+89.96(AH)			
STA. 1336+90 TO STA. 1346+00	910	30	3,033
SUBTOTAL			177,427
TOTAL MCDONOUGH CO.			95,917
TOTAL FULTON CO.			198,082
TOTAL			293,999

RAISED REFLECTIVE PAVEMENT MARKER REMOVAL	
LOCATION	EACH
MCDONOUGH COUNTY	
LOCATION 1 US 136	
STA. 10+00 TO STA. 297+75	360
SUBTOTAL	360
TOTAL MCDONOUGH CO.	
360	
FULTON COUNTY	
LOCATION 3 US 136/ US 24/ IL 100	
STA. 131+62 TO STA. 203+12	89
SUBTOTAL	89
LOCATION 4 US 24	
STA. 14+10 TO STA. 74+92	77
BRIDGE OMISSION	
STA. 75+54 TO STA. 109+78	43
BRIDGE OMISSION	
STA. 110+18 TO STA. 269+01	199
STA. EQ. 269+01.41 (BK)= STA. 269+09.00 (AH)	
STA. 269+09 TO STA. 318+00	61
BRIDGE OMISSION	
STA. 319+90 TO STA. 386+11	83
STA. EQ. 386+10.55 (BK)= STA. 385+82.67(AH)	
STA. 385+83 TO STA. 478+33	116
BRIDGE OMISSION	
STA. 479+82 TO STA. 541+49	77
STA. EQ. 541+48.96 (BK)= STA. 1336+89.96(AH)	
STA. 1336+90 TO STA. 1346+00	12
SUBTOTAL	668
TOTAL FULTON CO.	
757	
TOTAL	
1,117	

RAISED REFLECTIVE PAVEMENT MARKER	
LOCATION	EACH
MCDONOUGH COUNTY	
LOCATION 1 US 136	
STA. 10+00 TO STA. 297+75	360
SUBTOTAL	360
TOTAL MCDONOUGH CO.	
360	
FULTON COUNTY	
LOCATION 3 US 136/ US 24/ IL 100	
STA. 131+62 TO STA. 203+12	89
SUBTOTAL	89
LOCATION 4 US 24	
STA. 14+10 TO STA. 74+92	77
BRIDGE OMISSION	
STA. 75+54 TO STA. 109+78	43
BRIDGE OMISSION	
STA. 110+18 TO STA. 269+01	199
STA. EQ. 269+01.41 (BK)= STA. 269+09.00 (AH)	
STA. 269+09 TO STA. 318+00	61
BRIDGE OMISSION	
STA. 319+90 TO STA. 386+11	83
STA. EQ. 386+10.55 (BK)= STA. 385+82.67(AH)	
STA. 385+83 TO STA. 478+33	116
BRIDGE OMISSION	
STA. 479+82 TO STA. 541+49	77
STA. EQ. 541+48.96 (BK)= STA. 1336+89.96(AH)	
STA. 1336+90 TO STA. 1346+00	12
SUBTOTAL	668
TOTAL FULTON CO.	
757	
TOTAL	
1,117	

CAPE SEAL, TYPE II, MIXTURE C *			
LOCATION	LENGTH	WIDTH	AREA
	FT	FT	SQ YD
FULTON COUNTY			
LOCATION 2 US 136			
STA. 475+64 TO STA. 501+71 (BK)	2607	30	8690
STA. 27+12(AH) TO STA. 253+70	22658	30	75527
STA. 253+70(AH) TO STA. 281+56	2786	25	7739
RAILROAD OMISSION			
STA. 283+16 TO STA. 504+48	22132	30	73773
TOTAL			165,729

* NO CAPE SEAL ON PARKING LANE THRU TOWN IN IPA VA

FIBER-MODIFIED ASPHALT CRACK SEALING	
LOCATION	LENGTH
	FT
FULTON COUNTY	
LOCATION 2 US 136	200
TOTAL	
200	

TEMPORARY RAISED PAVEMENT MARKER	
LOCATION	EACH
FULTON COUNTY	
LOCATION 2 US 136	
STA. 475+64 TO STA. 501+71 (BK)	130
STA. 27+12(AH) TO STA. 281+56	1,133
RAILROAD OMISSION	
STA. 283+16 TO STA. 504+48	1,107
TOTAL	
2,509	

MODEL: D:\m\h\... FILE NAME: S:\CENDRAFT\STDSER\US136\08\Micro-surfacing_2018_68D94\plan.dgn

USER NAME = lababidism	DESIGNED -	REVISED -
	DRAWN -	REVISED -
PLOT SCALE = 100.0000 ' / in.	CHECKED -	REVISED -
PLOT DATE = 12/14/2017	DATE -	REVISED -

STATE OF ILLINOIS
DEPARTMENT OF TRANSPORTATION

SUMMARY OF QUANTITIES

SCALE: SHEET OF SHEETS STA. TO STA.

F.A.P. RTE.	SECTION	COUNTY	TOTAL SHEETS	SHEET NO.
315/317	(33.109, 18, 102)RS-5;(101)RS-4	*	12	10
CONTRACT NO. 68D94				
ILLINOIS FED. AID PROJECT				

* FULTON/ MCDONOUGH

SHORT TERM PAVEMENT MARKING	
LOCATION	LENGTH FT
MCDONOUGH COUNTY	
LOCATION 1 US 136	
STA. 131+62 TO STA. 203+12	715
TOTAL MC DONOUGH CO.	715
FULTON COUNTY	
LOCATION 2 US 136	
STA. 475+64 TO STA. 501+71 (BK)	261
STA. 27+12(AH) TO STA. 281+56	2,544
RAILROAD OMISSION	
STA. 283+16 TO STA. 504+48	2,213
SUBTOTAL	5,018
LOCATION 3 US 136/ US 24/ IL 100	
STA. 131+62 TO STA. 203+12	715
SUBTOTAL	715
LOCATION 4 US 24	
STA. 14+10 TO STA. 74+92	608
BRIDGE OMISSION	
STA. 75+54 TO STA. 109+78	342
BRIDGE OMISSION	
STA. 110+18 TO STA. 269+01	1,588
STA. EQ. 269+01.41 (BK)= STA. 269+09.00 (AH)	
STA. 269+09 TO STA. 318+00	489
BRIDGE OMISSION	
STA. 319+90 TO STA. 386+11	662
STA. EQ. 386+10.55 (BK)= STA. 385+82.67(AH)	
STA. 385+83 TO STA. 478+33	925
BRIDGE OMISSION	
STA. 479+82 TO STA. 541+49	617
STA. EQ. 541+48.96 (BK)= STA. 1336+89.96(AH)	
STA. 1336+90 TO STA. 1346+00	91
SUBTOTAL	5,323
TOTAL FULTON CO.	11,056
TOTAL	11,771

SHORT TERM PAVEMENT MARKING REMOVAL		
LOCATION	LENGTH FT	AREA SQ FT
MCDONOUGH COUNTY		
LOCATION 1 US 136		
STA. 131+62 TO STA. 203+12	715	238
TOTAL MC DONOUGH CO.		238
FULTON COUNTY		
LOCATION 2 US 136		
STA. 475+64 TO STA. 501+71 (BK)	261	87
STA. 27+12(AH) TO STA. 281+56	2,544	848
RAILROAD OMISSION		
STA. 283+16 TO STA. 504+48	2,213	738
SUBTOTAL		1,673
LOCATION 3 US 136/ US 24/ IL 100		
STA. 131+62 TO STA. 203+12	715	238
SUBTOTAL		238
LOCATION 4 US 24		
STA. 14+10 TO STA. 74+92	608	203
BRIDGE OMISSION		
STA. 75+54 TO STA. 109+78	342	114
BRIDGE OMISSION		
STA. 110+18 TO STA. 269+01	1,588	529
STA. EQ. 269+01.41 (BK)= STA. 269+09.00 (AH)		
STA. 269+09 TO STA. 318+00	489	163
BRIDGE OMISSION		
STA. 319+90 TO STA. 386+11	662	221
STA. EQ. 386+10.55 (BK)= STA. 385+82.67(AH)		
STA. 385+83 TO STA. 478+33	925	308
BRIDGE OMISSION		
STA. 479+82 TO STA. 541+49	617	206
STA. EQ. 541+48.96 (BK)= STA. 1336+89.96(AH)		
STA. 1336+90 TO STA. 1346+00	91	30
SUBTOTAL		1,774
TOTAL FULTON CO.		3,685
TOTAL		3,923

PAVEMENT MARKING REMOVAL -WATER BLASTING		
LOCATION	LENGTH FOOT	AREA SQ FT
MCDONOUGH COUNTY		
LOCATION 1 US 136		
STA. 10+00 TO STA. 104+78	20,826	6,942
STA. 104+78 TO STA. 111+46	2,171	724
STA. 111+46 TO STA. 114+04	581	194
STA. 114+04 TO STA. 120+90	2,230	743
STA. 120+90 TO STA. 286+15	37,181	12,394
STA. 286+15 TO STA. 293+00	2,226	742
STA. 293+00 TO STA. 297+75	950	317
SUBTOTAL	66,165	22,055
LOCATION 2 US 136		
STA. 475+65 TO STA. 501+71	5,212	1,737
STA. 27+12 TO STA. 504+48	93,560	31,187
STA. 476+64 TO STA. 486+50(LT)	986	329
STA. 476+50 TO STA. 501+71	630	210
STA. 27+12 TO STA. 93+50	1,660	553
STA. 31+75 TO STA. 41+80(RT)	1,006	335
STA. 41+80 TO STA. 51+50(LT)	970	323
STA. 79+85 TO STA. 93+50(RT)	1,365	455
STA. 94+50 TO STA. 108+25(LT)	1,375	458
STA. 94+50 TO STA. 169+00	1,870	623
STA. 160+25 TO STA. 176+35(RT)	1,610	537
STA. 169+00 TO STA. 183+80(LT)	1,480	493
STA. 176+35 TO STA. 182+25	150	50
STA. 182+25 TO STA. 196+15(RT)	1,390	463
STA. 193+15 TO STA. 206+85(LT)	1,370	457
STA. 183+80 TO STA. 193+15	240	80
STA. 274+75 TO STA. 282+84(RT)	809	270
STA. 281+84 TO STA. 289+00(LT)	716	239
STA. 196+15 TO STA. 281+84	2,140	713
STA. 289+00 TO STA. 302+70(RT)	1,370	457
STA. 301+25 TO STA. 310+50(LT)	925	308
STA. 282+84 TO STA. 301+25	460	153
STA. 392+70 TO STA. 412+50(RT)	1,980	660
STA. 404+25 TO STA. 418+90(LT)	1,465	488
STA. 302+70 TO STA. 404+25	2,540	847
STA. 434+50 TO STA. 447+25(RT)	1,275	425
STA. 444+85 TO STA. 459+90	1,505	502
STA. 412+50 TO STA. 444+85(LT)	810	270
STA. 483+50 TO STA. 488+90(RT)	540	180
STA. 491+70 TO STA. 498+00	630	210
STA. 447+25 TO STA. 504+48	1,430	477
RAILROAD		360
SUBTOTAL	133,469	44,850

PAVEMENT MARKING REMOVAL -WATER BLASTING		
LOCATION	SKIP-DASH YELLOW FOOT	SOLID SINGLE YELLOW FOOT
FULTON COUNTY		
LOCATION 3 US 136/ US 24/ IL 100		
STA. 131+62 TO STA. 165+40	7,606	2,535
STA. 165+40 TO STA. 174+50	2,960	987
STA. 174+50 TO STA. 182+50	2,600	867
STA. 182+50 TO STA. 195+50	2,930	977
STA. 195+50 TO STA. 203+12	2,476	825
SUBTOTAL	18,572	6,191
TOTAL LOCATION 3		
TOTAL FULTON COUNTY		
		51,040
TOTAL ALL COUNTIES		73,095

TRAFFIC CONTROL AND PROTECTION STANDARD 701306	
LOCATION	LSUM
MCDONOUGH COUNTY	
LOCATION 1 US 136	0.2
SUBTOTAL MCDONOUGH	0.2
FULTON COUNTY	
LOCATION 2 US 136	0.3
LOCATION 3 US 136/ US 24	0.1
LOCATION 4 US 24	0.4
SUBTOTAL FULTON	0.8
TOTAL	1

MOBILIZATION	
LOCATION	LSUM
MCDONOUGH COUNTY	
LOCATION 1 US 136	0.2
SUBTOTAL MCDONOUGH	0.2
FULTON COUNTY	
LOCATION 2 US 136	0.3
LOCATION 3 US 136/ US 24	0.1
LOCATION 4 US 24	0.4
SUBTOTAL FULTON	0.8
TOTAL	1

BUMP REMOVAL	
LOCATION	EACH
MCDONOUGH COUNTY	
LOCATION 1 US 136	5
SUBTOTAL MCDONOUGH	5
FULTON COUNTY	
LOCATION 2 US 136	10
LOCATION 3 US 136/ US 24	5
LOCATION 4 US 24	20
SUBTOTAL FULTON	35
TOTAL	40

MODEL: Default
 FILE NAME: S:\GENDRIFT\TSD\PLANS\SQUAD B\Micro Surfacing 2018 68D94\plans.dgn

USER NAME = ababidism	DESIGNED -	REVISED -
PLOT SCALE = 100.0000' / in.	DRAWN -	REVISED -
PLOT DATE = 12/14/2017	CHECKED -	REVISED -
	DATE -	REVISED -

**STATE OF ILLINOIS
 DEPARTMENT OF TRANSPORTATION**

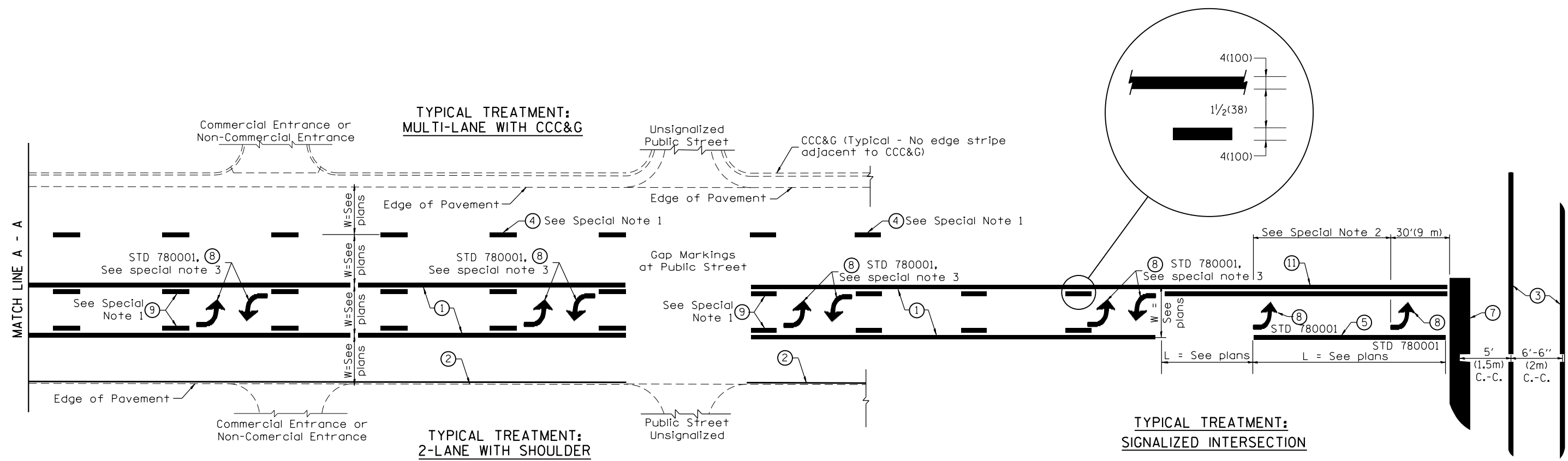
SUMMARY OF QUANTITIES

SCALE: SHEET OF SHEETS STA. TO STA.

F.A. RTE.	SECTION	COUNTY	TOTAL SHEETS	SHEET NO.
315/317	(33,109, 18'102)RS-5(101)RS-4	*	13	11
CONTRACT NO. 68D94				
ILLINOIS FED. AID PROJECT				

* FULTON/ MCDONOUGH

DESIGNER NOTES:
1. Include State Standard 780001 (Typical Pavement Markings)



FLUSH PAVED MEDIAN: TWO-WAY LEFT TURN LANE WITH ONE-WAY LEFT TURN LANE AT SIGNALIZED INTERSECTION

TYPICAL PAVEMENT MARKING LEGEND
(Note: This is a District Standard Legend. Some elements may not apply to specific project.)

- ① 4(100) Solid (Yellow)
- ② 4(100) Solid (White)
- ③ 2-6(150) Crosswalk @ 6'-6" (2m)min C.-C. (White)
2-8(200) Crosswalk @ 6'-6" (2m)min C.-C. (White) (When traffic signals are present.)
- ④ 6(150) Skip-Dash (White) (See Special Note 1)
- ⑤ 8(200) Solid (White)
- ⑥ 12(300) Diagonal (White) (Item ⑥ is shown on Std. 780001)
- ⑦ 24(600) Stop Bar (White)
- ⑧ Letters & Arrows (See Std. 780001 and Special Notes 2 & 3)
- ⑨ 4(100) Skip-Dash (Yellow) (See Special Note 1)
- ⑩ 12(300) Diagonal (Yellow) (See Table A) 45°
- ⑪ 4(100) Double Solid (Yellow) 11(280) C.-C. See Table A

SPECIAL NOTES

1. Skip-Dash markings will be centered between both ends of city blocks and shall be placed in alignment transversely across the pavement.
2. The following shall apply to arrows located in one-way left turn lanes:
 - A. A minimum of two (2) arrows is required.
 - B. The maximum spacing between arrows is 80' (24 m).
 - C. Arrows shall be evenly spaced if three (3) or more are required.
3. The following shall apply to arrow pairs located in two-way left turn lanes:
 - A. A minimum of two (2) arrow pairs is required.
 - B. The maximum spacing between arrow pairs is 200' (61 m).
 - C. Arrow pairs shall be evenly spaced if three (3) or more are required.
 - D. The spacing between Bi Directional Left Turn Arrows is 33' (10 m).

GENERAL NOTES

1. Refer to State Standard 780001 for additional Pavement Markings including letters & arrows.
2. See Plans for Pavement Markings adjacent to curbed islands and medians, and through lane reductions.
3. Refer to Article 780.13 for letter, number and symbol areas (sq. ft.)
4. Areas are grooved 1" beyond each edge for the following symbols:
 - Through Arrow= 14.8 sq. ft.
 - Large Left or Right Arrow= 21.9 sq. ft.
 - 2 Arrow Combination Left (or Right) and Through= 34.9 sq. ft.
 - Wrong Way Arrow= 29.5 sq. ft.
 - Railroad Crossing Symbol= 69.8 sq. ft.
 (For further information, refer to BDE Special Provision: Grooving for Recessed Pavement Markings)

01-01-97	RENUM. F-8.03, NEW REVISION BOX	T.P.	10-16-06	REVISED TO 2007 SPEC.	
02-07-97	ADD BI DIRECTIONAL DIMENSION	J.A.	2/29/16	ADDED GROOVING AREAS	R.D.
10-97	CORRECT BI DIRECTIONAL DIMENSION	J.A.			
08-02	ADD CROSSWALK DMNS. WITH T.S.	M.A.			

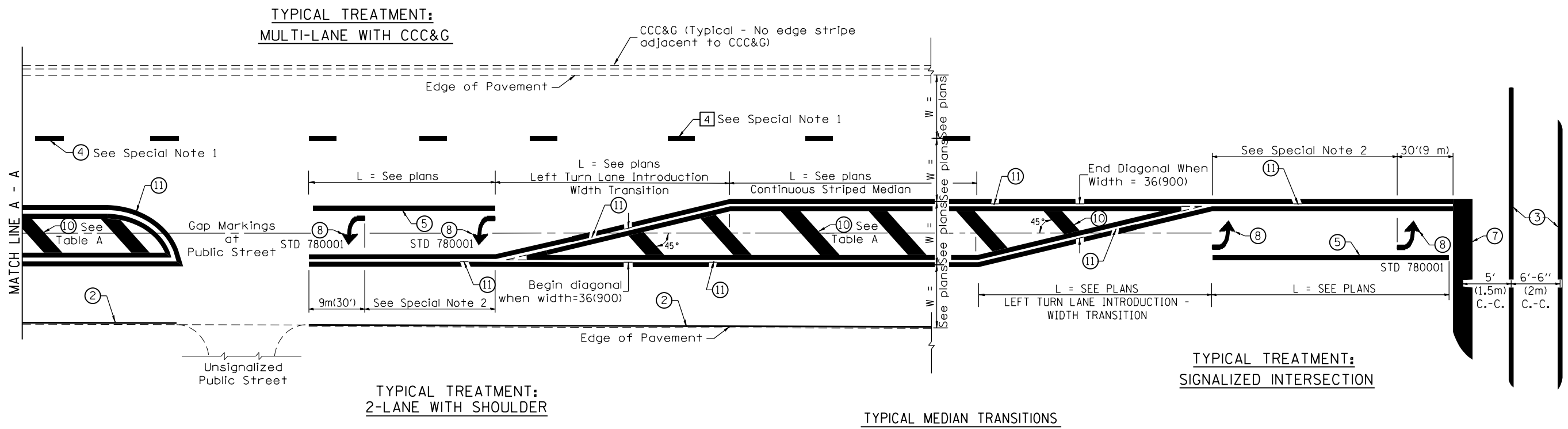
STATE OF ILLINOIS
DEPARTMENT OF TRANSPORTATION

TYPICAL PAVEMENT MARKINGS

SHT. 1 OF 2
CADD STD. 780001-D4

F.A.P. RTE.	SECTION	COUNTY	TOTAL SHEETS	SHEET NO.
315/317	(33.109, 18, 102)RS-5;(101)RS-4	*	13	12
CONTRACT NO. 68D94				
FED. ROAD DIST. NO. ILLINOIS FED. AID PROJECT				

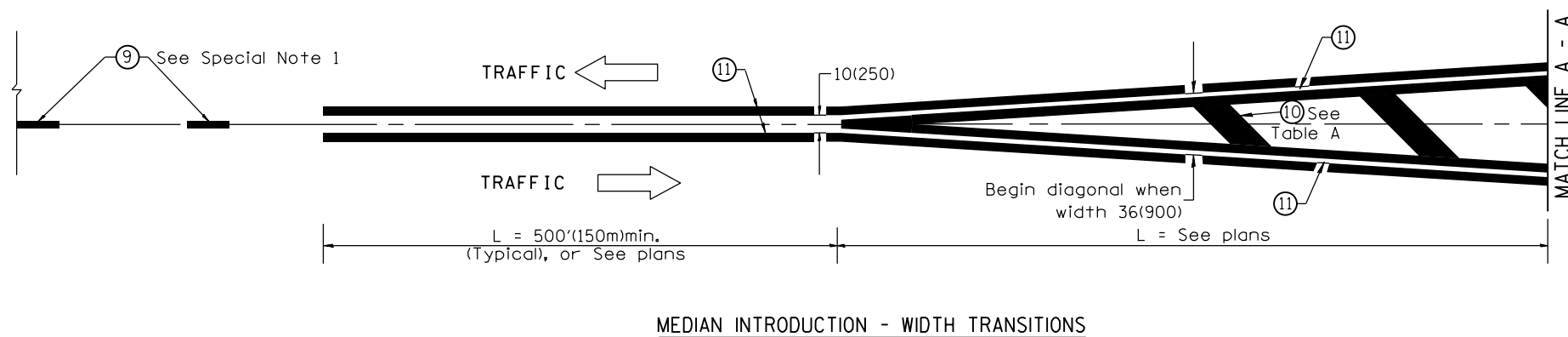
* FULTON/ McDONOUGH



FLUSH PAVED MEDIAN: RESTRICTED LEFT TURN LANE

TABLE A
RECOMMENDED SPACING BETWEEN DIAGONAL LINES

SPEED LIMIT RANGE	INTERSECTION CHANNELIZATION (Includes Width Transitions for Median and Left Turn Lane Introductions)	
	CONTINUOUS	
Less Than 30 mph (50 km/h)	50' (15m)	15' (5m)
30 - 45 mph (50 - 70 km/h)	75' (23m)	20' (6m)
Over 45 mph (70 km/h)	150' (46m)	30' (9m)



All dimensions are in inches (millimeters) unless otherwise noted.