

F.A. RTE.	SECTION	COUNTY	TOTAL SHEETS	SHEET NO.
	SECTION (110-114; 1-2; 106-107)CJS	**	8	1
ILLINOIS			CONTRACT NO. 68E04	
** PEORIA, PUTNAM & TAZEWELL				

INDEX OF SHEETS

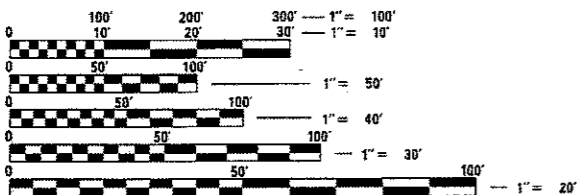
- 1 COVER SHEET
- 2 COMMITMENTS/JOB SPECIFIC NOTES
- 3 SUMMARY OF QUANTITIES
- 4 SCHEDULE OF QUANTITIES
- 5-7 LOCATION MAPS
- 8 CADD STANDARDS

HIGHWAY STANDARDS

- 701101-05
- 701301-04
- 701306-04
- 701311-03
- 701400-09
- 701406-11
- 701601-09
- 701901-07

DISTRICT STANDARDS

452001



FULL SIZE PLANS HAVE BEEN PREPARED USING STANDARD ENGINEERING SCALES. REDUCED SIZED PLANS WILL NOT CONFORM TO STANDARD SCALES. IN MAKING MEASUREMENTS ON REDUCED PLANS, THE ABOVE SCALES MAY BE USED.

J.U.L.I.E.
 JOINT UTILITY LOCATION INFORMATION FOR EXCAVATION
 1-800-892-0123
 OR 811

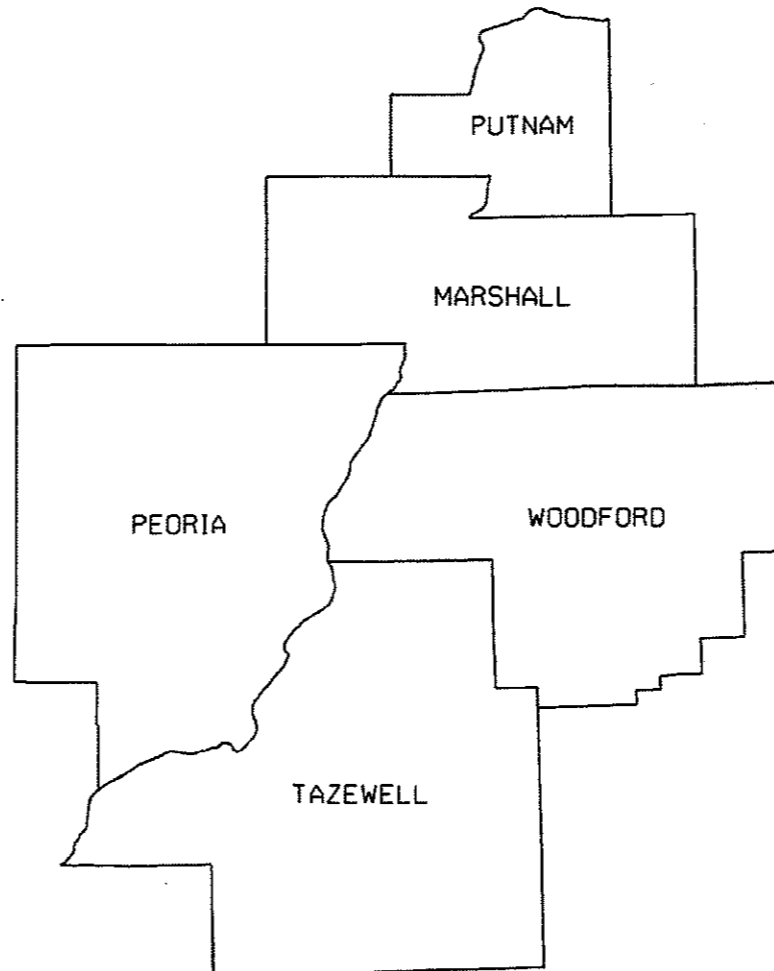
PROJECT ENGINEER: MIKE LEWIS 609-671-3454
 PROJECT MANAGER: SOBHI LABABIDI/RAY SAMARA 309-671-3460
 CATALOG NO. 035544-00D
 CONTRACT NO. 68E04

STATE OF ILLINOIS
 DEPARTMENT OF TRANSPORTATION
 DIVISION OF HIGHWAYS
**PROPOSED
 HIGHWAY PLANS**

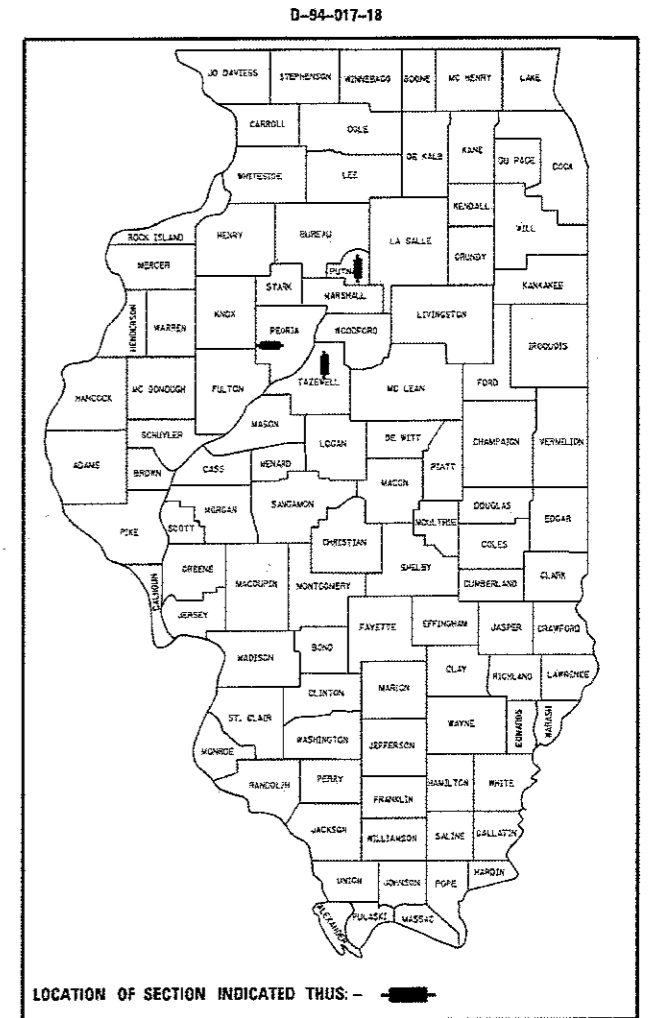
FAS 2402 (US 150), FAS 2370 (IL 26)
 FAI 155 (I-155)
 SECTION (110-114; 1-2; 106-107)CJS
 PROJECT

TYPE OF IMPROVEMENT: CONTRACT MAINTENANCE
 PEORIA, PUTNAM AND TAZEWELL COUNTIES

C-94-022-18



GROSS LENGTH = 31.22 MILES
 NET LENGTH = 31.00 MILES



PROJECT DESCRIPTION:

CRACK AND JOINT SEALING ALONG US 150 FROM W OF KICKAPOO TO IL 78, IL 26 FROM IL 18 TO HENNEPIN & I-155 FROM I-74 TO FEATHER RD

STATE OF ILLINOIS
 DEPARTMENT OF TRANSPORTATION
 DIVISION OF HIGHWAYS

SUBMITTED December 21, 2017

Paul A. James
 REGION THREE ENGINEER

Feb 2, 2018
 ENGINEER OF DESIGN AND ENVIRONMENT

Paul P.
 DIRECTOR OF PROGRAM DEVELOPMENT

PRINTED BY THE AUTHORITY
 OF THE STATE OF ILLINOIS

COMMITMENTS

NO COMMITMENTS HAVE BEEN MADE FOR THIS PROJECT.

JOB SPECIFIC NOTES

ROUT & SEAL CENTERLINE, TRANSVERSE, INNER EDGELINE OF TURNING LANES AND CONSISTENT CENTER OF LANE CRACKS ONLY.

CARE SHALL BE EXERCISED TO KEEP SEALANT OFF EXISTING PAVEMENT MARKINGS. ANY DAMAGE TO THE PAVEMENT MARKINGS SHALL BE REPAIRED BY THE CONTRACTOR AT HIS/HER OWN EXPENSE. WORK SHALL BE DONE IN ACCORDANCE TO SECTION 780 OF THE STANDARD SPECIFICATIONS AND TO THE SATISFACTION OF THE ENGINEER.

ALL DIRT AND DEBRIS CREATED BY THE ROUTING OPERATION SHALL BE CLEANED FROM THE PAVEMENT AND PAVED SHOULDERS AT THE END OF THE DAY'S OPERATIONS ACCORDING TO ARTICLE 107.15 OF THE STANDARD SPECIFICATIONS.

LOCATIONS ARE NUMBERED BY PRIORITY. LOCATIONS SHALL BE COMPLETED IN THIS ORDER ONLY.

• FAS 2402/ 2370 & FAI 155
 ** PEORIA, PUTNAM & TAZEWELL

FILE NAME =	USER NAME = ecbmgs	DESIGNED -	REVISED -	STATE OF ILLINOIS DEPARTMENT OF TRANSPORTATION	COMMITMENTS & JOB SPECIFIC NOTES	F.A. RTE.	SECTION	COUNTY	TOTAL SHEETS	SHEET NO.
D:\P\GEN\DRAW\STD\PLNS\SQ\RD 6\68E04	Route and seal 2018\plan.dgn	DRAWN -	REVISED -			VAR.	SECTION 010-114 1-2 106-107CJS	**	8	2
Default	PLOT SCALE = 400.0000 ' / in.	CHECKED -	REVISED -			CONTRACT NO. 68E04				
	PLOT DATE = 12/21/2017	DATE -	REVISED -			SCALE:	SHEET OF SHEETS	STA. TO STA.	ILLINOIS FED. AID PROJECT	

TRAFFIC CONTROL AND PROTECTION, STANDARD 701306	
LOCATION	L SUM
US 150 FROM W OF KICKAPOO TO IL 78	0.5
IL 26 FROM IL 18 TO HENNEPIN	0.5
TOTAL	1

TRAFFIC CONTROL AND PROTECTION, STANDARD 701406	
LOCATION	L SUM
I-155 FROM I-74 TO FEATHER ROAD	1
TOTAL	1

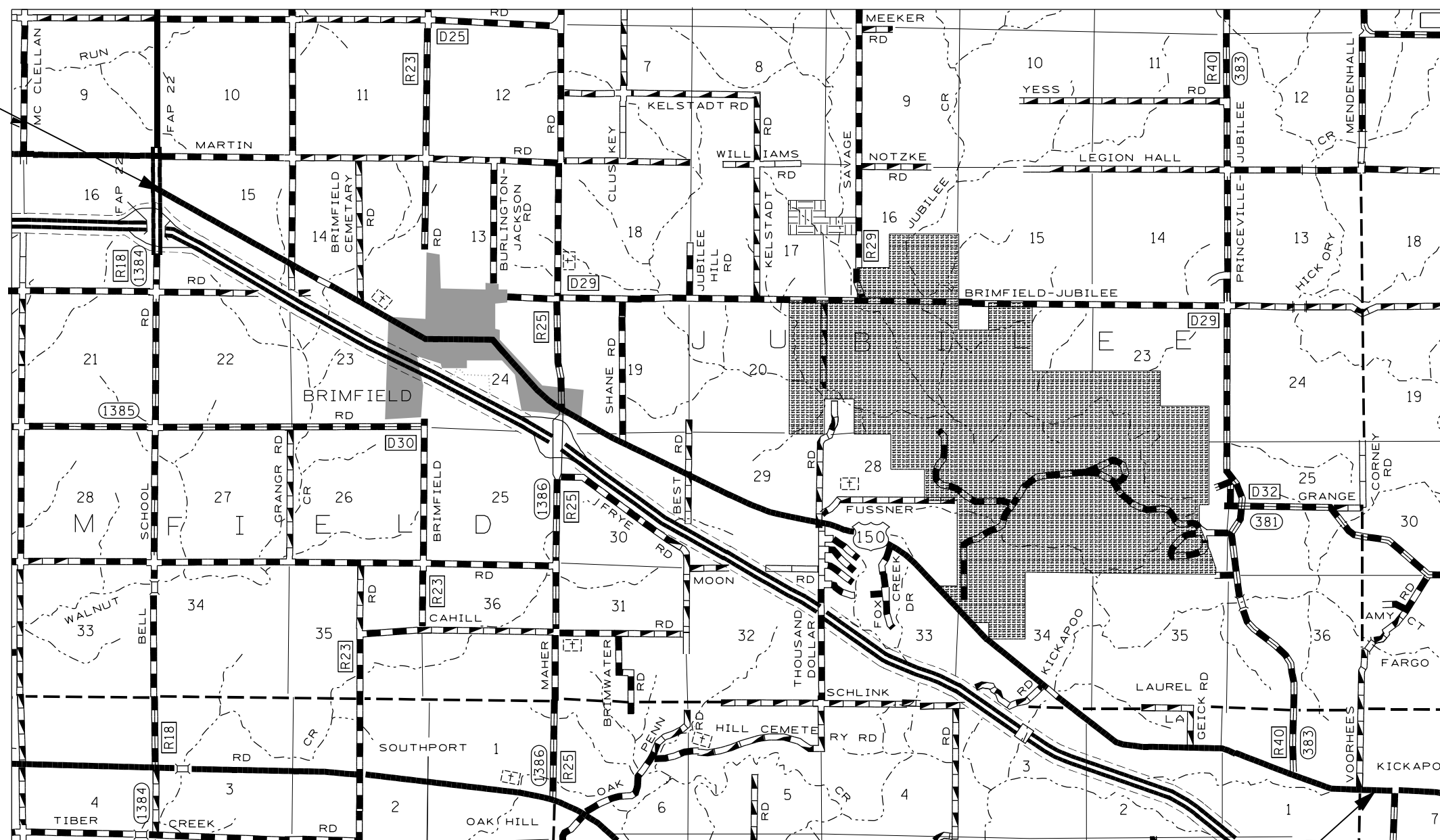
TRAFFIC CONTROL AND PROTECTION, STANDARD 701601	
LOCATION	L SUM
IL 26 FROM IL 18 TO HENNEPIN	1
TOTAL	1

MOBILIZATION	
LOCATION	L SUM
US 150 FROM W OF KICKAPOO TO IL 78	0.3
IL 26 FROM IL 18 TO HENNEPIN	0.5
I-155 FROM I-74 TO FEATHER ROAD	0.2
TOTAL	1

CRACK ROUTING AND FILLING		
LOCATION		POUND
PEORIA COUNTY		
LOCATION 1	US 150 FROM W OF KICKAPOO TO IL 78	40524
PUTNAM COUNTY		
LOCATION 2	IL 26 FROM IL 18 TO HENNEPIN	57353
TAZEWELL COUNTY		
LOCATION 3	I-155 FROM I-74 TO FEATHER ROAD	38605
TOTAL		136,482

• FAS 2402/ 2370 & FAI 155
 •• PEORIA, PUTNAM & TAZEWELL

**PROJECT BEGINS
STA. 896 + 30**



**PROJECT ENDS
STA. 415 + 30**

STATION EQUATIONS:
 STA. 996+73 (BK) = -1+00 (AH)
 STA. 239+45 (BK) = 239+50 (AH)
 STA. 250+64.6 (BK) = 250+54.3 (AH)
 STA. 314+97 (BK) = 315+00 (AH)

FILE NAME =	USER NAME = aubreys	DESIGNED -	REVISED -
D:\VPD\GEN\DRIFT\STD\PLNS\SQUAD 8\68E04	Route and seal 2018\plan.dgn	DRAWN -	REVISED -
Default	PLOT SCALE = 400.0000' / in.	CHECKED -	REVISED -
	PLOT DATE = 12/21/2017	DATE -	REVISED -

**STATE OF ILLINOIS
DEPARTMENT OF TRANSPORTATION**

LOCATION #1 US 150 (PEORIA COUNTY)
 SCALE: SHEET OF SHEETS STA. TO STA.

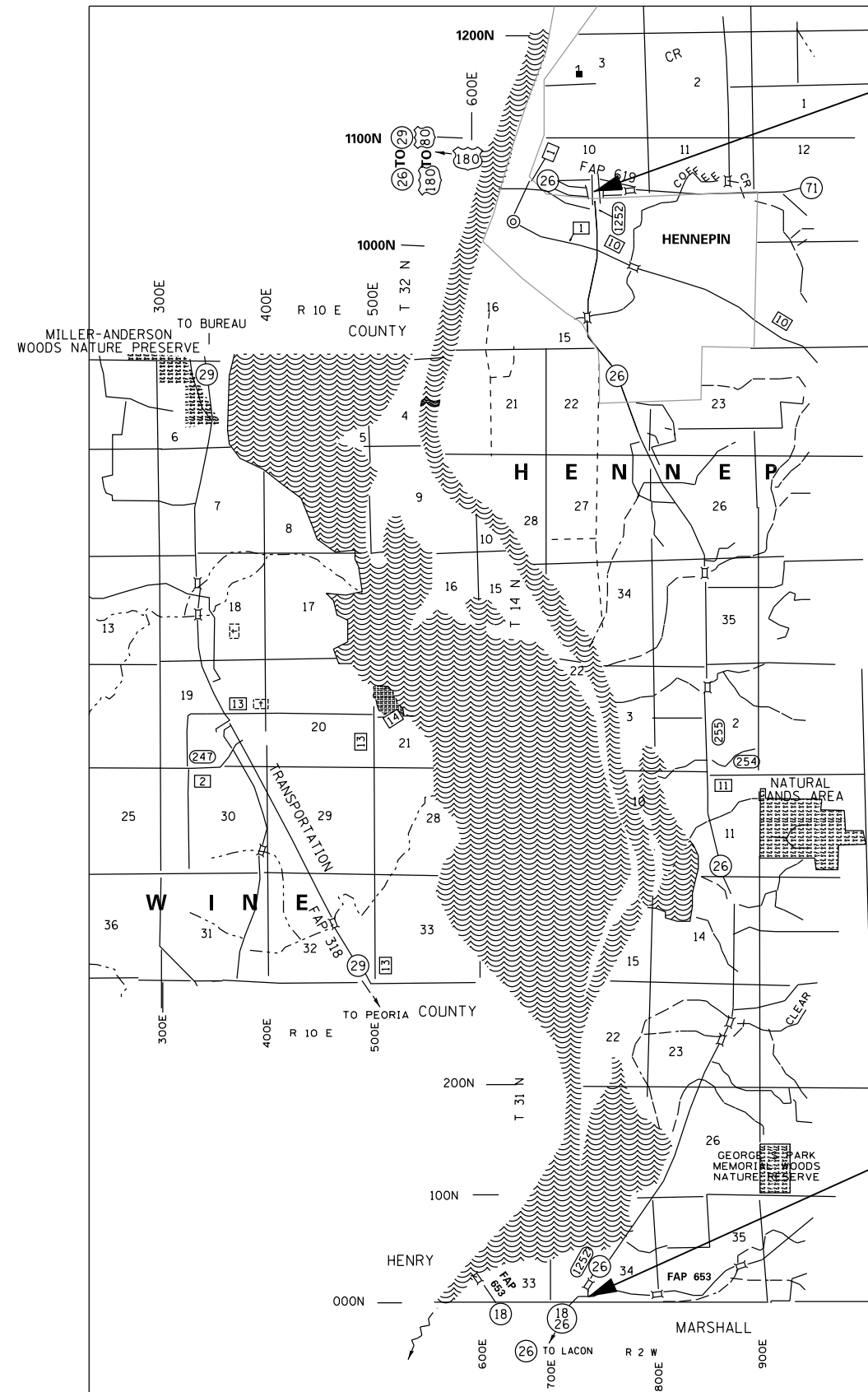
F.A. RTE.	SECTION	COUNTY	TOTAL SHEETS	SHEET NO.
D4 CRACK & JOINT SEAL 2018-1	VARIOUS	ILLINOIS	11	5
CONTRACT NO. 68E04				
ILLINOIS FED. AID PROJECT				

• FAS 2402/ 2370 & FAI 155
 •• PEORIA, PUTNAM & TAZEWELL

**PROJECT BEGINS
STA. 26 + 85**

BRIDGE OMISSIONS

- SN 078-0018
- SN 078-0034
- SN 078-0036
- SN 078-0037
- SN 078-0046
- SN 078-2003
- SN 078-2006



**PROJECT ENDS
STA. 625 + 82**

STA. EQUA. 15+31.8 (BK) = 56+86.8 (AH)

FILE NAME =	USER NAME = aubreygs	DESIGNED -	REVISED -
D:\VPD\GEN\DRIFT\ST&PLNS\SQUAD 8\68E04	Route and seal 2018\plan.dgn	DRAWN -	REVISED -
Default	PLOT SCALE = 400.0000' / in.	CHECKED -	REVISED -
	PLOT DATE = 12/21/2017	DATE -	REVISED -

**STATE OF ILLINOIS
DEPARTMENT OF TRANSPORTATION**

LOCATION #2 IL 26 (PUTNAM COUNTY)

SCALE: SHEET OF SHEETS STA. TO STA.

F.A. RTE.	SECTION	COUNTY	TOTAL SHEETS	SHEET NO.
	SECTION 110-114; 1-2; 106-107CJS	**	8	6
CONTRACT NO. 68E04				
ILLINOIS FED. AID PROJECT				

- FAS 2402/ 2370 & FAI 155
- PEORIA, PUTNAM & TAZEWELL

**PROJECT BEGINS
NB & SB
STA. 31+85**

BRIDGE OMISSIONS

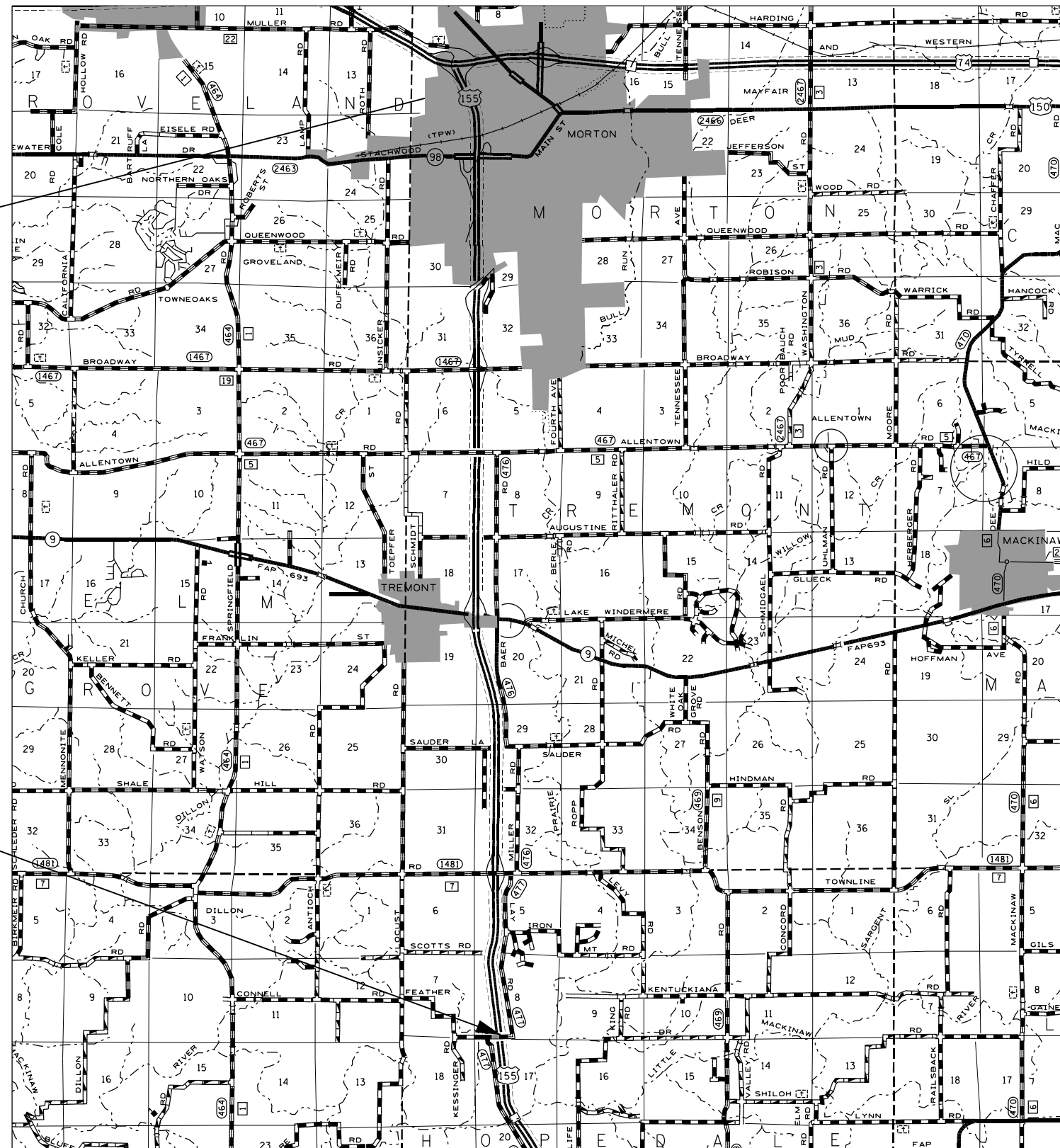
- SN 090-0125
- SN 090-0126
- SN 090-0128
- SN 090-0129
- SN 090-0131
- SN 090-0134
- SN 090-0135



**PROJECT ENDS
NB STA. 616+26.95
SB STA. 616+36.21**

STATION EQUATIONS:

- STA. 167+06.37 (BK) = 164+34.54 (AH)
- STA. 606+47.59 (BK) = 608+08.87 (AH)



FILE NAME =	USER NAME = aubreys	DESIGNED -	REVISED -
G:\PD\GEN\DRIFT\STD\PLNS\SQUAD 8\68E04	Route and seal 2018\plan.dgn	DRAWN -	REVISED -
Default	PLOT SCALE = 400.0000' / in.	CHECKED -	REVISED -
	PLOT DATE = 12/21/2017	DATE -	REVISED -

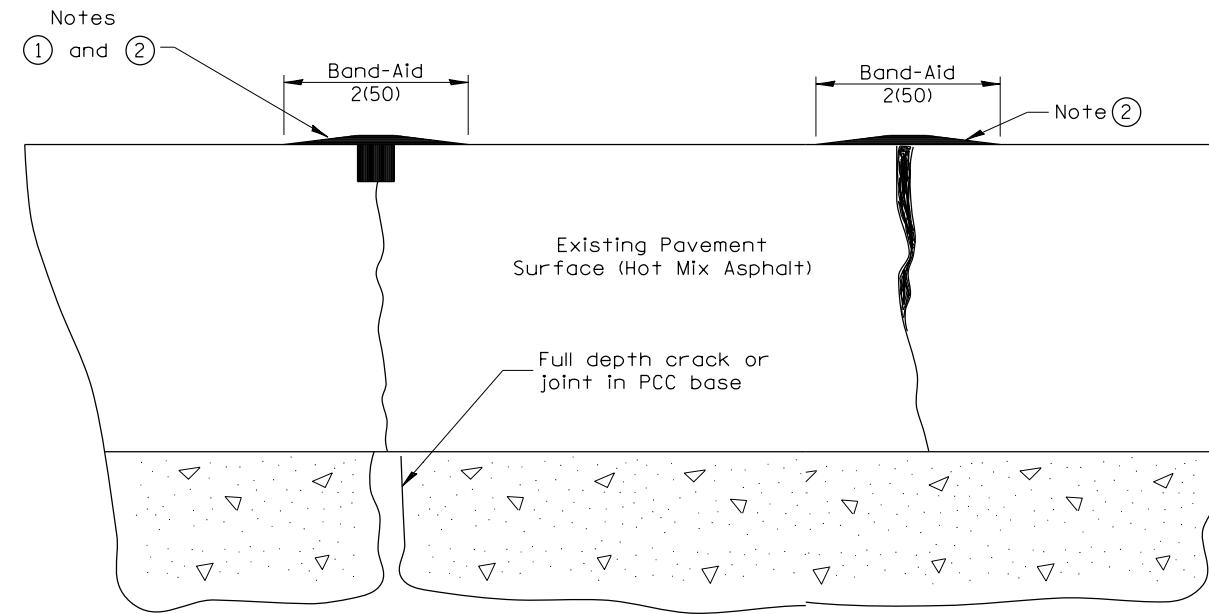
**STATE OF ILLINOIS
DEPARTMENT OF TRANSPORTATION**

LOCATION #3 I-155 (TAZEWELL COUNTY)

SCALE: SHEET OF SHEETS STA. TO STA.

F.A. RTE.	SECTION	COUNTY	TOTAL SHEETS	SHEET NO.
	SECTION 010-114; 1-2; 106-107CJS	**	8	7
CONTRACT NO. 68E04				
ILLINOIS FED. AID PROJECT				

- FAS 2402/ 2370 & FAI 155
- PEORIA, PUTNAM & TAZEWELL

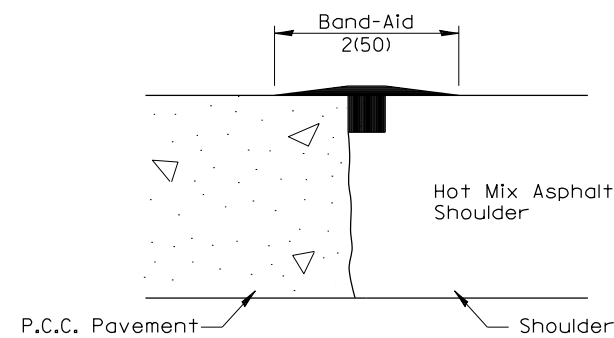


**PRIMARY TRANSVERSE,
LONGITUDINAL CRACK &
P.C.C. CENTERLINE JOINT**

**SECONDARY
ADJACENT CRACK**

NOTES

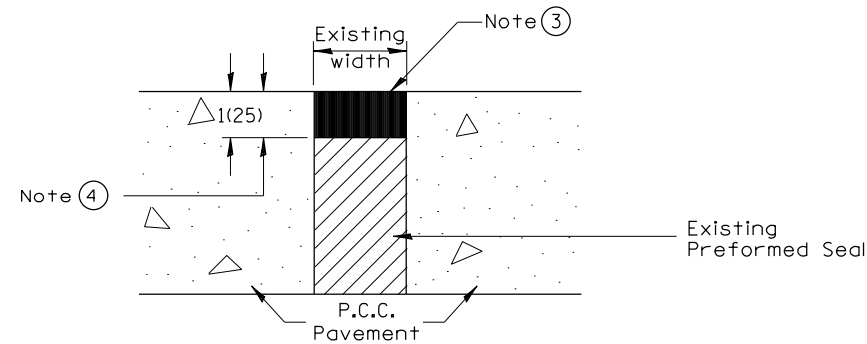
- ① Route or saw to $\frac{3}{4}(20)$ wide by $\frac{3}{4}(20)$ deep; (1:1 ratio).
- ② Overfill with sealant; squeeze to provide 2 (50) wide flush "band-aid" effect; feather edges flush.
- ③ Seal flush without "band-aid" effect.
- ④ Route to 1(25) depth; clean and reface walls.
- ⑤ Route or saw $\frac{3}{4}(20)$ wide by variable depth. Depth based upon crack or joint depth and $\frac{3}{4}(20)$ minimum sealer over backer rod.



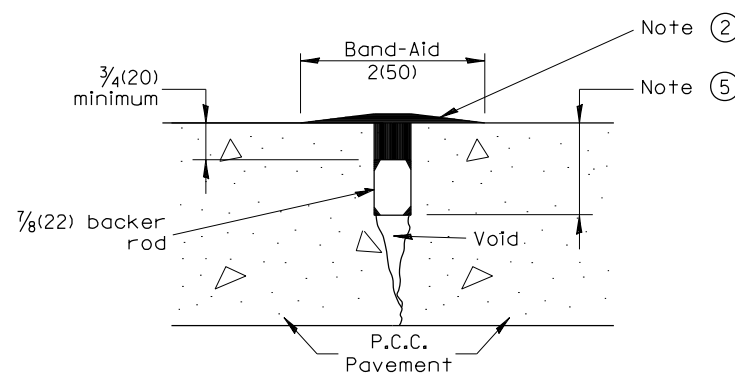
**SHOULDER JOINT (Notes ① & ②) AND
LONGITUDINAL RANDOM CRACK (Notes ① & ③)**

GENERAL NOTES

- 1. Crack and Joint Sealing shall conform to Section 451 and 452.
- 2. The "Band Aid" width shall be reduced or eliminated in areas adjacent to existing pavement markings.



TRANVERSE EXPANSION JOINT



SPECIAL TREATMENT - BACKER ROD
FOR JOINTS AND/OR CRACKS GREATER THAN $\frac{3}{4}(20)$ DEEP
(DOES NOT APPLY TO TRANSVERSE RANDOM CRACKS IN CONTINUOUSLY REINFORCED PAVEMENTS)

• FAS 2402/ 2370 & FAI 155
•• PEORIA, PUTNAM & TAZEWELL

All dimensions are in inches (millimeters) unless otherwise noted.

01-01-97	RENUM. C-36.01, NEW REVISE BOX	T.P.			STATE OF ILLINOIS DEPARTMENT OF TRANSPORTATION	CRACK AND JOINT SEALING	F.A. RTE.	SECTION	COUNTY	TOTAL SHEETS	SHEET NO.
05-01-97	REVISED	E.T.					SECTION 110-114; 1-2; 106-107CJS	••	8	8	
10-16-06	REVISED TO 2007 SPEC.	M.A.					CONTRACT NO. 68E04				
						NOT TO SCALE	CADD STD. 452001-D4		FED. ROAD DIST. NO. ILLINOIS FED. AID PROJECT		