

STATE OF ILLINOIS
DEPARTMENT OF TRANSPORTATION

F.A.P. RTE.	SECTION	COUNTY	TOTAL SHEETS	SHEET NO.
627	SECTION (B,L,M) SFY	LASALLE	6	1
		ILLINOIS	CONTRACT NO. 66H18	

INDEX OF SHEETS

- 1 COVER SHEET
- 2 GENERAL NOTES
- 3 SUMMARY OF QUANTITIES
- 4 TYPICAL SECTIONS
- 5 SCHEDULES
- 6 DETAILS

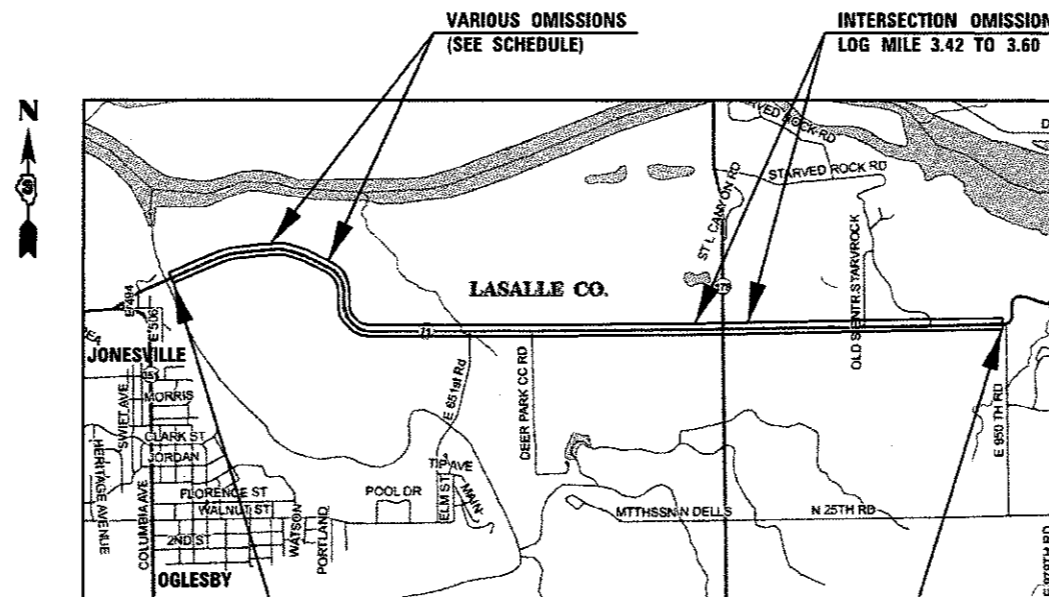
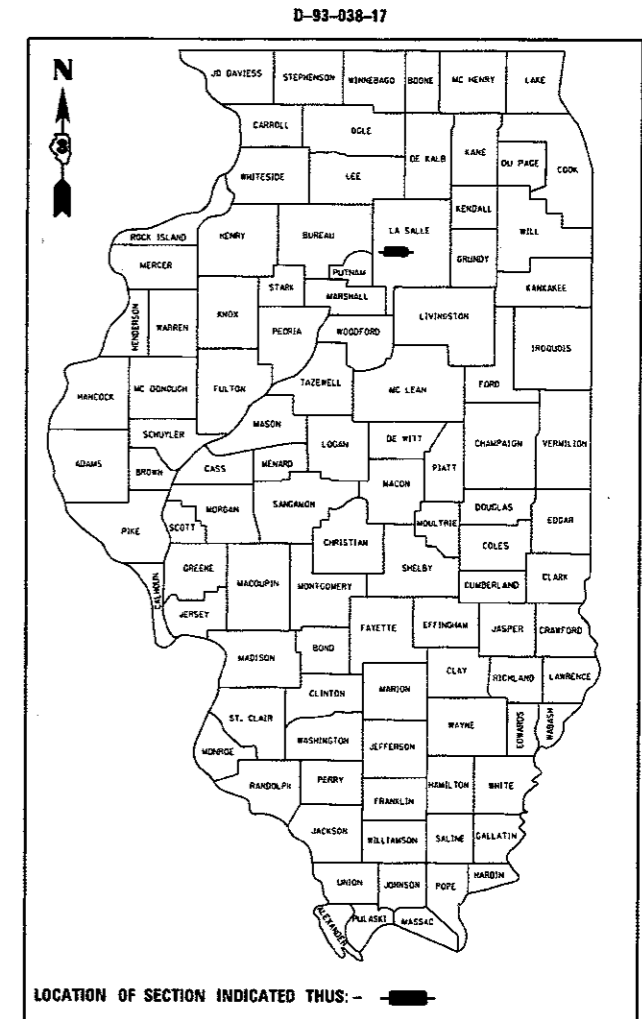
STANDARDS

- 000001-06 STANDARD SYMBOLS, ABBREVIATIONS AND PATTERNS
- 001006 DECIMAL OF AN INCH AND OF A FOOT
- 406201-01 MAILBOX TURNOUT
- 482001-02 HMA SHOULDER ADJACENT TO FLEXIBLE PAVEMENT
- 482006-03 HMA SHOULDER ADJACENT TO RIGID PAVEMENT
- 642006 SHOULDER RUMBLE STRIPS, 8 INCH
- 701006-05 OFF-ROAD OPERATIONS 2L, 2W, 15' (4.5 m) TO 24" (600 mm) FROM PAVEMENT EDGE
- 701311-03 LANE CLOSURE, 2L, 2W, MOVING OPERATIONS - DAY ONLY
- 701326-04 LANE CLOSURE, 2L, 2W, PAVEMENT WIDENING, FOR SPEEDS ≥ 45 MPH
- 701901-07 TRAFFIC CONTROL DEVICES

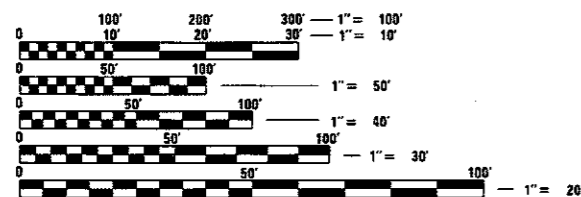
**PROPOSED
HIGHWAY PLANS**

**FAP ROUTE 627 (IL 71)
SECTION (B, L, M) SFY
PROJECT: HSIP-0627(016)
SHOULDER WIDENING AND RUMBLE STRIPS
LASALLE COUNTY**

C-93-040-17



RURAL MINOR ARTERIAL
2015 ADT = 3050
P.V. = 97.0% S.U. = 2.3% M.U. = 0.7%



FULL SIZE PLANS HAVE BEEN PREPARED USING STANDARD ENGINEERING SCALES. REDUCED SIZED PLANS WILL NOT CONFORM TO STANDARD SCALES. IN MAKING MEASUREMENTS ON REDUCED PLANS, THE ABOVE SCALES MAY BE USED.

J.U.L.I.E.
JOINT UTILITY LOCATION INFORMATION FOR EXCAVATION
1-800-892-0123
OR 811

PROJECT ENGINEER: JOE KANNEL, P.E.
UNIT CHIEF: MARC BUDZYNSKI
DISTRICT 3 NO. (815) 434-6131
CONTRACT NO. 66H18

PROJECT BEGINS
JUST EAST OF GUARDRAIL
FOR S.N. 050-0242
LOG MILE 0.00

PROJECT ENDS
JUST WEST OF E 950TH RD
LOG MILE 4.62

GROSS LENGTH = 24,394 FT. = 4.62 MILES
NET LENGTH = 22,651 FT. = 4.29 MILES

STATE OF ILLINOIS
DEPARTMENT OF TRANSPORTATION

SUBMITTED *Dec. 12 2017*
R. Maubel
REGIONAL ENGINEER

Feb 2 2018
[Signature]
ENGINEER OF DESIGN AND ENVIRONMENT

Feb 2 2018
[Signature]
DIRECTOR OF PROGRAM DEVELOPMENT

**PRINTED BY THE AUTHORITY
OF THE STATE OF ILLINOIS**

GENERAL NOTES

THE THICKNESS OF HMA SHOWN ON THE PLANS IS THE NOMINAL THICKNESS. DEVIATIONS FROM THE NOMINAL THICKNESS WILL BE PERMITTED WHEN SUCH DEVIATIONS OCCUR DUE TO IRREGULARITIES IN THE EXISTING SURFACE OR BASE ON WHICH THE HMA IS PLACED.

THE HMA SURFACE OF ALL MAILBOX TURNOUTS, PRIVATE ENTRANCES, COMMERCIAL ENTRANCES, AND SIDE ROADS SHALL BE MADE NEATLY, IN A WORKMANLIKE MANNER, AND SHALL ACCURATELY CONFORM TO THE SHAPES AND DIMENSIONS SHOWN ON THE PLAN DETAILS. IF REQUIRED BY THE ENGINEER, THE CONTRACTOR SHALL SAW CUT THE HMA SURFACE TO CONFORM TO THE SHAPES AND DIMENSIONS SHOWN ON THE PLAN DETAILS. THIS WORK WILL BE INCLUDED IN THE COST OF THE HMA SURFACE.

THE ENGINEER WILL BE THE SOLE JUDGE CONCERNING CURING TIME FOR THE VARIOUS HMA LIFTS.

FOR STABILIZATION, ALL TYPE III BARRICADES WILL REQUIRE A MINIMUM OF FOUR SAND BAGS PER BARRICADE.

SEEDING WILL NOT BE PERMITTED AT ANY TIME WHEN THE GROUND IS FROZEN, WET, OR IN AN UNTILLABLE CONDITION. LOCATIONS TO BE SEEDED WILL BE DETERMINED BY THE ENGINEER.

ANY REFERENCE TO A STANDARD IN THESE PLANS SHALL BE INTERPRETED TO MEAN THE EDITION AS INDICATED BY THE SUBNUMBER SHOWN IN THE LIST OF STANDARDS OR THE COPY INCLUDED IN THESE PLANS.

THE FOLLOWING RATES OF APPLICATION HAVE BEEN USED IN CALCULATING PLAN QUANTITIES:

HMA RESURFACING	112	LBS / SQ YD / IN
-----------------	-----	------------------

ALL DAMAGE TO DEPARTMENT OWNED UNDERGROUND FACILITIES, CAUSED BY THE CONTRACTOR SHALL BE REPAIRED TO THE SATISFACTION OF THE DEPARTMENT AT THE CONTRACTOR'S EXPENSE. THIS SHALL INCLUDE ALL TEMPORARY REPAIRS REQUIRED TO KEEP THE FACILITY OPERATIONAL WHILE MATERIAL IS BEING OBTAINED TO MAKE PERMANENT REPAIRS. SPLICING OF ELECTRIC CABLE WILL NOT BE ALLOWED. ELECTRIC CABLE SHALL BE REPLACED FROM POLE TO POLE OR CONTROLLER.

THE CONTRACTOR SHALL CONTACT JULIE AT LEAST 48 HOURS PRIOR TO EXCAVATION TO DETERMINE WHICH UTILITIES ARE IN THE AREA.

COMMITMENTS:

LOCATION(S):	ENTIRE PROJECT	ENTIRE PROJECT	ENTIRE PROJECT
MIXTURE USE(S):	SHOULDER BOTTOM LIFT(S)	SHOULDER TOP LIFT (2")	MAILBOX TURNOUTS
BINDER GRADE (PG):	PG 64-22	PG 64-22	PG 64-22
DESIGN AIR VOIDS:	4.0% @ N50	4.0% @ N50	4.0% @ N50
MIXTURE COMPOSITION: (MIXTURE GRADATION)	IL-19.0	IL-9.5 FG	IL-9.5 FG
FRICITION AGGREGATE:	-	MIXTURE C	MIXTURE C
MIXTURE WEIGHT:	112.0 LB/SY/IN	112.0 LB/SY/IN	112.0 LB/SY/IN
QUALITY MANAGEMENT PROGRAM:	QC/QA	QC/QA	QC/QA
SUBLOT SIZE:	N/A	N/A	N/A
DENSITY TEST METHOD:	CORES	% GROWTH CURVE	SATISFACTION OF THE ENGINEER

STATE OF ILLINOIS
DEPARTMENT OF TRANSPORTATION
DISTRICT THREE
AS BUILT INFORMATION

SUPERVISING CONSTRUCTION FIELD ENGINEER

RESIDENT ENGINEER / TECHNICIAN

START & END DATES
OF CONSTRUCTION:

INSPECTORS:

STATE OF ILLINOIS
DEPARTMENT OF TRANSPORTATION
DISTRICT THREE

PREPARED BY: Don Beaulieu
DISTRICT STUDIES & PLANS ENGINEER

DATE: 12-12-17

EXAMINED BY: [Signature]
DISTRICT CONSTRUCTION ENGINEER

[Signature]
DISTRICT MATERIALS ENGINEER

[Signature]
DISTRICT OPERATIONS ENGINEER

FILE NAME =	USER NAME = budzynakim	DESIGNED -	REVISED -
plm\118846\BID\INTEG\Illinois.gov\PIW007\Documents\DOT Offices\District 3\Projects\0358\Drawings\18-118-shr-cover.dgn		CHECKED -	REVISED -
Default	PLLOT SCALE = 100.0000 / 1 in.	DATE -	REVISED -
	PLLOT DATE = 12/6/2017		

STATE OF ILLINOIS
DEPARTMENT OF TRANSPORTATION

GENERAL NOTES

SCALE: SHEET OF SHEETS STA. TO STA.

F.A.P. RTE.	SECTION	COUNTY	TOTAL SHEETS	SHEET NO.
627	SECTION (B.L.M) SFY	LASALLE	6	2
			CONTRACT NO. 66H18	
ILLINOIS FED. AID PROJECT				

CONSTR. CODE

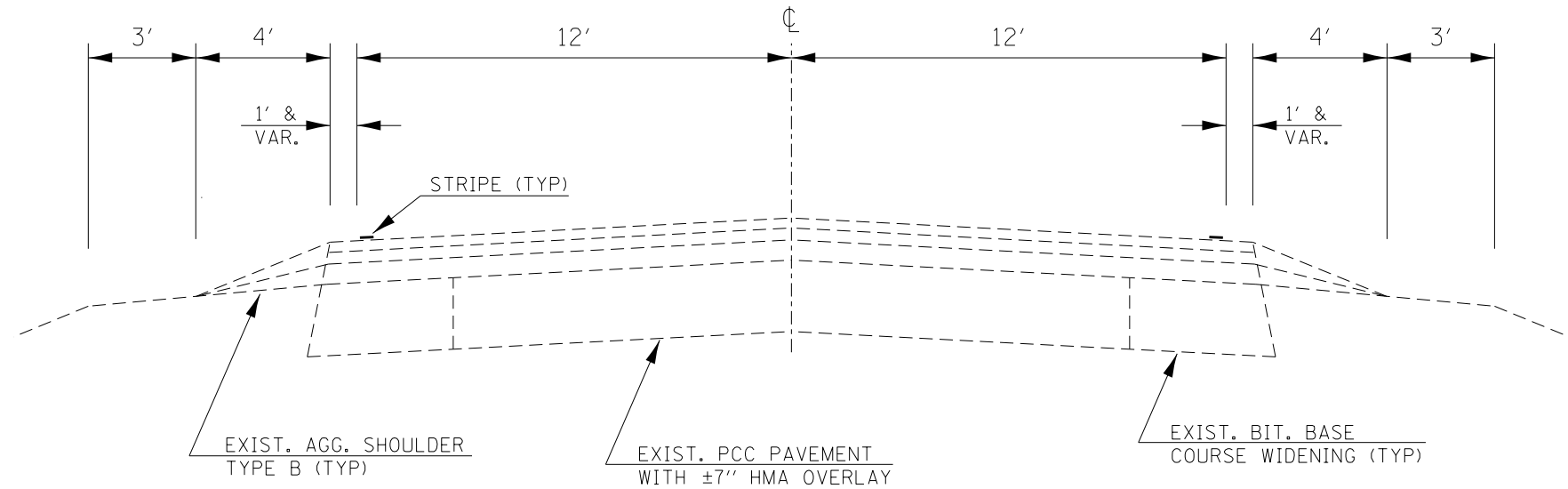
90110 FED/1ST

CODE NO.	ITEM	UNIT	TOTAL QUANTITY	ROADWAY	
				0021	RURAL
20200600	EXCAVATING AND GRADING EXISTING SHOULDER	UNIT	441		441
40600290	BITUMINOUS MATERIALS (TACK COAT)	POUND	8713		8713
40800050	INCIDENTAL HOT-MIX ASPHALT SURFACING	TON	8.2		8.2
44000157	HOT-MIX ASPHALT SURFACE REMOVAL, 2"	SQ YD	72		72
48203029	HOT-MIX ASPHALT SHOULDERS, 8"	SQ YD	19570		19570
64200108	SHOULDER RUMBLE STRIPS, 8 INCH	FOOT	44035		44035
* 66900200	NON-SPECIAL WASTE DISPOSAL	CU YD	750		750
* 66900450	SPECIAL WASTE PLANS AND REPORTS	LSUM	1.0		1.0
* 66900530	SOIL DISPOSAL ANALYSIS	EACH	8		8
67100100	MOBILIZATION	LSUM	1.0		1.0
70100500	TRAFFIC CONTROL AND PROTECTION, STANDARD 701326	LSUM	1.0		1.0
70103815	TRAFFIC CONTROL SURVEILLANCE	CAL DA	5		5
* 78001110	PAINT PAVEMENT MARKING - LINE 4"	FOOT	97580		97580
X0800001	SHOULDER REMOVAL (SPECIAL)	SQ YD	19570		19570
15 Z0030850	TEMPORARY INFORMATION SIGNING	SQ FT	42		42

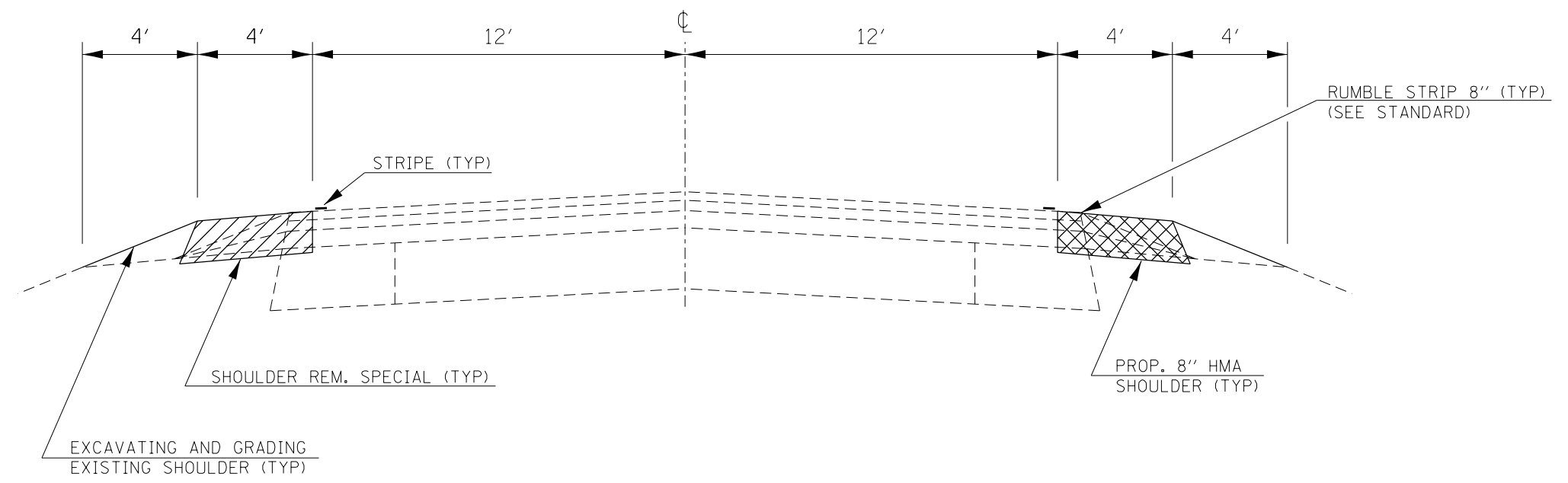
* SPECIALTY ITEM

FILE NAME =	USER NAME = budzgnakim	DESIGNED -	REVISED -	STATE OF ILLINOIS DEPARTMENT OF TRANSPORTATION	SUMMARY OF QUANTITIES	F.A.P. RTE.	SECTION	COUNTY	TOTAL SHEETS	SHEET NO.	
ps\\11804EB10INTEGallinois.gov\PIWDDT\Documents\DOT Offices\District 3\Projects\0368\Drawings\B366H18-shr-cover.dgn	PLLOT SCALE = 100.0000' / 1"	CHECKED -	REVISED -			627	SECTION (B.L.M) SFY	LASALLE	6	3	
Default	PLLOT DATE = 12/13/2017	DATE -	REVISED -			SCALE:	SHEET OF SHEETS	STA. TO STA.	CONTRACT NO. 66H18		
						[ILLINOIS] FED. AID PROJECT					

REV



EXISTING TYPICAL SECTION
LM 0.00 TO LM 4.62



PROPOSED TYPICAL SECTION
LM 0.00 TO LM 4.62

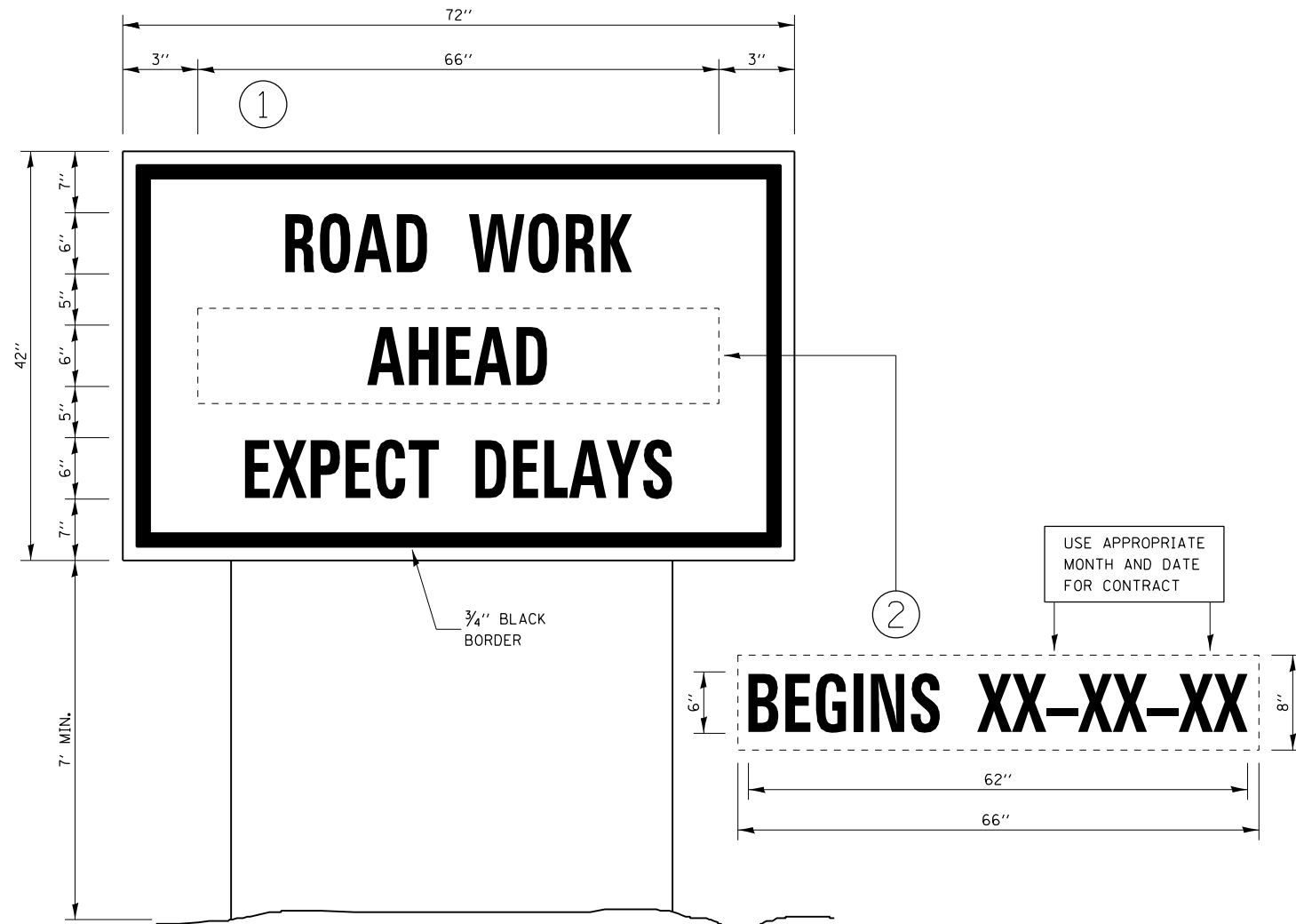
FILE NAME =	USER NAME = budzynskm	DESIGNED -	REVISED -	STATE OF ILLINOIS DEPARTMENT OF TRANSPORTATION	TYPICAL SECTIONS			F.A.P. RTE.	SECTION	COUNTY	TOTAL SHEETS	SHEET NO.
pw:\IL\084EBIDINTEG.illinois.gov\PWIDOT\Documents\DOT Offices\District 3\Projects\0366\DRAWING\0366H18-sht-cover.dgn	PLOT SCALE = 100.0000' / 1in.	CHECKED -	REVISED -					627	SECTION (B,L,M) SFY	LASALLE	6	4
Default	PLOT DATE = 12/6/2017	DATE -	REVISED -		SCALE: SHEET OF SHEETS STA. TO STA.			CONTRACT NO. 66H18				
ILLINOIS FED. AID PROJECT												

SHOULDER REMOVAL & REPLACEMENT SCHEDULE									
LOCATION		SIDE	LENGTH	SHOULDER REMOVAL (SPECIAL)	HMA SHOULDERS 8"	BIT MTLs TACK COAT	SHOULDER RUMBLE STRIPS 8"	*PAINT PVMT MARKING WHITE 4"	
L.M.	TO	L.M.	LT / RT	FOOT	SQ YD	SQ YD	POUND	FOOT	FOOT
0.00	TO	0.46	LT & RT	2429	2159	2159	972	4858	9716
0.46	TO	0.47	LT	53	23	23	5	53	212
GUARDRAIL OMISSION									845
0.51	TO	0.68	RT	898	399	399	90	898	3591
CURB AND GUTTER OMISSION									2324
0.79	TO	3.02	LT & RT	11774	10466	10466	4710	23549	47098
3.02	TO	3.03	RT	53	23	23	5	53	212
INTERSECTION OMISSION									3802
3.21	TO	3.26	LT	264	117	117	26	264	1056
3.26	TO	4.62	LT & RT	7181	6383	6383	2872	14362	28724
TOTAL				22651	19570	19570	8680	44035	97580

*QUANTITY REPRESENTS TWO SEPARATE APPLICATIONS. NOTE THAT EDGE LINES ARE STILL PAINTED IN THE SHOULDER OMISSION AREAS

MAILBOX TURNOUT REMOVAL & REPLACEMENT SCHEDULE					
L.M. / SIDE		AREA	HMA SURF REMOVAL 2"	INCIDENTAL HMA SURF 2"	BIT MTLs TACK COAT
		SQ YD	SQ YD	TON	POUND
1.32	RT	47	20	2.3	9
1.64	RT	68	33	3.7	15
3.52	LT	34	4	0.5	2
3.82	LT	36	15	1.7	7
TOTAL		185	72	8.2	33

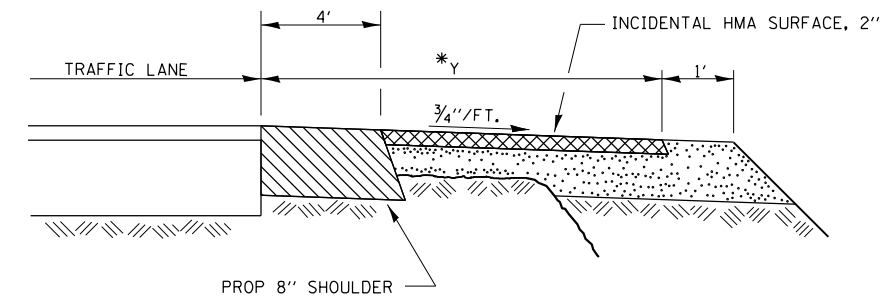
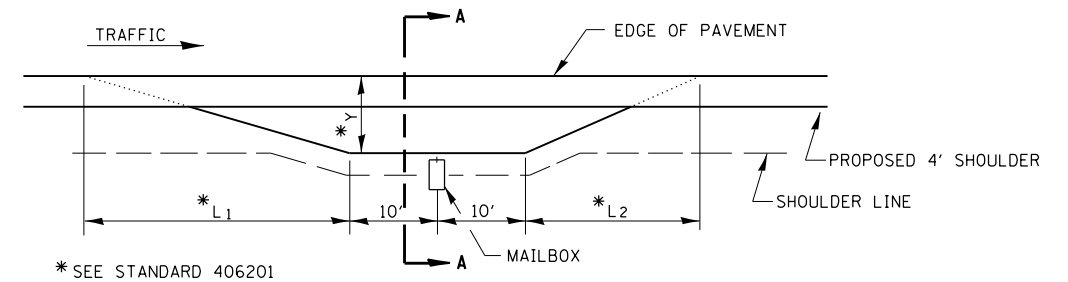
THE FIRST 4 FEET OF THE MBTO ADJACENT TO THE TRAVELED WAY IS PAID AS SHOULDER REMOVAL (SPECIAL) AND HMA SHOULDERS 8"
THE REMAINING AREA OF THE MBTO IS PAID AS HMA SURFACE REMOVAL 2" AND INCIDENTAL HMA SURFACE 2"



TEMPORARY INFORMATION SIGNING

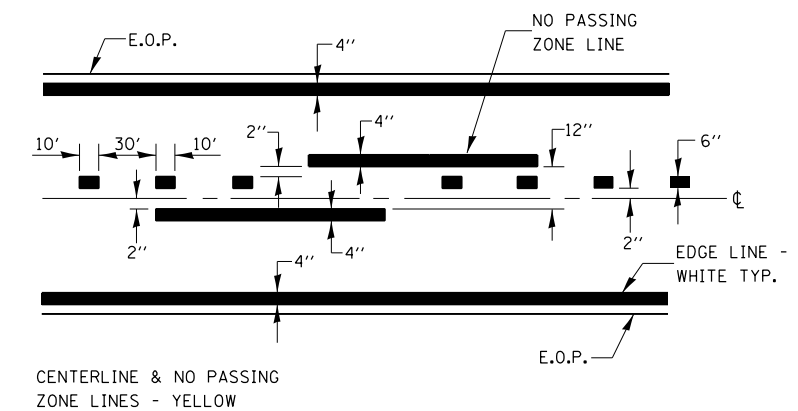
NOTES:

1. USE 6" D BLACK LETTERING ON FLOURESENT ORANGE BACKGROUND.
2. ERECT SIGNS AT LOCATIONS IN ADVANCE OF THE "ROAD CONSTRUCTION AHEAD" SIGNS AS DIRECTED BY THE ENGINEER.
3. ERECT SIGN ① WITH INSTALLED PANEL ② A MINIMUM OF ONE WEEK PRIOR TO THE START OF THE LANE CLOSURE.
4. REMOVE PANEL ② ON THAT DATE.
5. SEE SPECIAL PROVISION "TEMPORARY INFORMATION SIGNING" FOR ADDITIONAL INFORMATION.
6. WILL BE PAID FOR PER SQ FT AS "TEMPORARY INFORMATION SIGNING". EACH SIGN = 21 SQ FT AND THE DATE PANEL ② WILL NOT BE MEASURED SEPARATELY FOR PAYMENT.



SECTION A-A

RURAL MAILBOX TURNOUT DETAILS (NTS)



PAVEMENT MARKING

FILE NAME =	USER NAME = budzynskim	DESIGNED -	REVISED -	STATE OF ILLINOIS DEPARTMENT OF TRANSPORTATION	DETAILS			F.A.P. RTE.	SECTION	COUNTY	TOTAL SHEETS	SHEET NO.
pw:\11\084EBIDINTEG.illinois.gov\PIWIDOT\Documents\IDOT Offices\District 3\Projects\0366\DRAWING\0366H18-sht-cover.dgn	PLOT SCALE = 100.0000' / 1in.	CHECKED -	REVISED -					627	SECTION (B,L,M) SFY	LASALLE	6	6
Default	PLOT DATE = 12/6/2017	DATE -	REVISED -		SCALE: SHEET OF SHEETS STA. TO STA.			CONTRACT NO. 66H18				
							ILLINOIS FED. AID PROJECT					