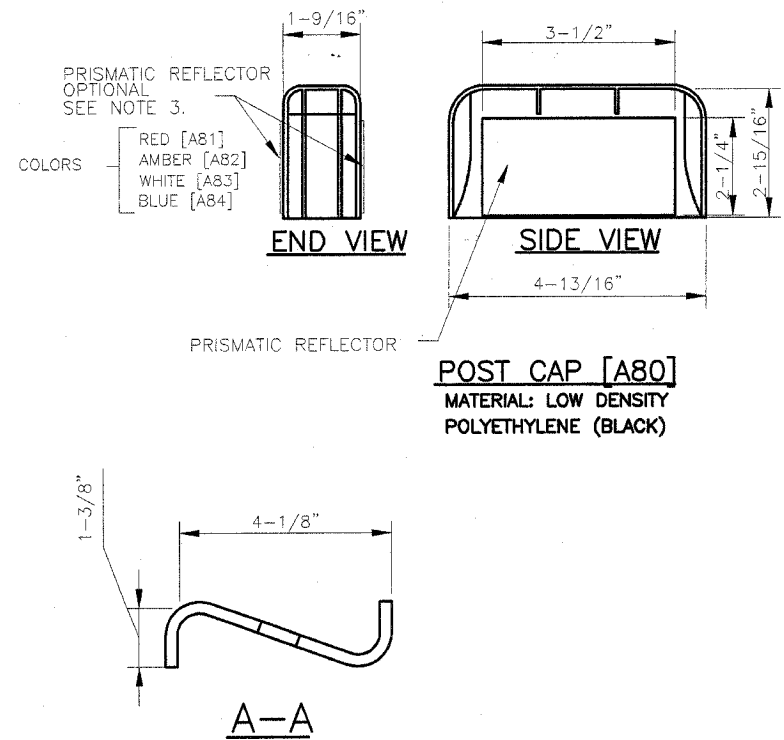
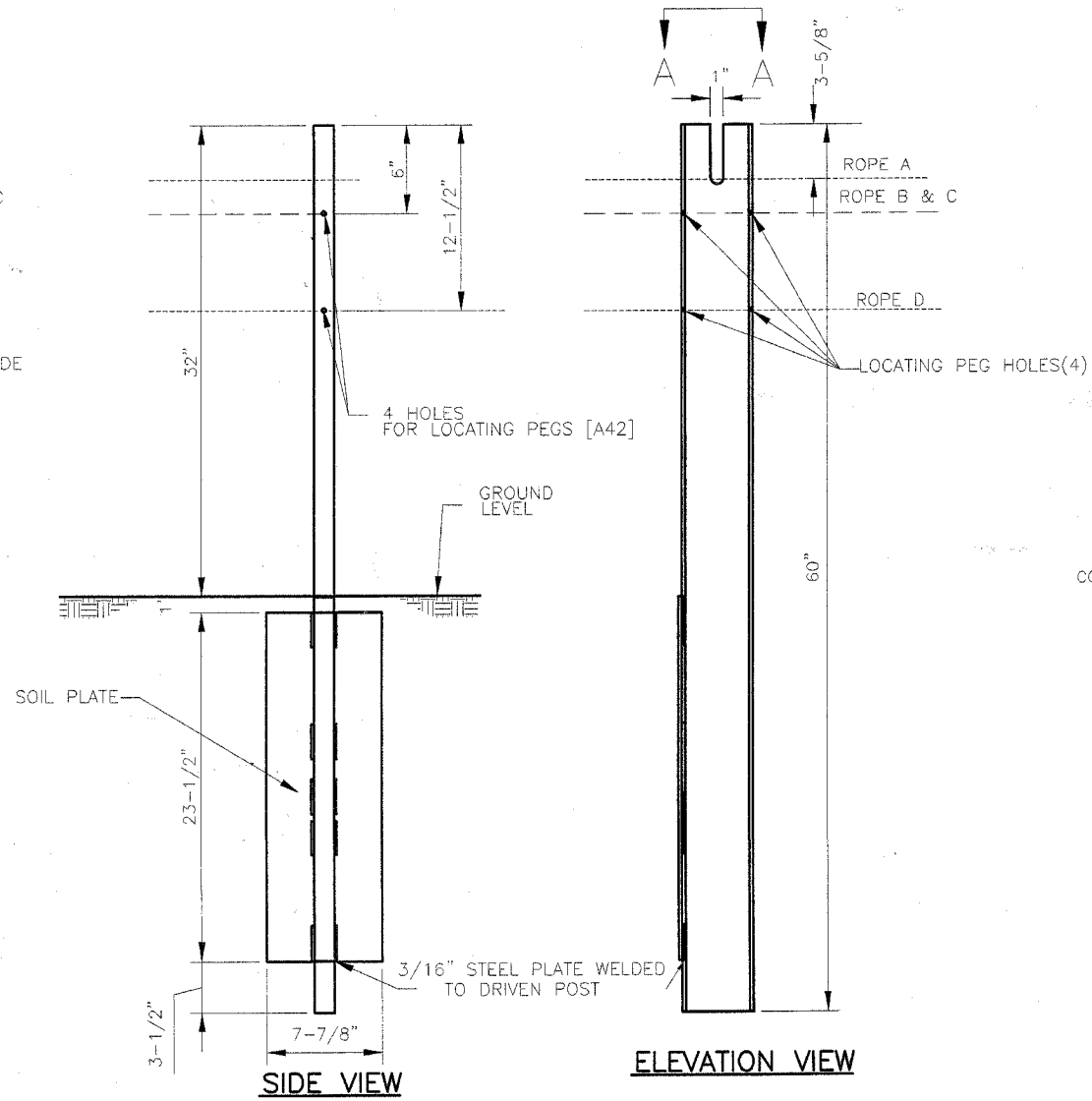
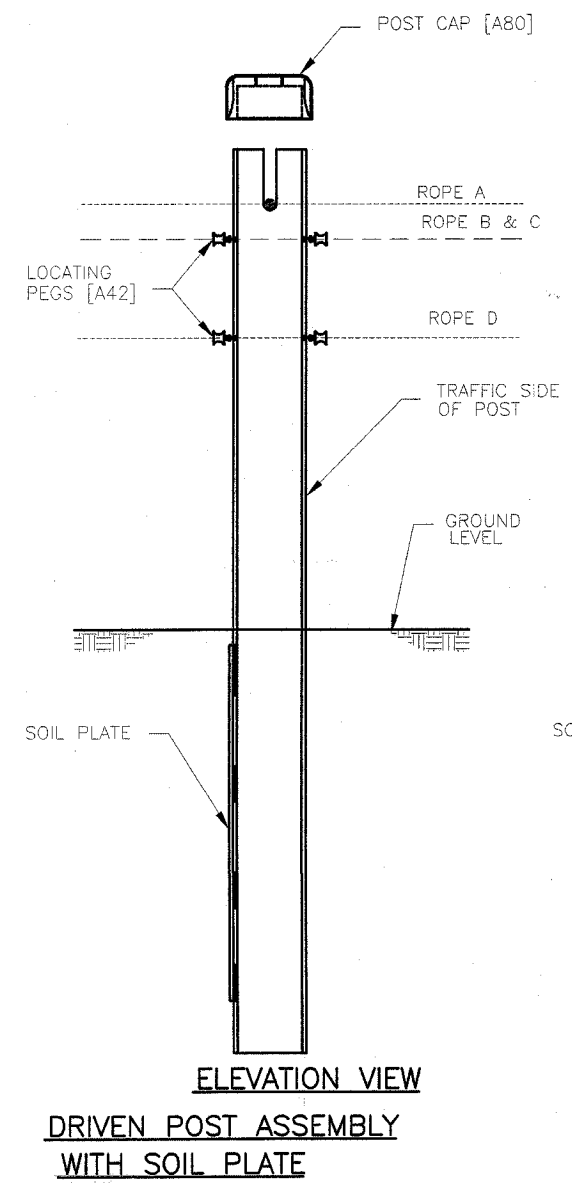
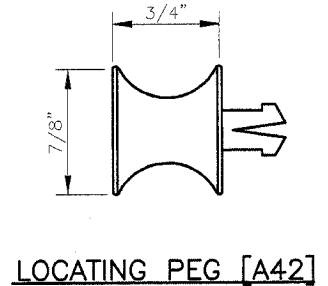
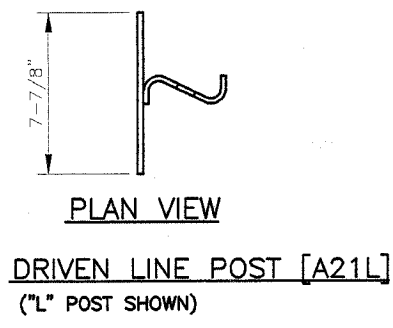
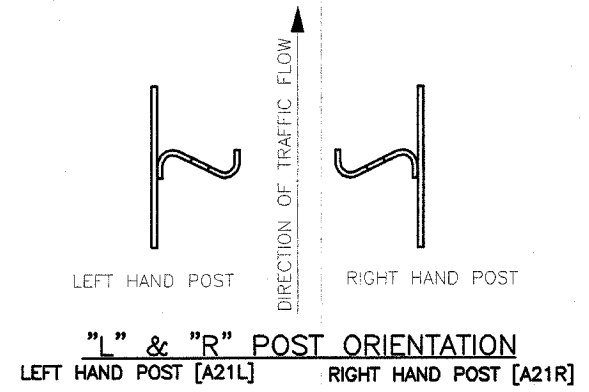


FBI	SECTION	TOTAL	SHEET
RTE	2005-0381	SHEETS	NO.
STA	COOKWILL	58	53
FED. ROAD DIST. NO.	ILLINOIS	FED. AID PROJECT	
CONTRACT NO. 60A09			



- NOTES:
1. RADIUS EDGE OF POSTS SHALL BE ON THE APPROACH SIDE OF TRAFFIC.
 2. THREE LOCATING PEGS PER POST ARE USED FOR 4-ROPES & TWO FOR 3-ROPES.
 3. PRISMATIC REFLECTIVE SHEETING (ADHESIVE BACK) WHEN SPECIFIED SHALL BE FIELD APPLIED. SPECIFY COLOR, POST INTERVAL AND SINGLE OR DOUBLE SIDED.
 4. ROPES B, C, AND D INTERWEAVE BETWEEN POSTS (4-ROPES).



The information herein is proprietary to BRIFEN USA, and shall not be disclosed, duplicated or used otherwise without the express written consent of BRIFEN USA, Inc.

BRIFEN★USA INC.

Revisions			DRIVEN LINE POST DETAIL (TL-3, 4 -ROPES SHOWN)		
No.	Date	By	Date	Drawn By	Scale
1.	7.21.05		5.17.05	Manita Workman	None
2.	8.01.05	MW			
3.	8.04.05	MW	VERSION 8.8		
4.	10.10.05	MW			
5.	12.07.05	MW	Dwg. No.	WRSF-05-206a	Sheet No. 6 of 11