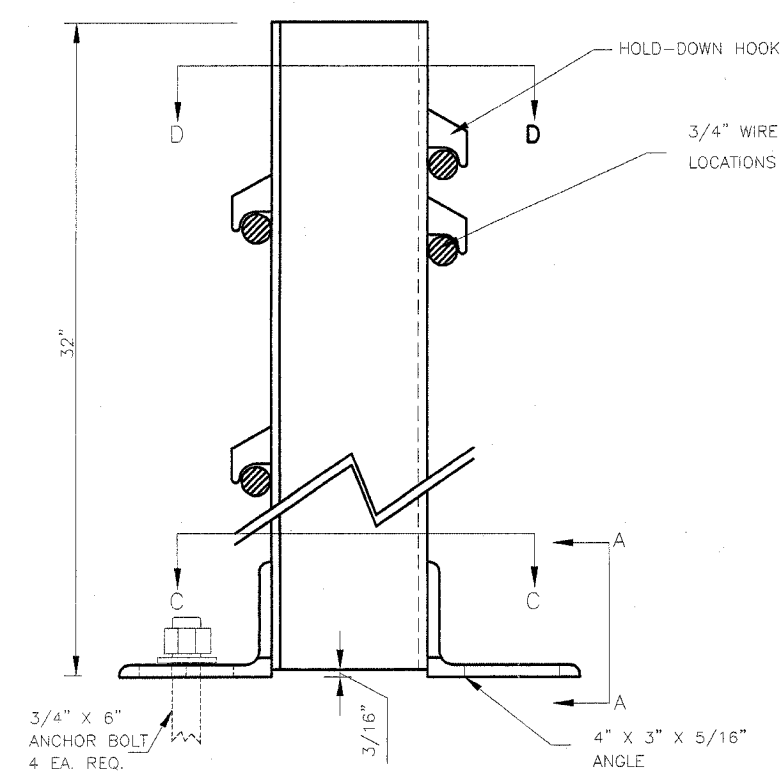
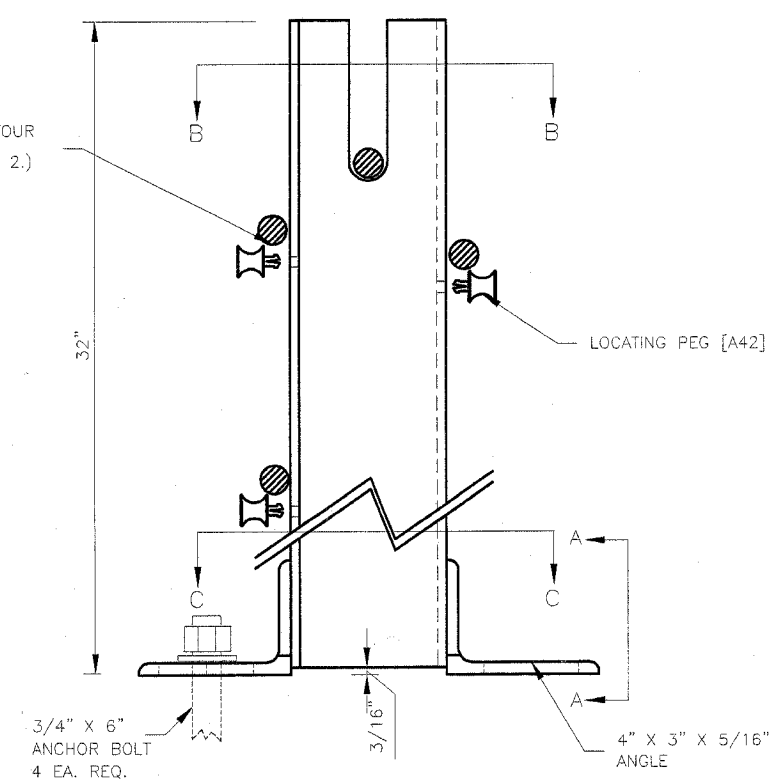


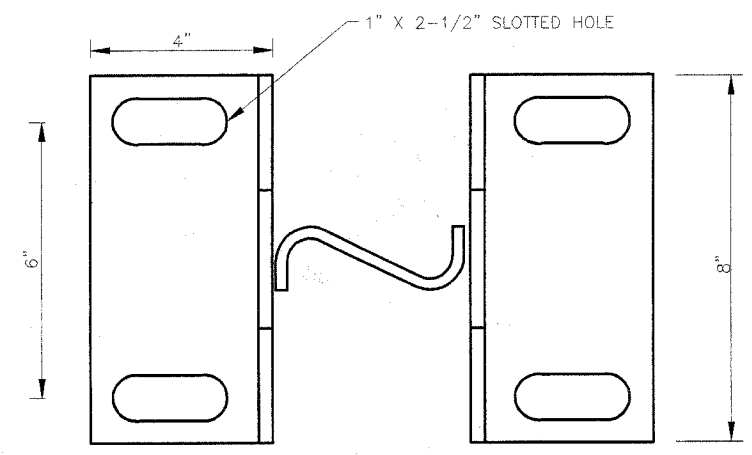
FBI	SECTION	COUNTY	TOTAL SHEETS
RTE 57	2006-0391	COOK/MILL	58
STA. 600+00.00			54
CONTRACT NO. 60A09			



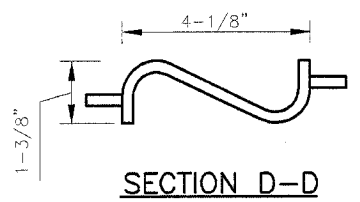
**HOLD-DOWN SURFACE MOUNT POST**  
(LEFT-HAND SHOWN)



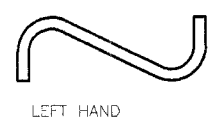
**STANDARD SURFACE MOUNT POST**  
(LEFT-HAND SHOWN)



**SECTION C-C**

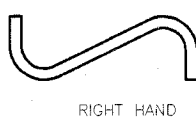


**SECTION D-D**



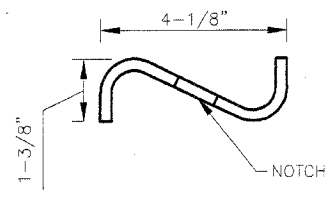
LEFT HAND

DIRECTION OF TRAFFIC FLOW

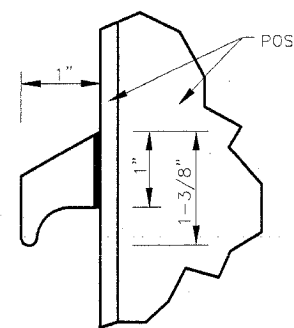


RIGHT HAND

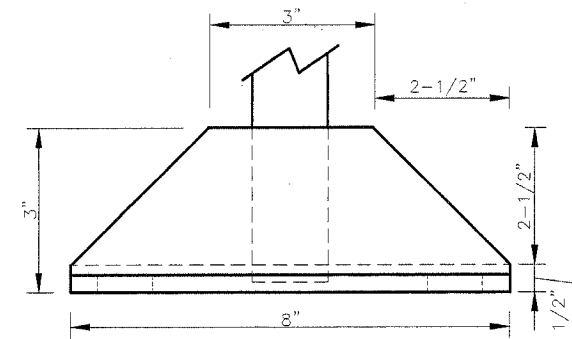
**POST ORIENTATION**



**SECTION B-B**



**HOLD-DOWN HOOK**



**SECTION A-A**

**NOTES:**

- ANCHOR BOLTS SHALL BE B7, GALVANIZED ALL-THREAD, SET INTO SURFACE WITH AN APPROVE EPOXY PER MANUFACTURER'S RECOMMENDATIONS. EACH BOLT TO HAVE ONE ASTM-194 GALVANIZED HS HEX NUT AND ONE GALVANIZED HARD ROUND FLAT ASTM-F436 WASHER.
- ROPE HEIGHTS PER BRIFEN USA DRAWING NO. 3, 4 OR 5 (TL-3 OR TL-4).
- DETAILS SHOWN ARE FOR 4-ROPES TL-3 SYSTEM. SIMILAR DESIGN USED FOR 3-ROPES TL-3 AND FOR TL-4 SYSTEMS (ROPE HEIGHTS & POST SIZE VARY).

The information herein is proprietary to BRIFEN USA, and shall not be disclosed, duplicated or used otherwise without the express written consent of BRIFEN USA, Inc.

Revisions			SURFACE MOUNT POSTS (4-ROPES, TL-3)		
No.	Date	By	Date	Drawn By	Scale
1.	7.21.05	MW	5.17.05	Manita Workman	None
2.	8.01.05	MW			
3.	8.04.05	MW			
4.	10.10.05	MW			
5.	12.07.05	MW			
				VERSION 8.8	
			Dwg. No.	WRSF-05-207a	
					Sheet No. 7 of 11

Rev. Sheet 2-28-06

2-27-06