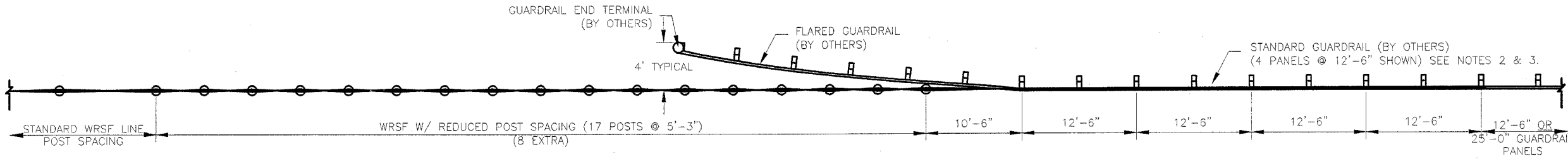
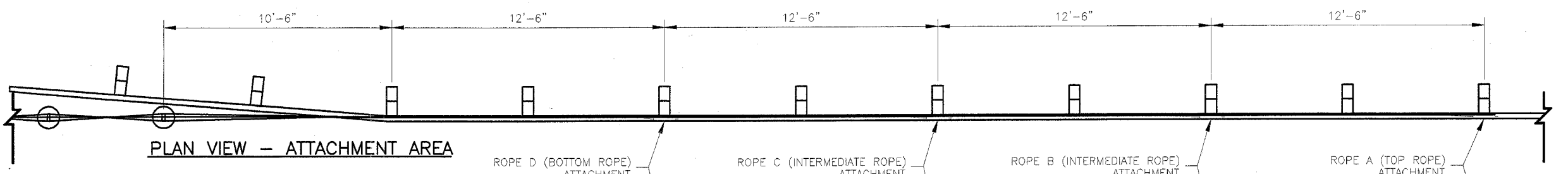


FBI	SECTION	COUNTY	TOTAL SHEETS
57	2005-0381	COOKWILL	98
STATION	STA.	STATION	SHEET NO.
			57

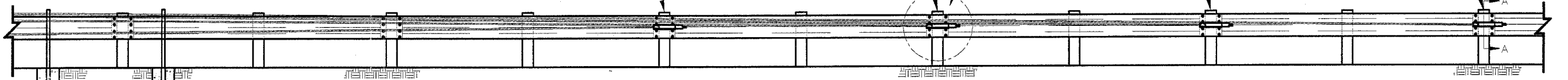
CONTRACT NO. 60A09



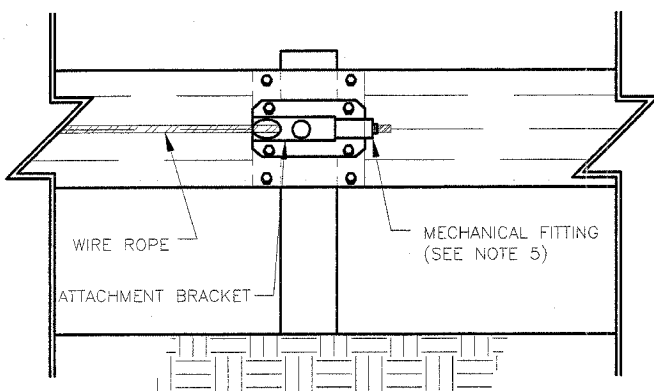
PLAN VIEW



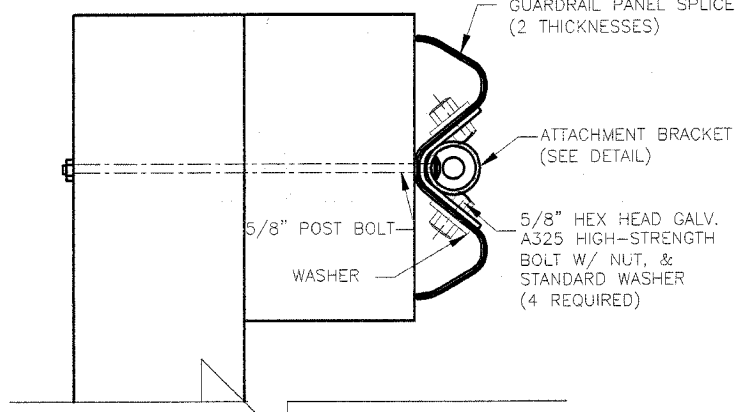
PLAN VIEW - ATTACHMENT AREA



FRONT ELEVATION VIEW - ATTACHMENT AREA (4-ROPES SHOWN; 3-ROPES SIMILAR)

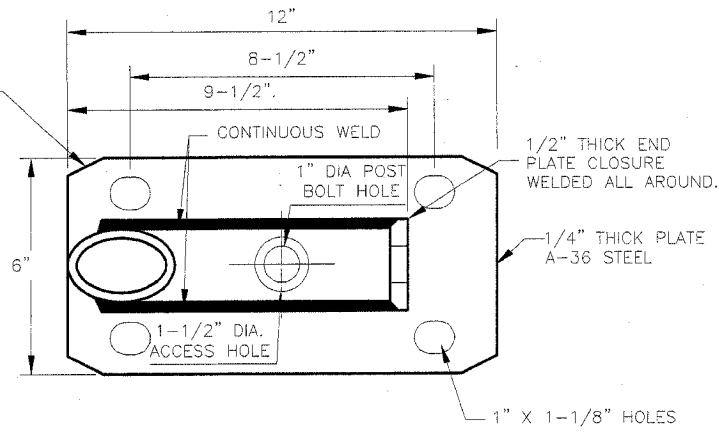


VIEW B

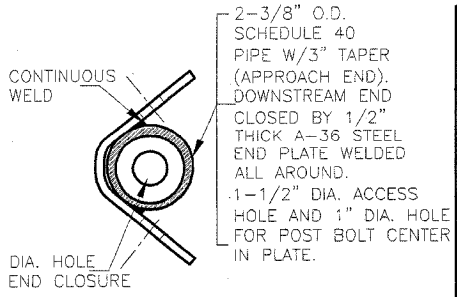


SECTION A-A (WOOD POST SHOWN)

WIRE ROPE ATTACHMENT DETAILS



ATTACHMENT BRACKET DETAIL SIDE VIEW



ATTACHMENT BRACKET DETAIL END VIEW

The information herein is proprietary to BRIFEN USA, and shall not be disclosed, duplicated or used otherwise without the express written consent of BRIFEN USA, Inc.

BRIFEN★USA INC.

Revisions			WRSF ATTACHMENT TO GUARDRAIL		
No.	Date	By	Date	Drawn By	Scale
1.	8.04.05	MW	7.06.05	Manita Workman	None
2.	8.31.05	MW			
3.	10.10.05	MW	VERSION 8.8		
4.	12.16.05	MW			
5.			Dwg. No.	WRSF-05-210a	Sheet No.
					10 of 11

- NOTES:
1. GUARDRAIL END TERMINAL TO BE CRASHWORTHY (MELT, ELT OR OTHER).
 2. GUARDRAIL PANELS IN WRSF ATTACHMENT AREA TO BE STANDARD 12GA (MIN). PANELS. CONNECTIONS TO BE MADE AT GUARDRAIL PANEL SPLICE POINTS ONLY.
 3. TO ASSURE FIRM ANCHORAGE FOR THE WRSF, SLACK IN GUARDRAIL SPLICES MUST BE REMOVED BY LOOSENING DOWNSTREAM GUARDRAIL SPLICE BOLTS, PULLING GUARDRAIL TOWARD THE WRSF ATTACHMENT AREA & RE-TIGHTENING THE SPLICE BOLTS.
 4. ATTACHMENT BRACKET GALVANIZED TO A-123 AFTER FABRICATION.
 5. FACTORY SWAGED-ON 3/4" THREADED ENDS, TOGETHER WITH HEX NUT AND 2" DIA. FLAT WASHER MAY BE USED IN LIEU OF MECHANICAL FITTING.

Rev. Sheet 2-28-06