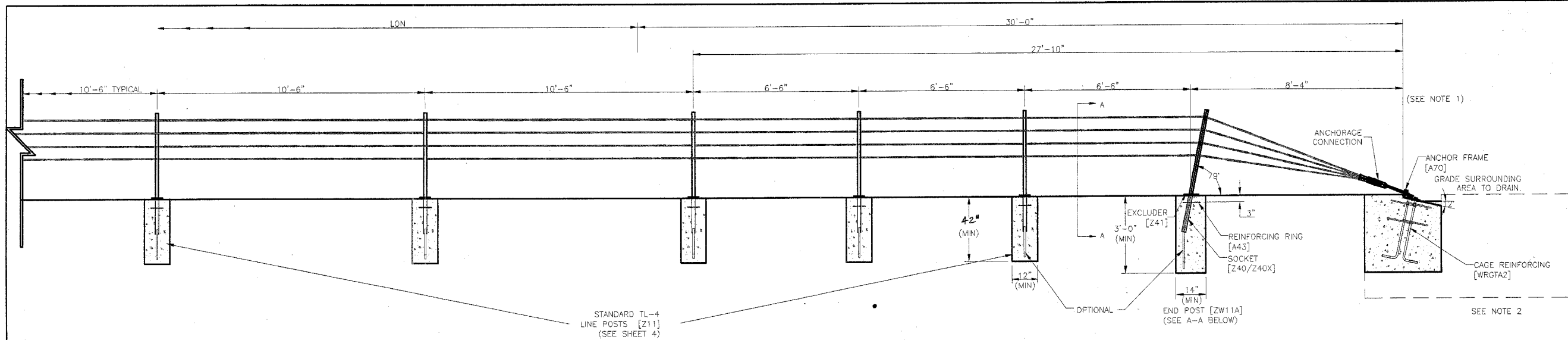
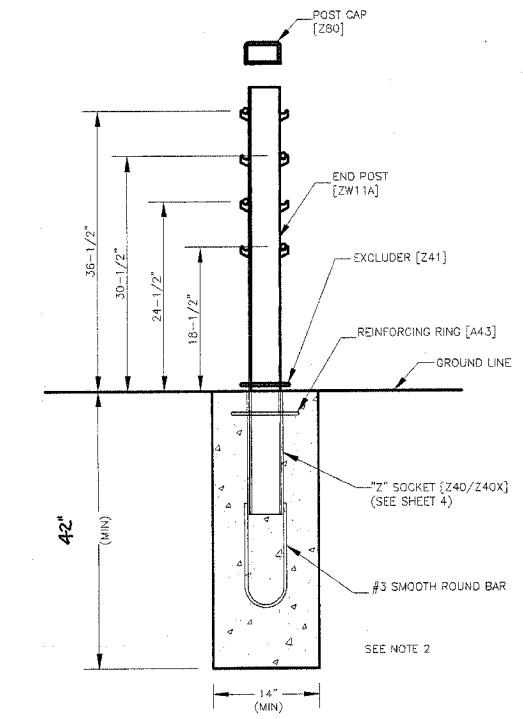


FBI	SECTION	COUNTY	TOTAL
RTE	2005-0381	COOK/MILL	SHEETS
SEA			58
CONTRACT NO. 80A08			58
STA.			
TILINGS			
FED. AID PROJECT			



WRGT-RD TERMINAL
(SEE NOTE 1)

THE PROPOSED DEPTHS OF THE CONCRETE SOCKETED FOUNDATIONS AS SHOWN IN THE BRIFEN USA DETAILS SHALL BE 42" (MINIMUM).



END POST & FOUNDATION DETAIL
SECTION A-A

- NOTE:
- MAY BE USED ON ANY TL-4 WRSF LOCATION SHIELDED FROM TRAFFIC (EXITING ENDS OF BRIDGES, ETC), OR WITHIN HORIZONTAL CLEAR ZONE ON DOWNSTREAM ENDS ONLY IF HEAD-ON IMPACTS ARE UNLIKELY.
 - END ANCHORAGE AND POST FOUNDATION SIZES ARE DETERMINED BY SOIL CLASSIFICATION AND CONDITION AS WELL AS TEMPERATURE EXTREMES. REFER TO PRODUCT MANUAL OR CONTACT BRIFEN USA REPRESENTATIVE FOR TECHNICAL ASSISTANCE.
 - FOR ADDITIONAL INFORMATION, CONTACT BRIFEN USA, INC. AT 1-866-427-4336 TOLL FREE.

The information herein is proprietary to BRIFEN USA, and shall not be disclosed, duplicated or used otherwise without the express written consent of BRIFEN USA, Inc.

BRIFEN★USA INC.

Revisions			WRGT-RD END TERMINALS (FOR TL-4 SYSTEM)		
No.	Date	By	Date	Drawn By	Scale
1.	8.01.05	MW	7.21.05	Manita Workman	None
2.	8.08.05	MW	VERSION 8.8		Sheet No.
3.	10.10.05	MW			
4.	12.16.05	MW	Dwg. No.	WRSF-05-211a	11 of 11
5.					