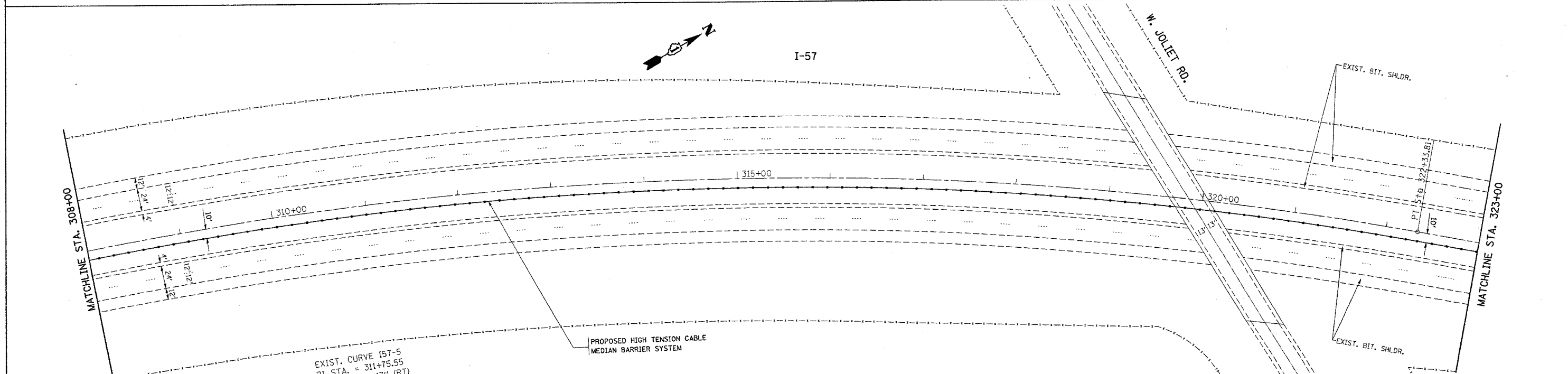
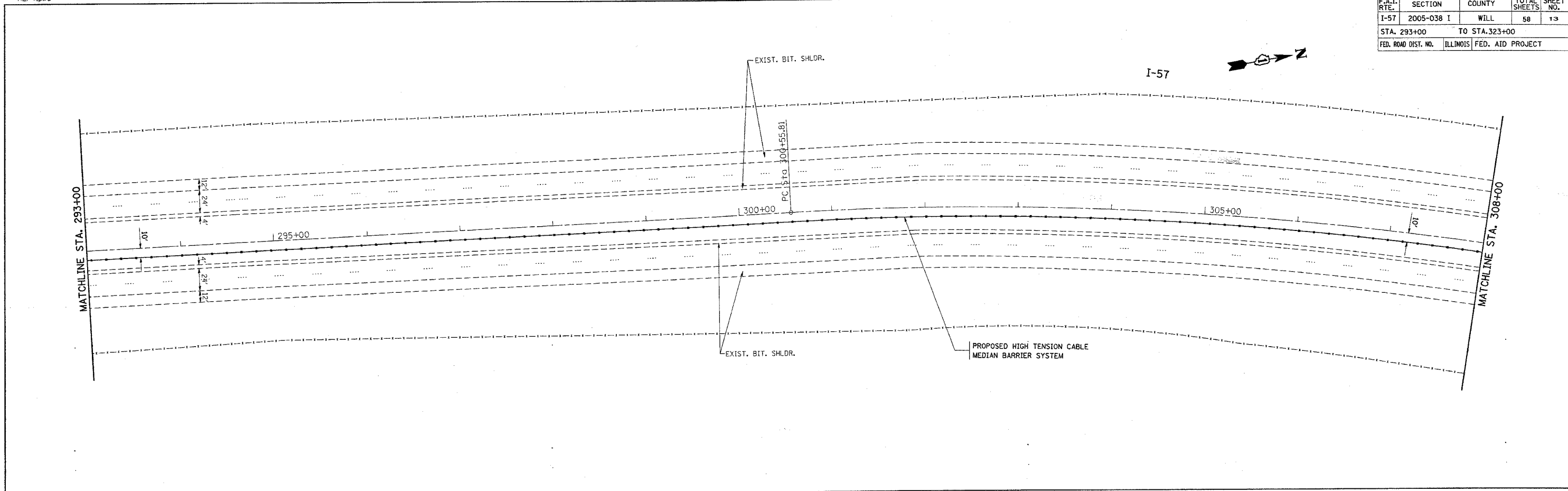


*REF-topol4
*REF-topol5

CONTRACT NO. 60A09

F.A.I. RTE.	SECTION	COUNTY	TOTAL SHEETS	SHEET NO.
I-57	2005-038 I	WILL	58	13
STA. 293+00		TO STA. 323+00		
FED. ROAD DIST. NO.		ILLINOIS FED. AID PROJECT		



EXIST. CURVE I57-5
 PI STA. = 311+75.55
 $\Delta = 32^\circ 47' 47''$ (RT)
 $D = 1^\circ 30' 21''$
 $R = 3,805.00'$
 $T = 1,119.74'$
 $L = 2,178.00'$
 $E = 161.34'$
 $\theta =$
 $T.R. =$
 S.E. RUN =
 P.C. STA. = 300+55.81
 P.T. STA. = 322+33.81

REVISIONS	
NAME	DATE

ILLINOIS DEPARTMENT OF TRANSPORTATION
 I-57 (I-80 TO COUNTY LINE RD.)
 PROPOSED PLAN

SCALE: VERT. 1"=50'
 HORIZ. 1"=50'
 DATE 1/4/2006
 DRAWN BY
 CHECKED BY

PLOT DATE = 1/4/2006
 FILE NAME = G:\Projects\2005\I-57\dwg\so.dgn
 USER NAME = jstankov