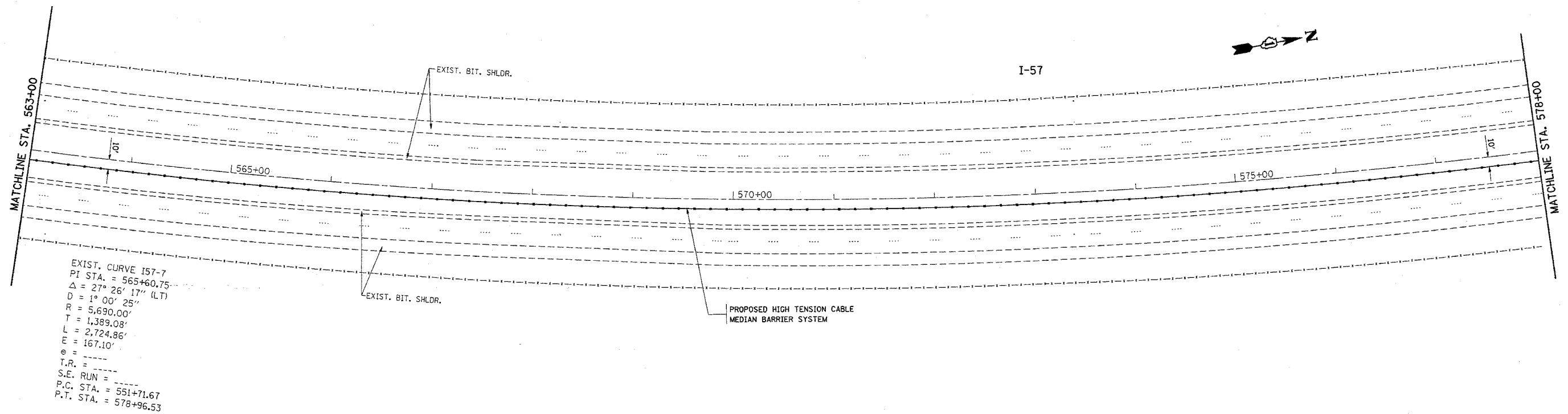


*REF-Ap032

CONTRACT NO. 60A09

F.A.I. RTE.	SECTION	COUNTY	TOTAL SHEETS	SHEET NO.
I-57	2005-038 I	WILL	58	24
STA. 563+00		TO STA. 578+00		
FED. ROAD DIST. NO.	ILLINOIS	FED. AID PROJECT		



REVISIONS	
NAME	DATE

ILLINOIS DEPARTMENT OF TRANSPORTATION
 I-57 (I-80 TO COUNTY LINE RD.)
 PROPOSED PLAN

SCALE: VERT. 1"=50'
 HORIZ. 1"=50'
 DATE 1/4/2006

DRAWN BY
 CHECKED BY

DATE = 1/4/2006
 FILE NAME = C:\p\051127805\sh-dwg-aadgn
 PLOT SCALE = 56.0000' / IN.
 USER NAME = jnszkrf