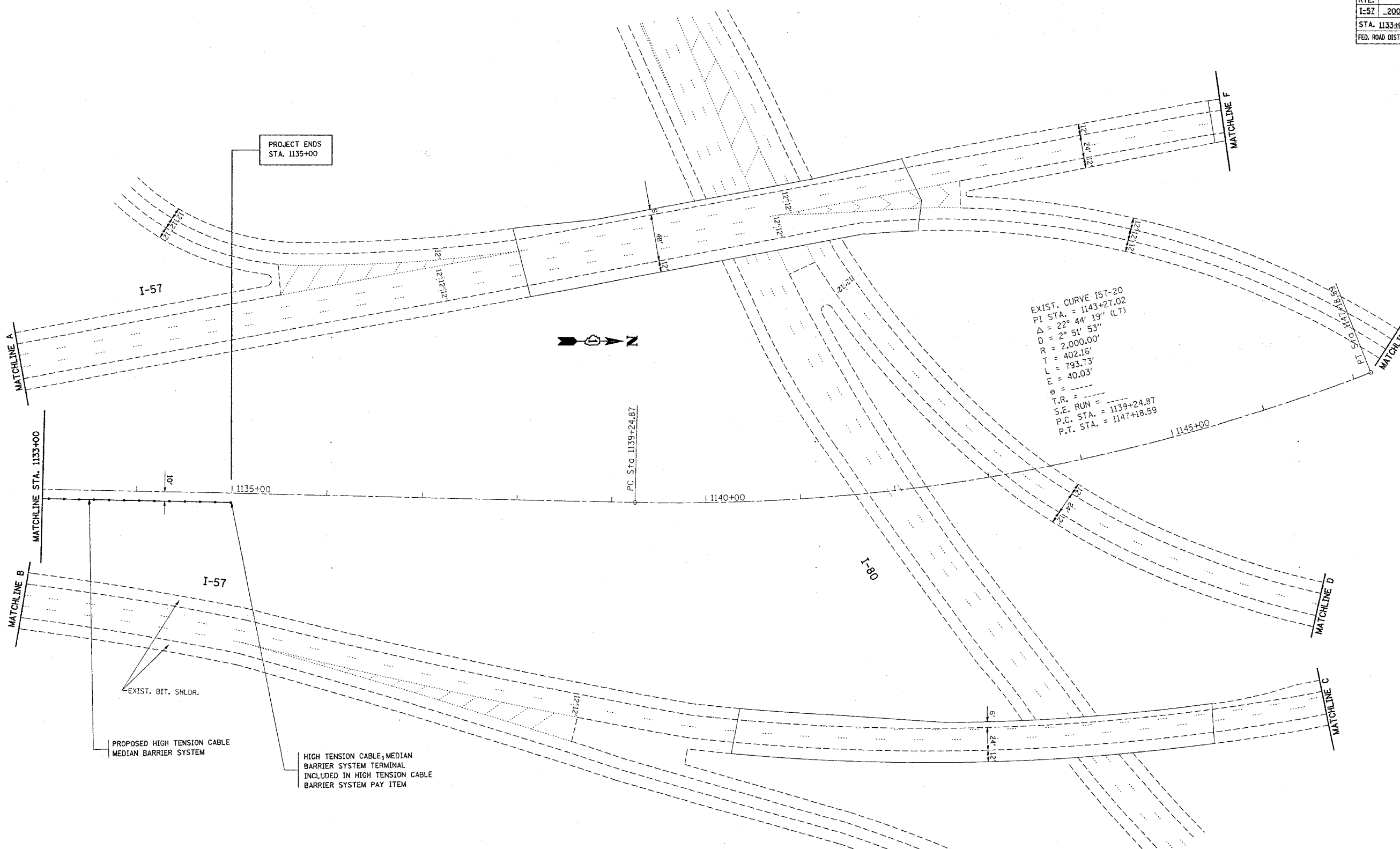


CONTRACT NO.			
F.A.I. RTE.	SECTION	COUNTY	TOTAL SHEETS
I-57	2005-038.1	WILL	58
STA. 1133+00		TO STA. 1147+18.59	
FED. ROAD DIST. NO.		ILLINOIS	FED. AID PROJECT



PLOT DATE = 1/4/2006
 FILE NAME = h:\projects\1137880\h-rd\p\p06.dgn
 PLOT SCALE = 50.0000' / 1" IN.
 USER NAME = hzsharf

REVISIONS	
NAME	DATE

ILLINOIS DEPARTMENT OF TRANSPORTATION
 PLAN I-57
 (I-80 TO COUNTYLINE RD.)
 PROPOSED PLAN

SCALE: VERT.
 HORIZ.
 DATE 1/4/2006

DRAWN BY
 CHECKED BY