

DISTRICT ONE BUREAU OF MAINTENANCE: J. STUMPNER
MAINTENANCE LANDSCAPE DESIGNER: R. WANNER / T. JACKSON (847) 705-4171

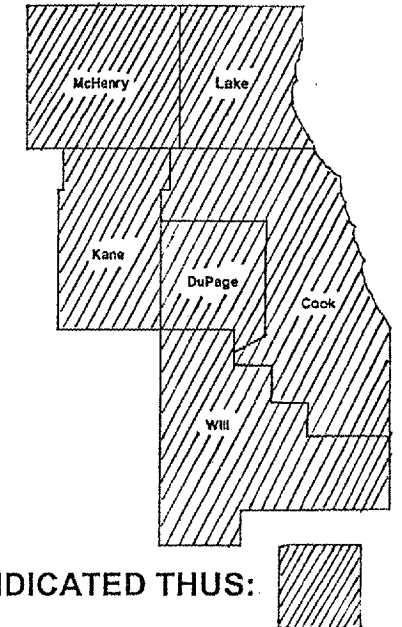
ROUTE	SECTION	COUNTY	TOTAL SHEETS	S
VARIOUS	2005-051LS	VARIOUS	5	N 1

CONTRACT 60A29
D-91-028-06

STATE OF ILLINOIS
DEPARTMENT OF TRANSPORTATION
DIVISION OF HIGHWAYS
DISTRICT ONE

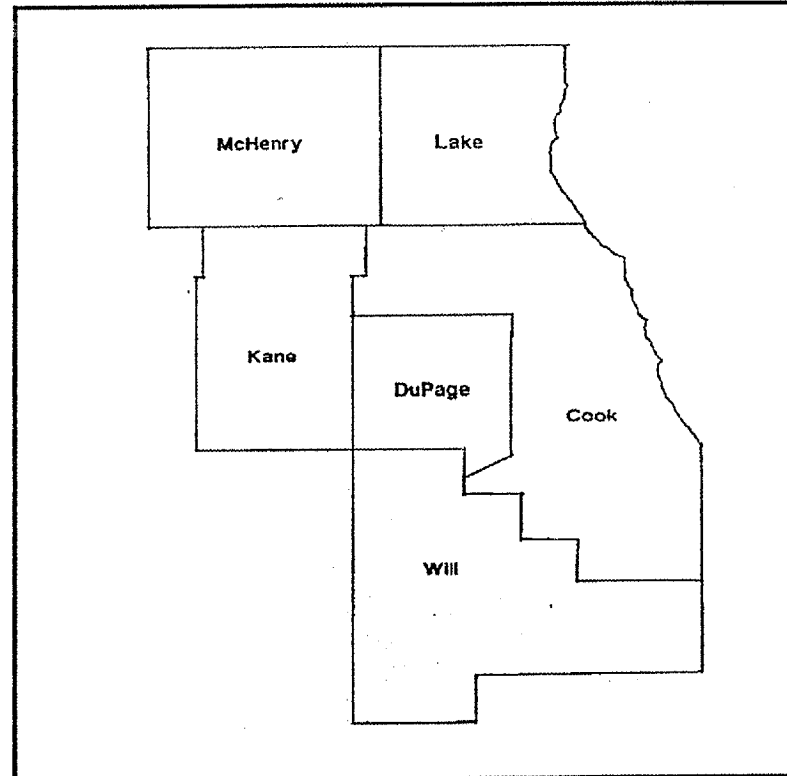
PROPOSED HIGHWAY PLANS

ROUTE: VARIOUS
SECTION 2005-051LS
EXPY LANDSCAPE RENOVATION AND PLANTING
VARIOUS COUNTIES
C-91-028-06



FOR INDEX OF SHEETS SEE PAGE 2

IMPROVEMENT IS IN VARIOUS
LOCATIONS WITHIN DISTRICT
ONE



STATE OF ILLINOIS
DEPARTMENT OF TRANSPORTATION
DIVISION OF HIGHWAYS

SUBMITTED: 12/21 2005
Diane M. O'Keefe
DISTRICT ENGINEER

February 3, 2006
Mike Line
ENGINEER OF DESIGN AND ENVIRONMENT

February 3, 2006
Milton R. Sees P.E.
DIRECTOR, DIVISION OF HIGHWAYS

PRINTED BY THE AUTHORITY
OF THE STATE OF ILLINOIS

J.U.L.I.E.: JOINT UTILITY LOCATION
INFORMATION FOR EXCAVATION
(800) 892-0123

CONTRACT 60A29

ROUTE	SECTION	COUNTY	TOTAL SHEETS	SHEET NUMBER
VARIOUS	2005-051LS	VARIOUS	3	2

CONTRACT 60A29

INDEX OF SHEETS

- 1) TITLE SHEET
- 2) INDEX OF SHEETS
GENERAL NOTES
STATE STANDARDS
- 2A – 2B) SUMMARY OF QUANTITIES
- 3) TC-17 TRAFFIC CONTROL DETAILS FOR FREEWAY SHOULDER
CLOSURES PARTIAL RAMP CLOSURES

STATE STANDARDS

701101-01 701106 -01
702001 - 05

GENERAL NOTES

GENERAL LOCATION AREAS TO BE SPRAYED WILL BE ISSUED AT THE PRE-CONSTRUCTION MEETING.

LANDSCAPE LAYOUT PLANS WILL BE PROVIDED AT THE PRE-CONSTRUCTION MEETING.

THE CONTRACTOR SHALL CONTACT THE BUREAU OF TRAFFIC FOR EXPRESSWAY CLEARANCE NO LATER THAN 11:00 A.M. THE DAY BEFORE WORK BEGINS.

ILLINOIS DEPARTMENT OF TRANSPORTATION

INDEX OF SHEETS
GENERAL NOTES
STATE STANDARDS

SUMMARY OF QUANTITIES

ROUTE	SECTION	COUNTY	TOTAL SHEETS	SHEET NUMBER
VARIOUS	2005-051 LS	VARIOUS	3	2A

CONTRACT 60A29

PAY ITEM	DESCRIPTION	UNIT	URBAN Y003 TOTAL	CONTRACT MAINT FUND	FORMAL CONTRACT FUND
X0325222	WEED CONTROL, BASAL TREATMENT	GAL	150	150	0
X2010300	TREE REMOVAL (UNDER 6 UNITS)	UNIT	100	100	0
20100110	TREE REMOVAL (6 TO 15 UNITS DIAMETER)	UNIT	150	150	0
20100210	TREE REMOVAL (OVER 15 UNITS DIAMETER)	UNIT	150	150	0
20101300	TREE PRUNING (1 TO 10 INCH DIAMETER)	EACH	100	100	0
20101350	TREE PRUNING (OVER 10 INCH DIAMETER)	EACH	100	100	0
21101810	COMPOST FURNISH AND PLACE, 3"	SQ YD	765	0	765
25000400	NITROGEN FERTILIZER NUTRIENT	POUND	112.5	0	112.5
25000500	PHOSPHORUS FERTILIZER NUTRIENT	POUND	112.5	0	112.5
25000600	POTASSIUM FERTILIZER NUTRIENT	POUND	112.5	0	112.5
25003310	INTERSEEDING, CLASS 4	ACRE	4	0	4
25200200	SUPPLEMENTAL WATERING	UNIT	8	0	8
25100630	EROSION CONTROL BLANKET	SQ YD	12,100	0	12,100
67100100	MOBILIZATION	L SUM	1	1	0
C2006136	SHRUB, RHUS TYPHINA LACINIATA (CUTLEAF STAGHORN SUMAC), 3' HEIGHT, BALLED AND BURLAPPED	EACH	117	0	117
C2007224	SHRUB, ROSA KNOCKOUT (KNOCKOUT ROSE), 24" CONTAINER	EACH	160	0	160
C2008224	SHRUB, ROSA NEARLY WILD (NEARLY WILD SHRUB ROSE), 24" HEIGHT, CONTAINER	EACH	100	0	100
D2C00624	EVERGREEN, JUNIPERUS CHINENSIS SEA GREEN (SEA GREEN JUNIPER), 2' WIDTH, CONTAINER	EACH	86	0	86
K0030450	PERENNIAL PLANTS, DAFFODIL BULBS	UNIT	10	0	10
K1003680	MULCH	SQ YD	4125	4000	125
K1006756	WILDFLOWER SEEDING (SPECIAL)	ACRE	2.5	0	2.5
MZ064800	SELECTIVE CLEARING	UNIT	50	50	0
X0301407	PERENNIAL PLANTS, GALLON POT	UNIT	17.6	0	17.6
X0322856	WEED CONTROL, NON-SELECTIVE AND NON-RESIDUAL	GALLON	1	1	0
X0322859	WEED CONTROL, PRE-EMERGENT GRANULAR HERBICIDE	POUND	120	100	20
X0324097	COARSE SAND PLACEMENT	SQ YD	365	0	365

ILLINOIS DEPARTMENT OF TRANSPORTATION
SUMMARY OF QUANTITIES

ROUTE	SECTION	COUNTY	TOTAL SHEETS	SHEET NUMBER
VARIOUS	2005-051 LS	VARIOUS	3	2B

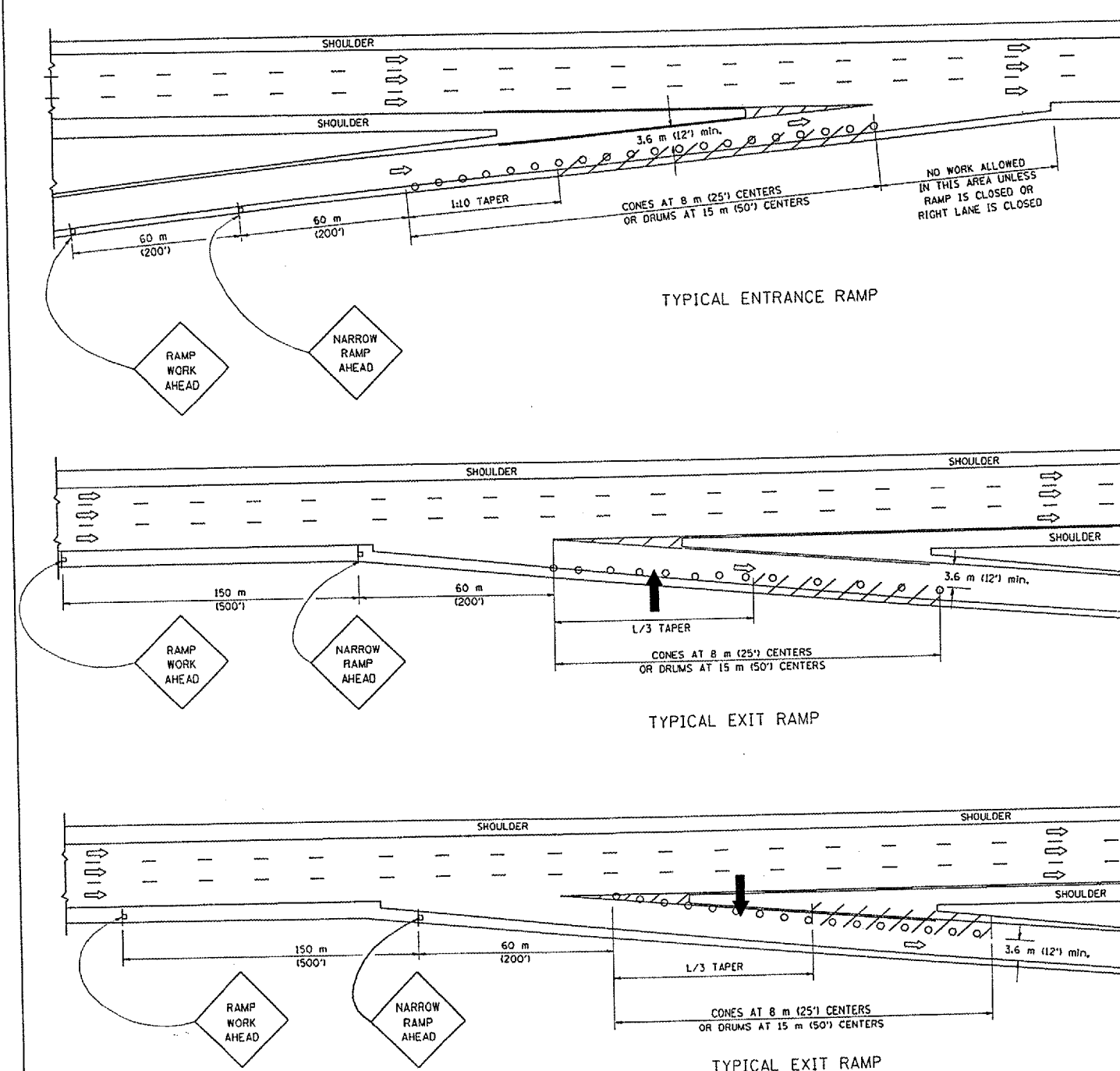
CONTRACT 60A29

PLANT MATERIAL	QUANTITY	N/O RUSSELL RD. AT I-94	S/O RUSSELL RD. AT I-94	NB I-55 AT US 52	SB I-55 AT US 52	I-80 AT I-57
Shrub, Rhus typhina 'Laciniata,' 3' height, BB	EACH	50	50		40	67
Shrub, Rosa Knockout, 24" height, container	EACH	50	50			60
Shrub, Rosa Nearly Wild, 24" ht., container	EACH			50	50	
Evergreen, Juniperus chinensis Sea Green, 2' width, contain.	EACH			43	43	
Perennial Plants, Gallon Pot	UNIT	2.10	2.10	1.90	1.90	9.60
Ornamental Grass, Panicum virgatum 'Shenandoah,' 1 gal.	UNIT	0.40	0.40			1.15
Ornamental Grass, Panicum virgatum 'Northwind,' 1 gal.	UNIT			0.60	0.60	1.50
Perennial, Baptisia australis, 1 gal.	UNIT	0.40	0.40			1.70
Perennial, Echinacea purpurea 'Magnus,' 1 gal.	UNIT	0.65	0.65	0.65	0.65	1.75
Perennial, Hemerocallis Stella D'Oro, 1 gal.	UNIT			0.65	0.65	2.30
Perennial, Physostegia virginiana 'Pink Bouquet,' 1 gal.	UNIT					0.60
Perennial, Rudbeckia fulgida 'Goldsturm,' 1 gal.	UNIT	0.65	0.65			0.60
Perennial Plants, Daffodil (Ceylon)	UNIT	2.5	2.5	2.50	2.5	
Compost Furnish and Place, 3"	SQ YD	100	100	100	100	365
Mulch Placement, 4"	SQ YD	25		50	50	
Wildflower Seeding (Special)	ACRE	0.5	0.5	0.5	0.5	0.5
Interseeding, Class 4	ACRE	1	1	1	1	
Weed Control, Pre-Emergent Granular Herbicide	POUNDS	2.5	2.5	2.5	2.5	10
Nitrogen Fertilizer Nutrient	POUNDS	22.5	22.5	22.5	22.5	22.5
Phosphorus Fertilizer Nutrient	POUNDS	22.5	22.5	22.5	22.5	22.5
Potassium Fertilizer Nutrient	POUNDS	22.5	22.5	22.5	22.5	22.5
Erosion Control Blanket	SQ YD	2420	2420	2420	2420	2420
Coarse Sand Placement, 2"	SQ YD					365

ILLINOIS DEPARTMENT OF TRANSPORTATION

SUMMARY OF QUANTITIES

PARTIAL RAMP CLOSURE DETAILS



SYMBOLS

- ARROWBOARD
- WORK AREA
- SIGN ON PORTABLE OR PERMANENT SUPPORT
- FLAGGER WITH CONTROL SIGN
- DRUM WITH MONO-DIRECTIONAL STEADY BURNING LIGHT
- CONES - 700 (28) IN HEIGHT

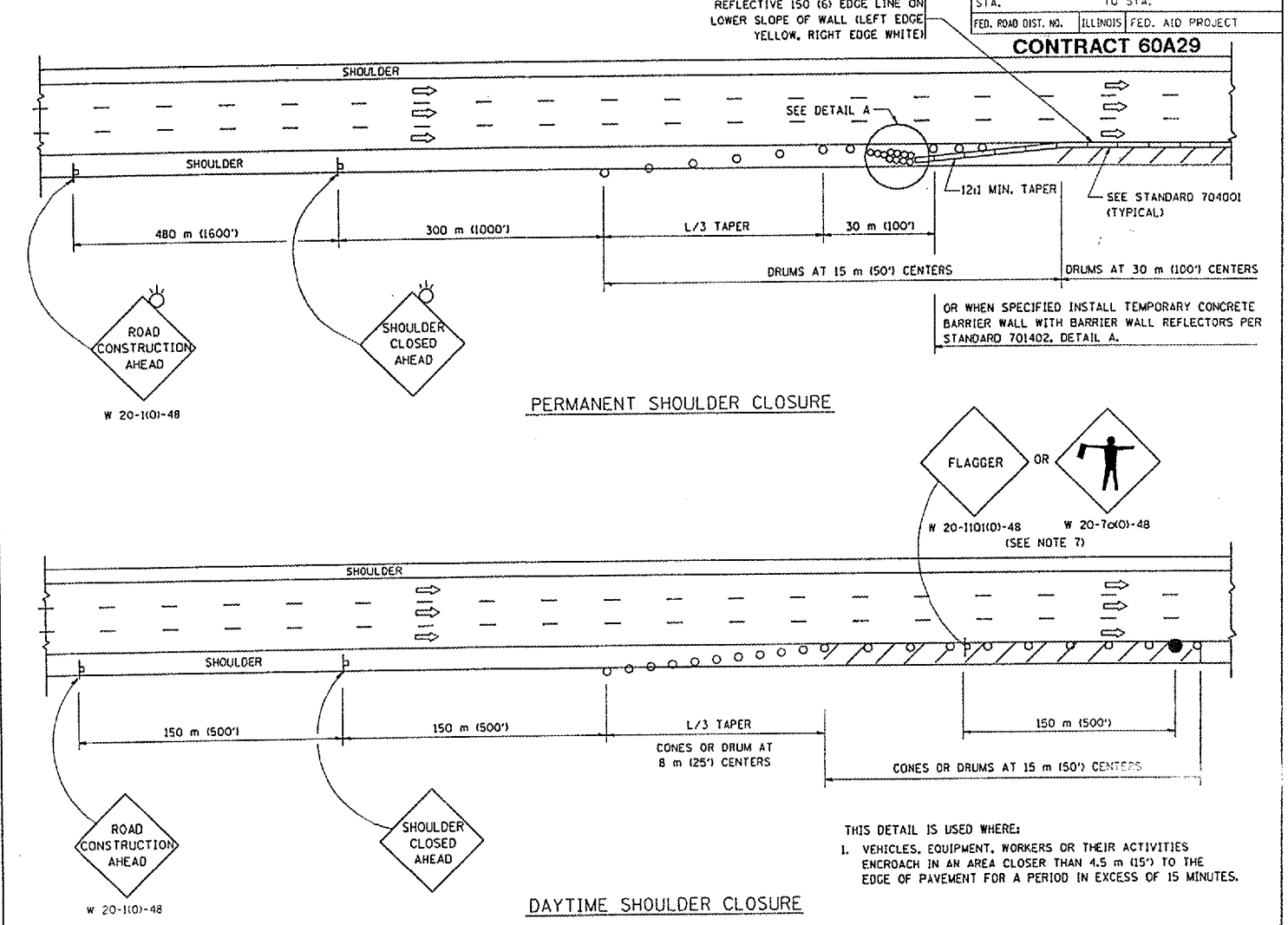
GENERAL NOTES

1. THE "L" DISTANCE EQUALS:

SPEED LIMIT	FORMULAS
80 km/h (45 mph) OR GREATER:	METRIC ENGLISH
	$L=0.65(W)(S)$ $L=(W)(S)$

W = WIDTH OF OFFSET IN METERS (FEET)
S = NORMAL POSTED SPEED KM/H (MPH)
2. PLASTIC DRUMS WITH HIGH PERFORMANCE REFLECTIVE SHEETING AND STEADY BURNING LIGHTS ARE REQUIRED FOR ALL NIGHTTIME CLOSURES.
3. ALL SIGNS SHALL BE POST MOUNTED IF THE CLOSURE TIME EXCEEDS FOUR DAYS.
4. FLASHING LIGHTS SHALL BE USED DURING THE HOURS OF DARKNESS AND SHALL BE INSTALLED ABOVE THE FIRST TWO SETS OF SIGNS.

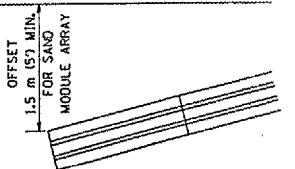
SHOULDER CLOSURE DETAILS



F.A. RTE.	SECTION	COUNTY	TOTAL SHEETS	SHEET NO.
	2005-051LS VARIOUS		3	3
STA.	TO STA.			
FED. ROAD DIST. NO.	ILLINOIS	FED. AID PROJECT		

CONTRACT 60A29

ARRAY DESIGN PER MANUFACTURER TO BE NCHRP 350 COMPLIANT FOR POSTED SPEED.



DETAIL "A"
IMPACT ATTENUATOR, TEMPORARY
(SEE NOTE 5)

ALL DIMENSIONS ARE IN MILLIMETERS (INCHES) UNLESS OTHERWISE SHOWN.
ILLINOIS DEPARTMENT OF TRANSPORTATION

REVISIONS	
NAME	DATE
DWS	11/96
JAF	12/02
NCHRP 350	04/03

TRAFFIC CONTROL DETAILS FOR FREEWAY SHOULDER CLOSURES PARTIAL RAMP CLOSURES

SCALE: NONE
DATE: 05/06/2003

DRAWN BY: DWS
DESIGNED BY: DWS
CHECKED BY:
TC-17

5. THE IMPACT ATTENUATOR, TEMPORARY IS NOT REQUIRED WHEN THE TEMPORARY CONCRETE BARRIER WALL IS OUTSIDE THE CLEAR ZONE OR IS TIED INTO THE EXISTING GUARDRAIL. IF OFFSET IS LESS THAN 5 FEET USE "TRAFFIC BARRIER TERMINAL, TYPE III, TEMPORARY" DEVICE TO MEET NCHRP350 FOR POSTED SPEED.
6. AUTHORIZATION FROM THE DISTRICT'S BUREAU OF TRAFFIC IS REQUIRED FOR ALL FREEWAY CLOSURES.
7. THE FLAGGER AND FLAGGER SIGN ARE REQUIRED AT THE ABOVE WORK SITES WHEN:
 - a. FOUR OR MORE WORK VEHICLES ENTER THE TRAFFIC LANES IN A ONE HOUR PERIOD.
 - b. THE WORK ACTIVITY REQUIRES FREQUENT ENCROACHMENT INTO THE LANE OPEN TO TRAFFIC.
 THE FLAGGER SHALL BE STATIONED APPROXIMATELY 30 m (100') TO 60 m (200') IN ADVANCE OF THE WORKERS.

THIS DETAIL IS USED WHERE:
1. VEHICLES, EQUIPMENT, WORKERS OR THEIR ACTIVITIES ENCROACH IN AN AREA CLOSER THAN 4.5 m (15') TO THE EDGE OF PAVEMENT FOR A PERIOD IN EXCESS OF 15 MINUTES.