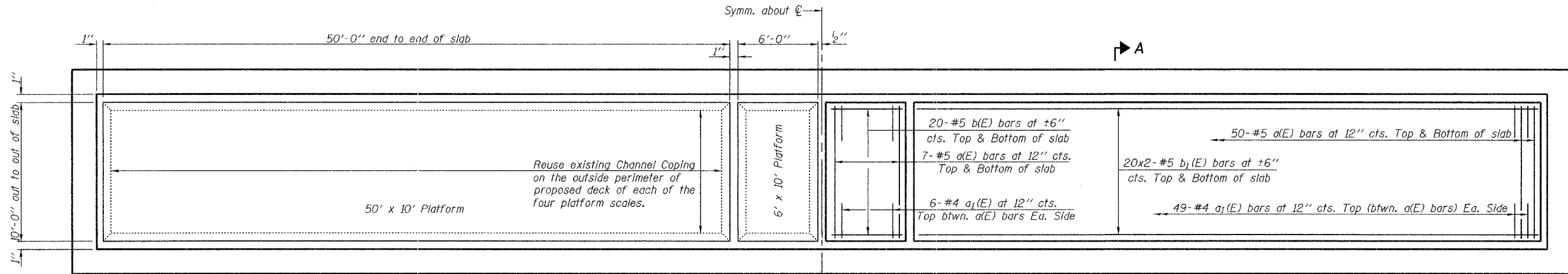


STATE OF ILLINOIS
DEPARTMENT OF TRANSPORTATION

ROUTE NO.	SECTION	COUNTY	TOTAL SHEETS	SHEET NO.	SHEET NO. 5 7 SHEETS
F.A.I. 80	2005- 0561	Will	10	20	
FED. ROAD DIST. NO. 7	ILLINOIS	FED. AID PROJECT-			

Contract #60A44



SHOWING CHANNEL COPING

PLAN
CONCRETE DECK
(Pit entrance not shown)

SHOWING REINFORCEMENT

MIN. BAR LAP

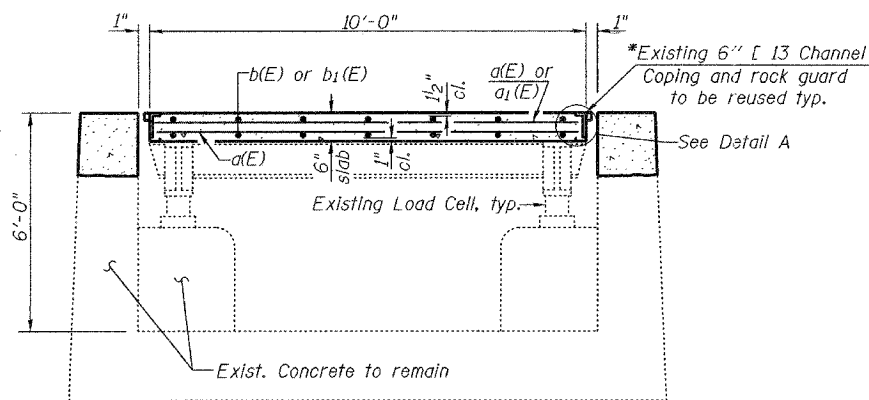
#5 Bar = 1'-8"

**BILL OF MATERIAL
FOR BOTH W.B. & E.B.**

Bar	No.	Size	Length	Shape
a(E)	456	#5	9'-9"	—
a ₁ (E)	440	#4	2'-9"	—
b(E)	160	#5	5'-6"	—
b ₁ (E)	320	#5	25'-9"	—
		Reinforcement Bars, Epoxy Coated	Pound	14960
		Conc. Superstructure	Cu. Yd.	41.5

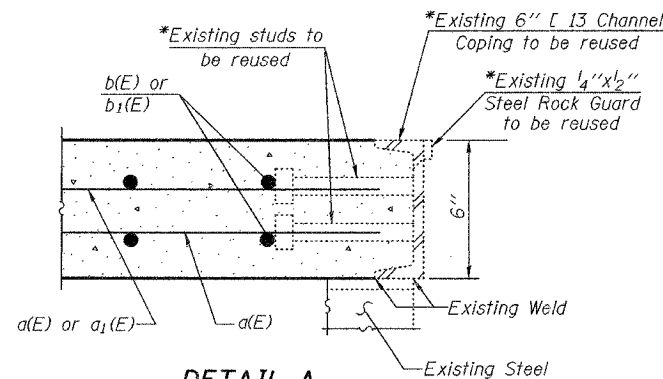
Reinforcement bars designated (E) shall be epoxy coated.
Bars indicated thus 20x2-#5 etc. indicates 20 lines of bars with 2 lengths per line.

**CONCRETE DECK DETAILS
FRANKFORT WEIGH STATIONS
F.A.I. ROUTE 80 SECTION 2005-0561
WILL COUNTY
STA. 1212+05.06 (W.B.) &
STA. 989+44.94 (E.B.)**



SECTION A-A

*See Note A



DETAIL A

*See Note A

Note A:

*The Contractor has the option to remove the existing channel coping (with existing studs and rock guards) which is welded to the existing steel and replace it with new channel coping (with new studs and rock guards). If the Contractor chooses to do this, the Bureau of Bridges and Structures shall be contacted for weld information, the Contractor shall take care not to damage the existing steel which is to be reused, and there shall be no extra cost to the department.

DESIGNED	Stephen M. Ryan
CHECKED	Phillip R. Litchfield
DRAWN	R. Sommer
CHECKED	SMR/PRL/SEM

EXAMINED	January 20, 2006	Thomas J. Domagala
PASSED		Ralph E. Anderson