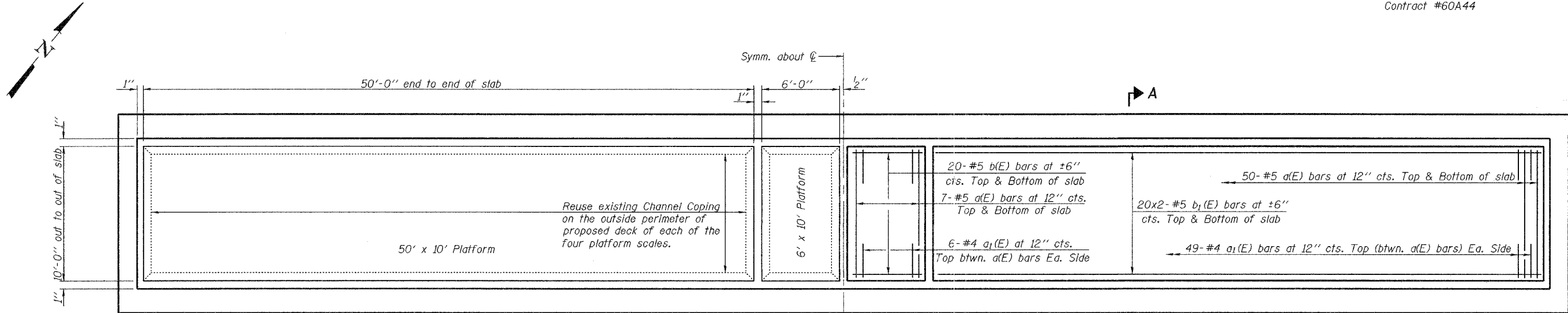


STATE OF ILLINOIS
DEPARTMENT OF TRANSPORTATION

ROUTE NO.	SECTION	COUNTY	SHEET	SHEET NO.
F.A.I. 57	2005- 0561	Will	17 20	5
FED. ROAD DIST. NO. 7	ILLINOIS	FED. AID PROJECT		

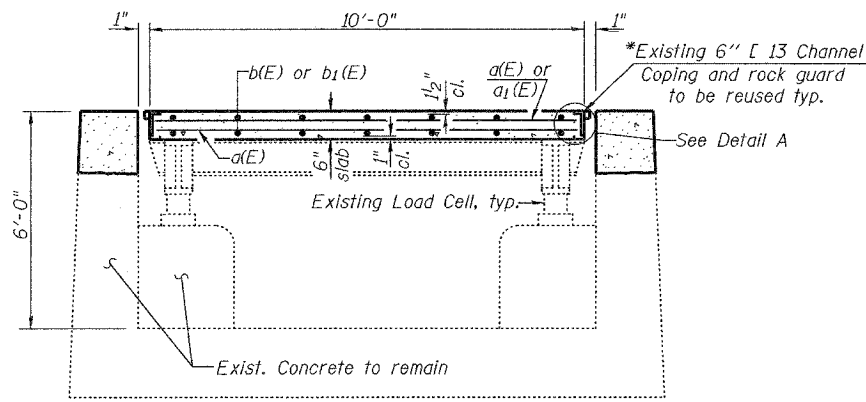
Contract #60A44



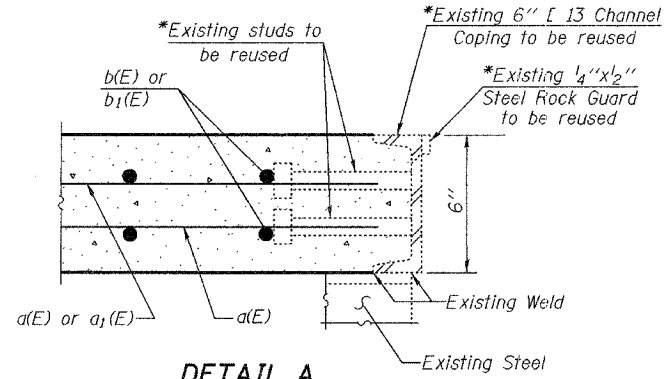
PLAN
CONCRETE DECK
(Pit entrance not shown)

SHOWING CHANNEL COPING SHOWING REINFORCEMENT

MIN. BAR LAP
#5 Bar = 1'-8"



SECTION A-A
*See Note A



DETAIL A
*See Note A

Note A:
*The Contractor has the option to remove the existing channel coping (with existing studs and rock guards) which is welded to the existing steel and replace it with new channel coping (with new studs and rock guards). If the Contractor chooses to do this, the Bureau of Bridges and Structures shall be contacted for weld information, the Contractor shall take care not to damage the existing steel which is to be reused, and there shall be no extra cost to the department.

BILL OF MATERIAL
FOR BOTH N.B. & S.B.

Bar	No.	Size	Length	Shape
a(E)	456	#5	9'-9"	—
a1(E)	440	#4	2'-9"	—
b(E)	160	#5	5'-6"	—
b1(E)	320	#5	25'-9"	—
Reinforcement Bars, Epoxy Coated			Pound	14960
Conc. Superstructure			Cu. Yd.	41.5

Reinforcement bars designated (E) shall be epoxy coated.
Bars indicated thus 20x2-#5 etc. indicates 20 lines of bars with 2 lengths per line.

CONCRETE DECK DETAILS
PEOTONE WEIGH STATIONS
F.A.I. ROUTE 57 SECTION 2005-0561
WILL COUNTY
STA. 1091+65.06 (S.B.) &
STA. 1073+09.94 (N.B.)

DESIGNED Stephen M. Ryan	January 20, 2006
CHECKED Phillip R. Litchfield	EXAMINED Thomas J. Domagala
DRAWN R. Sommer	PASSED Ralph E. Anderson
CHECKED SMR/PRL/SEM	ENGINEER OF BRIDGES AND STRUCTURES